

WAAS CH 86428 W21A	APP CRS 211°	Rwy Idg 5003 TDZE 470 Apt Elev 473
----------------------------------------	------------------------	---------------------------------------------------------------

RNAV (GPS) RWY 21

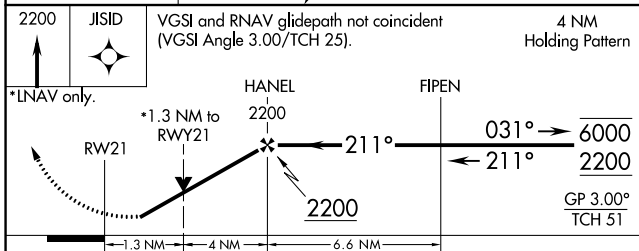
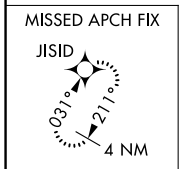
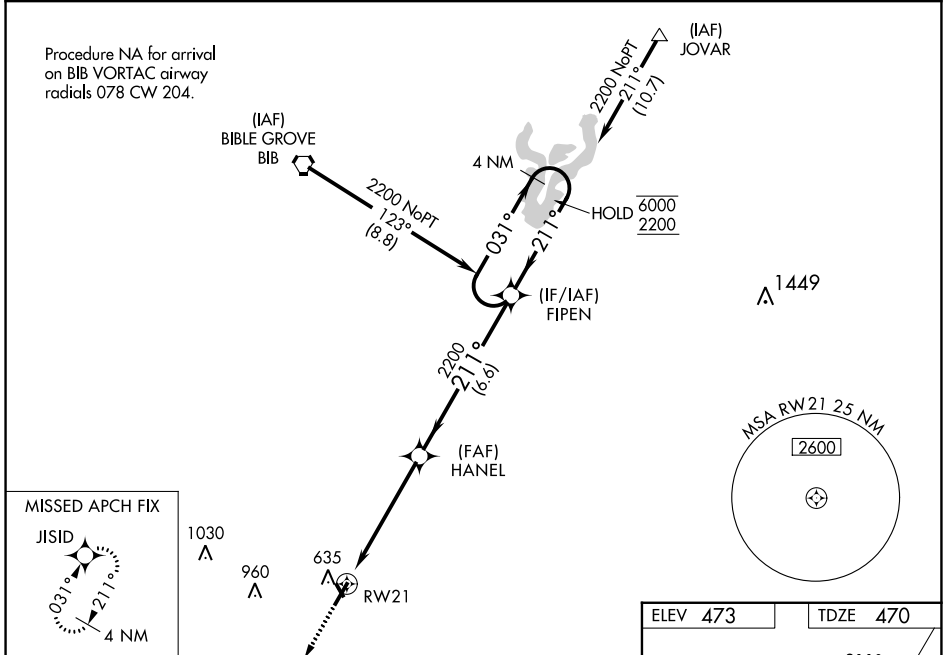
FLORA MUNI (F.O.A.)

RNP APCH.

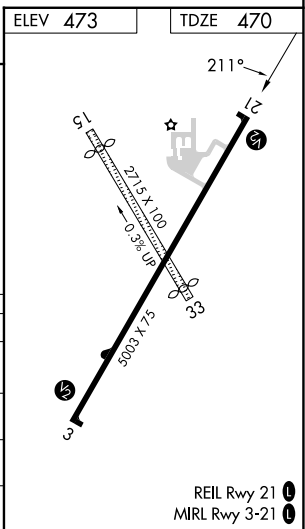
⚠ Circling NA to Rwy's 15 and 33. Baro-VNAV and VDP NA when using Olney-Noble altimeter setting.
⚠ For uncompensated Baro-VNAV systems, LNAV/VNAV NA below -17°C or above 54°C. Rwy 21 helicopter visibility reduction below 3/4 SM NA. When local altimeter setting not received, use Olney-Noble altimeter setting and increase LPV DA to 779 feet, LNAV/VNAV DA to 838 feet and increase LNAV/VNAV visibility all Cats 1/8 SM, increase all MDA 40 feet.

MISSED APPROACH:
Climb to 2200 direct JISID and hold.

AWOS-3 120.175	KANSAS CITY CENTER 127.7 351.825	UNICOM 122.7 (CTAF) 0
--------------------------	--------------------------------------------	---------------------------------



CATEGORY	A	B	C	D
LPV DA		746-1	276 (300-1)	NA
LNAV/VNAV DA		805-1	335 (400-1)	NA
LNAV MDA	920-1	450 (500-1)	920-1 3/8 450 (500-1 3/8)	NA
CIRCLING	940-1	467 (500-1)	1160-2 687 (700-2)	NA



REIL Rwy 21 0
MIRL Rwy 3-21 0

EC-3, 22 FEB 2024 to 21 MAR 2024

EC-3, 22 FEB 2024 to 21 MAR 2024