

# RNAV (GPS) RWY 36

APCH CRS	Rwy Idg	5184
015°	TDZE	740
	Arprt Elev	754

AL-151 [USA]

GODMAN AAF (KF TK)

RNP APCH - GPS

ODALS

▼ \* Straight-in Rwy 36 at night, operational VGSI required, remain on or above VGSI glidepath until threshold. When ALS inop, increase CAT CD vis to 1½ miles. Helicopter visibility reduction below 1 mile NA.

MISSED APPROACH: Climbing left turn to 2500 direct HONAL and hold.

ATIS  
**109.6**

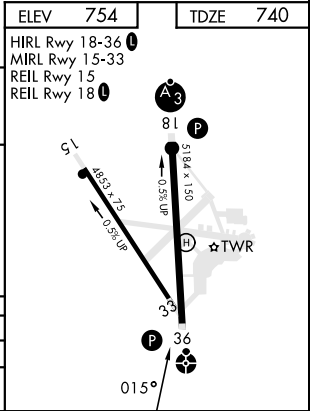
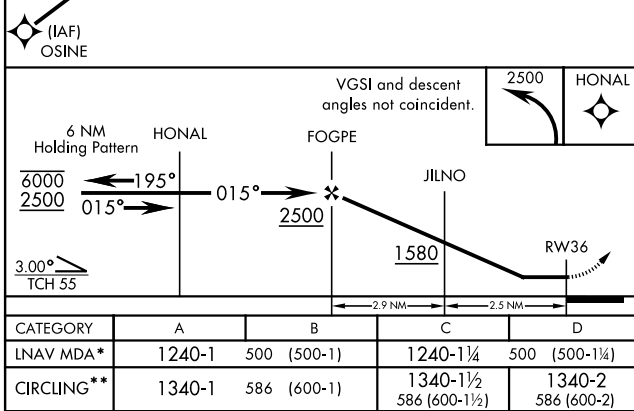
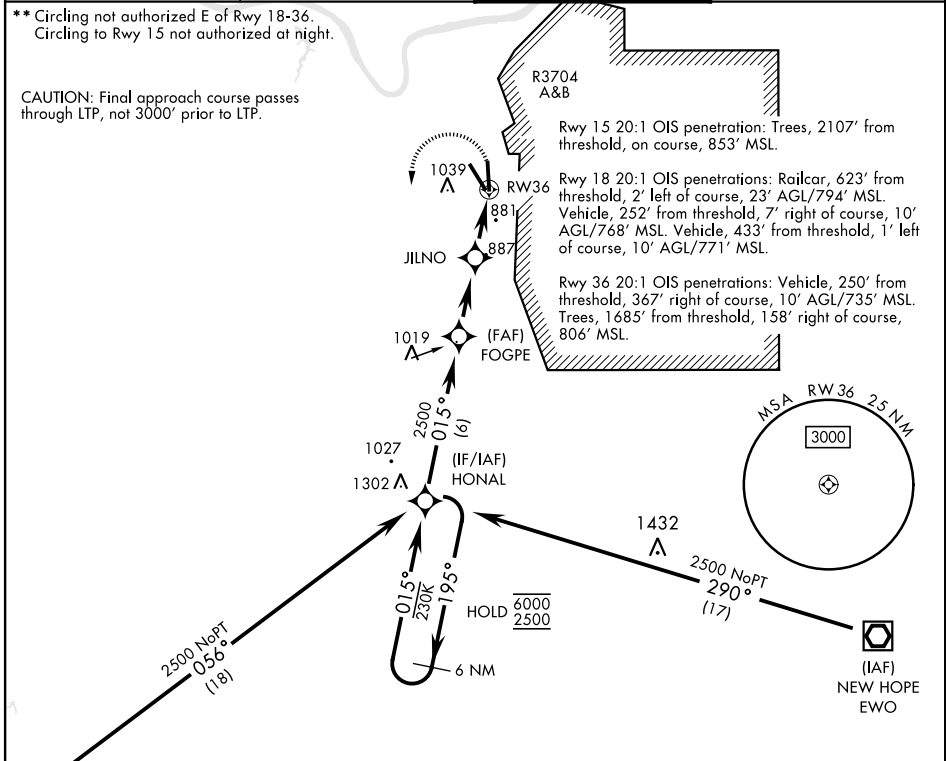
LOUISVILLE APP CON  
**132.075 327.0**

TOWER ★  
**133.35 (CTAF) 0**

GND CON  
**121.9 239.3**

\*\* Circling not authorized E of Rwy 18-36.  
Circling to Rwy 15 not authorized at night.

CAUTION: Final approach course passes through LTP, not 3000' prior to LTP.



# RNAV (GPS) RWY 36

SE-1, 22 FEB 2024 to 21 MAR 2024

SE-1, 22 FEB 2024 to 21 MAR 2024