

WAAS CH <b>93609</b> <b>W05A</b>	APP CRS <b>050°</b>	Rwy Idg <b>11981</b> TDZE <b>815</b> Apt Elev <b>815</b>
--	------------------------	--

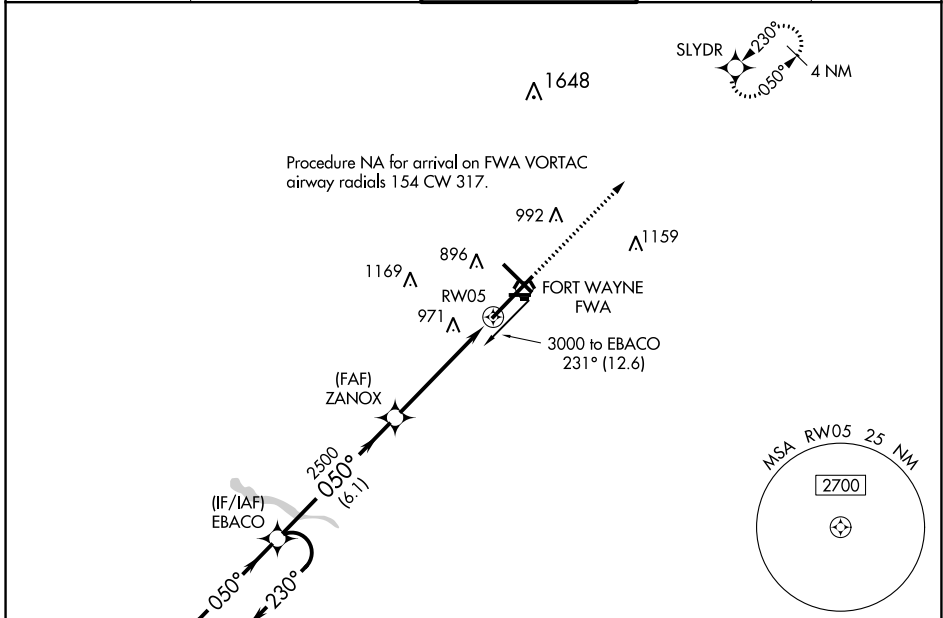
# RNAV (GPS) RWY 5

FORT WAYNE INTL (FWA)

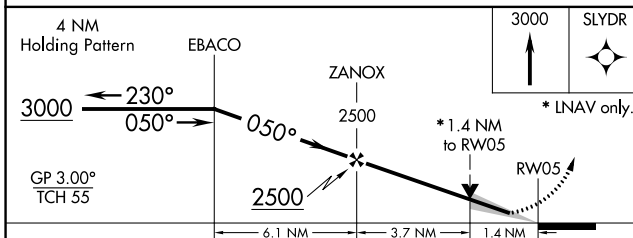
**⚠** For uncompensated Baro-VNAV systems, procedure NA below -16°C (4°F) or above 47°C (116°F). DME/DME RNP-0.3 NA. For inop ALS, increase LPV Cat E visibility to RVR 4000, LNAV/VNAV all Cats visibility to 1½ SM and LNAV Cat C/D/E visibility to 1¾ SM.

ALSF-2 MISSED APPROACH: Climb to 3000 direct SLYDR and hold.

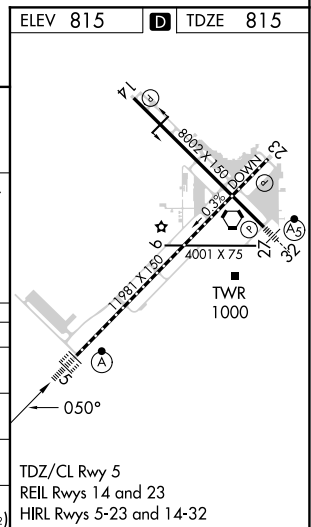
ATIS <b>121.25 360.825</b>	FORT WAYNE APP CON <b>127.2 284.6</b>	FORT WAYNE TOWER <b>119.1 269.325</b>	GND CON <b>121.9 348.6</b>	CLNC DEL <b>124.75</b>
-------------------------------	--	--	-------------------------------	---------------------------



ELEV 815	<b>D</b> TDZE 815
----------	-------------------



CATEGORY	A	B	C	D	E
LPV DA	1065/18 250 (300-½)				
LNAV/VNAV DA	1275/60 460 (500-1¼)				
LNAV MDA	1300/24	485 (500-½)	1300/50		485 (500-1)
<b>C</b> CIRCLING	1300-1	485 (500-1)	1420-1¾ 605 (700-1¾)	1520-2¼ 705 (800-2¼)	1520-2½ 705 (800-2½)



EC-2, 22 FEB 2024 to 21 MAR 2024

EC-2, 22 FEB 2024 to 21 MAR 2024