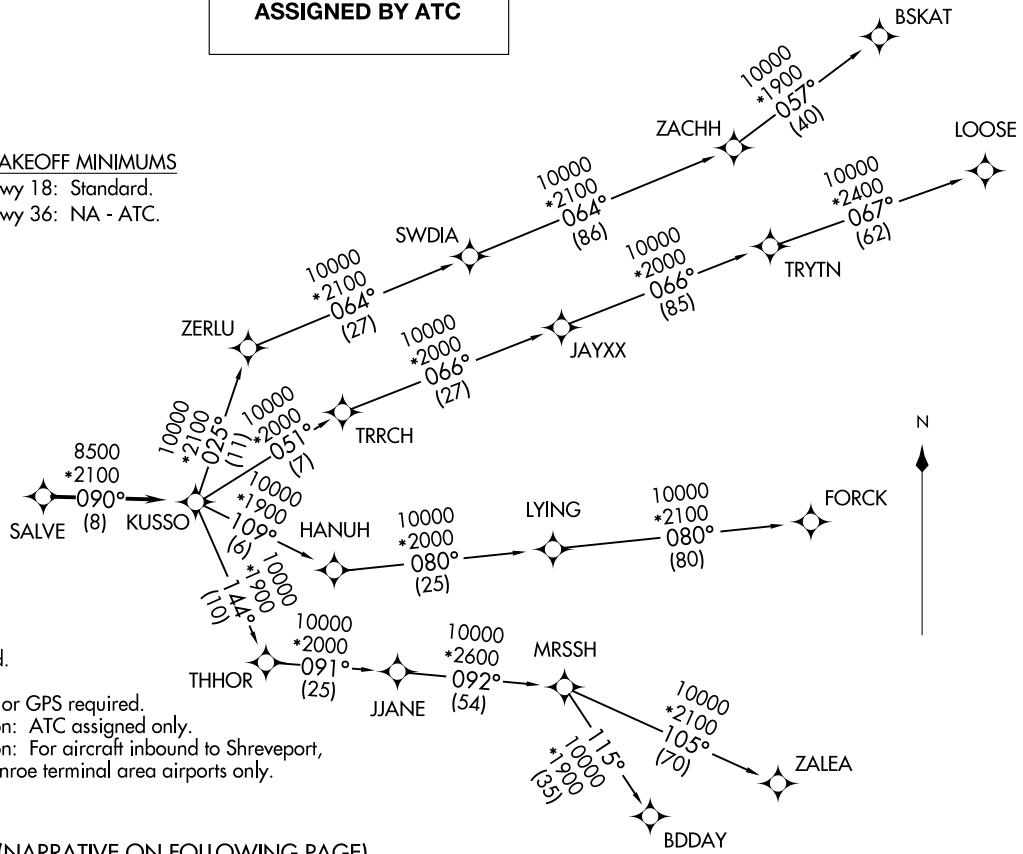
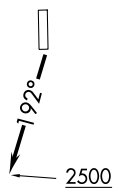


**TOP ALTITUDE:
ASSIGNED BY ATC**

GND CON
121.15
GRAND PRAIRIE TOWER ★
128.55 (CTAF)
REGIONAL DEP CON
135.975 379.9

TAKEOFF MINIMUMS
Rwy 18: Standard.
Rwy 36: NA - ATC.



- NOTE: RADAR required.
- NOTE: RNAV 1.
- NOTE: DME/DME/IRU or GPS required.
- NOTE: BDDAY Transition: ATC assigned only.
- NOTE: MRSSH Transition: For aircraft inbound to Shreveport, Jackson and Monroe terminal area airports only.

(NARRATIVE ON FOLLOWING PAGE)

NOTE: Chart not to scale.

KUSSO ONE DEPARTURE (RNAV)
(KUSSO1 .KUSSO) 24MAR22

GRAND PRAIRIE, TEXAS
GRAND PRAIRIE MUNI (GPM)
(KUSSO1 .KUSSO) 24MAR22

KUSSO ONE DEPARTURE (RNAV)
(KUSSO1 .KUSSO) 23110

GRAND PRAIRIE MUNI (GPM)
GRAND PRAIRIE, TEXAS
AL-9209 (FAA)

KUSSO ONE DEPARTURE (RNAV)



DEPARTURE ROUTE DESCRIPTION

TAKEOFF RUNWAY 18: Climb on heading 192° to 2500 before proceeding on course.

When entering controlled airspace, fly heading assigned by ATC, expect vector to SALVE, then on track 090° to KUSSO, then on assigned transition. Maintain ATC assigned altitude, expect filed altitude 10 minutes after departure.

- BDDAY TRANSITION (KUSSO1.BDDAY)
- BSKAT TRANSITION (KUSSO1.BSKAT)
- FORCK TRANSITION (KUSSO1.FORCK)
- LOOSE TRANSITION (KUSSO1.LOOSE)
- MRSSH TRANSITION (KUSSO1.MRSSH)
- ZALEA TRANSITION (KUSSO1.ZALEA)

SC-2, 22 FEB 2024 to 21 MAR 2024

SC-2, 22 FEB 2024 to 21 MAR 2024