

APP CRS	Rwy Idg	4002
181°	TDZE	444
	Apt Elev	444

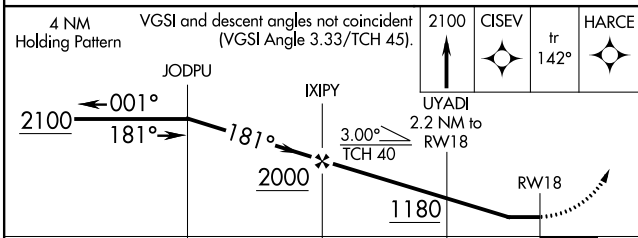
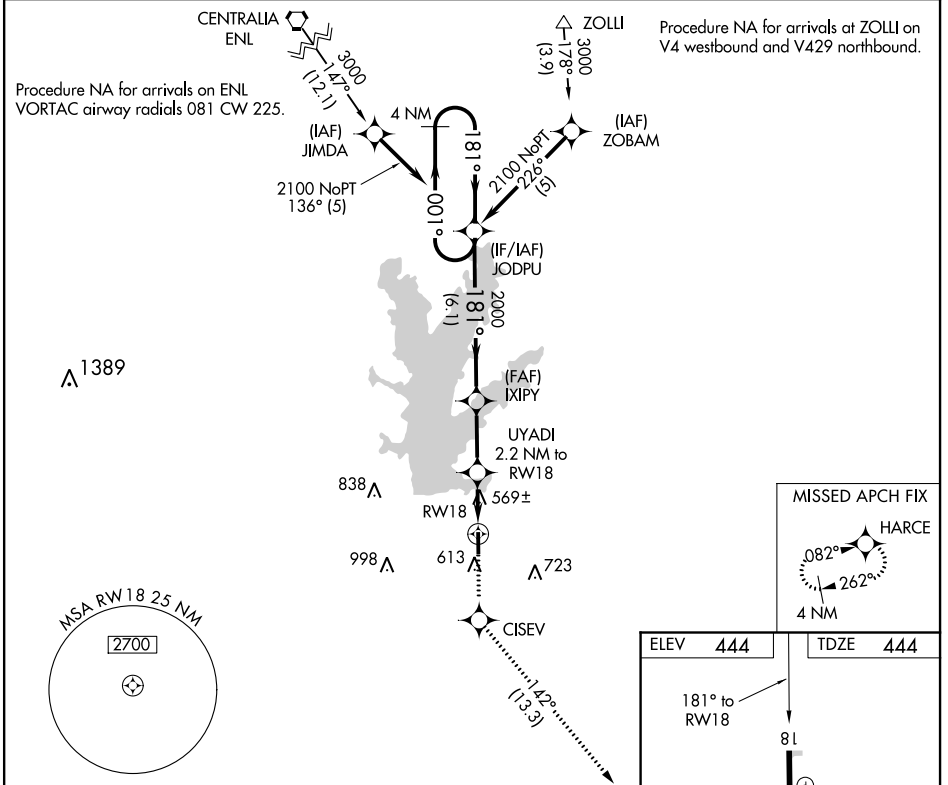
RNAV (GPS) RWY 18

BENTON MUNI (H96)

▼ DME/DME RNP-0.3 NA. Rwy 18 helicopter visibility reduction below 3/4 SM NA.
▲ NA Use Marion altimeter setting; when not received, use Mount Vernon altimeter setting and increase all MDA 20 feet and increase LNAV Cat C visibility to 1 1/4 mile. Circling Rwy 36 NA at night.

MISSED APPROACH: Climb to 2100 direct CISEV and on track 142° to HARCE and hold.

MWA AWOS-3 119.675	KANSAS CITY CENTER 127.475 346.275	UNICOM 122.8 (CTAF) 0
------------------------------	--	---------------------------------



MISSED APCH FIX

HARCE

082°
262°
4 NM

ELEV	444	TDZE	444
------	------------	------	------------

181° to RW18

81

4002 X 75

36

REIL Rwy 18, 36
MIRL Rwy 18-36 0

CATEGORY	A	B	C	D
LNAV MDA	860-1	416 (500-1)	860-1 1/8 416 (500-1 1/8)	NA
CIRCLING	1000-1	556 (600-1)	1120-2 676 (700-2)	NA

EC-3, 11 AUG 2022 to 08 SEP 2022

EC-3, 11 AUG 2022 to 08 SEP 2022