

# COPTER RNAV (GPS) RWY 32

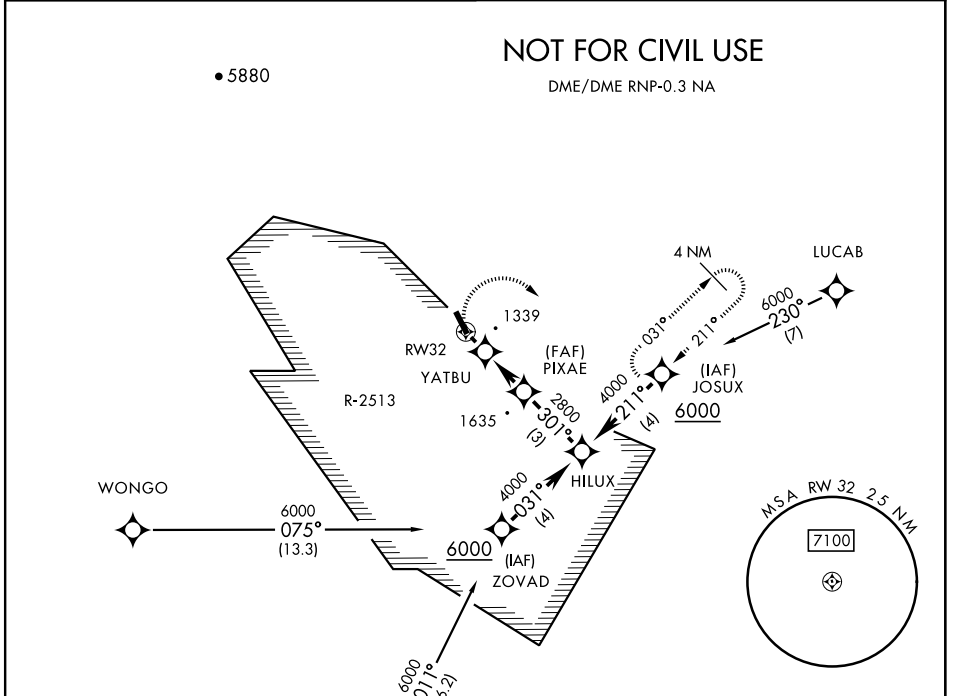
APCH CRS	Rwy Idg	<b>570</b>
<b>301°</b>	TDZE	<b>1017</b>
	Arpt Elev	<b>1017</b>

[USA] AL-3073 (MIL)

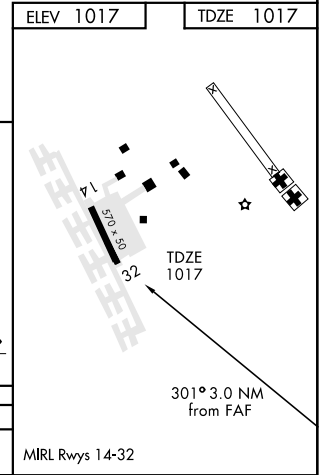
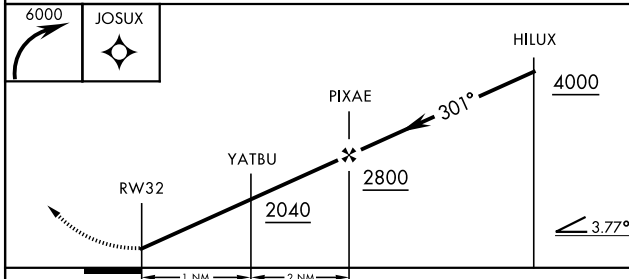
TUSI AHP (KHGT)

<p><b>▼</b> Procedure NA when Fort Hunter-Liggett altimeter setting not available.</p> <p><b>▲</b> NA Limit final and missed approach to 90 KIAS.</p>	<p>MISSED APPROACH: Climbing right turn to 6000 direct JOSUX and hold.</p>
---	--

<p>OAKLAND CENTER</p> <p><b>128.7 307.0</b></p>	<p>RANGE CON/OPS</p> <p><b>41.05 126.2 229.5</b></p>
---	--



ELEV 1017	TDZE 1017
-----------	-----------



CATEGORY	COPTER	
LNNAV MDA	1660-½	643 (700-½)
MIRL Rwy's 14-32		

# COPTER RNAV (GPS) RWY 32

SW-3, 22 FEB 2024 to 21 MAR 2024

SW-3, 22 FEB 2024 to 21 MAR 2024