

VOR/DME HSI <b>108.8</b> Chan <b>25</b>	APP CRS <b>314°</b>	Rwy Idg TDZE <b>1944</b> Apt Elev <b>1961</b>
---	------------------------	---

# VOR RWY 32

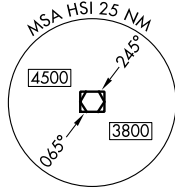
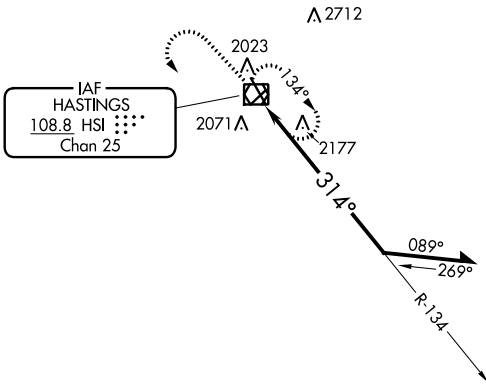
HASTINGS MUNI (HSI)

**⚠** When VGSI inop, procedure NA at night. Visibility reduction by helicopters NA.  
**⚠** When local altimeter setting not received, use Grand Island altimeter setting and increase all MDAs 80 feet and Cat C/D visibility ¼ SM. Circling NA for Cat D east of Rwy 14/32.

MISSED APPROACH: Climb to 3800 then left turn direct HSI VOR/DME and hold.

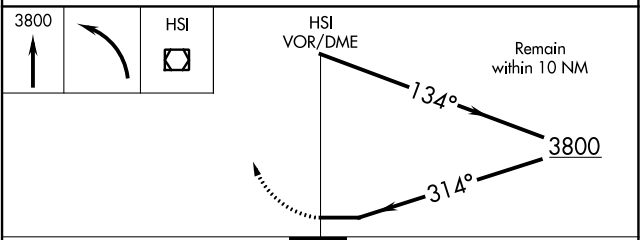
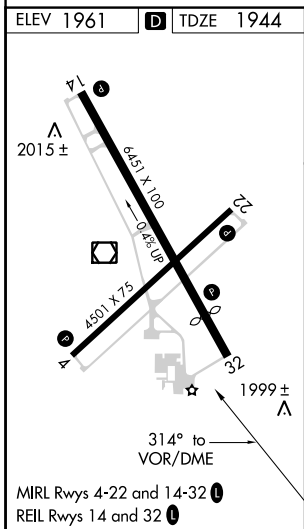
ASOS <b>120.525</b>	MINNEAPOLIS CENTER <b>119.4 278.8</b>	UNICOM <b>122.8 (CTAF) 0</b>
------------------------	--	---------------------------------

3048 **△**



NC-2, 22 FEB 2024 to 21 MAR 2024

NC-2, 22 FEB 2024 to 21 MAR 2024



CATEGORY	A	B	C	D
S-32	2560-1	616 (600-1)	2560-1¾	616 (600-1¾)
CIRCLING	2560-1	599 (600-1)	2560-1¾	2560-2 599 (600-2)