

WAAS CH <b>56540</b> <b>W28A</b>	APP CRS <b>283°</b>	Rwy Idg TDZE <b>4230</b> Apt Elev <b>4230</b>
--	------------------------	---

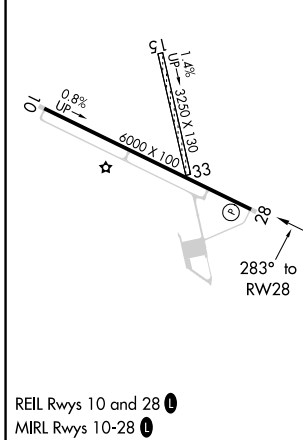
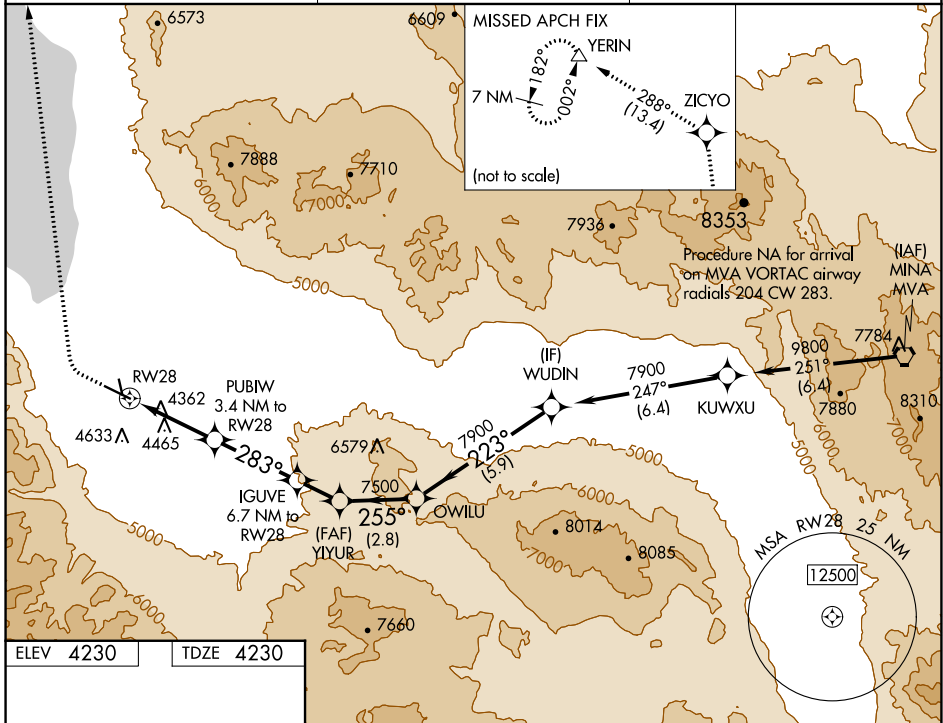
# RNAV (GPS) RWY 28

HAWTHORNE INDUSTRIAL (HTH)

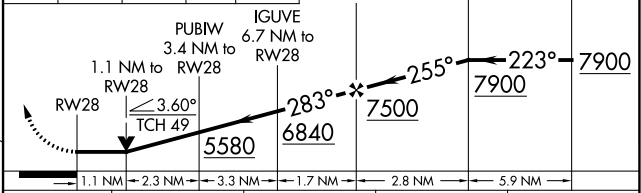
**⚠** Circling NA to Rwys 15 and 33. When local altimeter setting not received, procedure NA. Circling NA south of Rwy 10-28. DME/DME RNP-0.3 NA. Rwy 28 helicopter visibility reduction below ¼ SM NA.

**MISSED APPROACH:** Climb to 4750 then climbing right turn to 10000 direct ZICYO and on track 288° to YERIN and hold.

AWOS-3 <b>120.225</b>	OAKLAND CENTER <b>125.75 284.65</b>	UNICOM <b>122.8 (CTAF) 0</b>
--------------------------	--	---------------------------------



4750	10000	ZICYO	tr 288°	YERIN	VGSI and descent angles not coincident (VGSI Angle 3.00/TCH 49).
------	-------	-------	---------	-------	--



CATEGORY		A	B	C	D
LP	MDA	4620-1	390 (400-1)	4620-1½ 390 (400-1½)	NA
	LNAV MDA	4720-1	490 (500-1)	4720-1¾ 490 (500-1¾)	NA
<b>C</b>	CIRCLING	4720-1	490 (500-1)	5680-3 1450 (1500-3)	NA

SW-4, 22 FEB 2024 to 21 MAR 2024

SW-4, 22 FEB 2024 to 21 MAR 2024