

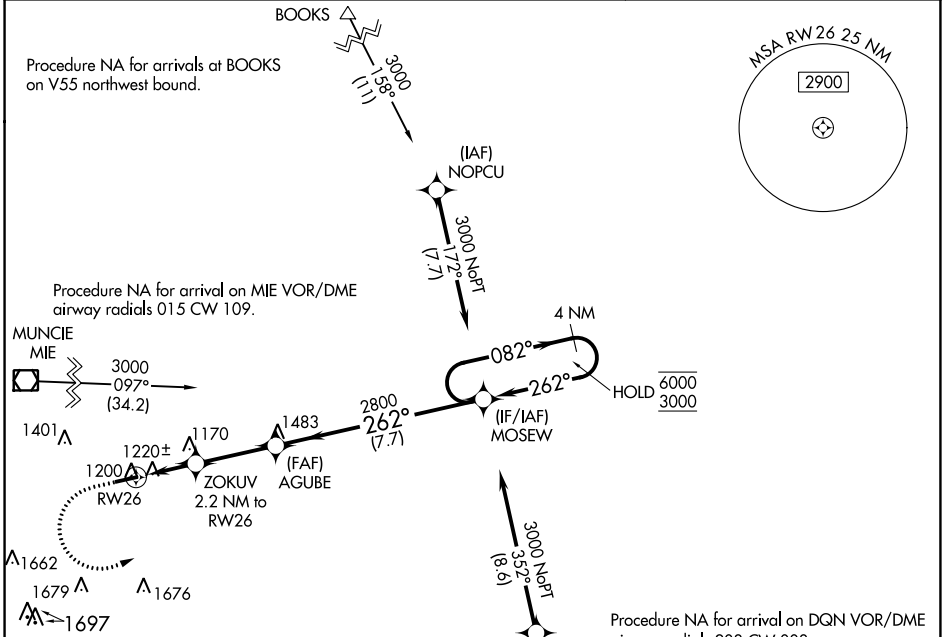
WAAS CH <b>78120</b> <b>W26A</b>	APP CRS <b>262°</b>	Rwy Idg TDZE Apt Elev	<b>4300</b> <b>1123</b> <b>1123</b>
--	------------------------	-----------------------------	---

# RNAV (GPS) RWY 26

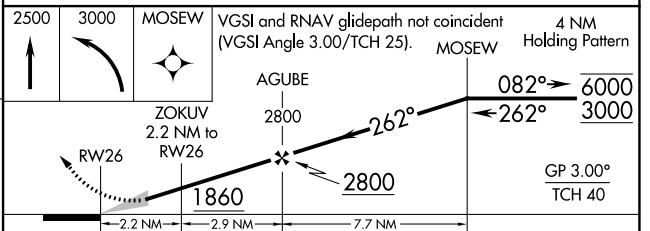
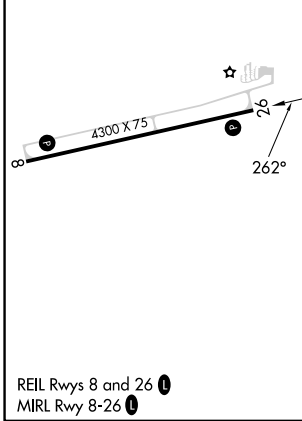
RANDOLPH COUNTY (I22)

RNP APCH - GPS.	MISSED APPROACH: Climb to 2500 then climbing left turn to 3000 direct MOSEW and hold.
<p>Baro-VNAV NA. Use Versailles altimeter setting; when not received, use Muncie altimeter setting; increase all DA/MDA 20 feet and visibility LPV all Cats 1/8 SM.</p>	

VES AWOS-3T <b>125.9</b>	COLUMBUS APP CON <b>118.425 352.05</b>	UNICOM <b>123.0 (CTAF)</b>
-----------------------------	---	-------------------------------



ELEV 1123	TDZE 1123
-----------	-----------



CATEGORY	A	B	C	D
LPV DA		1495-1	372 (400-1)	NA
LNAV/ VNAV DA		1449-1	326 (400-1)	NA
LNAV MDA	1540-1	417 (500-1)	1540-1 3/8 417 (500-1 3/8)	NA
CIRCLING	1620-1	497 (500-1)	1820-2 697 (700-2)	NA

EC-2, 22 FEB 2024 to 21 MAR 2024

EC-2, 22 FEB 2024 to 21 MAR 2024