

WINCHESTER, INDIANA

AL-6189 (FAA)

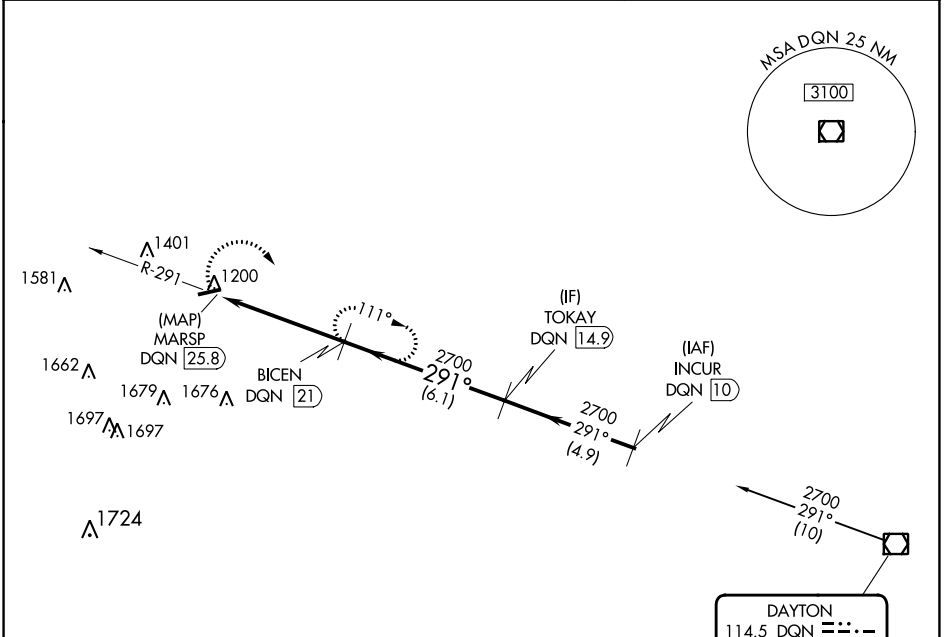
24025

VOR/DME DQN <b>114.5</b> Chan <b>92</b>	APP CRS <b>291°</b>	Rwy Idg TDZE Apt Elev <b>N/A</b> <b>N/A</b> <b>1123</b>
---	------------------------	--

**VOR-A**  
RANDOLPH COUNTY (I22)

DME required. ▼ ▲ NA	MISSED APPROACH: Climbing right turn to 2700 on DQN VOR/DME R-291 to BICEN/21 DME and hold.
----------------------------	--

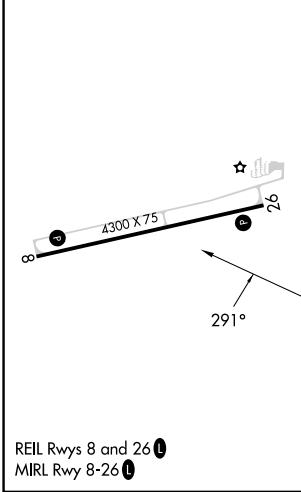
VES AWOS-3T <b>125.9</b>	COLUMBUS APP CON <b>118.425 352.05</b>	UNICOM <b>123.0</b> (CTAF) <b>1</b>
-----------------------------	---	--



EC-2, 22 FEB 2024 to 21 MAR 2024

EC-2, 22 FEB 2024 to 21 MAR 2024

ELEV 1123



Procedure NA for arrival on DQN VOR/DME  
airway radials 234 CW 329.

	2700 DQN R-291	BICEN DQN 21	BICEN DQN 21	TOKAY DQN 14.9
	MARSPP DQN 25.8	2700	2700	2700
	4.8 NM	6.1 NM		
CATEGORY	A	B	C	D
<b>C</b> CIRCLING	1700-1	577 (600-1)	1820-2 697 (700-2)	NA

WINCHESTER, INDIANA  
Amdt 10 13SEP18

40°10'N-84°56'W

RANDOLPH COUNTY (I22)  
**VOR-A**