

WAAS CH 53719 W02A	APP CRS 022°	Rwy Idg TDZE Apt Elev	4400 1068 1068
--	------------------------	-----------------------------	---

RNAV (GPS) RWY 2

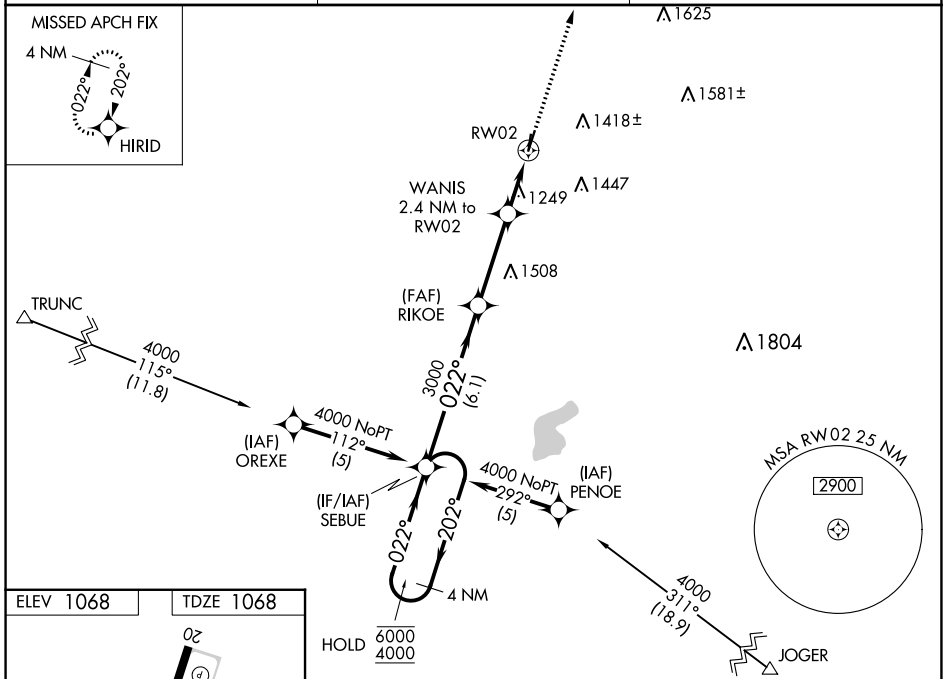
GRIMES FLD (I74)

RNP APCH.

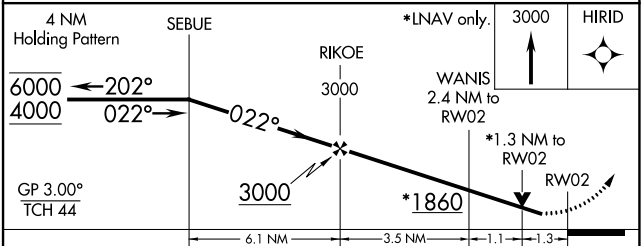
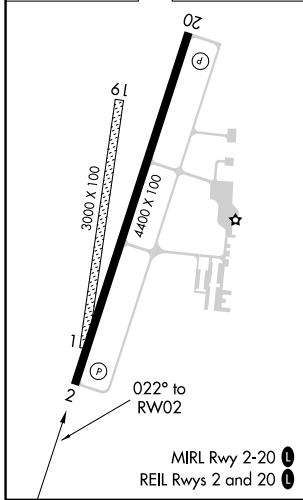
▼ Baro-VNAV and VDP NA when using Springfield altimeter setting. Rwy 2 helicopter visibility reduction below ¼ SM NA. For uncompensated Baro-VNAV systems, LNAV/VNAV NA below -17°C or above 54°C. When local altimeter setting not received, use Springfield altimeter setting and increase all DAs 44 feet, all MDAs 60 feet, increase LNAV/VNAV all Cals visibility ¼ SM, and increase Circling Cat C visibility ¼ SM. Circling NA to Rwy 1 and 19.

▲ MISSED APPROACH: Climb to 3000 direct HIRID and hold.

AWOS-3 118,325	COLUMBUS APP CON 118,425 294,5	UNICOM 122.7 (CTAF) 0
--------------------------	--	---------------------------------



ELEV 1068	TDZE 1068
-----------	-----------



CATEGORY	A	B	C	D
LPV DA	1318-1	250 (300-1)		NA
LNAV/VNAV DA	1501-1½	433 (500-1½)		NA
LNAV MDA	1500-1	432 (500-1)	1500-1¼ 432 (500-1¼)	NA
C CIRCLING	1580-1 512 (600-1)	1780-1 712 (800-1)	1800-2 732 (800-2)	NA

EC-2, 22 FEB 2024 to 21 MAR 2024

EC-2, 22 FEB 2024 to 21 MAR 2024

WAAS CH 78419 W20A	APP CRS 202°	Rwy Idg TDZE 1068 Apt Elev 1068
--	------------------------	---

RNAV (GPS) RWY 20

GRIMES FLD (I74)

RNP APCH.

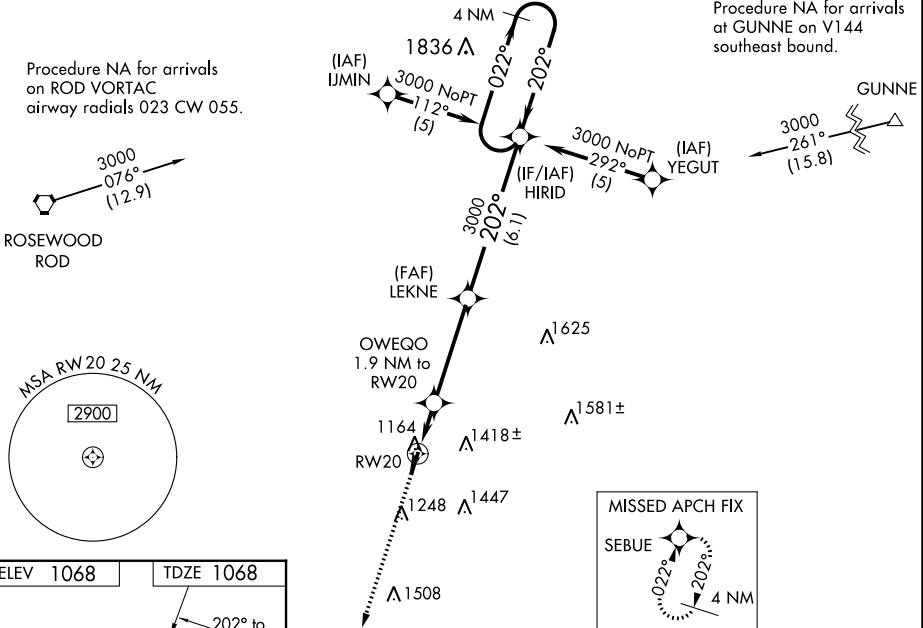
⚠ Baro-VNAV NA when using Springfield altimeter setting. For uncompensated Baro-VNAV systems, LNAV/VNAV NA below -17°C (2°F) or above 54°C (130°F). Rwy 20 helicopter visibility reduction below ¼ SM NA. When local altimeter setting not received, use Springfield altimeter setting and increase all DAs 44 feet, all MDAs 60 feet, increase LPV all Cats and LNAV Cat C visibility ¼ SM, and increase Circling Cat C visibility ¼ SM. VDP NA with Springfield altimeter setting. Circling NA to Rwy 1 and 19.

MISSED APPROACH:
Climb to 4000 direct SEBUE and hold.

AWOS-3 118.325	COLUMBUS APP CON 118.425 294.5	UNICOM 122.7 (CTAF) 0
--------------------------	--	---------------------------------

Procedure NA for arrivals on ROD VORTAC airway radials 023 CW 055.

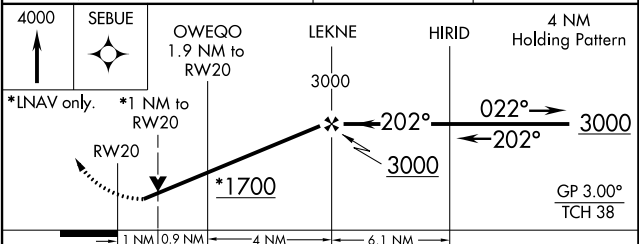
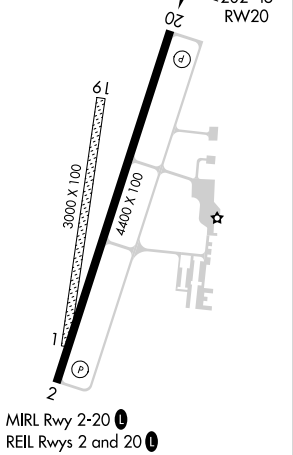
Procedure NA for arrivals at GUNNE on V144 southeast bound.



EC-2, 22 FEB 2024 to 21 MAR 2024

EC-2, 22 FEB 2024 to 21 MAR 2024

ELEV 1068	TDZE 1068
-----------	-----------

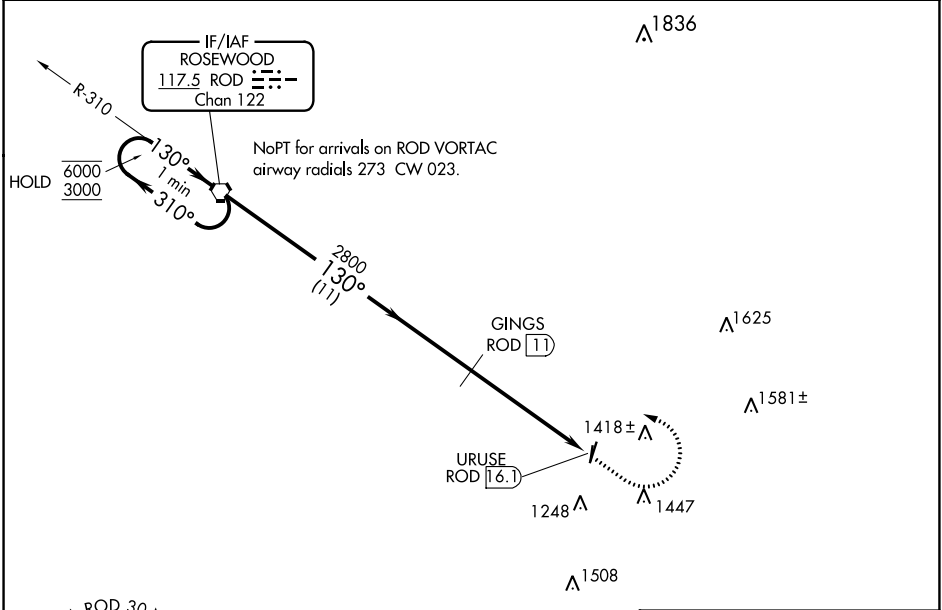


CATEGORY	A	B	C	D
LPV DA	1347-1	279 (300-1)		NA
LNAV/VNAV DA	1469-1½	401 (500-1½)		NA
LNAV MDA	1420-1	352 (400-1)		NA
C CIRCLING	1580-1 512 (600-1)	1780-1 712 (800-1)	1800-2 732 (800-2)	NA

VORTAC ROD 117.5 Chan 122	APP CRS 130°	Rwy Idg TDZE Apt Elev	N/A N/A 1068
---	------------------------	-----------------------------	---

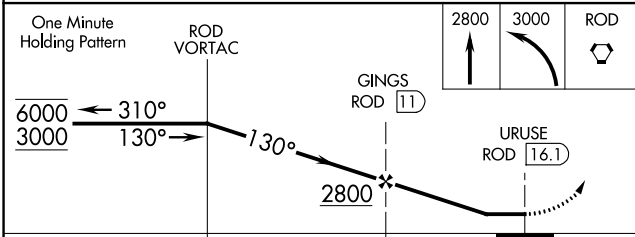
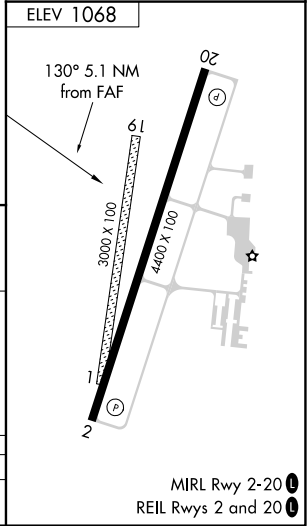
VOR-A
GRIMES FLD (I74)

DME required.		MISSED APPROACH: Climb to 2800 then climbing left turn to 3000 direct ROD VORTAC and hold.
<p>⚠ Circling NA to Rwy 1 and 19. When local altimeter setting not received, use Springfield altimeter setting and increase all MDAs 60 feet and Cat C visibility ¼ SM.</p>		
AWOS-3 118.325	COLUMBUS APP CON 118.425 294.5	UNICOM 122.7 (CTAF) 📻



EC-2, 22 FEB 2024 to 21 MAR 2024

EC-2, 22 FEB 2024 to 21 MAR 2024



CATEGORY	A	B	C	D
📻 CIRCLING	1580-1 512 (600-1)	1780-1 712 (800-1)	1800-2 732 (800-2)	NA