

APP CRS Rwy Idg **4797**
 046° TDZE **1029**
 Apt Elev **1029**

RNAV (GPS) RWY 4

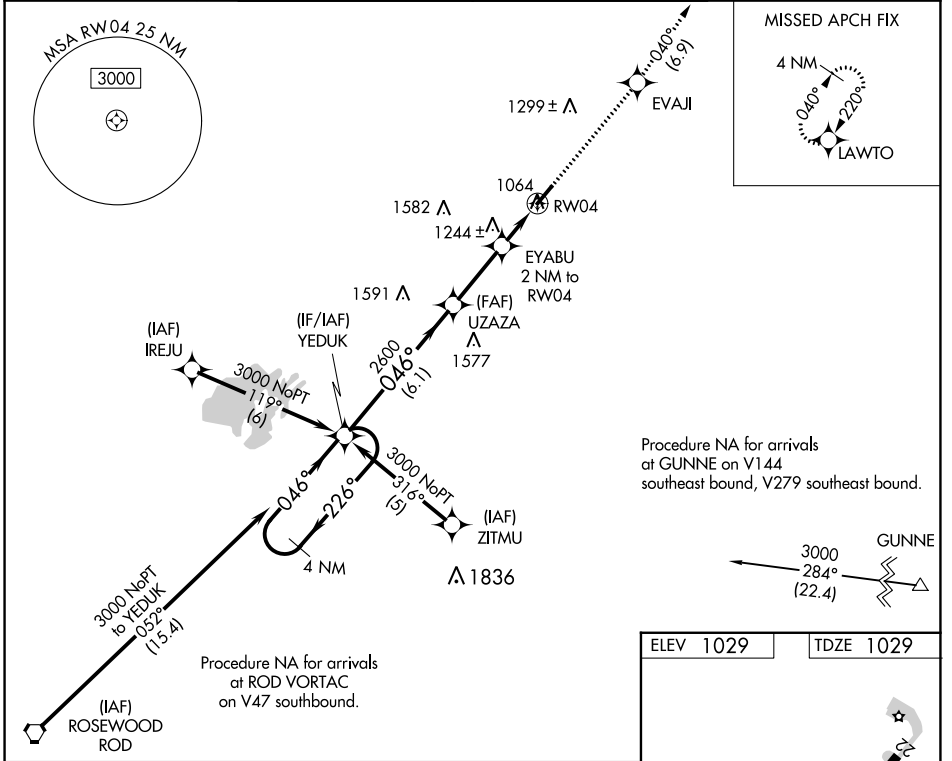
HARDIN COUNTY (I95)

RNP APCH - GPS.

NA Rwy 4 helicopter visibility reduction below 1 SM NA. Procedure NA at night. Circling NA for Cat D NW of Rwy 4-22. When local altimeter setting not received, use Lima altimeter setting and increase all MDAs 60 feet and LNAV visibility Cat C ¼ SM, and Circling visibility Cat C ¼ SM.

MISSED APPROACH: Climb to 3000 direct EVAJI and on track 040° to LAWTO and hold.

AWOS-3 **126.4** AOH ASOS **128.725** COLUMBUS APP CON **118.425 323.15** UNICOM **122.8 (CTAF) 0 ***



4 NM Holding Pattern		3000	EVAJI	tr 040°	LAWTO
YEDUK		3000			
← 226°		← 046° →	046°		
UZAZA		EYABU 2 NM to RW04	RW04		
3.04° TCH 40		2600	1700		
6.1 NM		2.8 NM	2 NM		
CATEGORY	A	B	C	D	
LNAV MDA	1560-1	531 (600-1)	1560-1½ 531 (600-1½)	1560-1¾ 531 (600-1¾)	
CIRCLING	1580-1 551 (600-1)	1620-1 591 (600-1)	1620-1½ 591 (600-1½)	1620-2 591 (600-1)	

MIRL Rwy 4-22 0

EC-2, 22 FEB 2024 to 21 MAR 2024

EC-2, 22 FEB 2024 to 21 MAR 2024