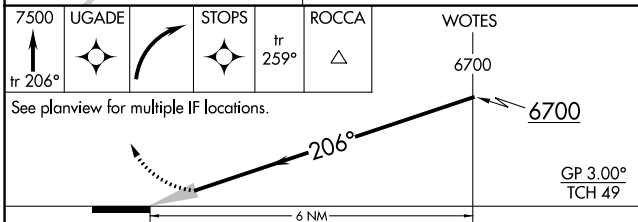
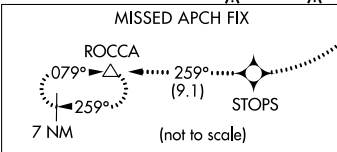
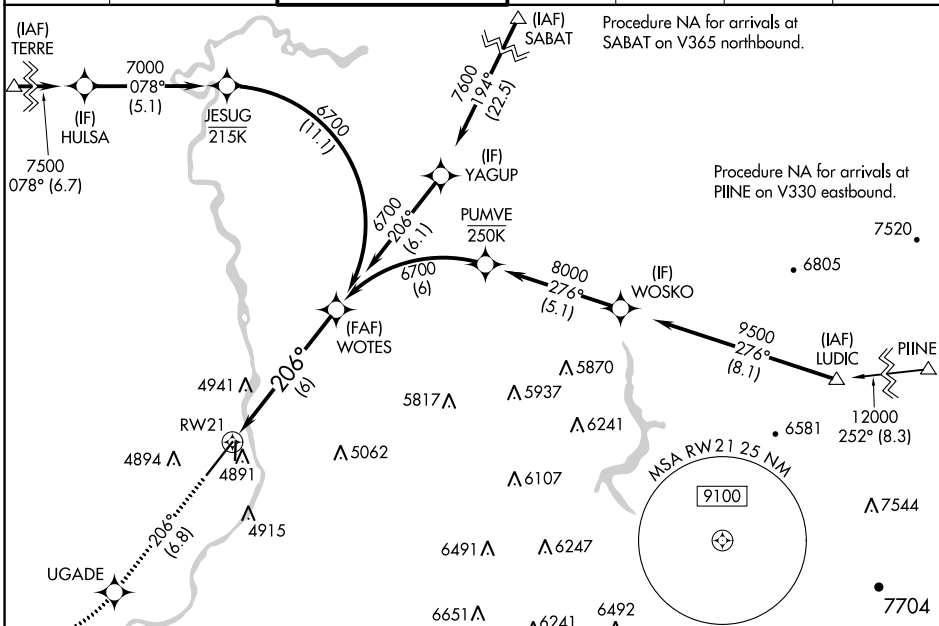


APP CRS	Rwy Idg	9002
206°	TDZE	4735
	Apt Elev	4744

RNAV (RNP) Z RWY 21

IDAHO FALLS RGNL (IDA)

RNP AR APCH-GPS.		MALSR	MISSED APPROACH: Climb to 7500 on track 206° to WOTES, right turn to STOPS, and on track 259° to ROCCA and hold.						
<p>▽ For uncompensated Baro-VNAV systems, procedure NA below -27°C or above 54°C. For inop ALS, increase RNP 0.11 visibility all Cats to RVR 4500.</p>			ATIS	SALT LAKE CENTER	IDAHO FALLS TOWER *	GND CON	CLNC DEL	GCO	UNICOM
			135,325	128.35 239.25	118.5 (CTAF) 0 257.8	121.7	121.7	121,725	122.95



ELEV 4744	D TDZE 4735
-----------	--------------------

4762 ±

4761 ±

3964 X 75

TWR 4833

35

4741

4887

9002 X 150

REIL Rwy 3

HIRL Rwy 3-21

MIRL Rwy 17-35

CATEGORY	A	B	C	D
RNP 0.11 DA		5011/24	276 (300-½)	
RNP 0.30 DA		5120/35	385 (400-¾)	

AUTHORIZATION REQUIRED

NW-1, 22 FEB 2024 to 21 MAR 2024

NW-1, 22 FEB 2024 to 21 MAR 2024