

APP CRS	Rwy Idg	3395
092°	TDZE	617
	Apt Elev	620

RNAV (GPS) RWY 9

LANSING MUNI (IGQ)

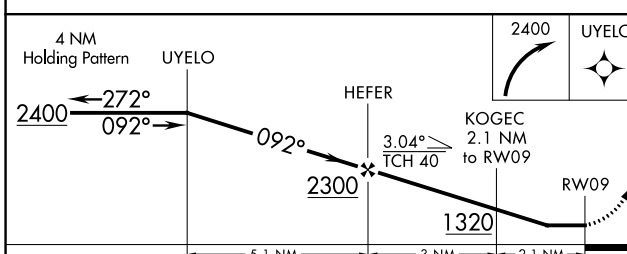
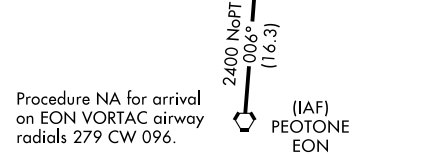
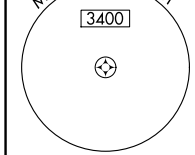
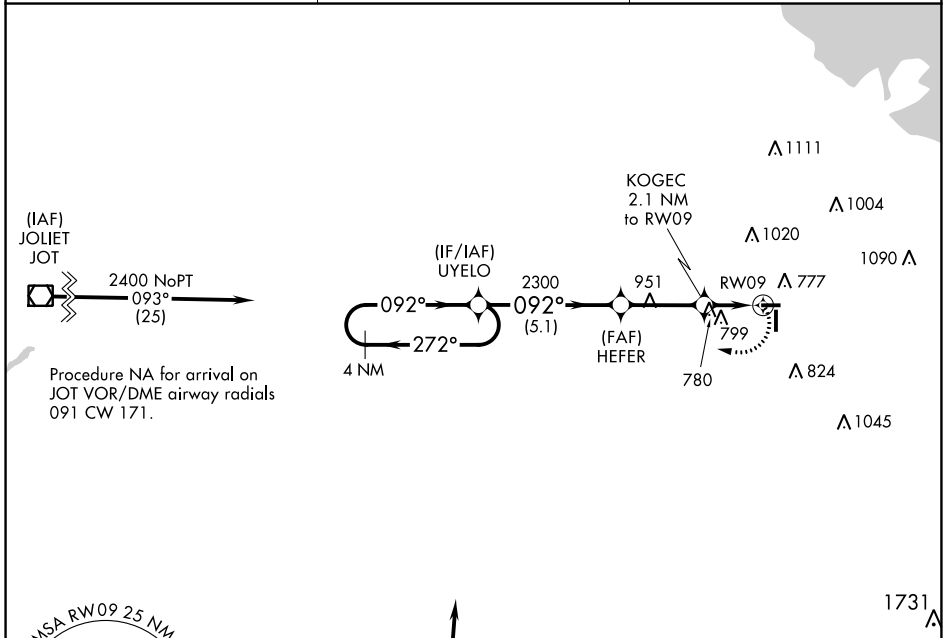
⚠ Rwy 9 Straight-in and Circling minimums NA at night.
 Rwy 9 helicopter visibility reduction below 1 SM NA.
 DME/DME RNP-0.3 NA.

MISSED APPROACH: Climbing right turn to 2400 direct UYELO and hold.

AWOS-3PT
119.275

CHICAGO APP CON
128.2 285.6

UNICOM
122.7 (CTAF) 0



ELEV 620	TDZE 617
----------	----------

092°
3395 X 75
81
4002 X 75
36

REIL Rwy 9, 18, 27, and 36
MIRL Rwy 9-27 and 18-36

CATEGORY	A	B	C	D
LNNAV MDA	1080-1	463 (500-1)	NA	
CIRCLING	1140-1	520 (600-1)	NA	

EC-3, 22 FEB 2024 to 21 MAR 2024

EC-3, 22 FEB 2024 to 21 MAR 2024