

WAAS CH <b>86841</b> <b>W30A</b>	APP CRS <b>306°</b>	Rwy Idg TDZE <b>658</b> Apt Elev <b>684</b>
--	------------------------	---

# RNAV (GPS) RWY 30

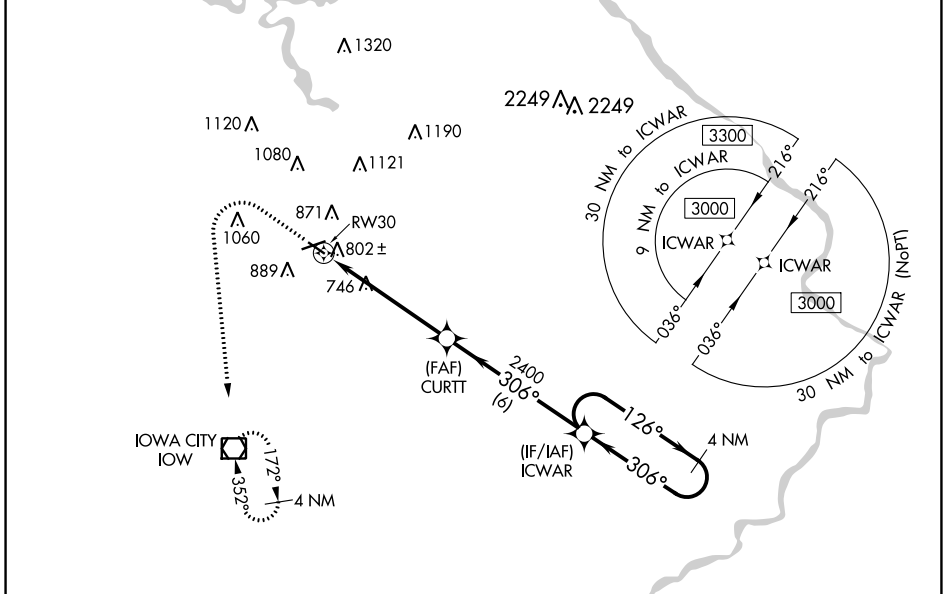
IOWA CITY MUNI (IOW)

RNP APCH - GPS.

**⚠** Circling Rwy 12 NA at night. Rwy 30 helicopter visibility reduction below ¼ SM NA. When local altimeter setting not received, use Cedar Rapids altimeter setting and increase all MDA 80 feet, LP Cat C and D visibility ½ SM, LNAV and Circling Cat C and D visibility ¼ SM.

**⚠** MISSED APPROACH: Climb to 1100 then climbing left turn to 3000 direct IOW VOR/DME and hold.

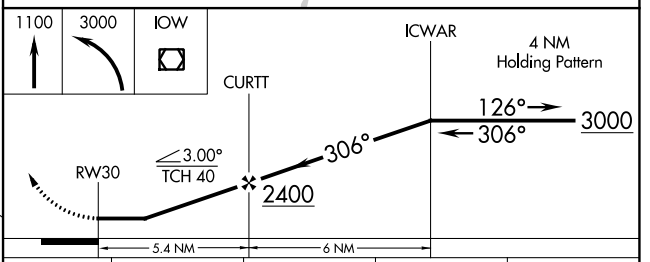
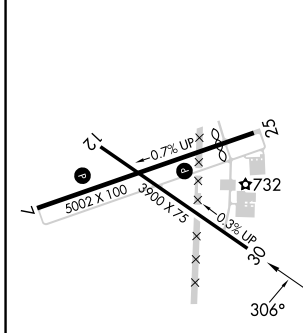
ASOS <b>128.075</b>	CEDAR RAPIDS APP CON * <b>119.7 266.8</b>	CLNC DEL <b>119.05</b>	UNICOM <b>122.8 (CTAF) 0</b>
------------------------	--	---------------------------	---------------------------------



NC-3, 22 FEB 2024 to 21 MAR 2024

NC-3, 22 FEB 2024 to 21 MAR 2024

ELEV <b>684</b>	<b>D</b>	TDZE <b>658</b>
-----------------	----------	-----------------



CATEGORY	A	B	C	D
LP MDA	1000-1 342 (400-1)			
LNAV MDA	1060-1 402 (400-1)	1060-1½ 402 (400-1½)		
<b>C</b> CIRCLING	1220-1 536 (600-1)	1240-1 556 (600-1)	1440-2¼ 756 (800-2¼)	1440-2½ 756 (800-2½)