

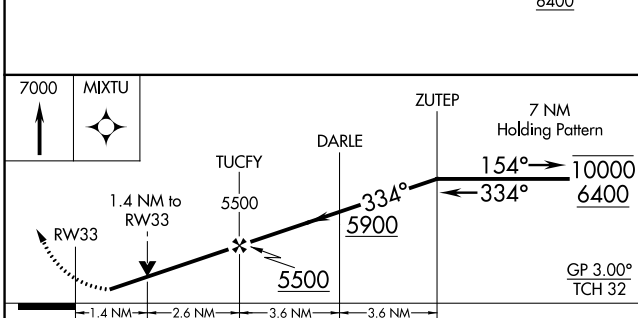
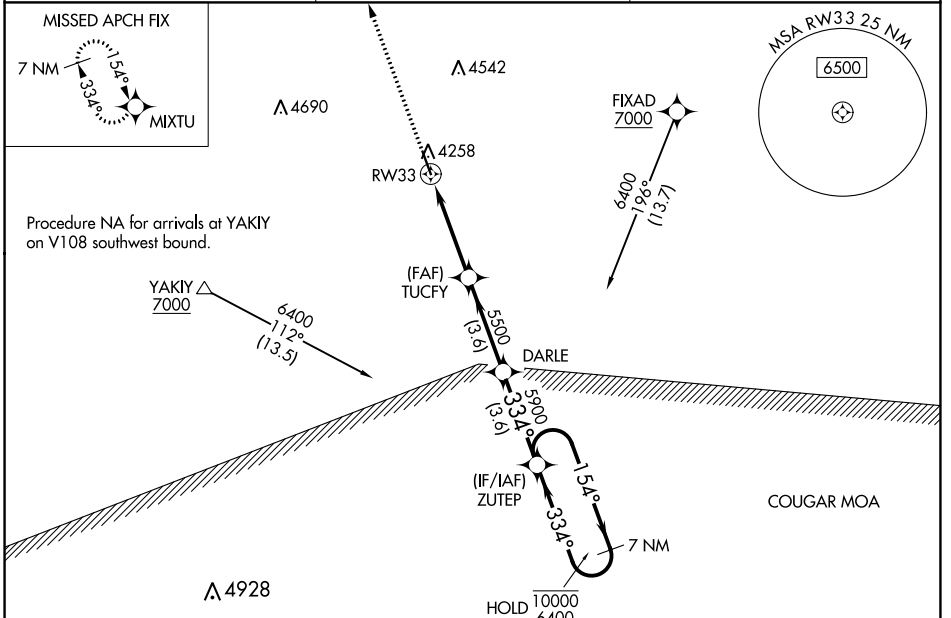
WAAS CH <b>65844</b> <b>W33A</b>	APP CRS <b>334°</b>	Rwy Idg TDZE Apt Elev	<b>5199</b> <b>4205</b> <b>4218</b>
--	------------------------	-----------------------------	---

# RNAV (GPS) RWY 33

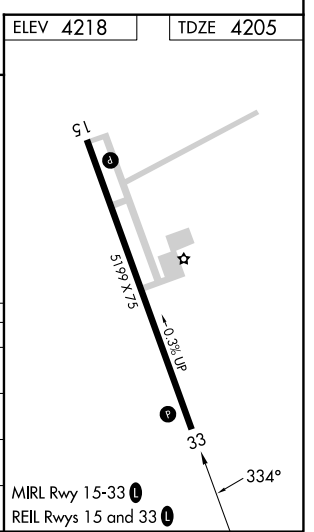
KIT CARSON COUNTY (ITR)

RNP APCH-GPS.	MISSED APPROACH: Climb to 7000 direct MIXTU and hold, continue climb-in-hold to 7000.
<p><b>▽</b> Rwy 33 helicopter visibility reduction below <math>\frac{3}{4}</math> SM NA. For uncompensated Baro-VNAV systems, LNAV/VNAV NA below -9°C or above 54°C.</p> <p><b>▲</b></p>	

ASOS <b>135.225</b>	DENVER CENTER <b>132.7 226.675</b>	UNICOM <b>122.8 (CTAF) ①</b>
------------------------	---------------------------------------	---------------------------------



CATEGORY	A	B	C	D
LPV DA		4455-1	250 (300-1)	
LNAV/VNAV DA		4455-1	250 (300-1)	
LNAV MDA	4680-1	475 (500-1)	4680-1 $\frac{3}{8}$	475 (500-1 $\frac{3}{8}$ )
CIRCLING	4680-1 462 (500-1)	4700-1 482 (500-1)	4860-1 $\frac{3}{4}$ 642 (700-1 $\frac{3}{4}$ )	4860-2 642 (700-2)



SW-1, 22 FEB 2024 to 21 MAR 2024

SW-1, 22 FEB 2024 to 21 MAR 2024