

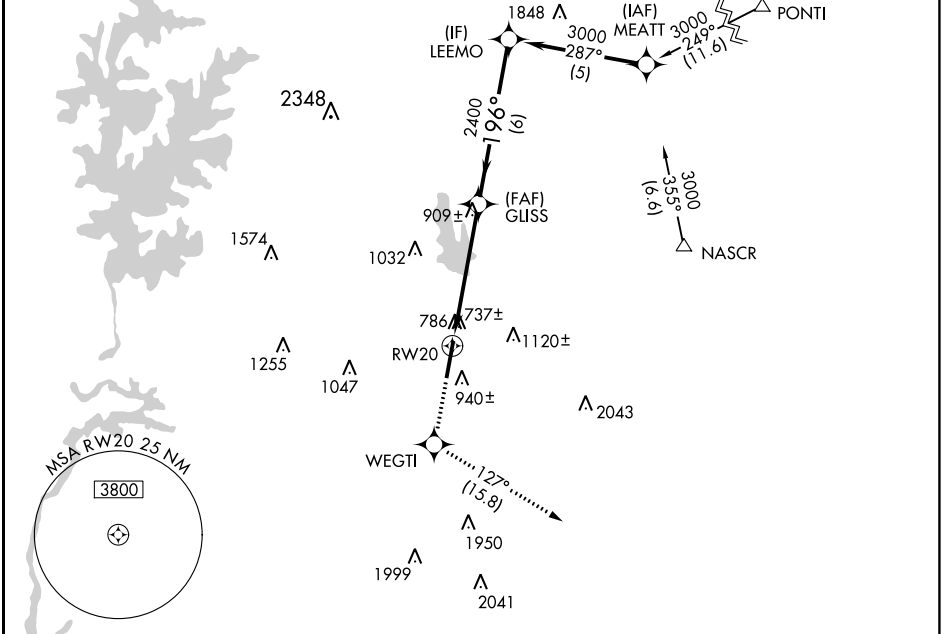
WAAS CH 56499 W20A	APP CRS 196°	Rwy Idg TDZE Apt Elev	6350 699 704
----------------------------------------	------------------------	-----------------------------	-----------------------------------------

RNAV (GPS) RWY 20

CONCORD-PADGETT RGNL (JQF)

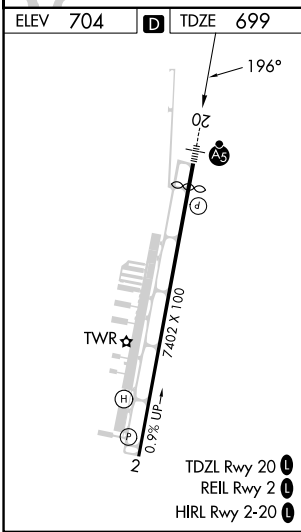
RNP APCH-GPS.	MALSR 	MISSED APPROACH: Climb to 3000 direct WEGTI and on track 127° to LOCAS and hold.
<p>▼ For uncompensated Baro-VNAV systems, LNAV/VNAV NA below -16°C or above 54°C. For inop ALS, increase LNAV/VNAV visibility all Cats to 1$\frac{3}{8}$ SM. Rwy 20 helicopter visibility reduction below $\frac{3}{4}$ SM NA.</p>		

ATIS* 133.675	CHARLOTTE APP CON 128.325 307.8	CONCORD TOWER* 134.65 (CTAF)	GND CON 121.85	CLNC DEL 118.55	CLNC DEL 127.25 (when twr closed)	UNICOM 122.95
-------------------------	-------------------------------------------	----------------------------------------	--------------------------	---------------------------	------------------------------------------------	-------------------------



SE-2, 22 FEB 2024 to 21 MAR 2024

SE-2, 22 FEB 2024 to 21 MAR 2024



ELEV 704	D	TDZE 699		
3000	WEGTI	LOCAS		
↑		△		
	tr 127°			
*LNAV only.				
RWY 20	GLISS	LEEMO		
1.8 NM	2400	3000		
*1.8 NM to RWY 20	2400	3000		
3.3 NM	2400	3000		
6 NM	2400	3000		
	GP 3.00°	TCH 44		
CATEGORY	A	B	C	D
LPV DA		1026- $\frac{3}{4}$	327 (400- $\frac{3}{4}$)	
LNAV/VNAV DA		1222-1 $\frac{1}{4}$	523 (600-1 $\frac{1}{4}$)	
LNAV MDA	1300- $\frac{3}{4}$	601 (600- $\frac{3}{4}$)	1300-1 $\frac{3}{8}$	601 (600-1 $\frac{3}{8}$)
C CIRCLING	1300-1	596 (600-1)	1480-2 $\frac{1}{4}$	1480-2 $\frac{1}{2}$
			776 (800-2 $\frac{1}{4}$)	776 (800-2 $\frac{1}{2}$)