

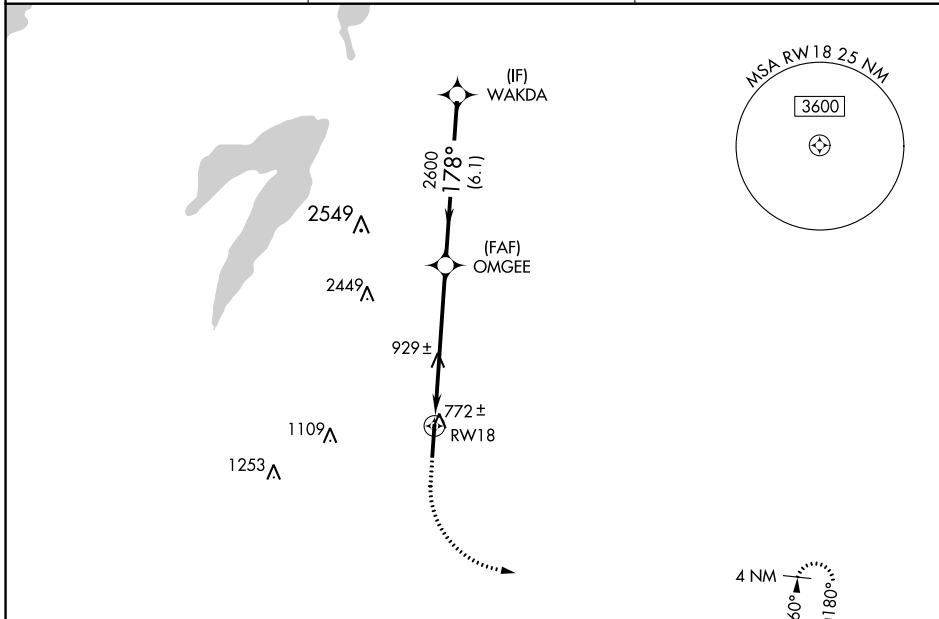
WAAS CH 62920 W18A	APP CRS 178°	Rwy Idg 6500 TDZE 727 Apt Elev 727
--	------------------------	---

RNAV (GPS) RWY 18

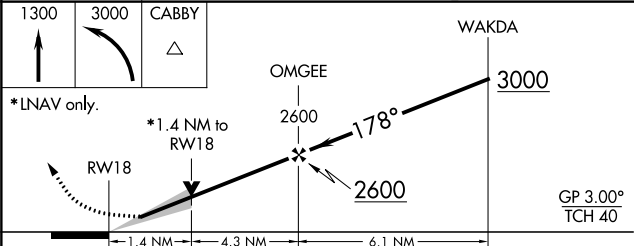
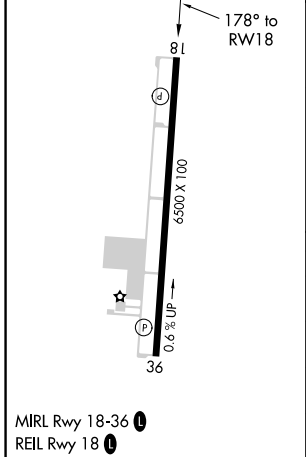
MID-WAY RGNL (JWY)

RNP APCH. ▽ ▲ For uncompensated Baro-VNAV systems, LNAV/VNAV NA below -16°C or above 54°C.	MISSED APPROACH: Climb to 1300 then climbing left turn to 3000 direct CABBY and hold.
--	---

AWOS-3 119.575	REGIONAL APP CON 125.2 343.65	UNICOM 122.975 (CTAF) 0
--------------------------	---	-----------------------------------



ELEV 727	TDZE 727
-----------------	-----------------



CATEGORY	A	B	C	D
LPV DA	927-3/4 200 (200-3/4)			
LNAV/VNAV DA	998-7/8 271 (300-7/8)			
LNAV MDA	1220-1	493 (500-1)	1220-1 3/8	493 (500-1 3/8)
CIRCLING	1220-1	493 (500-1)	1300-1 1/2 573 (600-1 1/2)	1420-2 1/4 693 (700-2 1/4)

SC-2, 22 FEB 2024 to 21 MAR 2024

SC-2, 22 FEB 2024 to 21 MAR 2024