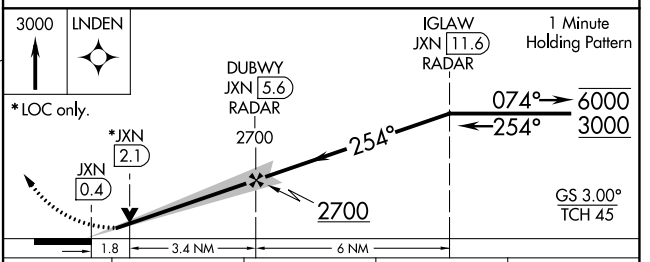
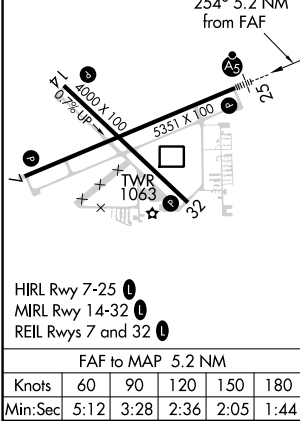
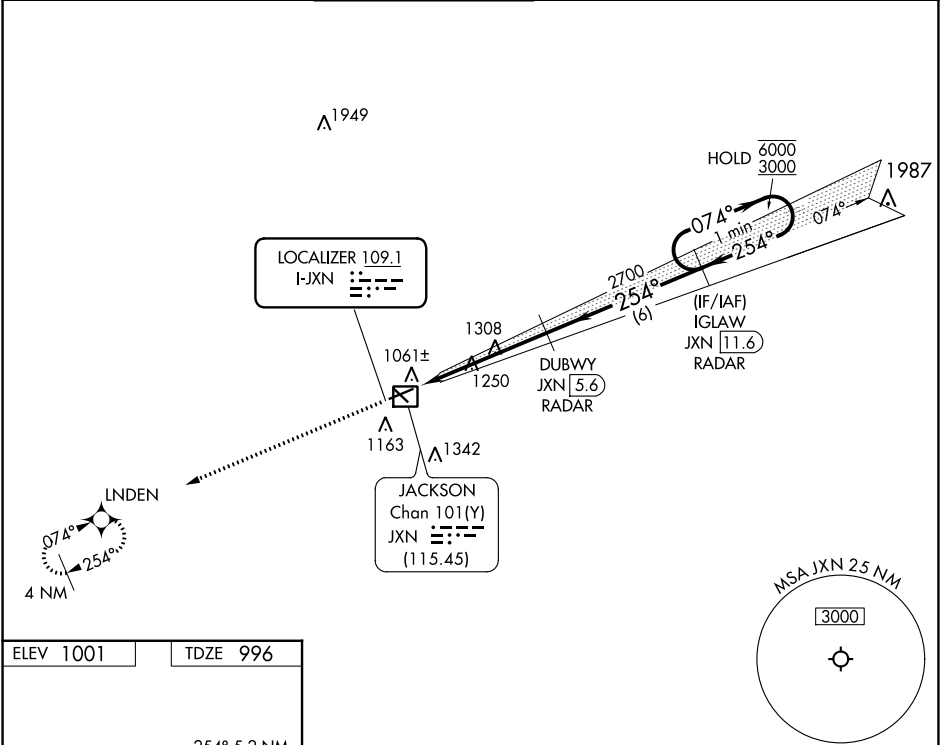


LOC I-JXN <b>109.1</b>	APP CRS <b>254°</b>	Rwy Idg TDZE Apt Elev	<b>5351</b> <b>996</b> <b>1001</b>
---------------------------	------------------------	-----------------------------	------------------------------------------

**ILS or LOC RWY 25**  
JACKSON COUNTY/REYNOLDS FLD (JXN)

RNAV-1 GPS required. RADAR required for procedure entry. DME or RADAR required.		MALSR	MISSED APPROACH: Climb to 3000 direct LNDEN and hold.		
For inop ALS, increase S-LOC 25 Cat C/D visibility to 1 3/4 SM.					
ATIS <b>125.725</b>	GREAT LAKES APP CON * <b>127.3 335.575</b>	JACKSON TOWER * <b>128.475(CTAF) 0 257.8</b>	GND CON <b>121.9</b>	CLNC DEL <b>121.9</b>	UNICOM <b>122.95</b>



CATEGORY	A	B	C	D
S-ILS 25	1196-1/2		200 (200-1/2)	
S-LOC 25	1620-1/2	624 (700-1/2)	1620-1 3/8	624 (700-1 3/8)
CIRCLING	1620-1	619 (700-1)	1660-1 3/4 659 (700-1 3/4)	1660-2 659 (700-2)

EC-1, 22 FEB 2024 to 21 MAR 2024

EC-1, 22 FEB 2024 to 21 MAR 2024