

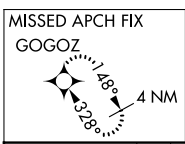
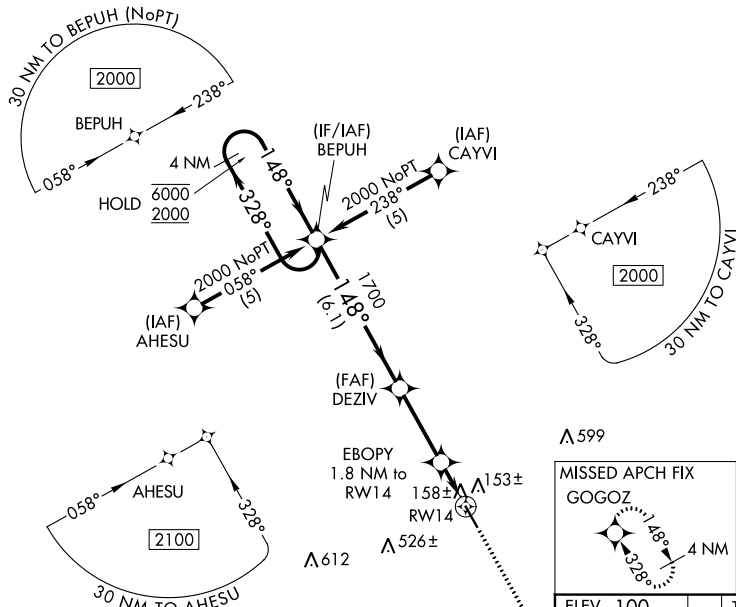
WAAS CH <b>77714</b> <b>W14A</b>	APP CRS <b>148°</b>	Rwy Idg TDZE Apt Elev	<b>5004</b> <b>100</b> <b>100</b>
--	------------------------	-----------------------------	---

# RNAV (GPS) RWY 14

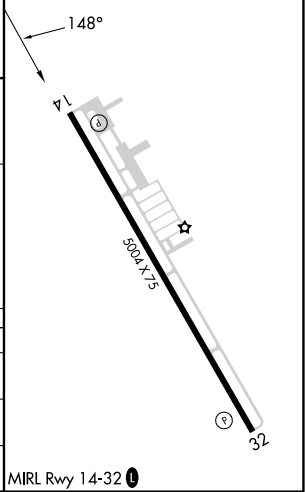
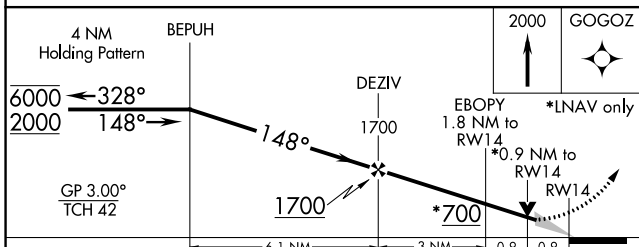
WHARTON RGNL (A.R.M)

RNP APCH. ▼ For uncompensated Baro-VNAV systems, LNAV/VNAV NA below -15°C or above 54°C.		MISSED APPROACH: Climb to 2000 direct GOGOZ and hold.
AWOS-3 <b>118.475</b>	HOUSTON CENTER <b>128.6 360.8</b>	UNICOM <b>122.7 (CTAF)</b>

614  $\Delta$



ELEV 100	TDZE 100
----------	----------



CATEGORY	A	B	C	D
LPV DA	396-1	296 (300-1)		NA
LNAV/VNAV DA	428-1¼	328 (400-1¼)		NA
LNAV MDA	420-1	320 (400-1)		NA

SC-5, 22 FEB 2024 to 21 MAR 2024

SC-5, 22 FEB 2024 to 21 MAR 2024

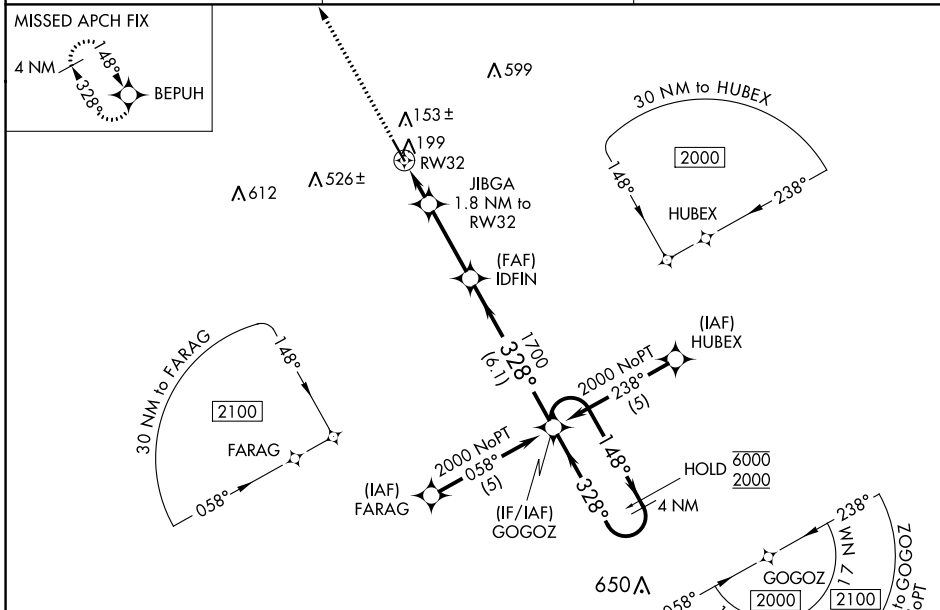
WAAS CH <b>58114</b> <b>W32A</b>	APP CRS <b>328°</b>	Rwy Idg TDZE Apt Elev	<b>5004</b> <b>99</b> <b>100</b>
--	------------------------	-----------------------------	--

# RNAV (GPS) RWY 32

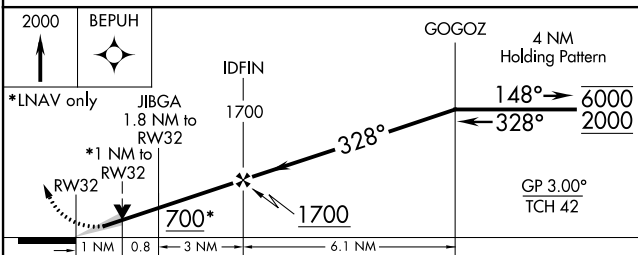
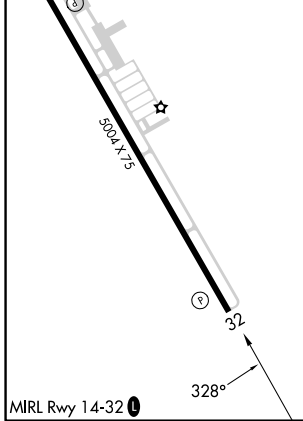
WHARTON RGNL (A.R.M)

RNP APCH.	MISSED APPROACH: Climb to 2000 direct BEPUH and hold.
For uncompensated Baro-VNAV systems, LNAV/VNAV NA below -15°C or above 54°C.	

AWOS-3 <b>118.475</b>	HOUSTON CENTER <b>128.6 360.8</b>	UNICOM <b>122.7 (CTAF)</b>
--------------------------	--------------------------------------	-------------------------------



ELEV 100	TDZE 99
----------	---------



CATEGORY	A	B	C	D
LPV DA		349-1	250 (300-1)	NA
LNAV/VNAV DA		399-1	300 (300-1)	NA
LNAV MDA		460-1	361 (400-1)	NA

SC-5, 22 FEB 2024 to 21 MAR 2024

SC-5, 22 FEB 2024 to 21 MAR 2024