

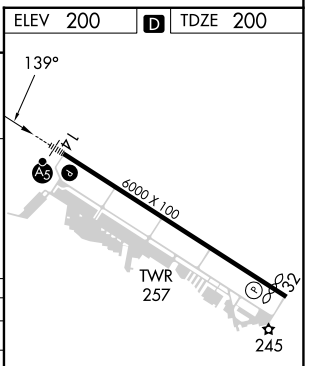
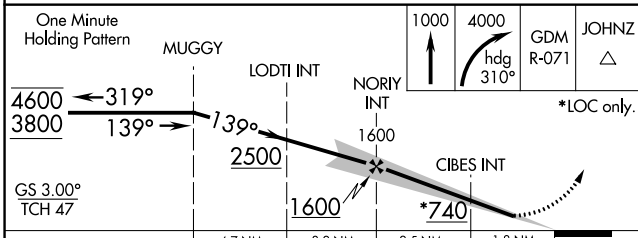
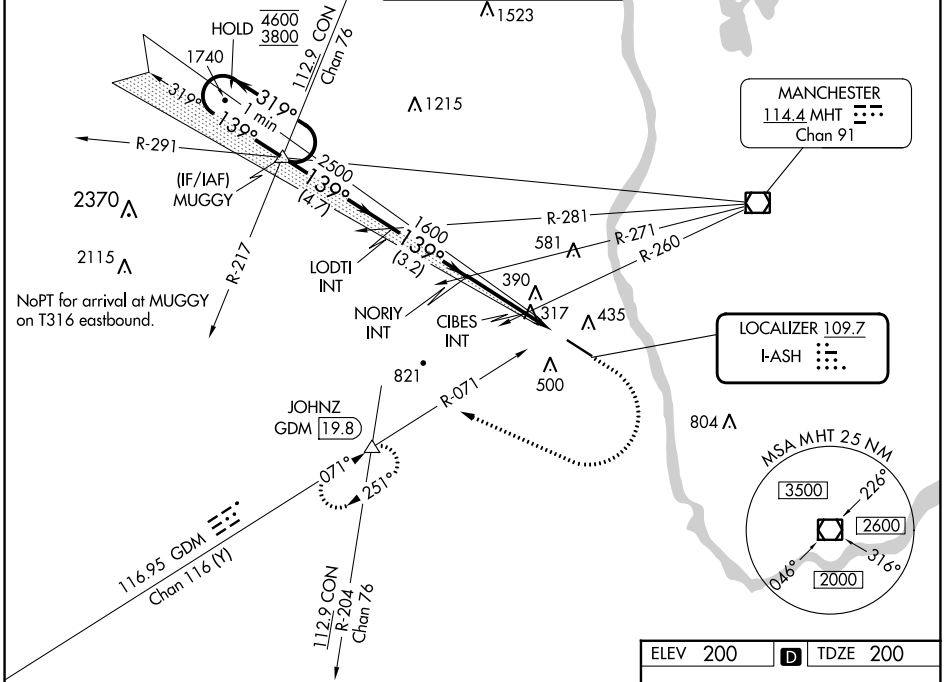
LOC I-ASH 109.7	APP CRS 139°	Rwy ldg TDZE Apt Elev	5650 200 200
---------------------------	------------------------	-----------------------------	---

ILS or LOC RWY 14

BOIRE FLD (ASH)

<p>For inop ALS, increase CIBES fix minimums S-LOC 14 Cat C/D visibility to 1 SM.</p>	<p>MALS R</p>	<p>MISSED APPROACH: Climb to 1000 then climbing right turn to 4000 on heading 310° and GDM R-071 to JOHNZ INT/GDM 19.8 DME and hold, continue climb-in-hold to 4000.</p>
		<p>ATIS 125.1</p>

BOSTON APP CON 124.9 269.075	NASHUA TOWER ★ 133.2 (CTAF)	GND CON 121.8	CLNC DEL 121.8
--	---------------------------------------	-------------------------	--------------------------



CATEGORY	A	B	C	D
S-ILS 14	400-½ 200 (200-½)			
S-LOC 14	740-½	540 (600-½)	740-1	540 (600-1)
CIRCLING	820-1 620 (700-1)	840-1 640 (700-1)	900-2 700 (700-2)	1000-2½ 800 (800-2½)
CIBES FIX MINIMUMS (DUAL VOR RECEIVERS REQUIRED)				
S-LOC 14	580-½	380 (400-½)	580-¾	380 (400-¾)
CIRCLING	820-1 620 (700-1)	840-1 640 (700-1)	900-2 700 (700-2)	1000-2½ 800 (800-2½)

ELEV 200		TDZE 200			
HIRL Rwy 14-32					
REIL Rwy 32					
FAF to MAP 4.3 NM					
Knots	60	90	120	150	180
Min:Sec	4:18	2:52	2:09	1:43	1:26

NE-1, 22 FEB 2024 to 21 MAR 2024

NE-1, 22 FEB 2024 to 21 MAR 2024

WAAS CH 97730 W14A	APP CRS 139°	Rwy Idg 5650 TDZE 200 Apt Elev 200
--	------------------------	---


RNAV (GPS) RWY 14

BOIRE FLD (ASH)


RNP APCH.

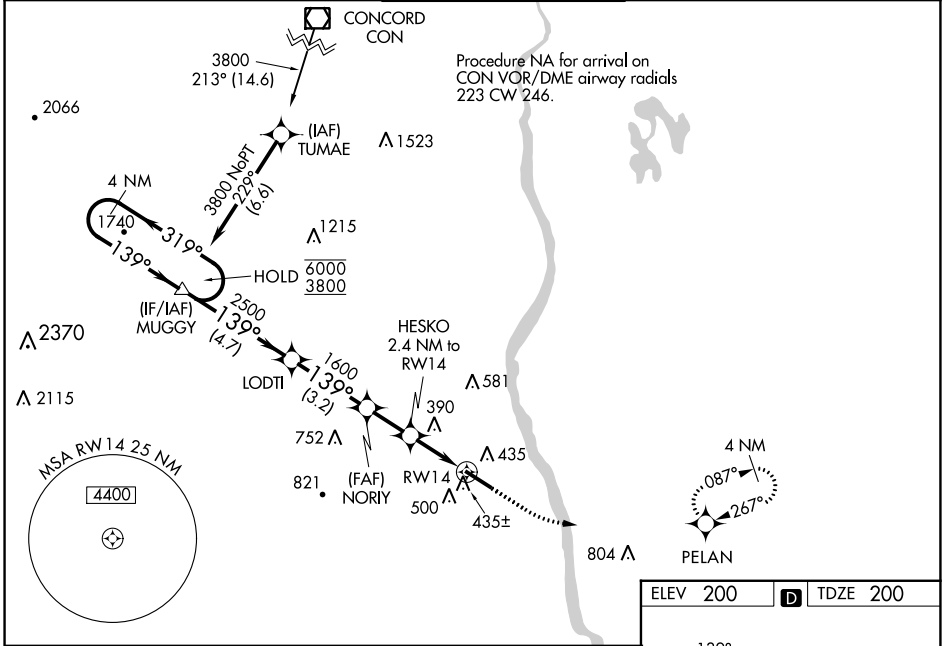
▼ For uncompensated Baro-VNAV systems, LNAV/VNAV NA below -15°C or above 54°C. For inop ALS, increase LNAV Cat C/D visibility to 1 3/8 SM.

MALSRL



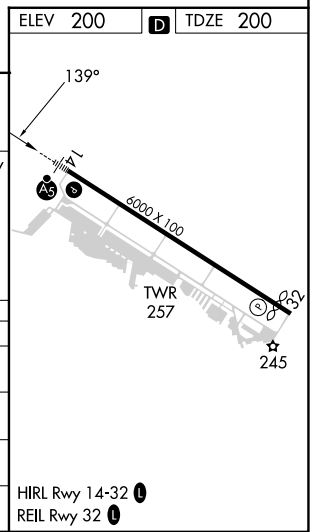
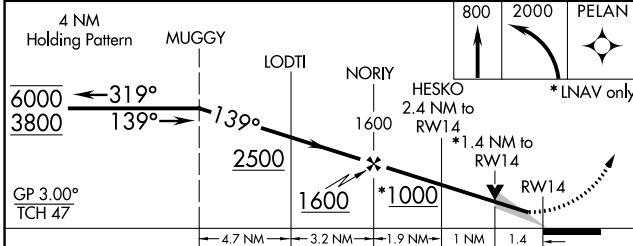
MISSED APPROACH:
Climb to 800 then climbing left turn to 2000 direct PELAN and hold.


ATIS 125.1	BOSTON APP CON 124.9 269.075	NASHUA TOWER * 133.2 (CTAF) 	GND CON 121.8	CLNC DEL 121.8
----------------------	--	---	-------------------------	--------------------------



NE-1, 22 FEB 2024 to 21 MAR 2024

NE-1, 22 FEB 2024 to 21 MAR 2024



CATEGORY	A	B	C	D
LPV DA		400-1/2	200 (200-1/2)	
LNAV/VNAV DA		596-5/8	396 (400-5/8)	
LNAV MDA	700-1/2	500 (500-1/2)	700-1	500 (500-1)
 CIRCLING	820-1 620 (700-1)	840-1 640 (700-1)	900-2 700 (700-2)	1000-2 1/2 800 (800-2 1/2)

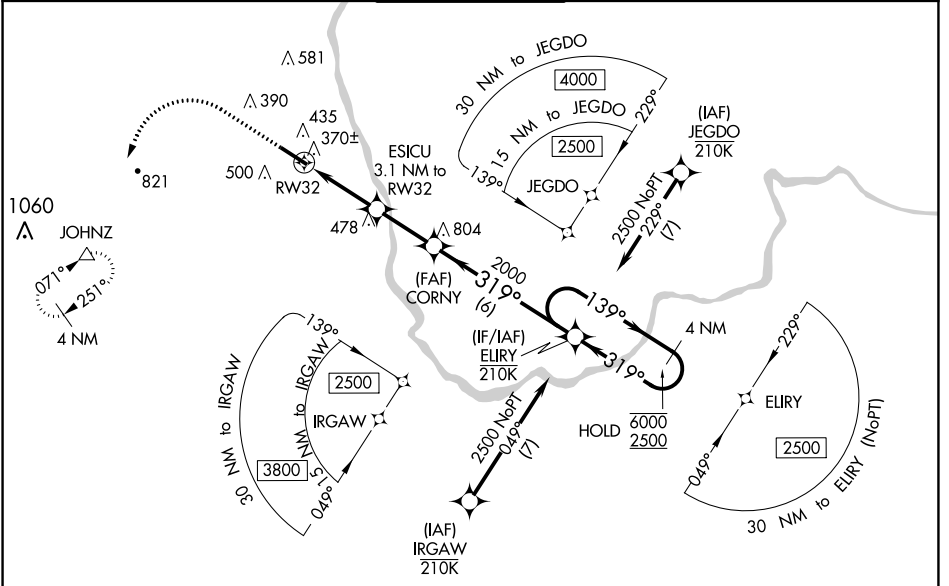
WAAS CH 73030 W32A	APP CRS 319°	Rwy Idg TDZE Apt Elev	5650 193 200
---------------------------------	------------------------	-----------------------------	---

RNAV (GPS) RWY 32

BOIRE FLD (ASH)

RNP APCH.		MISSED APPROACH: Climb to 800 then climbing left turn to 4000 direct JOHNZ and hold, continue climb-in-hold to 4000.		
⚠ Rwy 32 helicopter visibility reduction below ¾ SM NA. For uncompensated Baro-VNAV systems, LNAV/VNAV NA below -15°C or above 54°C.				

ATIS 125.1	BOSTON APP CON 124.9 269,075	NASHUA TOWER ★ 133.2 (CTAF) ①	GND CON 121.8	CLNC DEL 121.8
----------------------	--	---	-------------------------	--------------------------



NE-1, 22 FEB 2024 to 21 MAR 2024

NE-1, 22 FEB 2024 to 21 MAR 2024

ELEV 200	TDZE 193
----------	----------

CATEGORY	A	B	C	D
LPV DA		477-7/8	284 (300-7/8)	
LNAV/VNAV DA		633-1 1/4	440 (500-1 1/4)	
LNAV MDA	620-1	427 (500-1)	620-1 1/4	427 (500-1 1/4)
CIRCLING	820-1 620 (700-1)	840-1 640 (700-1)	900-2 700 (700-2)	1000-2 1/2 800 (800-2 1/2)

HIRL Rwy 14-32 ①
REIL Rwy 32 ①