

| | | |
|--|------------------------|---|
| WAAS CH 70637 W01A | APP CRS 008° | Rwy Idg 4501 TDZE 67 Apt Elev 67 |
|--|------------------------|---|

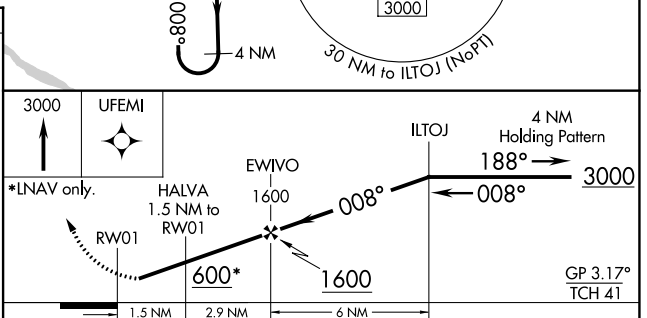
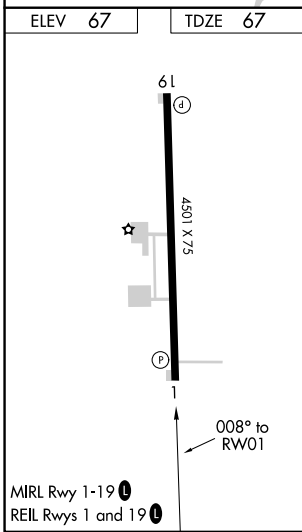
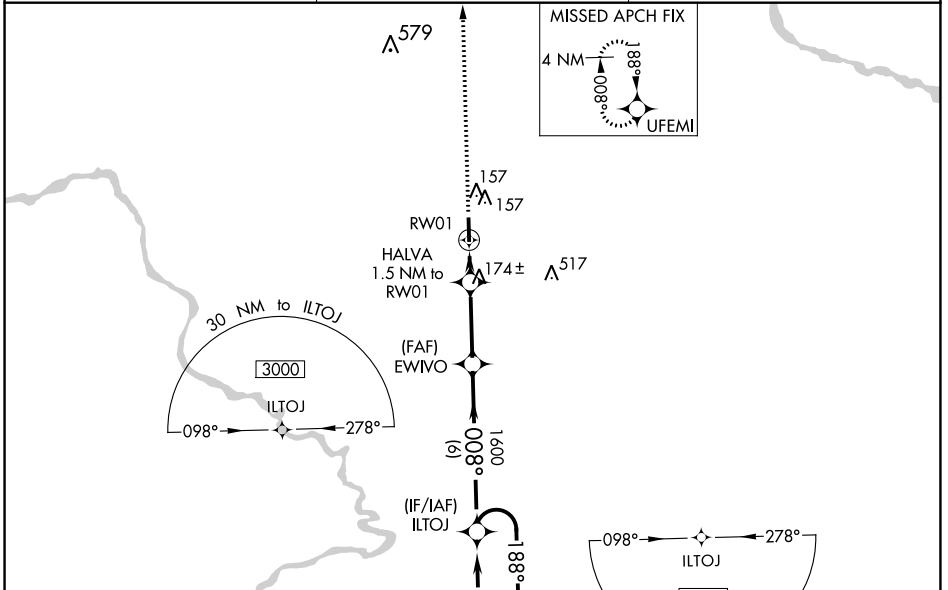
RNAV (GPS) RWY 1

TRI-COUNTY AT HENRY JOYNER FLD (A.SJ)

⚠ DME/DME RNP-0.3 NA. Night Landing: Rwy 1 NA. When local altimeter setting not received, use Franklin altimeter setting and increase all DA 67 feet and all MDA 80 feet; increase LPV all Cats visibility 1/8 mile, LNAV Cats C/D visibility 3/8 mile and Circling Cat D visibility 1/4 mile. Baro-VNAV NA when using Franklin altimeter setting. For uncompensated Baro-VNAV systems, LNAV/VNAV NA below -15°C (5°F) or above 54°C (130°F). Helicopter visibility reduction below 1 SM NA.

MISSED APPROACH:
Climb to 3000 direct UFEMI and hold, continue climb-in-hold to 3000.

| | | |
|--------------------------|---|--|
| AWOS-3 119.075 | WASHINGTON CENTER 123.85 279.65 | UNICOM 122.8 (CTAF) 📻 |
|--------------------------|---|--|



| CATEGORY | A | B | C | D |
|-------------------|-------|-------------|------------------------|------------------------|
| LPV DA | 359-1 | 292 (300-1) | | NA |
| LNAV/VNAV DA | 322-1 | 255 (300-1) | | NA |
| LNAV MDA | 440-1 | | 373 (400-1) | |
| C CIRCLING | 580-1 | 513 (600-1) | 580-1½ 513 (600-1½) | 820-2½ 753 (800-2½) |

SE-2, 22 FEB 2024 to 21 MAR 2024

SE-2, 22 FEB 2024 to 21 MAR 2024

| | | | |
|--|------------------------|-----------------------------|---------------------------------------|
| WAAS CH 77837 W19A | APP CRS 188° | Rwy Idg TDZE Apt Elev | 4501 66 67 |
|--|------------------------|-----------------------------|---------------------------------------|

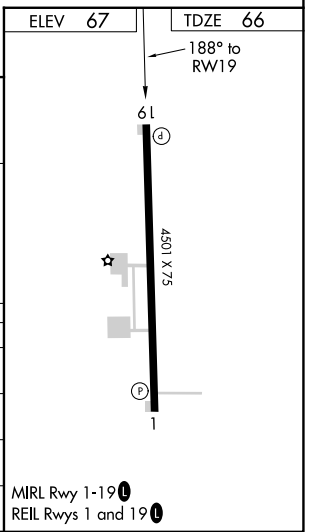
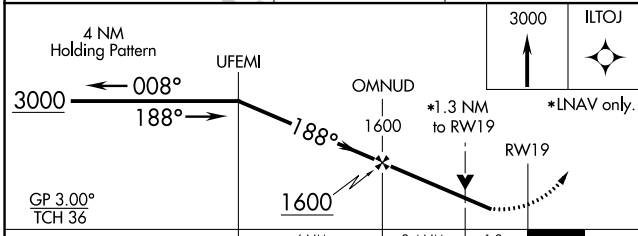
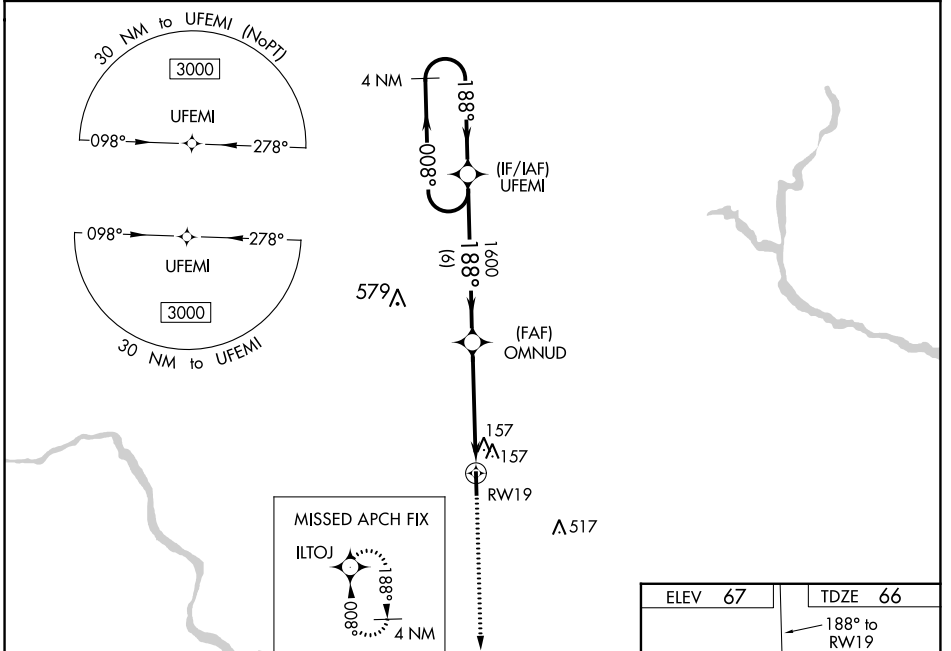
RNAV (GPS) RWY 19

TRI-COUNTY AT HENRY JOYNER FLD (ASJ)

⚠ DME/DME RNP-0.3 NA. Night Landing: Rwy 1 NA. VDP and Baro-VNAV NA when using Franklin altimeter setting. When local altimeter setting not received, use Franklin altimeter setting and increase all DA 67 feet and all MDA 80 feet; increase LPV and LNAV/VNAV all Cats visibility ¼ mile and LNAV Cat C/D visibility ½ mile. For uncompensated Baro-VNAV systems, LNAV/VNAV NA below -15°C (5°F) or above 54°C (130°F). Helicopter visibility reduction below ¾ SM NA.

MISSED APPROACH: Climb to 3000 direct ILTOJ and hold, continue climb-in-hold to 3000.

| | | |
|--------------------------|---|---------------------------------|
| AWOS-3 119.075 | WASHINGTON CENTER 123.85 279.65 | UNICOM 122.8 (CTAF) 0 |
|--------------------------|---|---------------------------------|



| CATEGORY | A | B | C | D |
|-------------------|--------|-------------|------------------------|------------------------|
| LPV DA | 353-1 | | 287 (300-1) | |
| LNAV/VNAV DA | 430-1¼ | | 364 (400-1¼) | |
| LNAV MDA | 520-1 | 454 (500-1) | 520-1⅜ | 454 (500-1⅜) |
| C CIRCLING | 580-1 | 513 (600-1) | 580-1½ 513 (600-1½) | 820-2½ 753 (800-2½) |

MIRL Rwy 1-19 **0**
REIL Rwy 1 and 19 **0**

SE-2, 22 FEB 2024 to 21 MAR 2024

SE-2, 22 FEB 2024 to 21 MAR 2024