

WAAS CH 63138 W13A	APP CRS 136°	Rwy ldg 3401 TDZE 754 Apt Elev 754
--	------------------------	---

RNAV (GPS) RWY 13

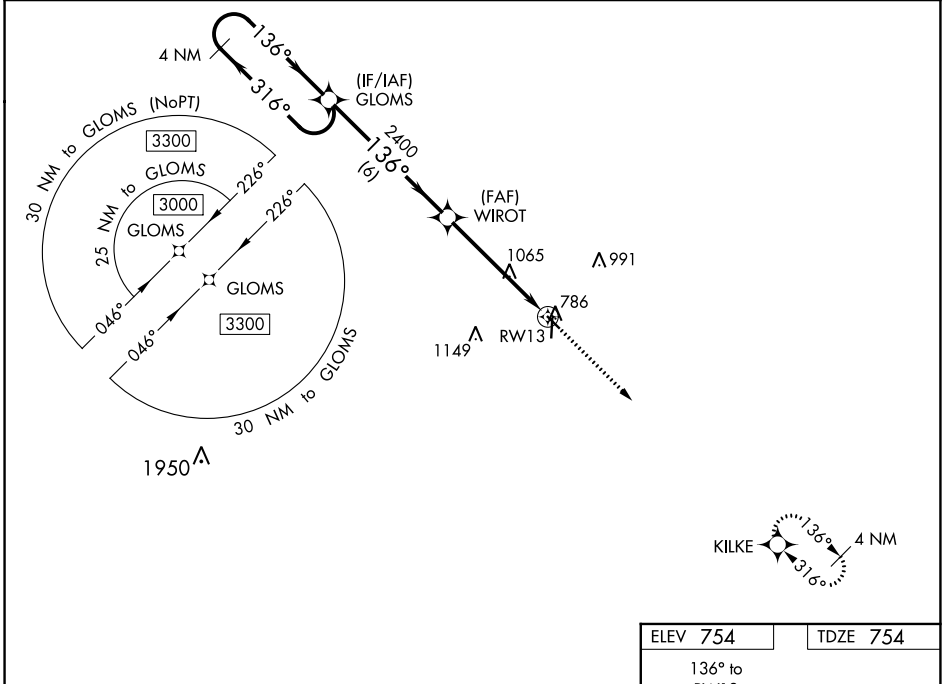
WASHINGTON MUNI (A WG)

RNP APCH.

▼ For uncompensated Baro-VNAV systems, LNAV/VNAV NA below -6°C (22°F) or above 54°C (130°F).
 ▲ Baro-VNAV and VDP NA when using Iowa City altimeter setting. When local altimeter setting not received, use Iowa City altimeter setting; increase LPV DA to 1066 feet, LNAV/VNAV DA to 1282 feet; increase all MDAs 80 feet and visibility LNAV and Circling Cat C ¼ SM.

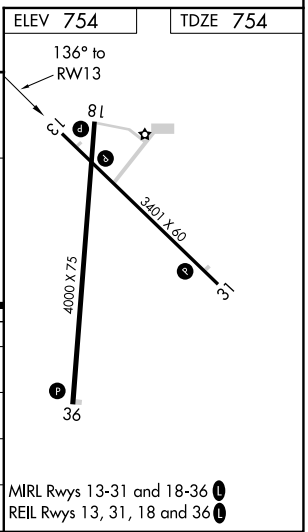
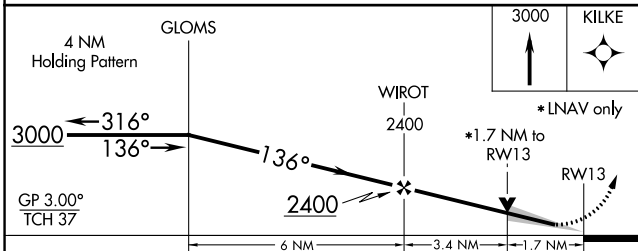
MISSED APPROACH:
Climb to 3000 direct KILKE and hold.

AWOS-3 127.825	CHICAGO CENTER 135.6 370.95	UNICOM 122.7 (CTAF) 0
--------------------------	---------------------------------------	---------------------------------



NC-3, 22 FEB 2024 to 21 MAR 2024

NC-3, 22 FEB 2024 to 21 MAR 2024



CATEGORY	A	B	C	D
LPV DA	1004-1 250 (300-1)			NA
LNAV/VNAV DA	1220-1½ 466 (500-1½)			NA
LNAV MDA	1320-1 566 (600-1)	1320-1½ 566 (600-1½)		NA
CIRCLING	1320-1 566 (600-1)	1500-2¼ 746 (800-2¼)		NA

MIRL Rwys 13-31 and 18-36
REIL Rwys 13, 31, 18 and 36

WAAS CH 45816 W18A	APP CRS 184°	Rwy Idg TDZE 752 Apt Elev 754
--	------------------------	---

RNAV (GPS) RWY 18

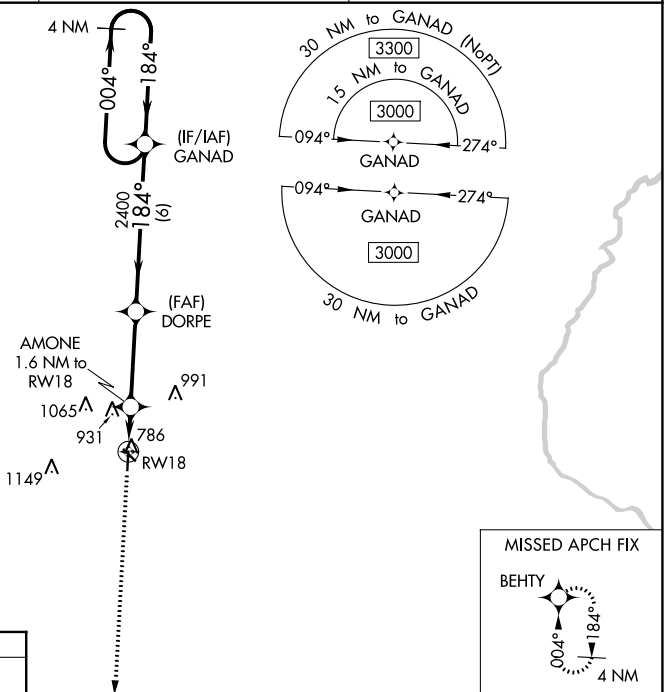
WASHINGTON MUNI (A WG)

RNP APCH.

▼ For uncompensated Baro-VNAV systems, LNAV/VNAV NA below -6°C (22°F) or above 54°C (130°F).
 ▲ Baro-VNAV NA when using Iowa City altimeter setting. When local altimeter setting not received, use Iowa City altimeter setting: increase LPV DA to 1064 feet, LNAV/VNAV DA to 1116 feet; increase all MDA 80 feet and visibility LNAV and Circling Cat C ¼ SM.

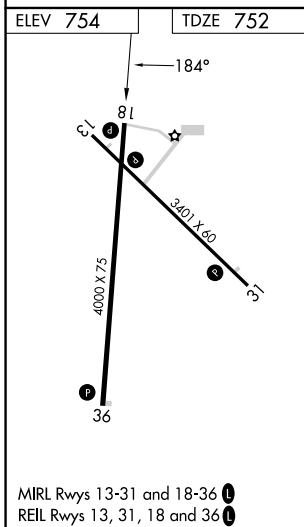
MISSED APPROACH:
 Climb to 3000 direct
 BEHTY and hold.

AWOS-3 127.825	CHICAGO CENTER 135.6 370.95	UNICOM 122.7 (CTAF) 0
--------------------------	---------------------------------------	---------------------------------



NC-3, 22 FEB 2024 to 21 MAR 2024

NC-3, 22 FEB 2024 to 21 MAR 2024



3000	BEHTY	VGSI and RNAV glidepath not coincident (VGSI Angle 2.75/TCH 31).	GANAD	4 NM Holding Pattern
*LNAV only.	AMONE 1.6 NM to RWY 18	DORPE 2400	184°	004° → 3000
RWY 18	1300*	2400	← 184°	GP 3.00° TCH 45
	1.6 NM	3.4 NM	6 NM	
CATEGORY	A	B	C	D
LPV DA		1002-1 250 (300-1)		NA
LNAV/VNAV DA		1054-1 302 (300-1)		NA
LNAV MDA	1160-1	408 (500-1)	1160-1½ 408 (500-1½)	NA
CIRCLING	1200-1 446 (500-1)	1260-1 506 (600-1)	1500-2¼ 746 (800-2¼)	NA

WAAS CH 90538 W31A	APP CRS 316°	Rwy ldg 3401 TDZE 754 Apt Elev 754
--	------------------------	---

RNAV (GPS) RWY 31

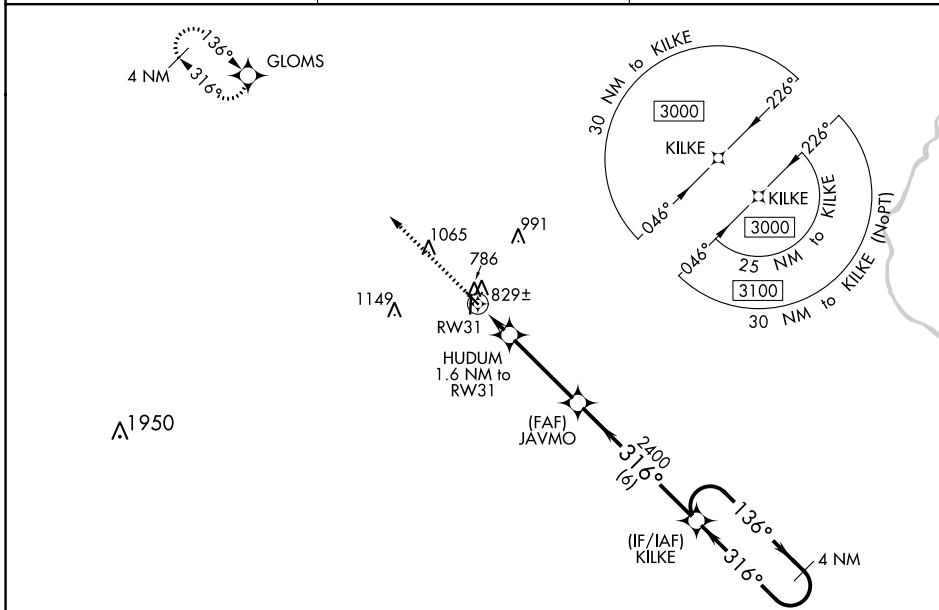
WASHINGTON MUNI (A WG)

RNP APCH.

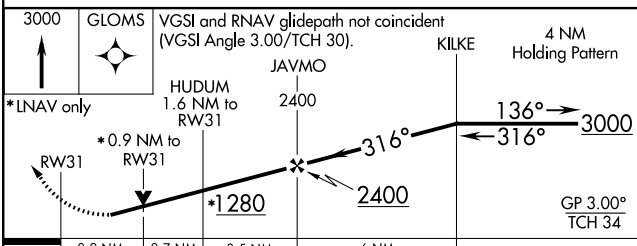
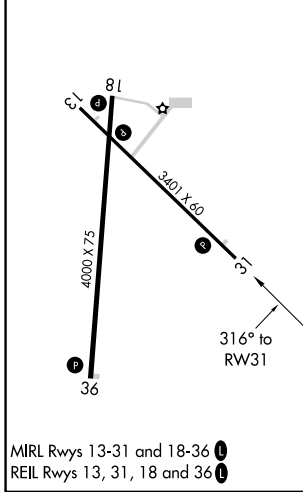
▼ For uncompensated Baro-VNAV systems, LNAV/VNAV NA below -6°C (22°F) or above 54°C (130°F).
▲ Rwy 31 helicopter visibility reduction below ¼ SM NA. Baro-VNAV and VDP NA when using Iowa City altimeter setting. When local altimeter setting not received, use Iowa City altimeter setting: increase LPV and LNAV/VNAV DA to 1066 feet; increase all MDAs 80 feet and visibility LNAV Cat C ¼ SM and Circling Cat C ¼ SM.

MISSED APPROACH:
Climb to 3000 direct GLOMS and hold.

AWOS-3 127.825	CHICAGO CENTER 135.6 370.95	UNICOM 122.7 (CTAF) 0
--------------------------	---------------------------------------	---------------------------------



ELEV 754	TDZE 754
----------	----------



CATEGORY	A	B	C	D
LPV DA	1004-1	250 (300-1)		NA
LNAV/VNAV DA	1004-1	250 (300-1)		NA
LNAV MDA	1080-1	326 (400-1)		NA
C CIRCLING	1200-1 446 (500-1)	1260-1 506 (600-1)	1500-2¼ 746 (800-2¼)	NA

NC-3, 22 FEB 2024 to 21 MAR 2024

NC-3, 22 FEB 2024 to 21 MAR 2024

WAAS CH 90416 W36A	APP CRS 004°	Rwy Idg 4000 TDZE 752 Apt Elev 754
--	------------------------	---

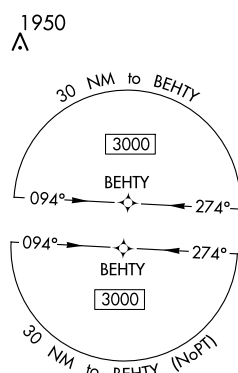
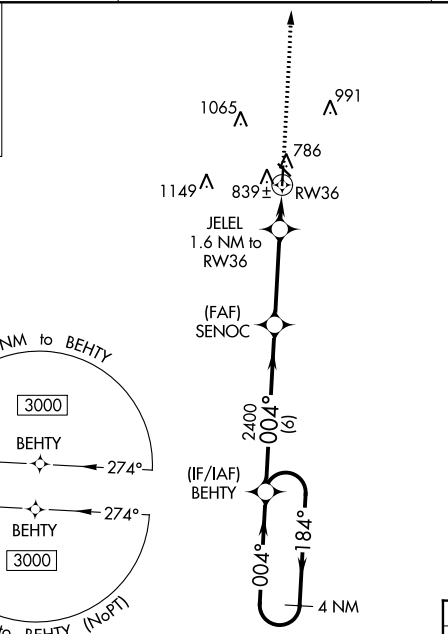
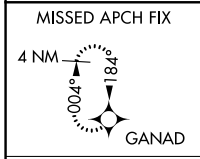
RNAV (GPS) RWY 36

WASHINGTON MUNI (A WG)

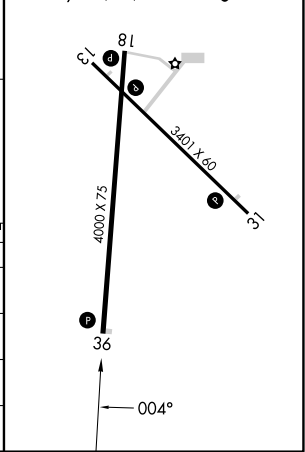
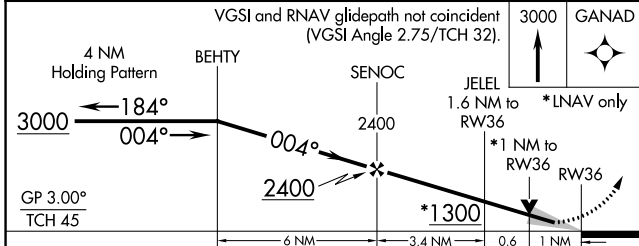
RNP APCH.
 ▼ For uncompensated Baro-VNAV systems, LNAV/VNAV NA below -6°C (22°F) or above 54°C (130°F). Baro-VNAV and VDP NA when using Iowa City altimeter setting. When local altimeter setting not received, use Iowa City altimeter setting: increase LPV DA to 1064 feet and LNAV/VNAV DA to 1072 feet; increase all MDAs 80 feet and visibility LNAV and Circling Cat C ½ SM.

MISSED APPROACH: Climb to 3000 direct GANAD and hold.

AWOS-3 127.825	CHICAGO CENTER 135.6 370.95	UNICOM 122.7 (CTAF) 0
--------------------------	---------------------------------------	---------------------------------



ELEV 754	TDZE 752
MIRL Rwy 13-31 and 18-36 0	
REIL Rwy 18, 13, 31 and 36 0	



CATEGORY	A	B	C	D
LPV DA		1002-1 250 (300-1)		NA
LNAV/VNAV DA		1010-1 258 (300-1)		NA
LNAV MDA		1100-1 348 (400-1)		NA
CIRCLING	1200-1 446 (500-1)	1260-1 506 (600-1)	1500-2¼ 746 (800-2¼)	NA

NC-3, 22 FEB 2024 to 21 MAR 2024

NC-3, 22 FEB 2024 to 21 MAR 2024

VOR/DME IOW 116.2 Chan 109	APP CRS 006°	Rwy Idg 4000 TDZE 752 Apt Elev 754
--	------------------------	---

VOR RWY 36

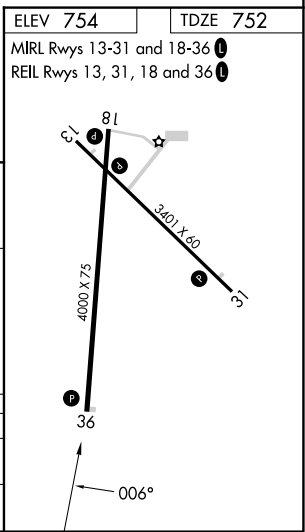
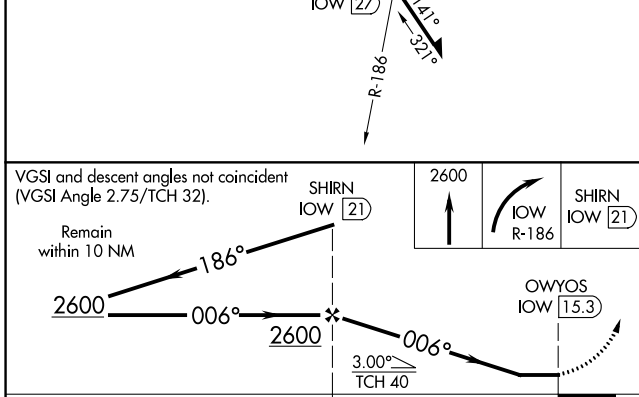
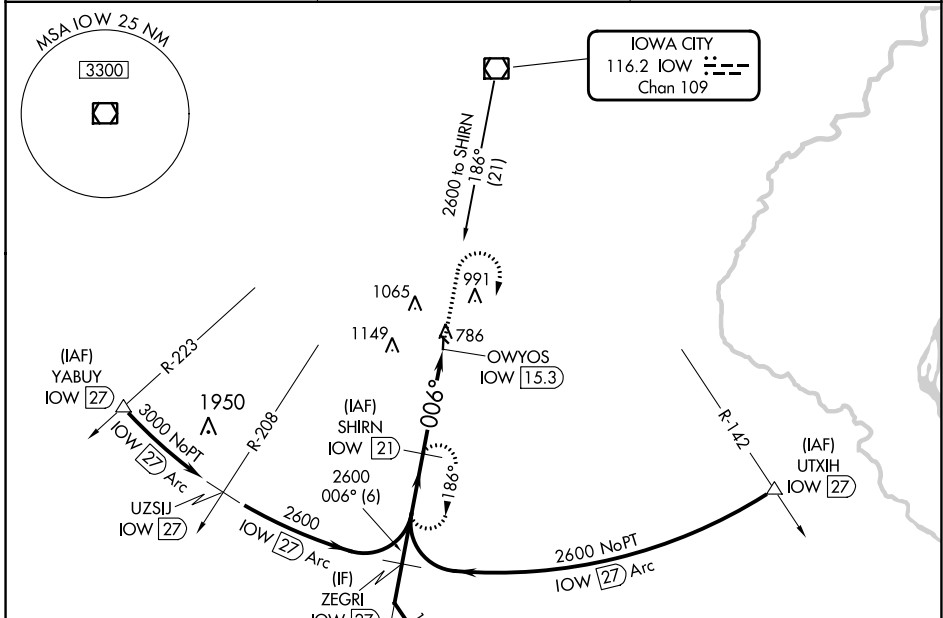
WASHINGTON MUNI (AWG)

DME Required.

⚠ When local altimeter setting not received, use Iowa City altimeter setting and increase all MDAs 80 feet and visibility S-36 Cat C and Circling Cat C 1/4 SM.

MISSED APPROACH: Climb to 2600 then right turn on IOW VOR/DME R-186 to SHIRN/21 DME and hold.

AWOS-3 127.825	CHICAGO CENTER 135.6 370.95	UNICOM 122.7 (CTAF) 0
--------------------------	---------------------------------------	---------------------------------



CATEGORY	A	B	C	D
S-36	1240-1	488 (500-1)	1240-1 ³ / ₈ 488 (500-1 ³ / ₈)	NA
C CIRCLING	1240-1 486 (500-1)	1260-1 506 (600-1)	1500-2 ¹ / ₄ 746 (800-2 ¹ / ₄)	NA

NC-3, 22 FEB 2024 to 21 MAR 2024

NC-3, 22 FEB 2024 to 21 MAR 2024