

APP CRS **129°**
 Rwy ldg **3960**
 TDZE **1215**
 Apt Elev **1216**

RNAV (GPS) RWY 12

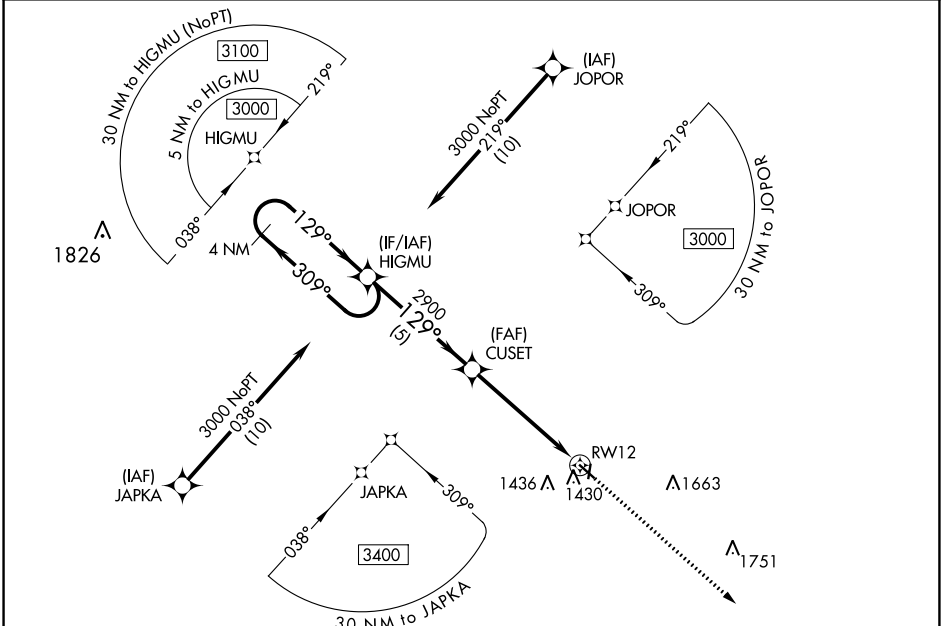
ALGONA MUNI (AXA)

RNP APCH.

⚠ When local altimeter setting not received, use Forest City altimeter setting and increase all MDA 80 feet. Procedure NA at night. Rwy 12 helicopter visibility reduction below 1 SM NA.

MISSED APPROACH: Climb to 3000 direct IFOLA and hold.

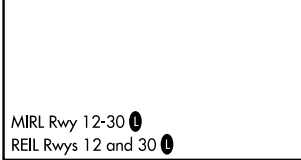
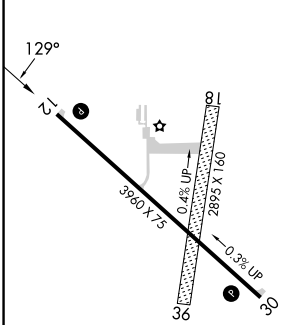
AWOS-3 **118.475** MINNEAPOLIS CENTER **134.0 288.3** UNICOM **122.8 (CTAF) 0**



NC-3, 22 FEB 2024 to 21 MAR 2024

NC-3, 22 FEB 2024 to 21 MAR 2024

ELEV 1216 TDZE 1215



3000	IFOLA			
4 NM Holding Pattern				
3000	309°	129°	129°	RWY 12
	5 NM		5.2 NM	
CATEGORY	A	B	C	D
LNAV MDA	1680-1	465 (500-1)		NA

MIRL Rwy 12-30 **0**
 REIL Rwy 12 and 30 **0**

ALGONA, IOWA
 Orig-E 07NOV19

43°05'N-94°16'W

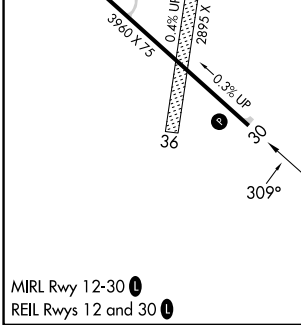
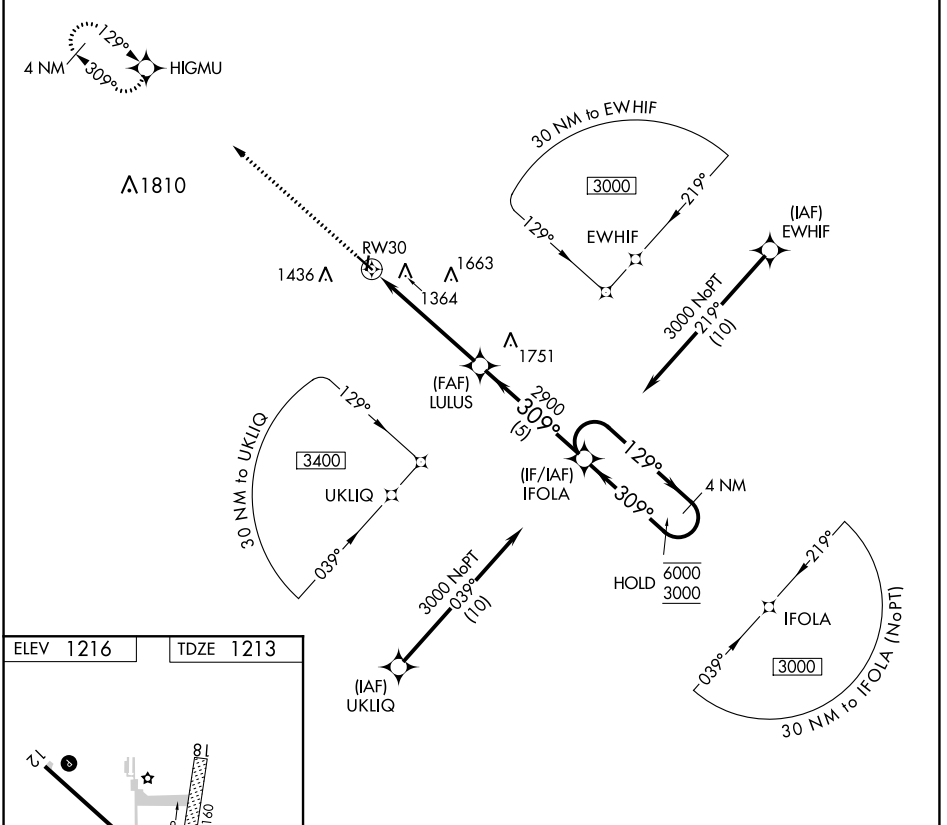
ALGONA MUNI (AXA) RNAV (GPS) RWY 12

APP CRS	Rwy Idg	3960
309°	TDZE	1213
	Apt Elev	1216

RNAV (GPS) RWY 30

ALGONA MUNI (A.X.A)

RNP APCH.	MISSED APPROACH: Climb to 3000 direct HIGMU and hold.	
<p>▼ Rwy 30 helicopter visibility reduction below 3/4 SM NA.</p>		
AWOS-3 118.475	MINNEAPOLIS CENTER 134.0 288.3	UNICOM 122.8 (CTAF) 0



3000	HIGMU	IFOLA	4 NM Holding Pattern	
1.1 NM to RW30	LULUS	2900	129° → 6000	
≤ 3.00° TCH 40	5 NM	← 309°	3000	
1.1	4.1 NM	B	C	
CATEGORY	A	B	C	D
LNAV MDA	1600-1	387 (400-1)	NA	

MIRL Rwy 12-30 0
REIL Rwy 12 and 30 0

ALGONA, IOWA
Amdt 1D 07NOV19

43°05'N-94°16'W

ALGONA MUNI (A.X.A)

RNAV (GPS) RWY 30

NC-3, 22 FEB 2024 to 21 MAR 2024

NC-3, 22 FEB 2024 to 21 MAR 2024