

MARYSVILLE, CALIFORNIA

HI-ILS or LOC Z RWY 15

LOC I-BAB 109.5	APCH CRS 145°	Rwy ldg TDZE Arpt Elev	12,001 113 113
---------------------------	-------------------------	------------------------------	---

-(USAF)

BEALE AFB (KBAB)

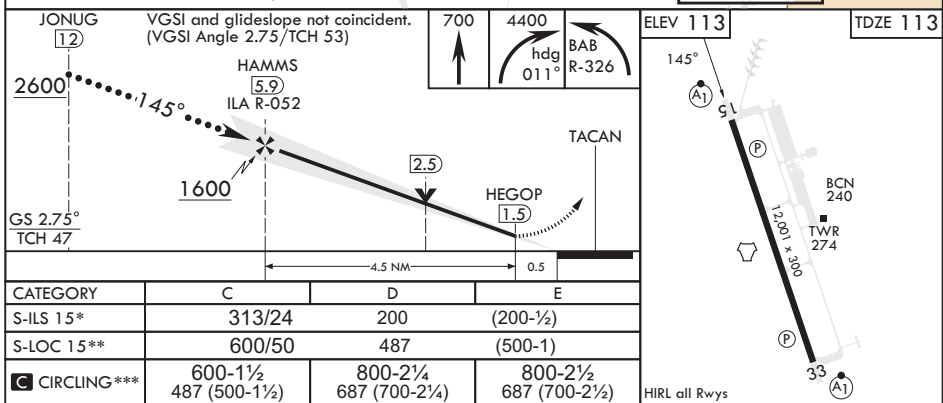
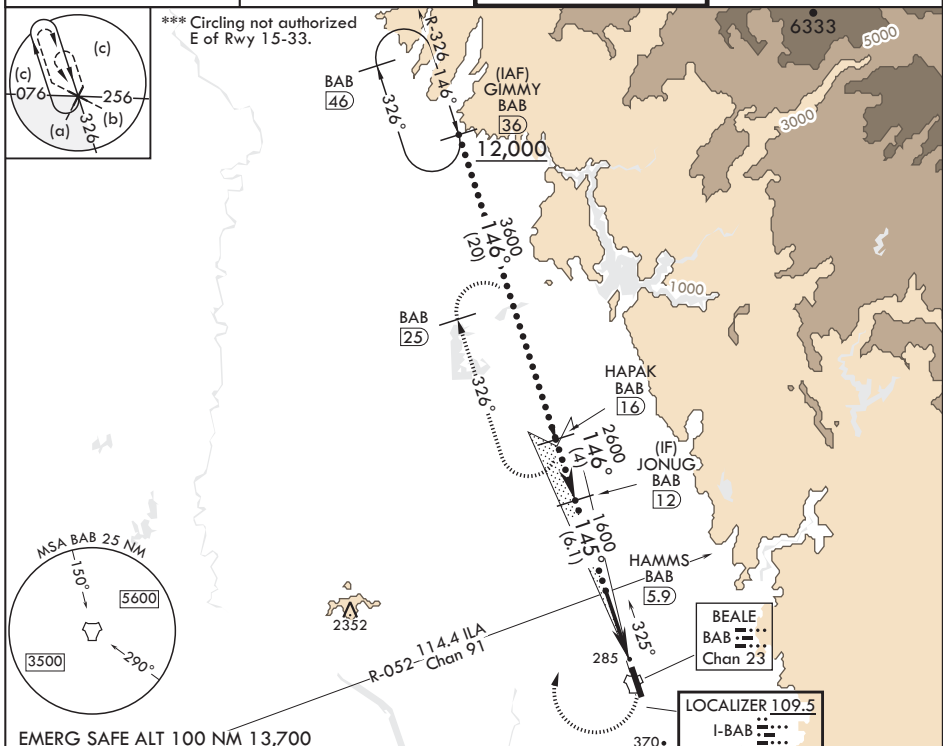
RADAR or DME required

ALSF-1

MISSED APPROACH: Climb to to 700 on heading 145°, then climbing right turn to 4400 heading 011° to intercept BAB R-326 to HAPAK and hold, continue climb in hold to 4400.

▼ * When ALS inop, increase CAT CDE RVR to 40 and vis to 3/4 mile.
** When ALS inop, increase CAT CDE vis to 1 3/8 miles.

ATIS★ 124.55 273.5	NORCAL APP CON 125.4 259.1	TOWER★ 119.4 284.75	GND CON 121.6 257.75
------------------------------	--------------------------------------	-------------------------------	--------------------------------



CATEGORY	C	D	E
S-ILS 15*	313/24	200	(200-1/2)
S-LOC 15**	600/50	487	(500-1)
☐ CIRCLING***	600-1½ 487 (500-1½)	800-2¼ 687 (700-2¼)	800-2½ 687 (700-2½)

MARYSVILLE, CALIFORNIA

39°08'N - 121°26'W

BEALE AFB (KBAB)

Amdt 6 25JAN24

HI-ILS or LOC Z RWY 15

SW-2, 22 FEB 2024 to 21 MAR 2024

SW-2, 22 FEB 2024 to 21 MAR 2024

HI-ILS or LOC Z RWY 33

LOC I-MIZ 109.5	APCH CRS 325°	Rwy ldg 12,001	TDZE 105	Arprt Elev 113
---------------------------	-------------------------	-------------------	-------------	-------------------

-(USAF)

BEALE AFB (KBAB)

RADAR or DME required.

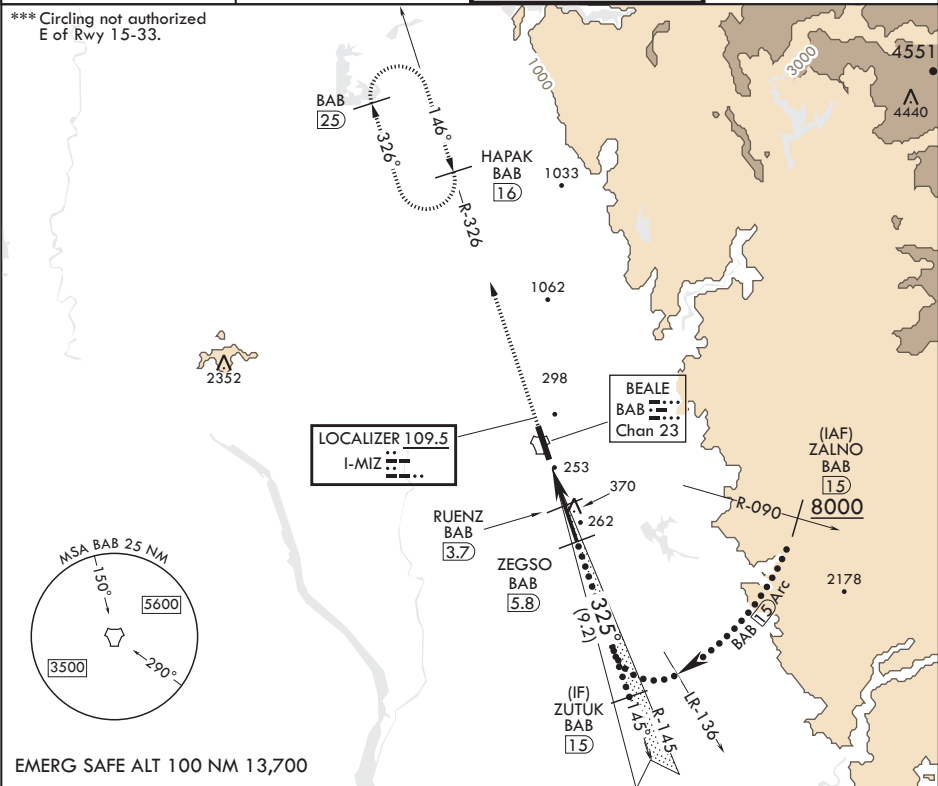


MISSED APPROACH: Climb to 3600 intercept BAB R-326 to HAPAK and hold.

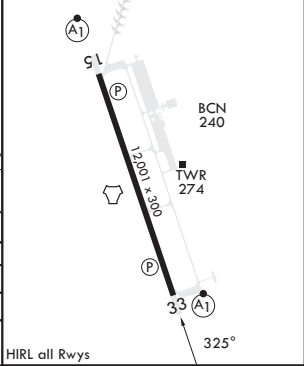
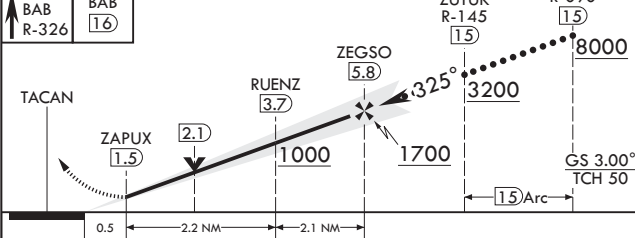
* When ALS inop, increase CAT CDE RVR to 40 and vis to 3/4 mile.
 ** When ALS inop, increase CAT CDE RVR to 60 vis to 1 1/8 miles.

ATIS* 124.55 273.5	NORCAL APP CON 125.4 259.1	TOWER* 119.4 284.75	GND CON 121.6 257.75
------------------------------	--------------------------------------	-------------------------------	--------------------------------

*** Circling not authorized E of Rwy 15-33.



3600 BAB R-326	HAPAK BAB 16	ZUTUK R-145 15	ZALNO R-090 15	ELEV 113	TDZE 105
----------------------	--------------------	----------------------	----------------------	----------	----------



CATEGORY	C	D	E
S-ILS 33*	305/24	200	(200-1/2)
S-LOC 33**	520/40	415	(500-3/4)
C CIRCLING***	600-1 1/2 487 (500-1 1/2)	800-2 1/4 687 (700-2 1/4)	800-2 1/2 687 (700-2 1/2)

HI-ILS or LOC Z RWY 33

SW-2, 22 FEB 2024 to 21 MAR 2024

SW-2, 22 FEB 2024 to 21 MAR 2024

MARYSVILLE, CALIFORNIA

HI-TACAN Z RWY 15

TACAN BAB Chan 23	APCH CRS 153°	Rwy ldg TDZE 12,001 113	Arprt Elev 113
-------------------	---------------	-------------------------	----------------

-(USAF)

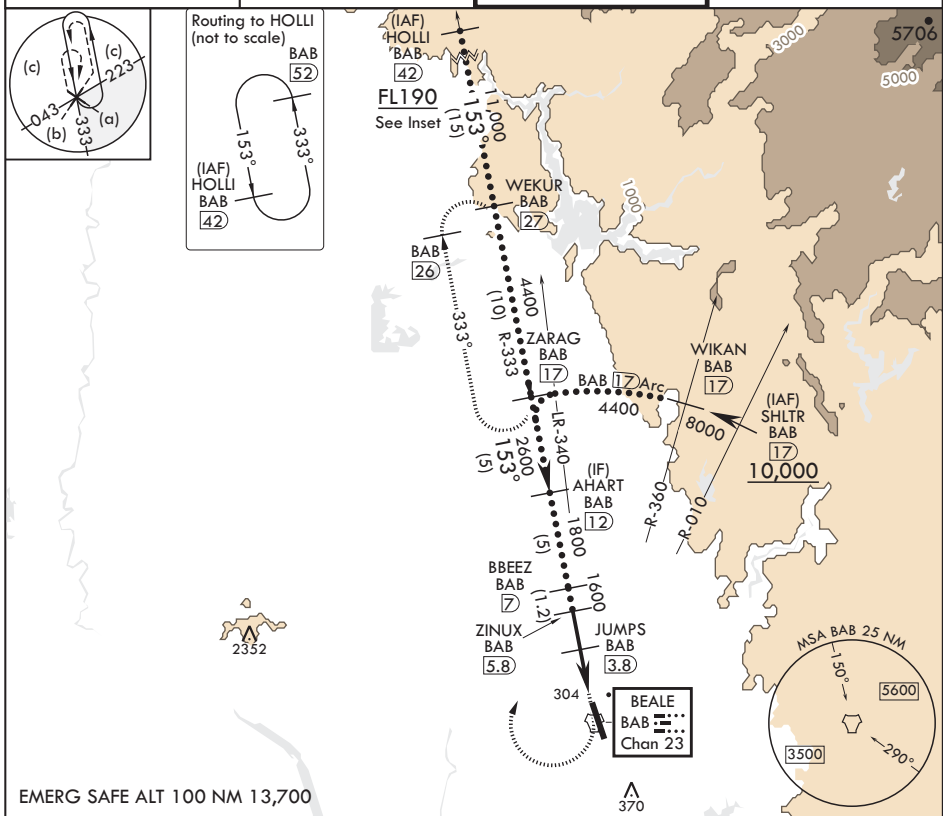
BEALE AFB (KBAB)

▼ *When ALS inop, increase vis to 1 3/8 miles.
 **Circling not authorized E of Rwy 15-33.

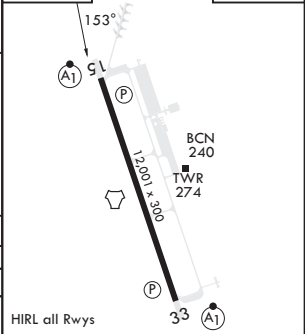
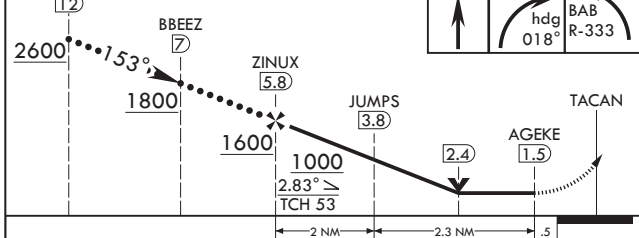


MISSED APPROACH: Climb to 700 on heading 153°, then climbing right turn to 4700 heading 018° to intercept BAB R-333 and hold, continue climb in hold to 4700.

ATIS* 124.55 273.5	NORCAL APP CON 125.4 259.1	TOWER* 119.4 284.75	GND CON 121.6 257.75
--------------------	----------------------------	---------------------	----------------------



EMERG SAFE ALT 100 NM 13,700



CATEGORY	C	D	E
S-15*	560/45	447	(500-7/8)
CIRCLING**	600-1½ 487 (500-1½)	800-2¼ 687 (700-2¼)	800-2½ 687 (700-2½)

MARYSVILLE, CALIFORNIA

39°08'N - 121°26'W

BEALE AFB (KBAB)

Amdt 6 25JAN24

HI-TACAN Z RWY 15

SW-2, 22 FEB 2024 to 21 MAR 2024

SW-2, 22 FEB 2024 to 21 MAR 2024

HI-TACAN Z RWY 33

TACAN BAB Chan 23	APCH CRS 317°	Rwy ldg 12,001	TDZE 105
		Arprt Elev 113	

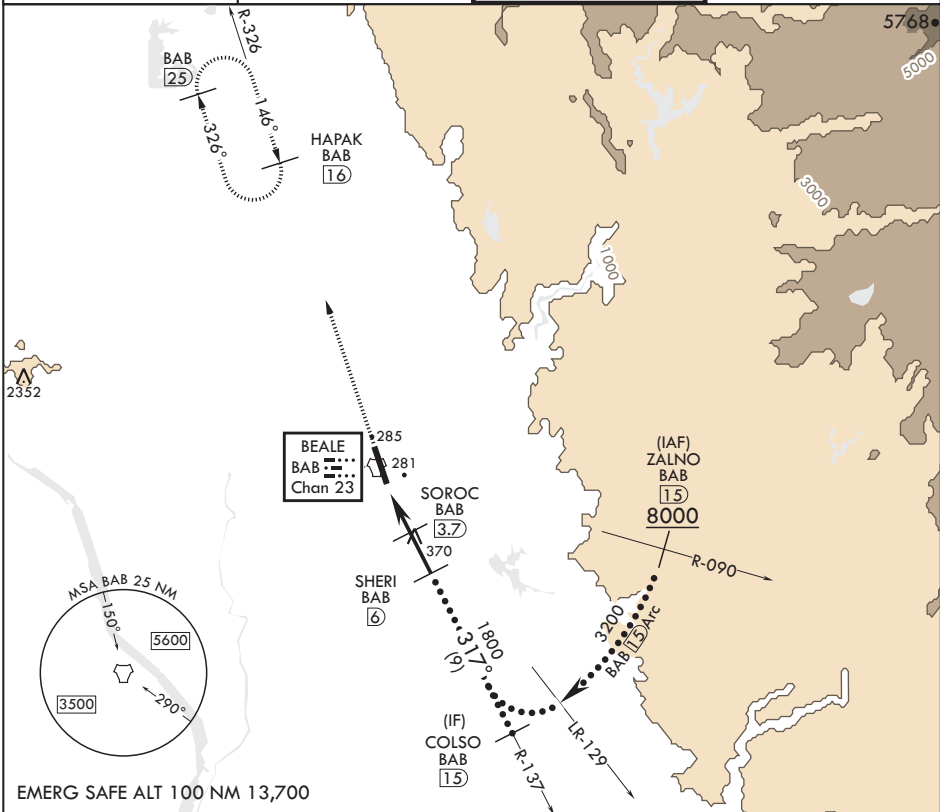
(USAF)

BEALE AFB (KBAB)

⚠ * When ALS inop, increase CAT CDE vis to 1 1/4 miles.
 ** Circling not authorized NE of Rwy 15-33.

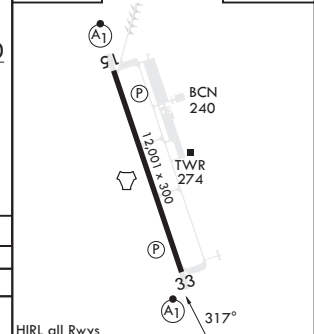
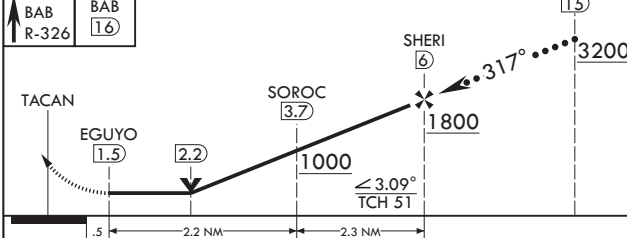
ALSF-1
 MISSED APPROACH: Climb to 3600, intercept BAB TACAN R-326 to HAPAK and hold.

ATIS* 124.55 273.5	NORCAL APP CON 125.4 259.1	TOWER* 119.4 284.75	GND CON 121.6 257.75
-----------------------	-------------------------------	------------------------	-------------------------



EMERG SAFE ALT 100 NM 13,700

3600 ↑ BAB R-326	HAPAK BAB 16	COLSO 15	ELEV 113	TDZE 105
---------------------------	--------------------	-------------	----------	----------



CATEGORY	C	D	E
S-33*	540/40	435	(500-¾)
ⓐ CIRCLING**	600-1½ 487 (500-1½)	800-2¼ 687 (700-2¼)	800-2½ 687 (700-2½)

HIRL all Rwys

HI-TACAN Z RWY 33

SW-2, 22 FEB 2024 to 21 MAR 2024

SW-2, 22 FEB 2024 to 21 MAR 2024

MARYSVILLE, CALIFORNIA

ILS or LOC Y RWY 15

LOC I-BAB 109.5	APCH CRS 145°	Rwy ldg TDZE Arpt Elev	12,001 113 113
---------------------------	-------------------------	------------------------------	---

-(USAF)

BEALE AFB (KBAB)

RADAR or DME required.

- * When ALS inop, increase RVR to 40 and vis to 3/4 mile.
- ** When ALS inop, increase CAT AB RVR to 55 and vis to 1 mile, CAT CDE vis to 1 3/8 miles.

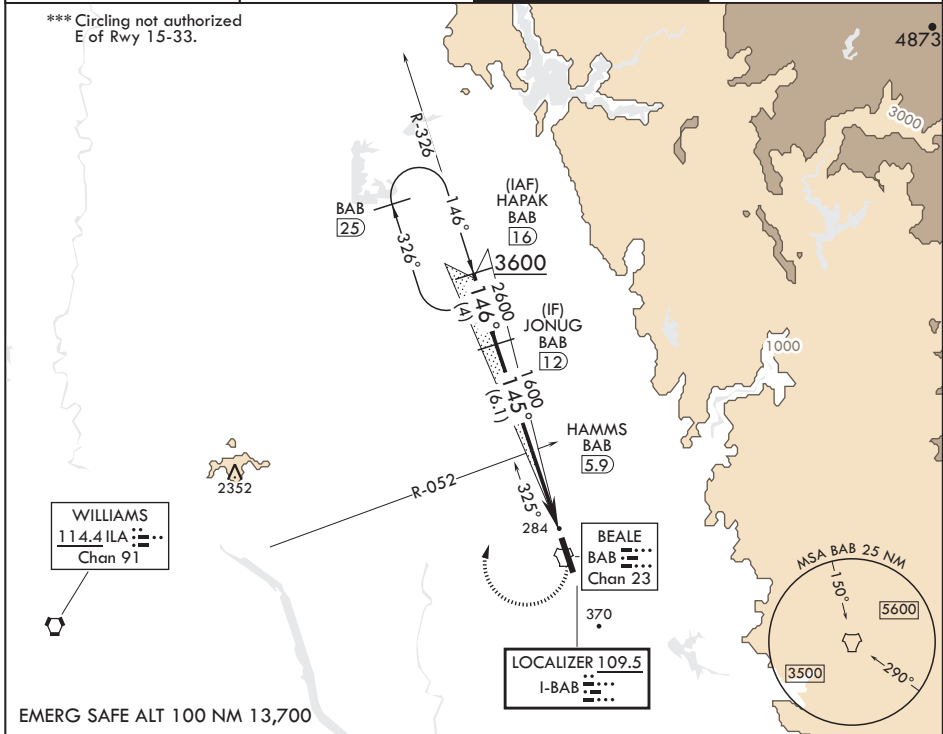
ALS-F-1



MISSED APPROACH: Climb to 700 on heading 145°, then climbing right turn to 4400 heading 011° to intercept BAB R-326 to HAPAK and hold, continue climb-in-hold to 4400.

ATIS* 124.55 273.5	NORCAL APP CON 125.4 259.1	TOWER* 119.4 284.75	GND CON 121.6 257.75
------------------------------	--------------------------------------	-------------------------------	--------------------------------

*** Circling not authorized E of Rwy 15-33.



EMERG SAFE ALT 100 NM 13,700

JONUG (12)	VGSi and ILS glidepath not coincident (VGSi Angle 2.75/TCH 53).		700	4400	BAB R-326	ELEV 113	TDZE 113
2600	HAMMS (5.9) ILA R-052		↑		hdg 011°	145°	
1600	TACAN		4.4 NM		0.5	1200-300	
GS 2.75° TCH 47	HEGOP (1.5)					BCN 240	
CATEGORY	A	B	C	D	E	TWR 274	
S-ILS 15*	313/24		200	(200-1/2)			
S-LOC 15**	600/24	487 (500-1/2)	600/50	487	(500-1)		
CIRCLING***	600-1	487 (500-1)	600-1 1/2 487 (500-1 1/2)	800-2 1/4 687 (700-2 1/4)	800-2 1/2 687 (700-2 1/2)		

HIRL all Rwys

MARYSVILLE, CALIFORNIA

39°08'N - 121°26'W

BEALE AFB (KBAB)

Amdt 6 25JAN24

ILS or LOC Y RWY 15

SW-2, 22 FEB 2024 to 21 MAR 2024

SW-2, 22 FEB 2024 to 21 MAR 2024

LOC I-MIZ 109.5	APCH CRS 325°	Rwy ldg TDZE 12,001 Arprt Elev 113
---------------------------	-------------------------	---

-(USAF)

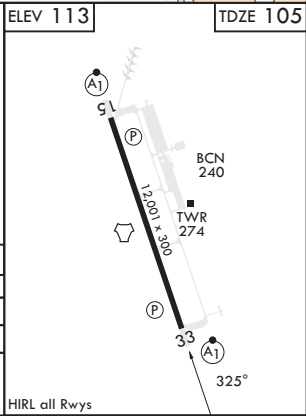
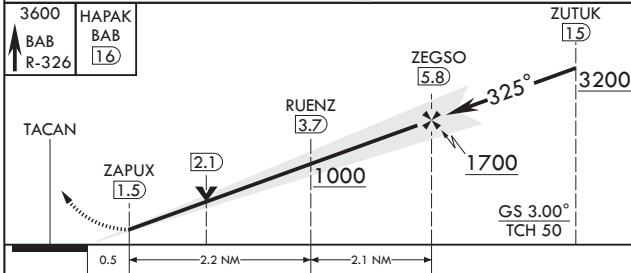
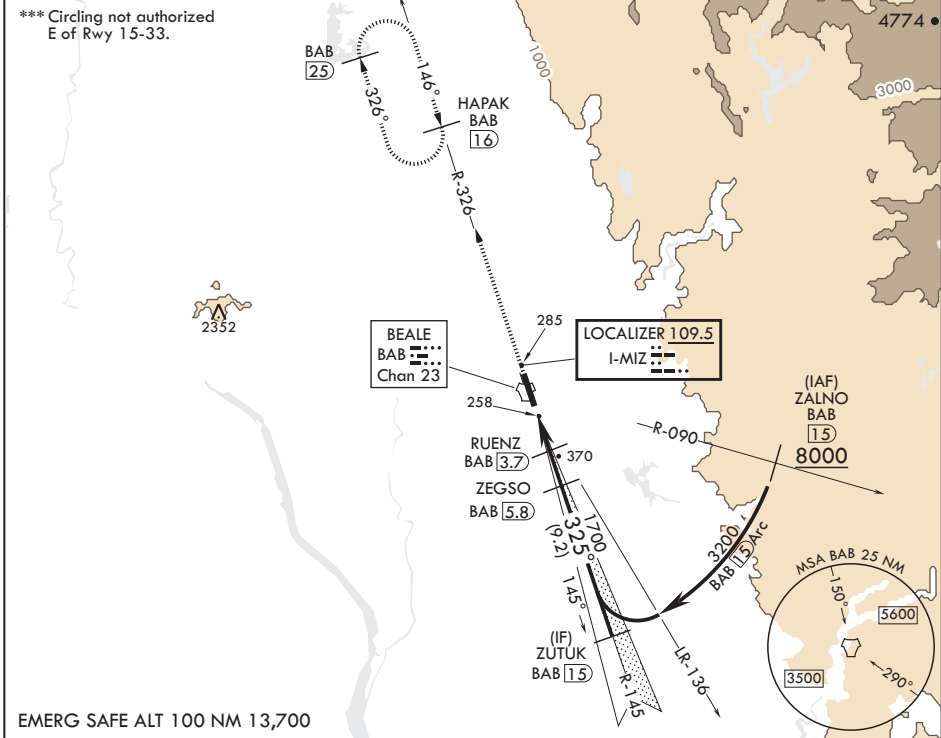
BEALE AFB (KBAB)

RADAR or DME required.

▼ * When ALS inop, increase RVR to 40 and vis to 3/4 mile.
** When ALS inop, increase CAT AB RVR to 55 and vis to 1 mile;
CAT CDE RVR to 60 and vis to 1 1/8 miles.

ALSF-1 MISSED APPROACH: Climb to 3600 intercept
BAB TACAN R-326 to HAPAK and hold.

ATIS★ 124.55 273.5	NORCAL APP CON 125.4 259.1	TOWER★ 119.4 284.75	GND CON 121.6 257.75
------------------------------	--------------------------------------	-------------------------------	--------------------------------



CATEGORY	A	B	C	D	E
S-ILS 33*	305/24		200	(200-½)	
S-LOC 33**	520/24	415 (500-½)	520/40	415	(500-¾)
☐ CIRCLING***	600-1	487 (500-1)	600-1½ 487 (500-1½)	800-2¼ 687 (700-2¼)	800-2½ 687 (700-2½)

SW-2, 22 FEB 2024 to 21 MAR 2024

SW-2, 22 FEB 2024 to 21 MAR 2024

MARYSVILLE, CALIFORNIA

RNAV (GPS) RWY 15

APCH CRS	Rwy Idg	12,001
145°	THRE	113
	Arprt Elev	113

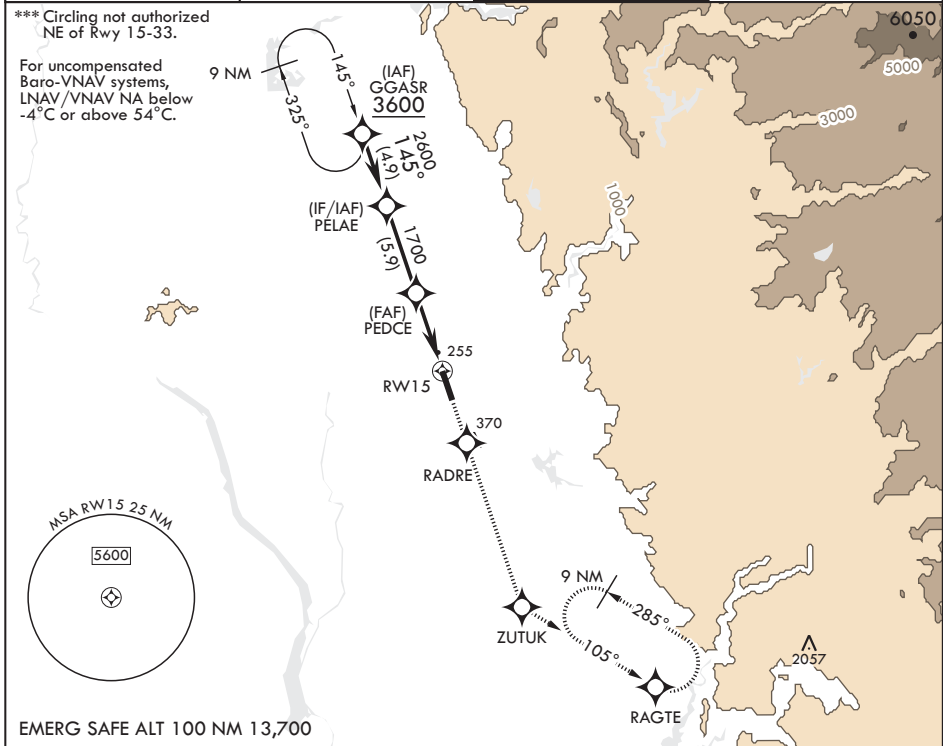
-(USAF)

BEALE AFB (KBAB)

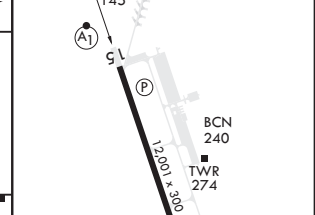
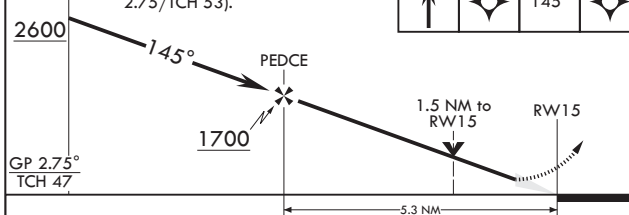
RNP APCH
▲ * When ALS inop, increase RVR to 60, vis to 1 1/8 miles.
 ** When ALS inop, increase CAT AB RVR to 55 and vis to 1 mile;
 CAT CDE vis to 1 3/8 miles.

ALSF-1
▲ MISSED APPROACH: Climb to 3600 direct RADRE, track 145° to ZUTUK, track 105° to RAGTE and hold, continue climb-in-hold to 3600.

ATIS★	NORCAL APP CON	TOWER★	GND CON
124.55 273.5	125.4 259.1	119.4 284.75	121.6 257.75



EMERG SAFE ALT 100 NM 13,700



CATEGORY	A	B	C	D	E
RNAV/VNAV DA*	530/40		417		(500-3/4)
RNAV MDA**	600/24 487 (500-1/2)		600/50		487 (500-1)
C CIRCLING***	600-1 487 (500-1)		600-1 1/2 487 (500-1 1/2)		800-2 1/4 687 (700-2 1/4) 800-2 1/2 687 (700-2 1/2)

HIRL all Rwys

MARYSVILLE, CALIFORNIA
 Amdt 2 25JAN24

39°08'N - 121°26'W

BEALE AFB (KBAB)

RNAV (GPS) RWY 15

SW-2, 22 FEB 2024 to 21 MAR 2024

SW-2, 22 FEB 2024 to 21 MAR 2024

MARYSVILLE, CALIFORNIA

RNAV (GPS) RWY 33

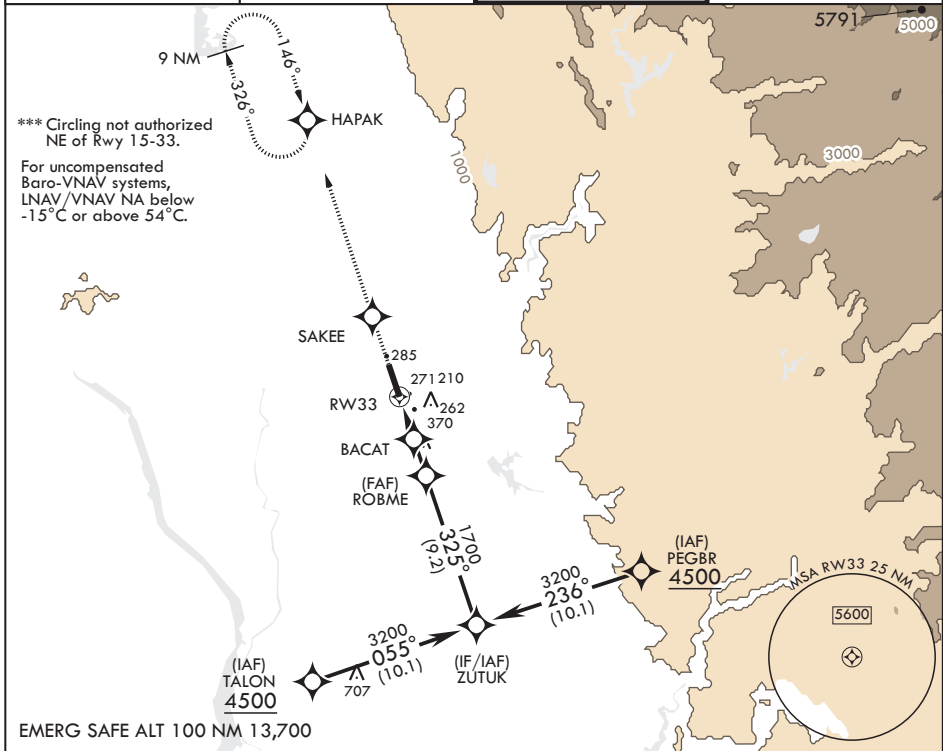
APCH CRS 325°	Rwy Idg THRE Arprt Elev 12,001 105 113
-------------------------	--

(USAF)

BEALE AFB (KBAB)

RNP APCH	ALSF-1	MISSED APPROACH: Climb to 3600 direct SAKEE, track 326° to HAPAK and hold.
<p>▼ * When ALS inop, increase vis to 1 1/4 miles. ** When ALS inop, increase CAT AB RVR to 55 and vis to 1 mile, CAT CDE vis to 1 1/4 miles.</p>		

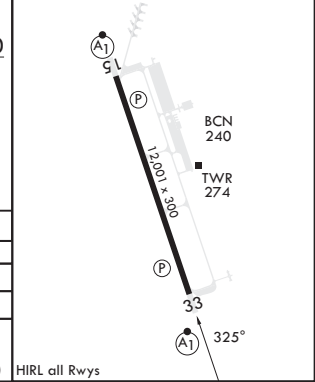
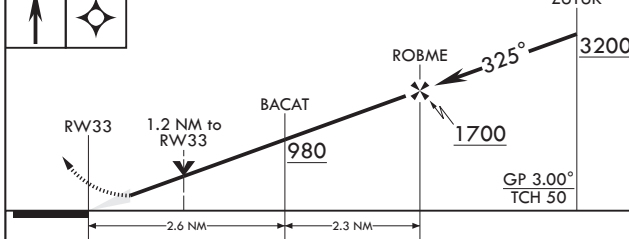
ATIS★ 124.55 273.5	NORCAL APP CON 125.4 259.1	TOWER★ 119.4 284.75	GND CON 121.6 257.75
------------------------------	--------------------------------------	-------------------------------	--------------------------------



SW-2, 22 FEB 2024 to 21 MAR 2024

SW-2, 22 FEB 2024 to 21 MAR 2024

3600 SAKEE	ELEV 113	THRE 105
------------	----------	----------



CATEGORY	A	B	C	D	E
LNAV/VNAV DA*	540/40		435	(500-3/4)	
LNAV MDA**	540/24	435 (500-1/2)	540/40	435	(500-3/4)
CIRCLING***	600-1	487 (500-1)	600-1 1/2 487 (500-1 1/2)	800-2 1/4 687 (700-2 1/4)	800-2 1/2 687 (700-2 1/2)

HIRL all Rwys

MARYSVILLE, CALIFORNIA

39°08'N - 121°26'W

BEALE AFB (KBAB)

Amdt 2 22FEB24

RNAV (GPS) RWY 33

MARYSVILLE, CALIFORNIA

TACAN Y RWY 15

TACAN BAB Chan 23	APCH CRS 153°	Rwy ldg TDZE Arprt Elev	12,001 113 113
----------------------	------------------	-------------------------------	----------------------

-(USAF)

BEALE AFB (KBAB)

ALSF-1 MISSED APPROACH: Climb to 700 on heading 153°, then climbing right turn to 4700 heading 018° to intercept BAB R-333 to ZARAG and hold, continue climb-in-hold to 4700.

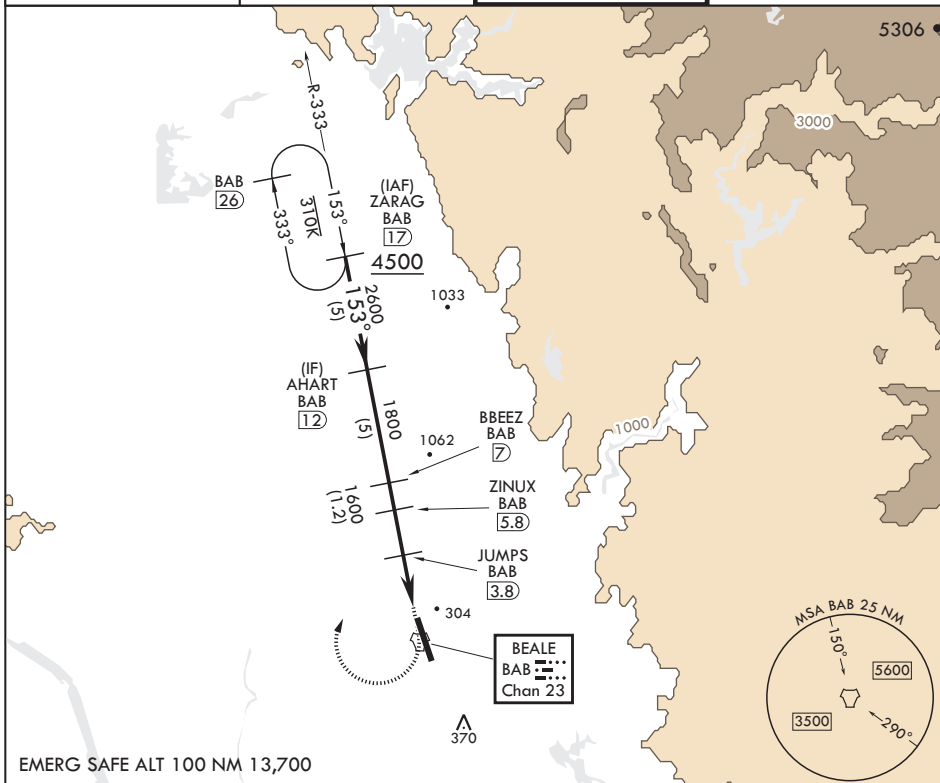
ATIS* 124.55 273.5

NORCAL APP CON 125.4 259.1

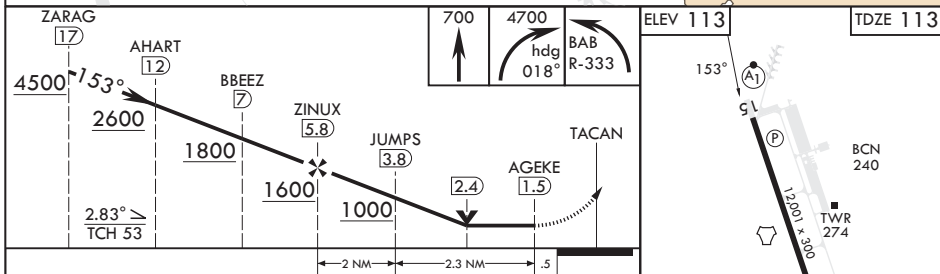
TOWER* 119.4 284.75

GND CON 121.6 257.75

ATIS*	NORCAL APP CON	TOWER*	GND CON
124.55 273.5	125.4 259.1	119.4 284.75	121.6 257.75



EMERG SAFE ALT 100 NM 13,700



CATEGORY	A	B	C	D	E
S-15*	560/24 447 (500-½)	560/45 447 (500-¾)	560/45 447 (500-¾)	560/45 447 (500-¾)	560/45 447 (500-¾)
C CIRCLING**	600-1 487 (500-1)	600-1½ 487 (500-1½)	800-2¼ 687 (700-2¼)	800-2¼ 687 (700-2¼)	800-2½ 687 (700-2½)

MARYSVILLE, CALIFORNIA

39°08'N - 121°26'W

BEALE AFB (KBAB)

Amdt 6 22FEB24

TACAN Y RWY 15

SW-2, 22 FEB 2024 to 21 MAR 2024

SW-2, 22 FEB 2024 to 21 MAR 2024

TACAN Y RWY 33

TACAN BAB Chan 23	APCH CRS 317°	Rwy ldg 12,001
		TDZE 105
		Arprt Elev 113

-(USAF)

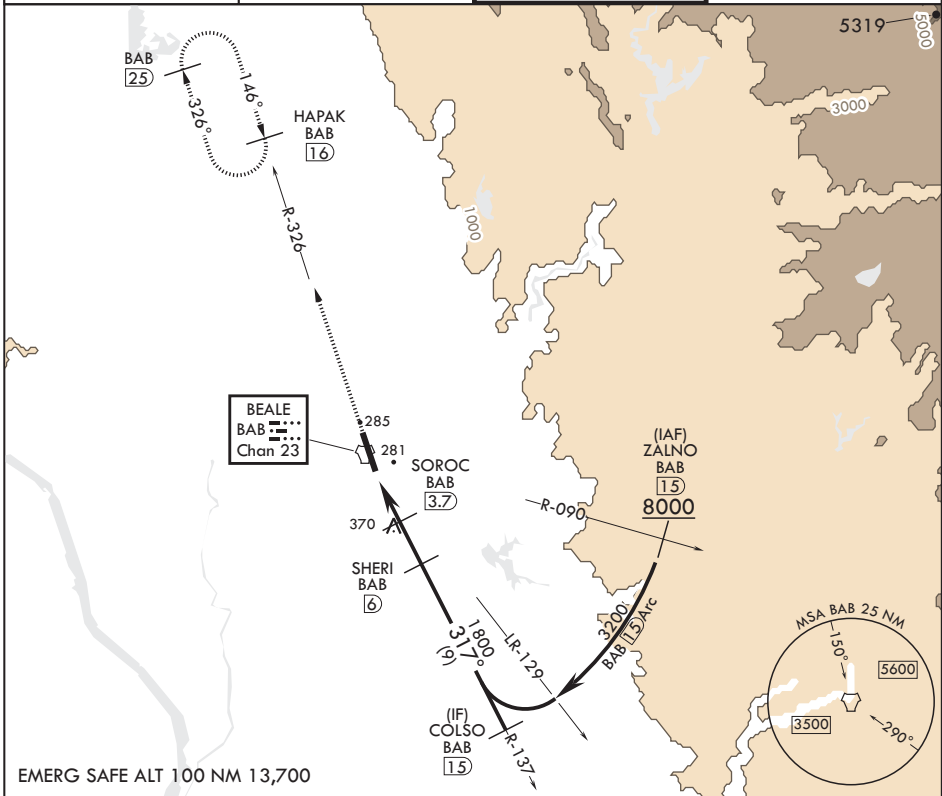
BEALE AFB (KBAB)

⚠ *When ALS inop, increase CAT AB RVR to 55 and vis to 1 mile, CAT CDE vis to 1 1/4 miles.
 **Circling not authorized E of Rwy 15-33.



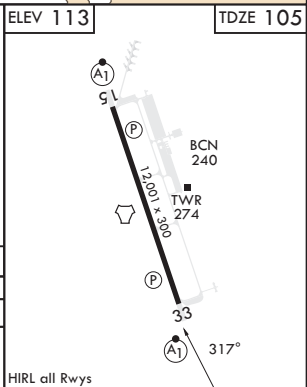
MISSED APPROACH: Climb to 3600 intercept BAB TACAN R-326 to HAPAK and hold.

ATIS* 124.55 273.5	NORCAL APP CON 125.4 259.1	TOWER* 119.4 284.75	GND CON 121.6 257.75
-----------------------	-------------------------------	------------------------	-------------------------



EMERG SAFE ALT 100 NM 13,700

3600 ↑ BAB R-326	HAPAK BAB 16	COLSO 15	ELEV 113	TDZE 105	
TACAN	EGUYO 1.5	SOROC 3.7	SHERI 6	3200	
	2.2	1000	1800	317°	
	.5	2.2 NM	2.3 NM	≤ 3.09° TCH 51	
CATEGORY	A	B	C	D	E
S-33*	540/24	435 (500-½)	540/40	435	(500-¾)
C CIRCLING**	600-1	487 (500-1)	600-1½ 487 (500-1½)	800-2¼ 687 (700-2¼)	800-2½ 687 (700-2½)



HIRL all Rwys

TACAN Y RWY 33

SW-2, 22 FEB 2024 to 21 MAR 2024

SW-2, 22 FEB 2024 to 21 MAR 2024