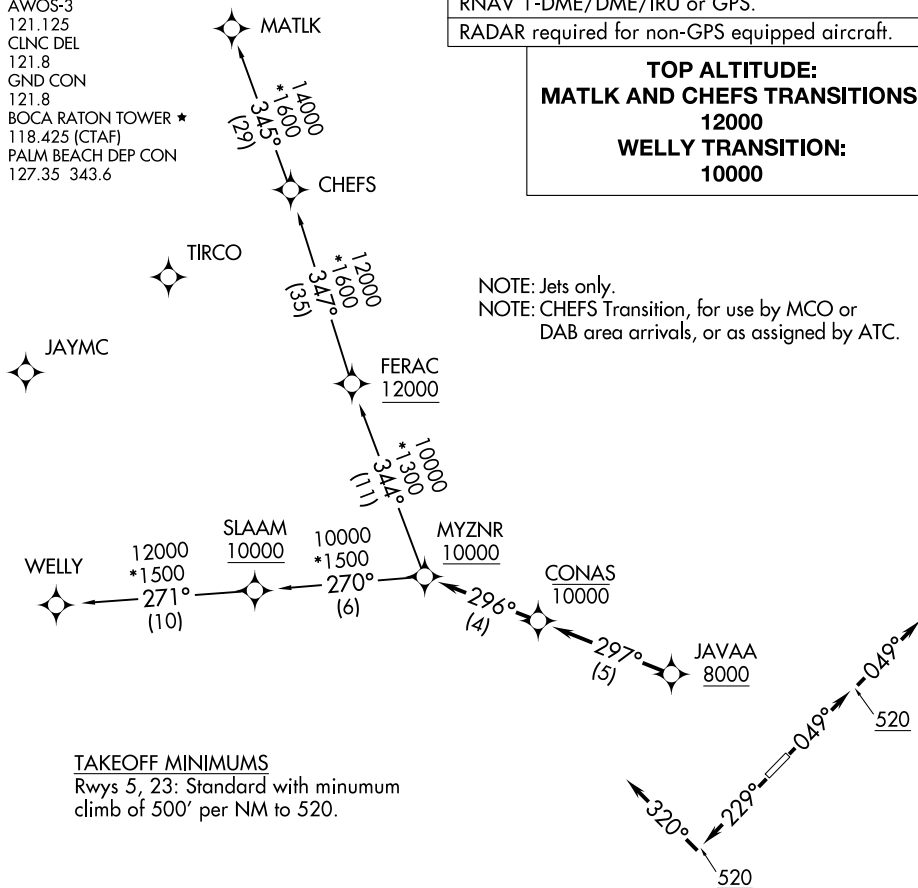


BOCA RATON (BCT)  
BOCA RATON, FLORIDA

## MYZNR TWO DEPARTURE (RNAV)

RADAR required for non-GPS equipped aircraft.

**TOP ALTITUDE:**  
**MATLK AND CHEFS TRANSITIONS:**  
12000  
**WELLY TRANSITION:**  
10000



NOTE: Chart not to scale.

## DEPARTURE ROUTE DESCRIPTION

**TAKEOFF RUNWAY 5:** Climb on heading 049° to 520, then on heading 049° or as assigned by ATC, for vectors to cross JAVAA at or above 8000, thence. . .

**TAKEOFF RUNWAY 23:** Climb on heading 229° to 520, then on heading 320° or as assigned by ATC, for vectors to cross JAVAA at or above 8000, thence. . .

...on track 297° to cross CONAS at or below 10000, then on track 296° to cross MYZNR at or above 10000. Maintain ATC assigned altitude, expect clearance to filed altitude within 10 minutes after departure.

CHEFS TRANSITION (MYZNR2.CHEFS)

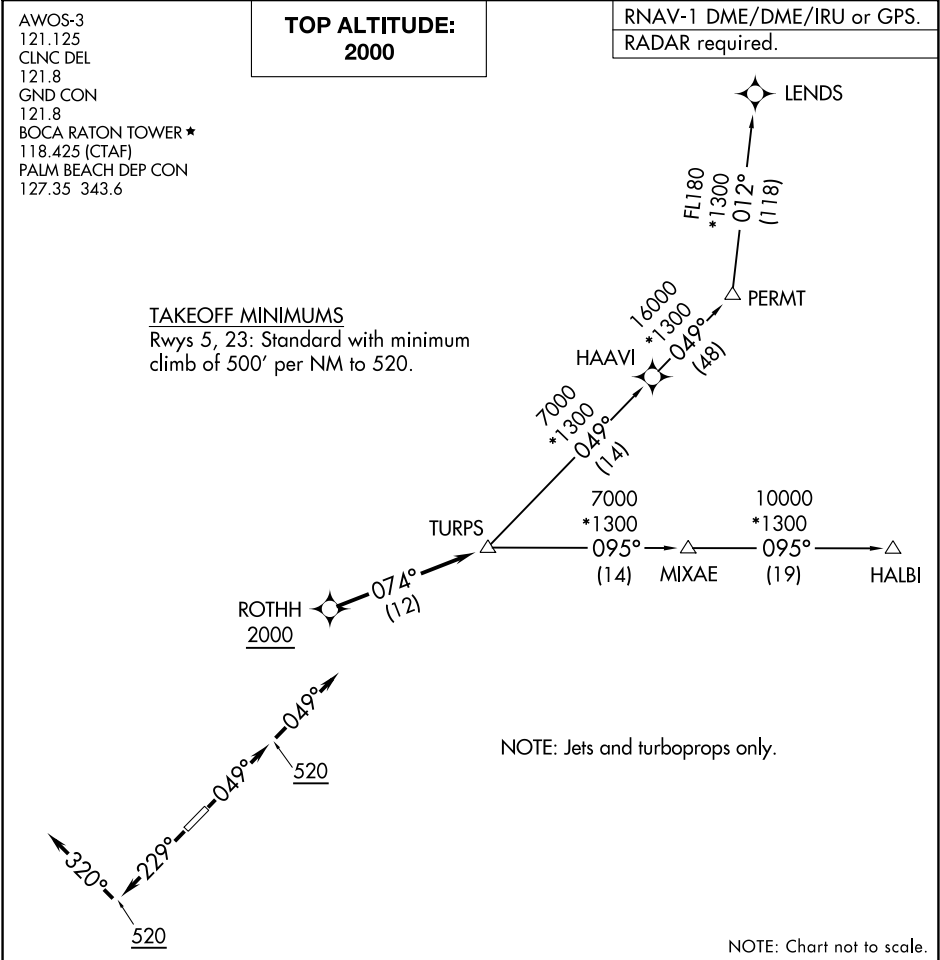
MATLK TRANSITION (MYZNR2.MATLK)

WELLY TRANSITION (MYZNR2.WELLY)

MYZNR TWO DEPARTURE (RNAV)  
(MYZNR2.MYZNR) 19MAY22

BOCA RATON, FLORIDA  
BOCA RATON (BCT)

SE-3, 22 FEB 2024 to 21 MAR 2024



▼

DEPARTURE ROUTE DESCRIPTION

TAKEOFF RUNWAY 5: Climb on heading 049° to 520, then on heading 049°, or as assigned by ATC, for vectors to cross ROTHH at or above 2000, thence. . . .

TAKEOFF RUNWAY 23: Climb on heading 229° to 520, then on heading 320°, or as assigned by ATC, for vectors to cross ROTHH at or above 2000, thence. . . .

. . . .on track 074° to TURPS, maintain 2000, then on assigned transition, expect clearance to filed altitude within 10 minutes after departure.

HALBI TRANSITION (TURPS2.HALBI)

LEND'S TRANSITION (TURPS2.LEND'S)

PERMT TRANSITION (TURPS2.PERMT)