

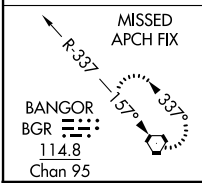
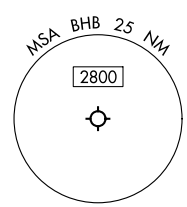
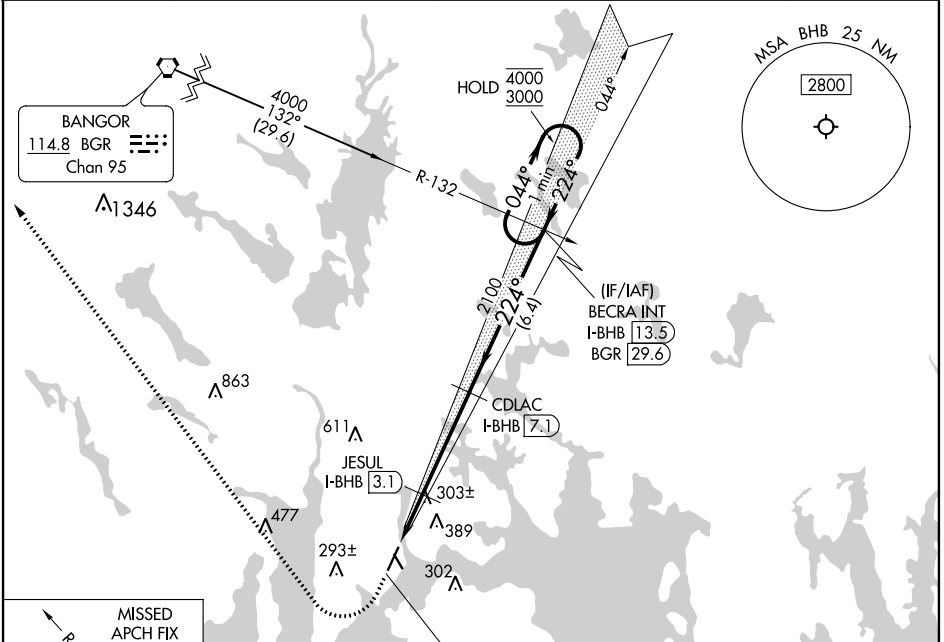
LOC/DME I-BHB 108.3 Chan 20	APP CRS 224°	Rwy Idg TDZE Apt Elev 5200 83 83
---	------------------------	--

ILS or LOC RWY 22

HANCOCK COUNTY-BAR HARBOR (BHB)

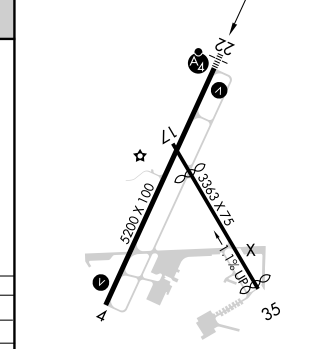
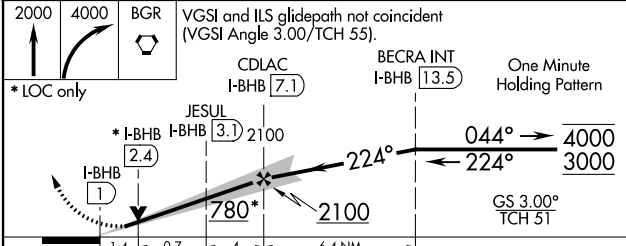
DME required.	MALSF	MISSED APPROACH: Climb to 2000 then climbing right turn to 4000 direct BGR VORTAC and hold.
<p>▽ Circling Rwy 17, 35 NA at night. △ For inop ALS, increase S-LOC Cat C visibility to 1 3/8 SM.</p>		

AWOS-3PT 118.35	BANGOR APP CON 133.6 284.65	CLNC DEL 119.9	UNICOM 123.0 (CTAF)	122.7 0
---------------------------	---------------------------------------	--------------------------	-------------------------------	-----------------------



LOCALIZER 108.3
I-BHB
Chan 20

ELEV 83	D TDZE 83
REIL Rwy 4 0	224° 6.1 NM from FAF
HIRL Rwy 4-22 0	



CATEGORY	A	B	C	D
S-ILS 22		283-3/4	200 (200-3/4)	
S-LOC 22	580-3/4 497 (500-3/4)		580-1 1/4 497 (500-1 1/4)	580-1 1/2 497 (500-1 1/2)
CIRCLING	600-1 517 (600-1)	620-1 537 (600-1)	700-1 3/4 617 (700-1 3/4)	700-2 617 (700-2)

FAF to MAP 6.1 NM					
Knots	60	90	120	150	180
Min:Sec	6:06	4:04	3:03	2:26	2:02

NE-1, 20 MAY 2021 to 17 JUN 2021

NE-1, 20 MAY 2021 to 17 JUN 2021

WAAS CH 86305 W22A	APP CRS 224°	Rwy Idg TDZE Apt Elev	5200 83 83
--	------------------------	-----------------------------	---------------------------------------

RNAV (GPS) RWY 22

HANCOCK COUNTY-BAR HARBOR (BHB)

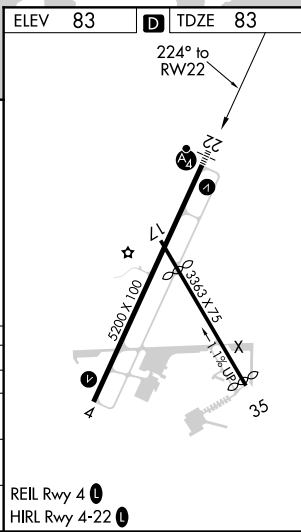
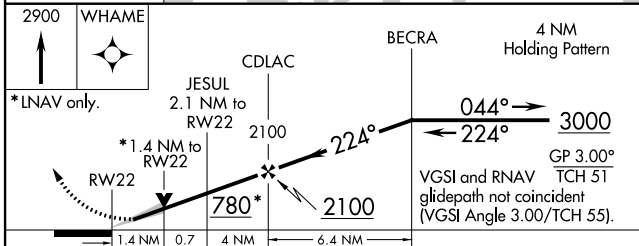
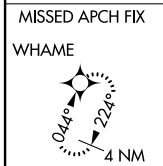
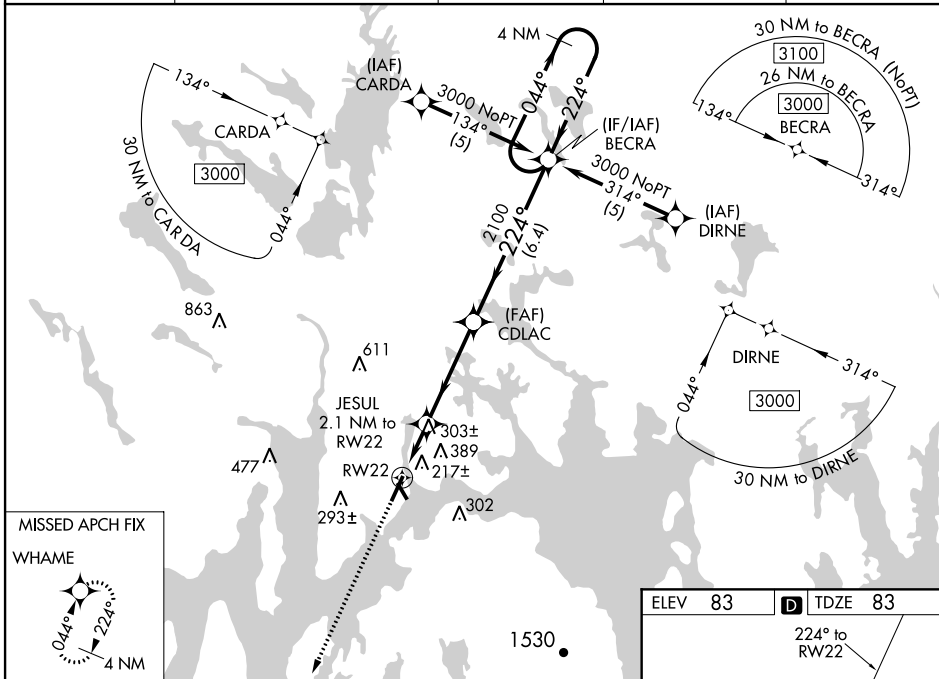
⚠ Baro-VNAV NA when using Bangor altimeter setting. DME/DME RNP-0.3 NA. When local altimeter setting not received, use Bangor altimeter setting and increase all DA 83 feet and all MDA 100 feet; increase LPV all Cats and LNAV/VNAV all Cats and LNAV Cats C/D and Circling Cats C/D visibilities ½ mile. VDP NA with Bangor altimeter setting. Inoperative table does not apply to LNAV/VNAV all Cats and LNAV Cat C. When using Bangor altimeter setting, inoperative table does not apply to LNAV/VNAV all Cats and LNAV Cat C. For uncompensated Baro-VNAV systems, LNAV/VNAV NA below -15°C (5°F) or above 49°C (120°F). Circling to Rwy 17 NA at night.

MALSF



MISSED APPROACH:
Climb to 2900 direct
WHAME and hold.

AWOS-3PT 118.35	BANGOR APP CON 133.6 284.65	CLNC DEL 119.9	UNICOM 123.0 (CTAF)	122.70
---------------------------	---------------------------------------	--------------------------	-------------------------------	---------------



CATEGORY	A	B	C	D
LPV DA		283-¾	200 (200-¾)	
LNAV/VNAV DA		697-2¼	614 (700-2¼)	
LNAV MDA	580-¾ 497 (500-¾)		580-1¼ 497 (500-1¼)	580-1½ 497 (500-1½)
CIRCLING	600-1 517 (600-1)	620-1 537 (600-1)	700-1¾ 617 (700-1¾)	700-2 617 (700-2)

NE-1, 20 MAY 2021 to 17 JUN 2021

NE-1, 20 MAY 2021 to 17 JUN 2021

WAAS CH 65900 W04A	APP CRS 044°	Rwy Idg TDZE Apt Elev	5200 83 83
--	------------------------	-----------------------------	---------------------------------------

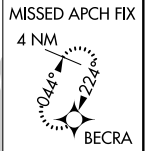
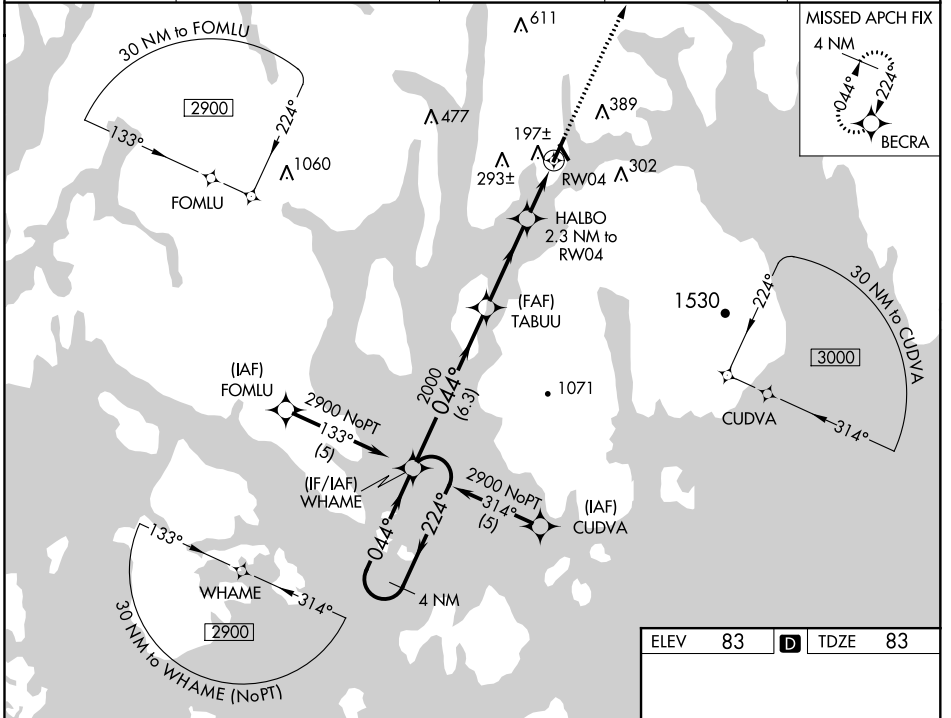
RNAV (GPS) RWY 4

HANCOCK COUNTY-BAR HARBOR (BHB)

⚠ Baro-VNAV NA when using Bangor altimeter setting. For uncompensated Baro-VNAV systems, LNAV/VNAV NA below -15°C (5°F) or above 49°C (120°F). DME/DME RNP-0.3 NA. When local altimeter setting not received, use Bangor altimeter setting and increase all DA 83 feet and all MDA 100 feet; increase LPV all Cats visibility ¼ mile; increase LNAV/VNAV all Cats ½ mile; increase LNAV Cats C/D and Circling Cats C/D visibilities ¼ mile. Night Landing: Rwy 17 NA, Rwy 4 Cat C/D NA at night. Helicopter visibility reduction below 1 SM not authorized.

MISSED APPROACH:
Climb to 3000 direct BECRA and hold.

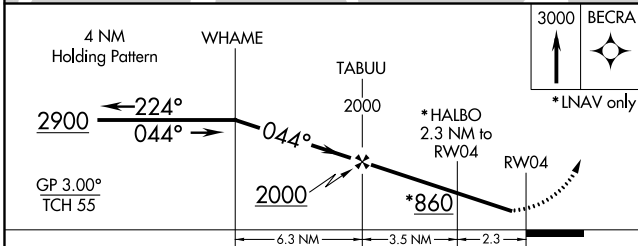
AWOS-3PT 118.35	BANGOR APP CON 133.6 284.65	CLNC DEL 119.9	UNICOM 123.0 (CTAF)	122.7
---------------------------	---------------------------------------	--------------------------	-------------------------------	--------------



NE-1, 20 MAY 2021 to 17 JUN 2021

NE-1, 20 MAY 2021 to 17 JUN 2021

ELEV 83	D TDZE 83
---------	------------------



CATEGORY	A	B	C	D
LPV DA		333-1	250 (300-1)	
LNAV/VNAV DA		464-1¼	381 (400-1¼)	
LNAV MDA	480-1	397 (400-1)		480-1¼ 397 (400-1¼)
CIRCLING	600-1 517 (600-1)	620-1 537 (600-1)	700-1¾ 617 (700-1¾)	700-2 617 (700-2)

