

(BOI3.BOI) 18312

BOISE THREE DEPARTURE

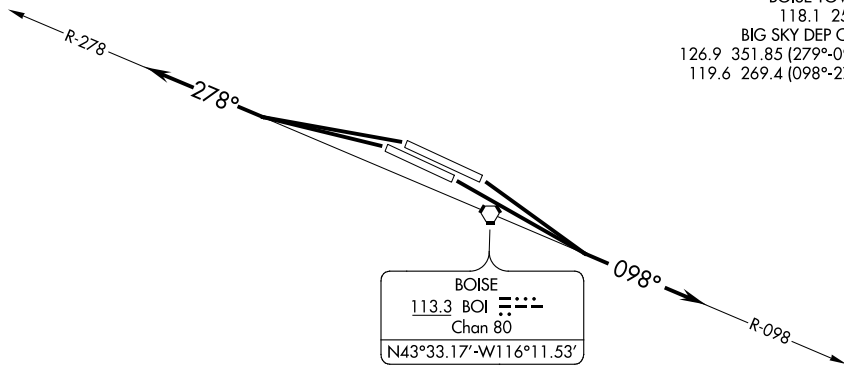
AL-57 (FAA)

BOISE AIR TERMINAL/GOWEN FIELD (BOI)

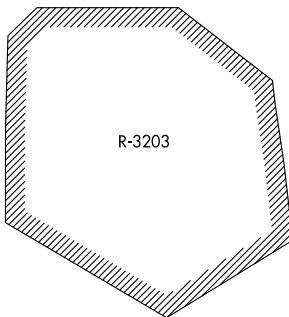
BOISE, IDAHO

**TOP ALTITUDE:
16000**

D-ATIS
 123.9 290.4
 CLNC DEL
 125.9 323.2
 GND CON
 121.7 348.6
 BOISE TOWER
 118.1 257.8
 BIG SKY DEP CON
 126.9 351.85 (279°-097°)
 119.6 269.4 (098°-278°)



BOISE
 113.3 BOI Chan 80
 N43°33.17'-W116°11.53'



NOTE: RADAR required.

TAKEOFF MINIMUMS

Rwys 28L/R: Standard.

Rwys 10L/R: Standard with minimum climb of 240' per NM to 5700.

NOTE: Chart not to scale.



DEPARTURE ROUTE DESCRIPTION

TAKEOFF RUNWAY 10L/R: Climb to 16000 or lower assigned altitude on BOI VORTAC R-098, thence. . . .

TAKEOFF RUNWAY 28L/R: Climb to 16000 or lower assigned altitude on BOI VORTAC R-278, thence. . . .

. . . .Expect RADAR vectors to assigned route, expect filed altitude 10 minutes after departure.

LOST COMMUNICATIONS: If not in contact with Boise Departure Control at 10000 or assigned altitude if lower, continue climb to assigned altitude and thence on assigned route.

BOISE THREE DEPARTURE

(BOI3.BOI) 26MAY16

BOISE, IDAHO

BOISE AIR TERMINAL/GOWEN FIELD (BOI)

NW-1, 13 AUG 2020 to 10 SEP 2020

NW-1, 13 AUG 2020 to 10 SEP 2020