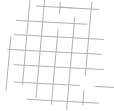


FOUR STACKS VISUAL RWY 15

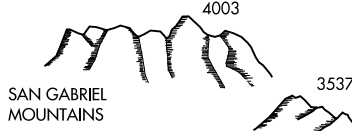
D-ATIS
134.5
SOCAL APP CON
134.2 338.2
BURBANK TOWER
118.7 254.3
GND CON
123.9 348.6
CLNC DEL
118.0 348.6
CPDLC

FILLMORE
112.5 FIM
Chan 72



NEWHALL

5000
Recommended
Altitude
San Fernando
Reservoir



SAN GABRIEL MOUNTAINS



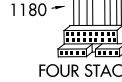
MT. OAT
3756

080°

Turn final approach
for runway 15 at
or above 3000'.

SAN FERNANDO
RESERVOIR

WHITEMAN



FOUR STACKS

VAN NUYS

Vertical Guidance Navaid
and Angle
VASI Rwy 15 (3.25°)

RADAR REQUIRED

Weather Minimums: 5500 feet ceiling
and 5 mile visibility.

1	2	3	4	5	6	7	8	9	10	11	12	13	14	15	16
---	---	---	---	---	---	---	---	---	----	----	----	----	----	----	----

FOUR STACKS VISUAL APPROACH RWY 15

When Visual Approaches to Runway 15 are in progress, clearances will be given to aircraft from the Northwest thru Northeast utilizing the following phraseology:

"(IDENT) CLEARED FOR FOUR STACKS VISUAL
APPROACH TO RUNWAY 15."

SW-3, 22 FEB 2024 to 21 MAR 2024

SW-3, 22 FEB 2024 to 21 MAR 2024

LOC I-BUR 109.5	APP CRS 079°	Rwy Idg TDZE Apt Elev 5801 727 778
---------------------------	------------------------	--


ILS Y or LOC Y RWY 8

BOB HOPE (BUR)

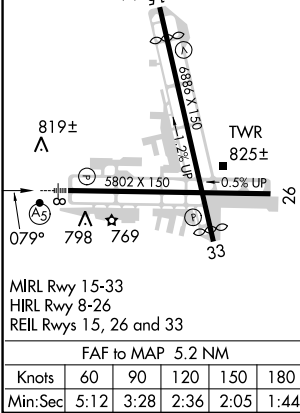
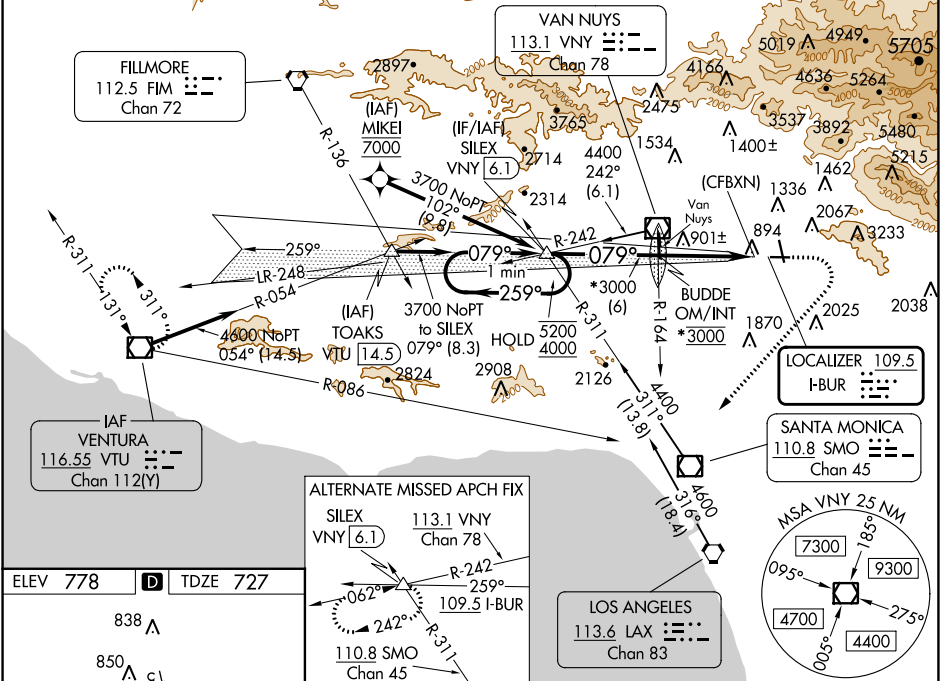
From MIKEI: RNAV 1-GPS required.

Localizer unusable within 0.9 NM to thld. Straight-in Rwy 8 at night, Circling to Rwy 33 at night, operational VGSI required, remain on or above VGSI glidepath until threshold.

Circling Rwy 26 NA at night and Circling Rwy 33 NA at night for Cat D. Circling NA for Cats A/B/C northeast of Rwy 15 and 26. Circling NA for Cat D east of Rwy 15-33. Inop table does not apply to S-ILS Rwy 8. For inop ALS, increase S-LOC 8 Cats A/B visibility to 1¼ SM. Rwy 8 helicopter visibility reduction below RVR 5000 NA.

MALS

MISSED APPROACH:
 Climb to 1800 then climbing right turn to 4600 on heading 210° and VTU VOR/DME R-086 to VTU VOR/DME and hold.

D-ATIS 134.5	SOCAL APP CON 120.4 360.6 (NORTH) 134.2 338.2 (WEST)	BURBANK TOWER 118.7 254.3	GND CON 123.9 348.6	CLNC DEL 118.0 348.6	CPDLC
------------------------	--	-------------------------------------	-------------------------------	--------------------------------	-------



CATEGORY	A	B	C	D
S-ILS 8		1555-2½	828 (800-2½)	
S-LOC 8	1620-1¼	893 (900-1)	1620-2	893 (900-2)
CIRCLING	1620-1¼ 842 (900-1¼)	1640-1¼ 862 (900-1¼)	2240-3 1462 (1500-3)	2320-3 1542 (1600-3)

SW-3, 22 FEB 2024 to 21 MAR 2024

SW-3, 22 FEB 2024 to 21 MAR 2024

LOC I-BUR 109.5	APP CRS 079°	Rwy Idg TDZE Apt Elev	5801 727 778
---------------------------	------------------------	-----------------------------	---

ILS Z or LOC Z RWY 8

BOB HOPE (BUR)

From MIKEI: RNAV 1-GPS required.

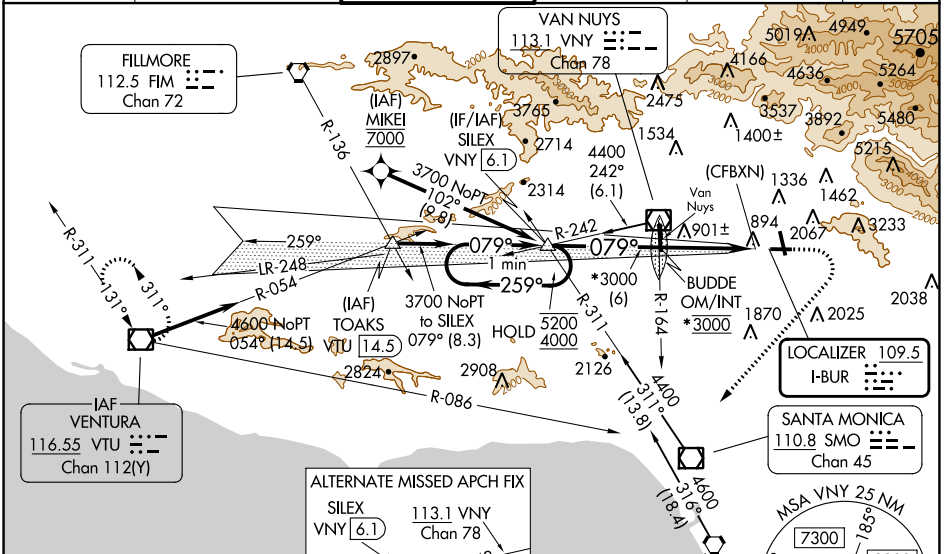
⚠ Localizer unusable within 0.9 NM to thld. Straight-in Rwy 8 at night, Circling to Rwy 33 at night, operational VGS1 required, remain on or above VGS1 glidepath until threshold. Circling Rwy 26 NA at night and Circling Rwy 33 NA at night for Cat D. Circling NA for Cats A/B/C northeast of Rwy 15 and 26. Circling NA for Cat D east of Rwy 15-33. Inop table does not apply to S-ILS 8. For inop ALS, increase S-LOC 8 Cats A/B visibility to RVR 6000 and S-LOC 8 Cats C/D visibility to 1/4 SM. Rwy 8 helicopter visibility reduction below RVR 5000 NA.

MALSR



MISSED APPROACH: Climb to 1300 then climbing right turn to 4600 on heading 210° and VTU VOR/DME R-086 to VTU VOR/DME and hold. #Messed approach requires a minimum climb of 340 feet per NM to 2520 (if unable to meet climb gradient, see ILS Y or LOC Y RWY 8).

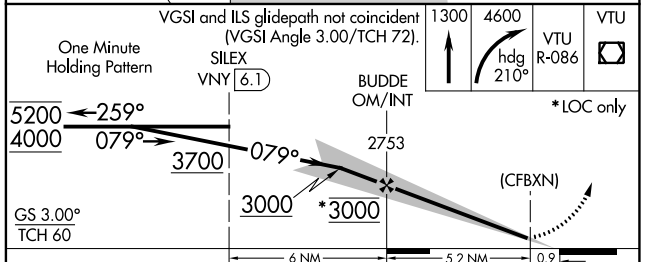
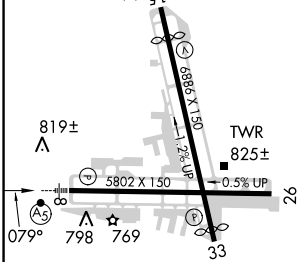
D-ATIS 134.5	SOCAL APP CON 120.4 360.6 (NORTH) 134.2 338.2 (WEST)	BURBANK TOWER 118.7 254.3	GND CON 123.9 348.6	CLNC DEL 118.0 348.6	CPDLC
------------------------	--	-------------------------------------	-------------------------------	--------------------------------	-------



SW-3, 22 FEB 2024 to 21 MAR 2024

SW-3, 22 FEB 2024 to 21 MAR 2024

ELEV 778	D	TDZE 727
----------	----------	----------



MIRL Rwy 15-33 HIRL Rwy 8-26 REIL Rws 15, 26 and 33 FAF to MAP 5.2 NM	<table border="1"> <tr> <th>Knots</th> <td>60</td> <td>90</td> <td>120</td> <td>150</td> <td>180</td> </tr> <tr> <th>Min:Sec</th> <td>5:12</td> <td>3:28</td> <td>2:36</td> <td>2:05</td> <td>1:44</td> </tr> </table>	Knots	60	90	120	150	180	Min:Sec	5:12	3:28	2:36	2:05	1:44	<table border="1"> <tr> <th>CATEGORY</th> <td>A</td> <td>B</td> <td>C</td> <td>D</td> </tr> <tr> <th>S-ILS 8 #</th> <td></td> <td>1075/50</td> <td>348 (300-1)</td> <td></td> </tr> <tr> <th>S-LOC 8 #</th> <td></td> <td>1160/50</td> <td>433 (400-1)</td> <td></td> </tr> <tr> <th>C CIRCLING</th> <td>1280-1 1/8 502 (600-1 1/8)</td> <td>1640-1 1/4 862 (900-1 1/4)</td> <td>2240-3 1462 (1500-3)</td> <td>2320-3 1542 (1600-3)</td> </tr> </table>	CATEGORY	A	B	C	D	S-ILS 8 #		1075/50	348 (300-1)		S-LOC 8 #		1160/50	433 (400-1)		C CIRCLING	1280-1 1/8 502 (600-1 1/8)	1640-1 1/4 862 (900-1 1/4)	2240-3 1462 (1500-3)	2320-3 1542 (1600-3)
Knots	60	90	120	150	180																													
Min:Sec	5:12	3:28	2:36	2:05	1:44																													
CATEGORY	A	B	C	D																														
S-ILS 8 #		1075/50	348 (300-1)																															
S-LOC 8 #		1160/50	433 (400-1)																															
C CIRCLING	1280-1 1/8 502 (600-1 1/8)	1640-1 1/4 862 (900-1 1/4)	2240-3 1462 (1500-3)	2320-3 1542 (1600-3)																														

APP CRS	Rwy Idg	N/A
124°	TDZE	N/A
	Apt Elev	778

RNAV (GPS)-A

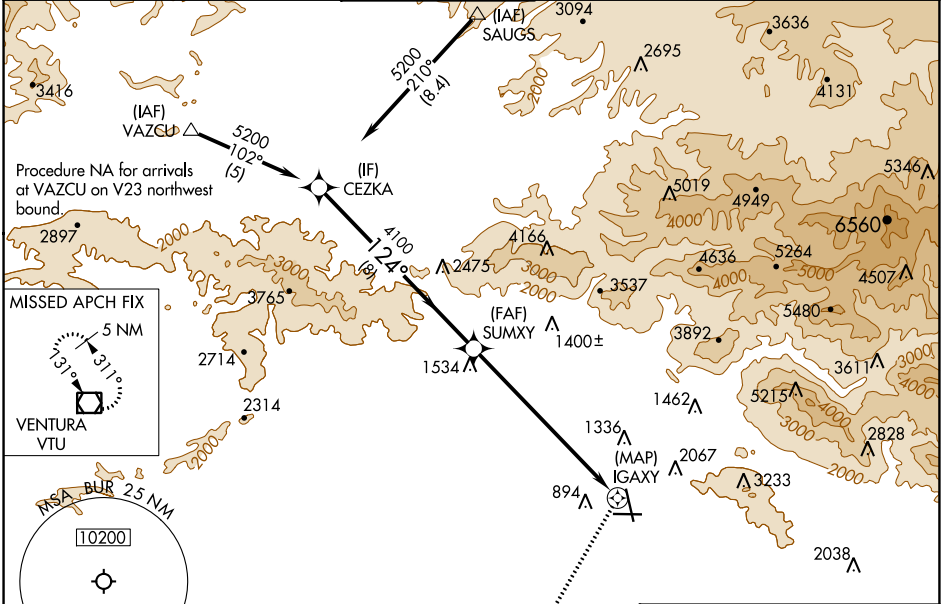
BOB HOPE (BUR)

RNP APCH.

▼ Circling NA for Cats A/B/C northeast of Rwy 15 and 26. Circling NA for Cat D east of Rwy 15-33. Circling Rwy 26 NA at night and Circling Rwy 33 NA at night for Cat D. Circling to Rwy 8, 33 at night, operational VGSI required, remain on or above VGSI glidepath until threshold.

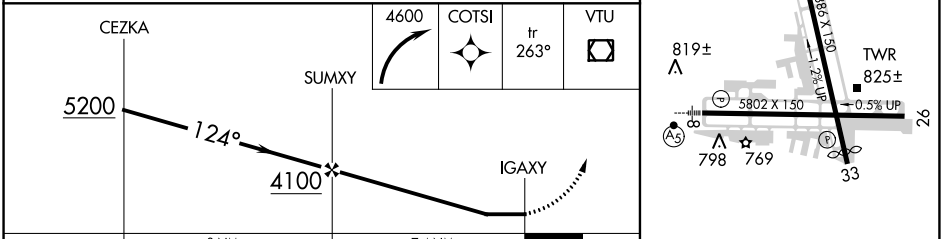
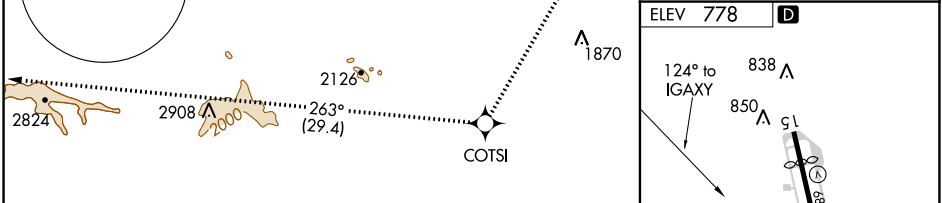
MISSED APPROACH: Climbing right turn to 4600 direct COTSI on track 263° to VTU VOR/DME and hold.

D-ATIS	SOCAL APP CON	BURBANK TOWER	GND CON	CLNC DEL	CPDLC
134.5	120.4 360.6 (NORTH) 134.2 338.2 (WEST)	118.7 254.3	123.9 348.6	118.0 348.6	



SW-3, 22 FEB 2024 to 21 MAR 2024

SW-3, 22 FEB 2024 to 21 MAR 2024



CATEGORY	A	B	C	D
C CIRCLING	1860-1¼ 1082 (1100-1¼)	1860-1½ 1082 (1100-1½)	2240-3 1462 (1500-3)	2320-3 1542 (1600-3)

MIRL Rwy 15-33
HIRL Rwy 8-26
REIL Rws 15, 26 and 33

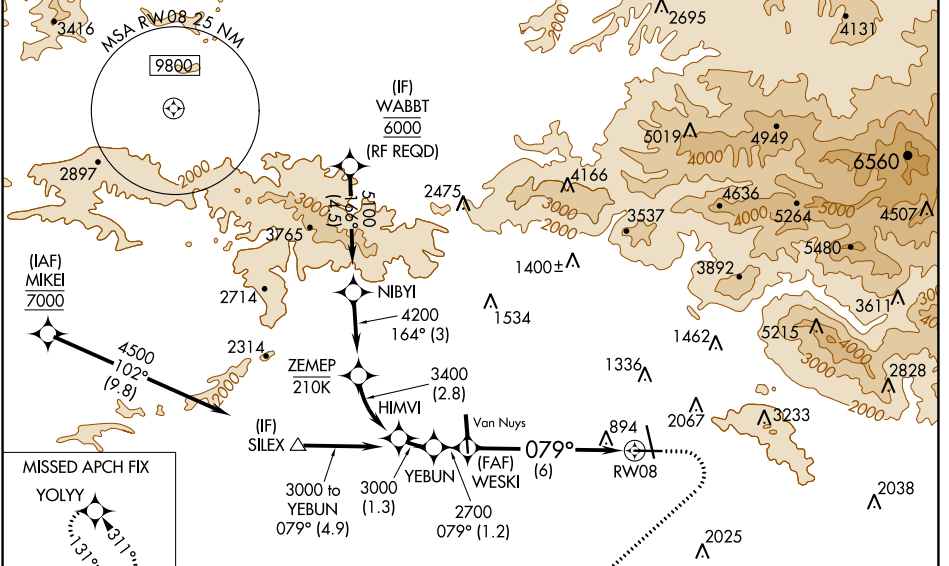
APP CRS	Rwy Idg	5801
079°	TDZE	727
	Apt Elev	778

RNAV (RNP) Y RWY 8

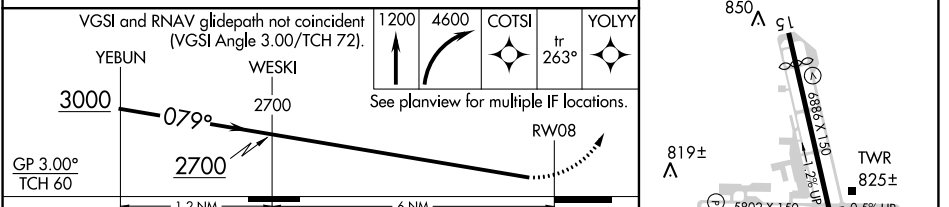
BOB HOPE (BUR)

RNP AR APCH.	MALSR	MISSED APPROACH: Climb to 1200 then climbing right turn to 4600 direct COTSI and on track 263° to YOLYY and hold. *Missed approach requires minimum climb of 340 feet per NM to 2400. # Missed approach requires minimum climb of 317 feet per NM to 2400.
<p>⚠ For uncompensated Baro-VNAV systems, procedure NA below 1°C or above 54°C. Straight-in Rwy 8 at night, operational VGSI required, remain on or above VGSI glidepath until threshold. Inop table does not apply to RNP 0.20* and RNP 0.30. For inop ALS, increase RNP 0.30# all Cats visibility to 1½ SM.</p>		

D-ATIS	SOCAL APP CON	BURBANK TOWER	GND CON	CLNC DEL	CPDLC
134.5	120.4 360.6 (NORTH) 134.2 338.2 (WEST)	118.7 254.3	123.9 348.6	118.0 348.6	



ELEV	778	TDZE	727
------	-----	------	-----



CATEGORY	A	B	C	D
RNP 0.20 DA*		1068/50	341 (300-1)	
RNP 0.30 DA#		1151/50	424 (400-1)	
RNP 0.30 DA		1485-2½	758 (800-2½)	

AUTHORIZATION REQUIRED

SW-3, 22 FEB 2024 to 21 MAR 2024

SW-3, 22 FEB 2024 to 21 MAR 2024

MIRL Rwy 15-33
HIRL Rwy 8-26
REIL Rwy 15, 26 and 33

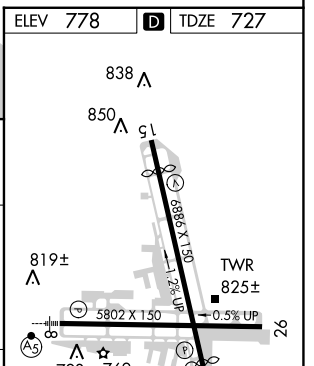
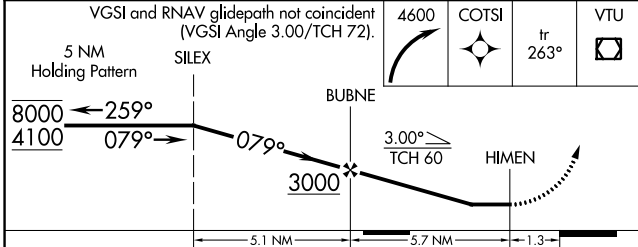
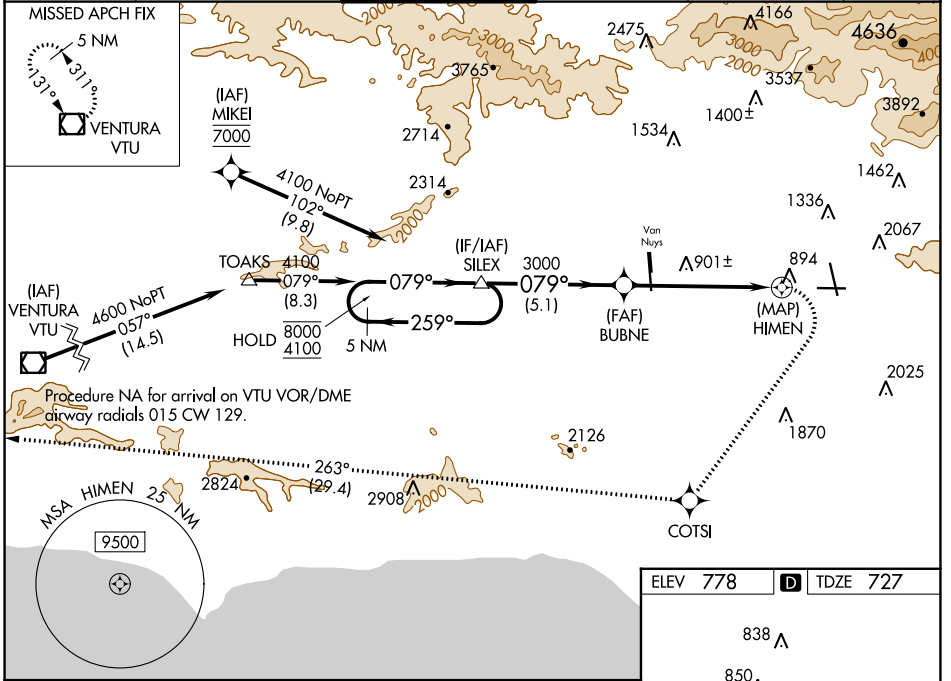
WAAS CH 53638 W08A	APP CRS 079°	Rwy Idg TDZE Apt Elev	5801 727 778
--	------------------------	-----------------------------	---

RNAV (GPS) Z RWY 8

BOB HOPE (BUR)

RNP APCH.		MALSR 	MISSED APPROACH: Climbing right turn to 4600 direct COTS1 and on track 263° to VTU VOR/DME and hold.
⚠ Straight-in Rwy 8 at night, Circling to Rwy 33 at night, operational VGSI required, remain on or above VGSI glidepath until threshold. Circling Rwy 26 NA at night and Circling Rwy 33 NA at night for Cat D. Circling NA for Cats A/B/C northeast of Rwy 15 and 26. Circling NA for Cat D east of Rwy 15-33. For inop ALS, increase LP Cat A/B visibility to 1½ SM and LP Cat C/D visibility to 2½ SM. For inop ALS, increase LNAV Cat A/B visibility to 1½ SM. Rwy 8 helicopter visibility reduction below RVR 5000 NA.			

D-ATIS 134.5	SOCAL APP CON 120.4 360.6 (NORTH) 134.2 338.2 (WEST)	BURBANK TOWER 118.7 254.3	GND CON 123.9 348.6	CLNC DEL 118.0 348.6	CPDLC
------------------------	--	-------------------------------------	-------------------------------	--------------------------------	-------



CATEGORY	A	B	C	D
LP MDA	1540/60	813 (800-1½)	1540-1⅞	813 (800-1⅞)
LNAV MDA	1660/60	933 (900-1½)	1660-2	933 (900-2)
C CIRCLING	1660-1½	882 (900-1½)	2240-3 1462 (1500-3)	2320-3 1542 (1600-3)

MIRL Rwy 15-33
 HIRL Rwy 8-26
 REIL Rwy 15, 26, and 33

SW-3, 22 FEB 2024 to 21 MAR 2024


SW-3, 22 FEB 2024 to 21 MAR 2024

VOR/DME VNY	APP CRS	Rwy Idg	5801
113.1	089°	TDZE	727
Chan 78		Apt Elev	778

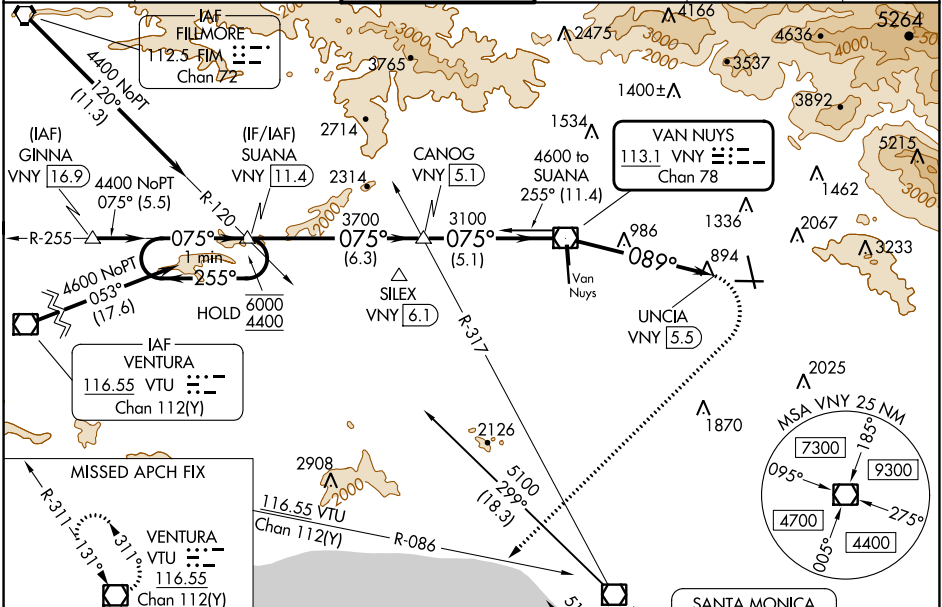
VOR RWY 8

BOB HOPE (BUR)

⚠ Straight-in Rwy 8 at night, Circling to Rwy 33 at night, operational VGSI required, remain on or above VGSI glidepath until threshold. Circling Rwy 26 NA at night and Circling Rwy 33 NA at night for Cat D. Circling NA for Cats A/B/C northeast of Rwy 15 and 26. Circling NA for Cat D east of Rwy 15-33. Inop table does not apply. Rwy 8 helicopter visibility reduction below RVR 5000 NA.

MALSR  MISSED APPROACH: Climbing right turn to 4600 on heading 210° and VTU VOR/DME R-086 to VTU VOR/DME and hold.

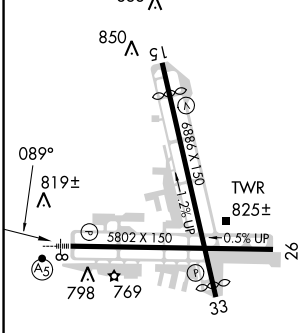
D-ATIS	SOCAL APP CON	BURBANK TOWER	GND CON	CLNC DEL	CPDLC
134.5	120.4 360.6 (NORTH) 134.2 338.2 (WEST)	118.7 254.3	123.9 348.6	118.0 348.6	



SW-3, 22 FEB 2024 to 21 MAR 2024

SW-3, 22 FEB 2024 to 21 MAR 2024

ELEV 778	D	TDZE 727
----------	----------	----------

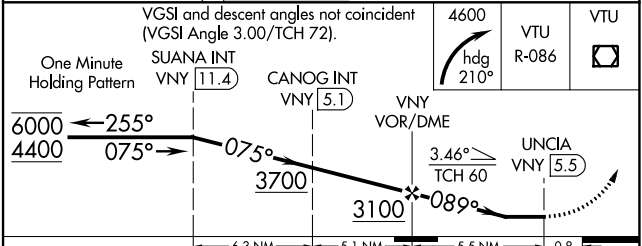
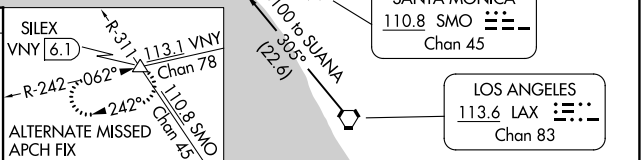


MIRL Rwy 15-33
HIRL Rwy 8-26
REIL Rwys 15, 26 and 33

FAF to MAP 5.5 NM

Knots	60	90	120	150	180
Min:Sec	5:30	3:40	2:45	2:12	1:50

CIRCLING



CATEGORY	A	B	C	D
S-8	1600/55 873 (900-1)	1600-1¼ 873 (900-1¼)	1600-2½ 873 (900-2½)	
<input checked="" type="checkbox"/> CIRCLING	1600-1¼ 822 (900-1¼)	1640-1¼ 862 (900-1¼)	2240-3 1462 (1500-3)	2320-3 1542 (1600-3)