

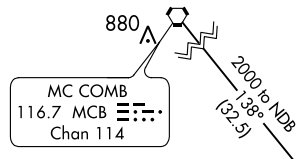
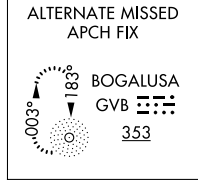
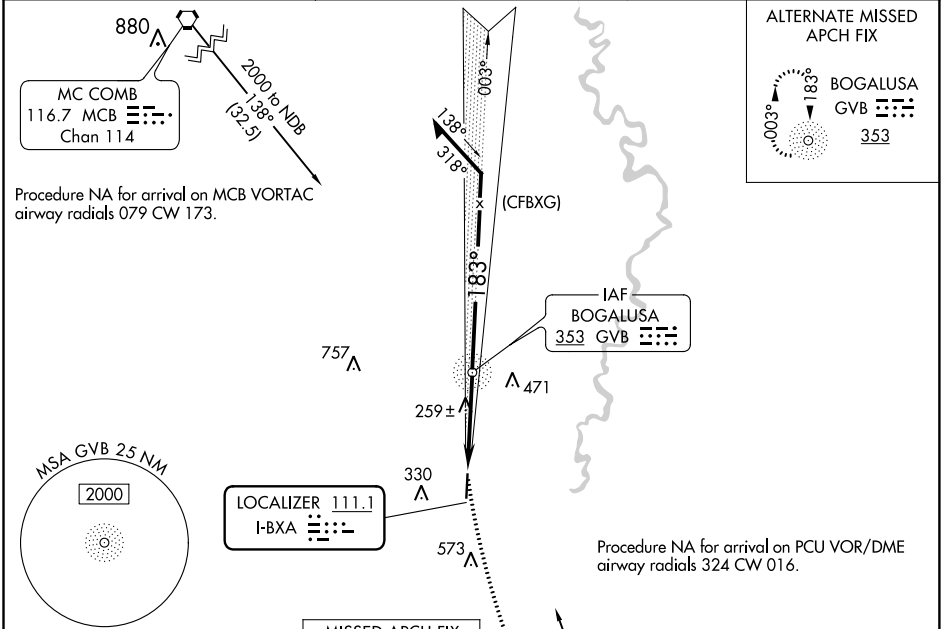
LOC I-BXA <b>111.1</b>	APP CRS <b>183°</b>	Rwy ldg TDZE Apt Elev	<b>5002</b> <b>119</b> <b>119</b>
---------------------------	------------------------	-----------------------------	---

# LOC RWY 18

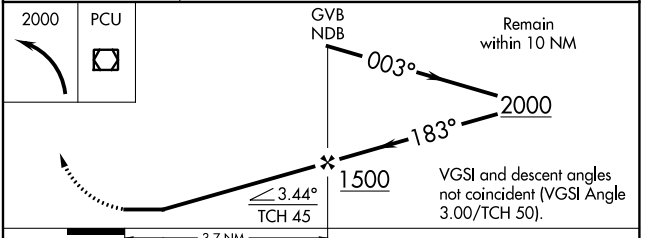
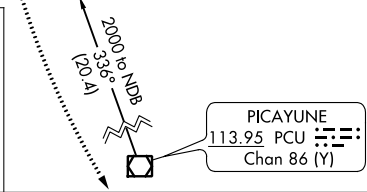
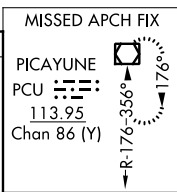
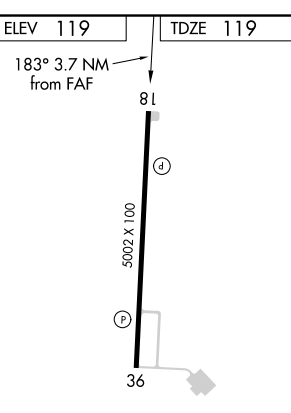
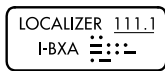
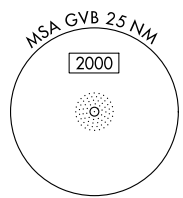
GEORGE R CARR MEML AIR FLD (BXA)

ADF required ▼ ▲	MISSED APPROACH: Climbing left turn to 2000 direct PCU VOR/DME and hold.
------------------------	--

AWOS-3PT <b>118.025</b>	HOUSTON CENTER <b>126.8 327.8</b>	UNICOM <b>122.8 (CTAF) 0</b>
----------------------------	--------------------------------------	---------------------------------



Procedure NA for arrival on MCB VORTAC airway radials 079 CW 173.



REIL Rwy 18 and 36  
MIRL Rwy 18-36

FAF to MAP 3.7 NM

Knots	60	90	120	150	180
Min:Sec	3:42	2:28	1:51	1:29	1:14

CATEGORY	A	B	C	D
S-18	520-1	401 (500-1)	520-1 <sup>1</sup> / <sub>8</sub> 401 (500-1 <sup>1</sup> / <sub>8</sub> )	NA
CIRCLING	620-1 501 (600-1)	720-1 601 (700-1)	880-2 <sup>1</sup> / <sub>4</sub> 761 (800-2 <sup>1</sup> / <sub>4</sub> )	NA

# LOC RWY 18

SC-4, 11 AUG 2022 to 08 SEP 2022

SC-4, 11 AUG 2022 to 08 SEP 2022

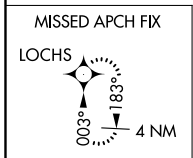
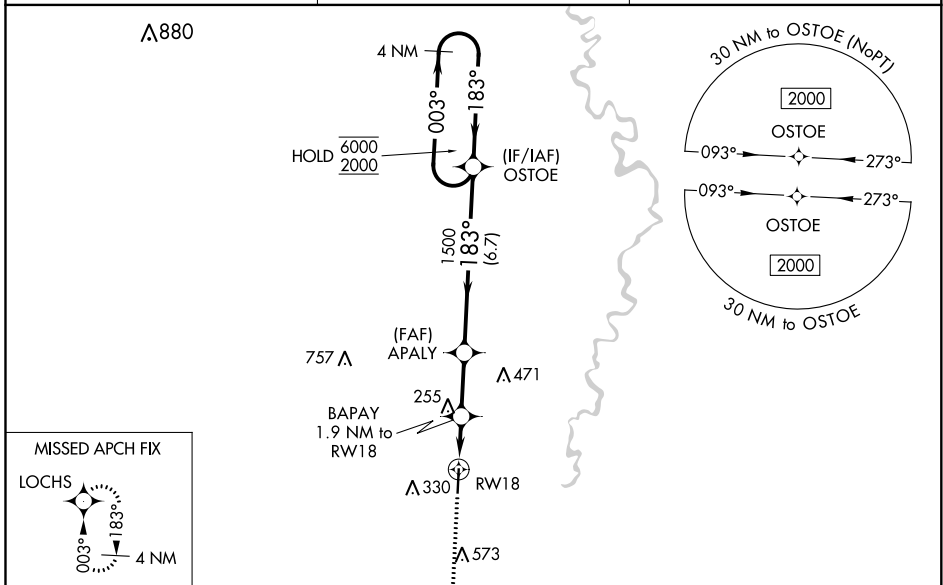
WAAS CH <b>72613</b> <b>W18A</b>	APP CRS <b>183°</b>	Rwy Idg TDZE <b>119</b> Apt Elev <b>119</b>	<b>5002</b>
--	------------------------	---	-------------

# RNAV (GPS) RWY 18

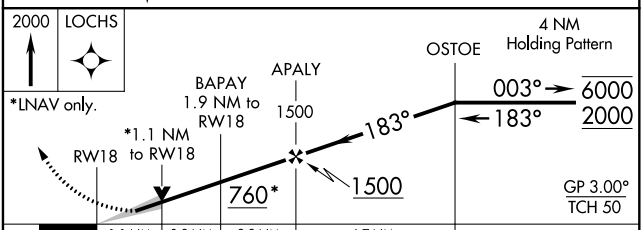
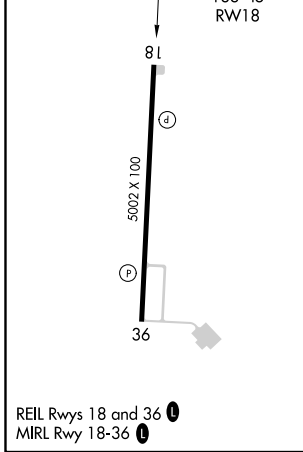
GEORGE R CARR MEML AIR FLD (B.X.A)

RNP APCH.	MISSED APPROACH: Climb to 2000 direct LOCHS and hold.
For uncompensated Baro-VNAV systems, procedure NA below -15°C or above 54°C.	

AWOS-3PT <b>118.025</b>	HOUSTON CENTER <b>126.8 327.8</b>	UNICOM <b>122.8 (CTAF) 0</b>
----------------------------	--------------------------------------	---------------------------------



ELEV <b>119</b>	TDZE <b>119</b>
-----------------	-----------------



CATEGORY	A	B	C	D
LPV DA	387-1		268 (300-1)	NA
LNAV/VNAV DA	554-1 <sup>3</sup> / <sub>8</sub>		435 (500-1 <sup>3</sup> / <sub>8</sub> )	NA
LNAV MDA	520-1	401 (500-1)	520-1 <sup>1</sup> / <sub>8</sub> 401 (500-1 <sup>1</sup> / <sub>8</sub> )	NA
CIRCLING	620-1 501 (600-1)	720-1 601 (700-1)	880-2 <sup>1</sup> / <sub>4</sub> 761 (800-2 <sup>1</sup> / <sub>4</sub> )	NA

SC-4, 11 AUG 2022 to 08 SEP 2022

SC-4, 11 AUG 2022 to 08 SEP 2022

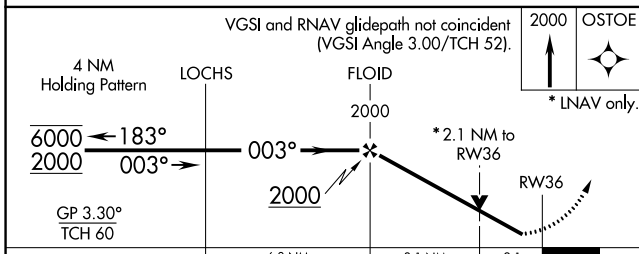
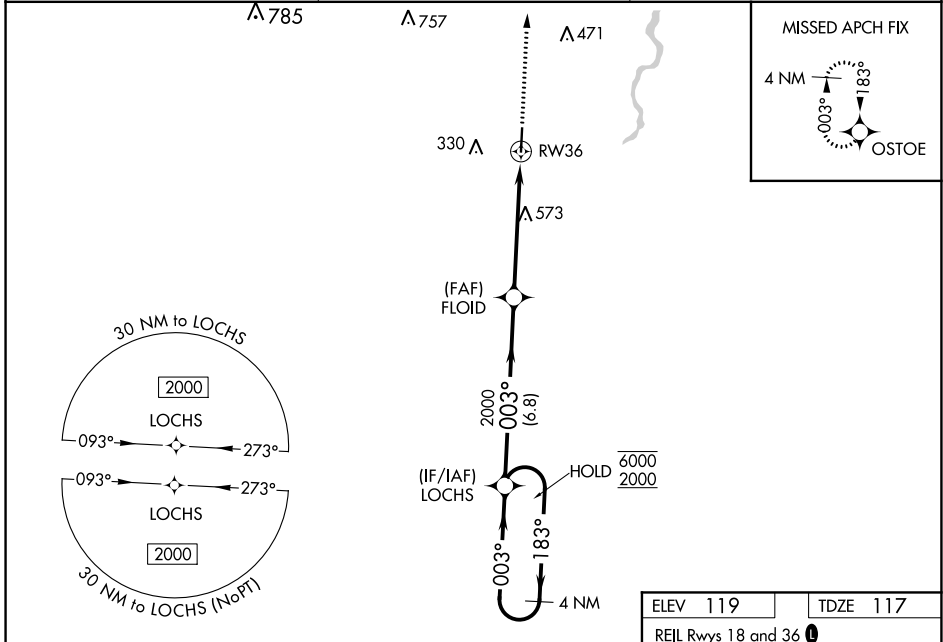
WAAS CH <b>62913</b> <b>W36A</b>	APP CRS <b>003°</b>	Rwy Idg TDZE <b>117</b> Apt Elev <b>119</b>	<b>5002</b>
--	------------------------	---	-------------

# RNAV (GPS) RWY 36

GEORGE R CARR MEML AIR FLD (BXA)

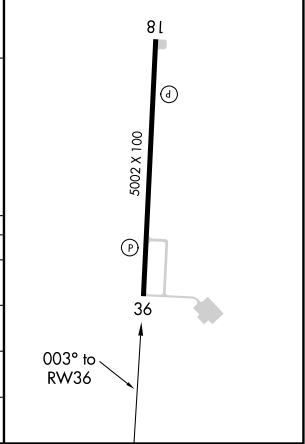
RNP APCH.	MISSED APPROACH: Climb to 2000 direct OSTOE and hold.
-----------	---

AWOS-3PT <b>118.025</b>	HOUSTON CENTER <b>126.8 327.8</b>	UNICOM <b>122.8 (CTAF) 0</b>
----------------------------	--------------------------------------	---------------------------------



ELEV 119	TDZE 117
----------	----------

REIL Rwy 18 and 36 0  
MIRL Rwy 18-36 0



CATEGORY	A	B	C	D
LPV DA	421-1	304 (400-1)		NA
LNAV/VNAV DA	512-1 $\frac{1}{8}$	395 (400-1 $\frac{1}{8}$ )		NA
LNAV MDA	840-1	723 (800-1)	840-2 723 (800-2)	NA
CIRCLING	840-1	721 (800-1)	880-2 $\frac{1}{4}$ 761 (800-2 $\frac{1}{4}$ )	NA

SC-4, 11 AUG 2022 to 08 SEP 2022

SC-4, 11 AUG 2022 to 08 SEP 2022

PCU VOR/DME <b>113.95</b> Chan <b>86 (Y)</b>	APP CRS <b>150°</b>	Rwy Idg TDZE Apt Elev	<b>N/A</b> <b>N/A</b> <b>119</b>
--	------------------------	-----------------------------	--

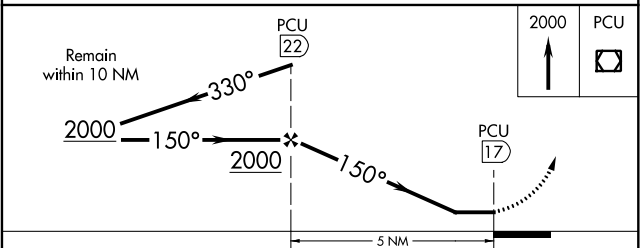
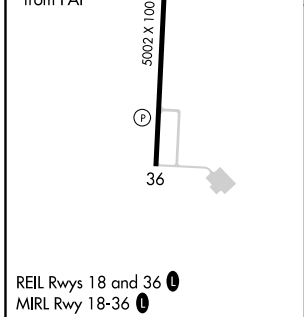
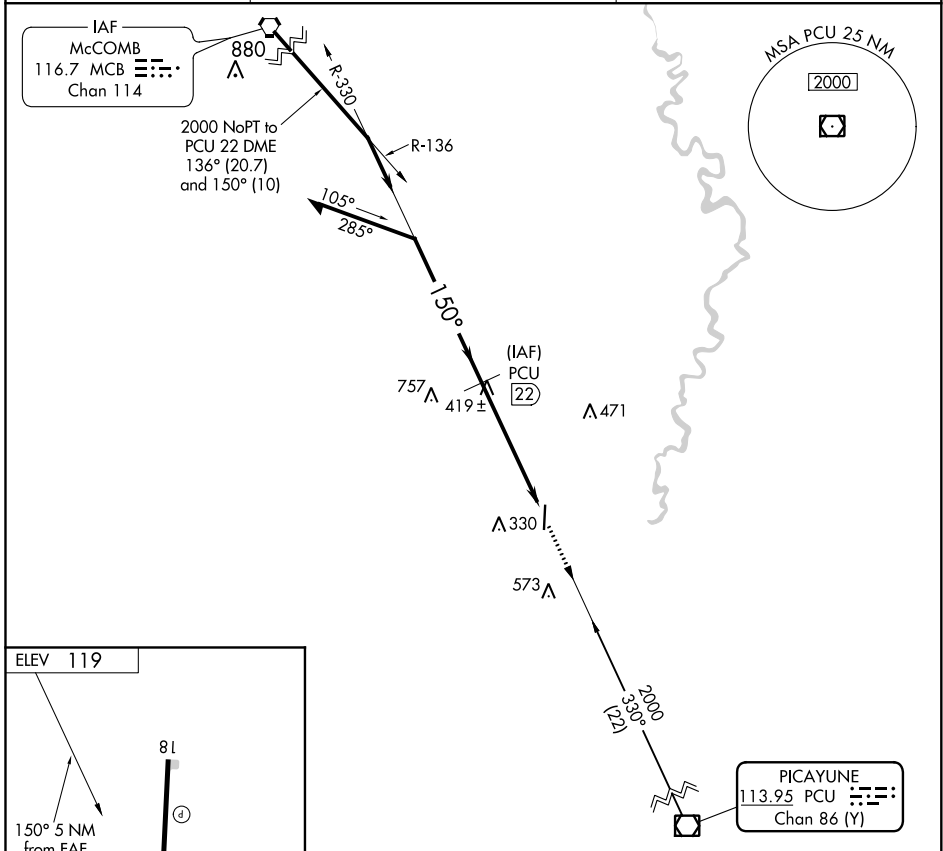
# VOR/DME-A

GEORGE R CARR MEML AIR FLD (BXA)

**NA** If local altimeter setting not received; use New Orleans Lakefront altimeter setting and increase all MDAs 220 feet.

MISSED APPROACH: Climb to 2000 direct PCU VOR/DME.

AWOS-3PT <b>118.025</b>	HOUSTON CENTER <b>126.8 327.8</b>	UNICOM <b>122.8 (CTAF)</b> <b>0</b>
----------------------------	--------------------------------------	--



CATEGORY	A	B	C	D
CIRCLING	680-1 561 (600-1)	720-1 601 (700-1)	880-2¼ 761 (800-2¼)	NA

SC-4, 11 AUG 2022 to 08 SEP 2022

SC-4, 11 AUG 2022 to 08 SEP 2022