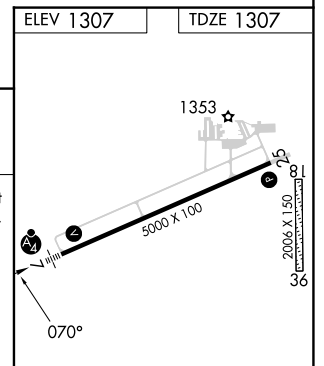
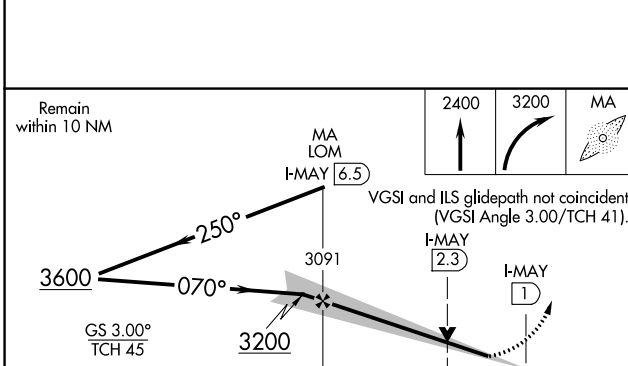
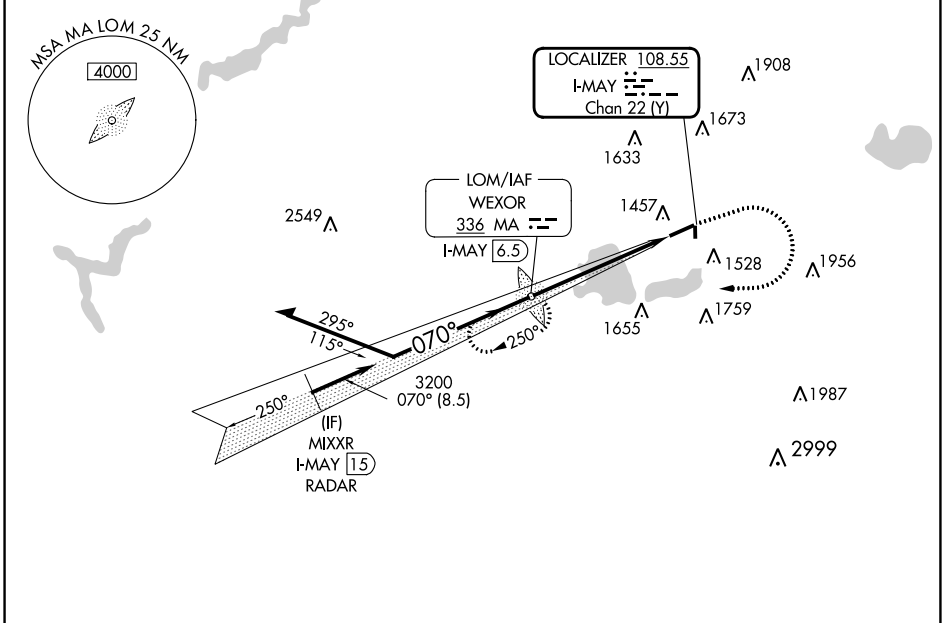


LOC/DME I-MAY 108.55 Chan 22 (Y)	APP CRS 070°	Rwy Idg TDZE Apt Elev	5000 1307 1307
--	------------------------	-----------------------------	---

ILS or LOC RWY 7

WEXFORD COUNTY (CAD)

ADF required. RADAR required for procedure entry.		MALSF	MISSED APPROACH: Climb to 2400 then climbing right turn to 3200 direct WEXOR. LOM/I-MAY 6.5 DME and hold.
<p>▼ Circling NA to Rwys 18 and 36. Inop table does not apply to S-ILS 7 all Cats.</p> <p>▲ NA For inop ALS, increase S-LOC 7 Cat C/D visibility to 1 1/8 SM.</p>			
AWOS-3P 128.325	MINNEAPOLIS CENTER 132.9 338.3	UNICOM 122.8 (CTAF) 0	



CATEGORY	A	B	C	D
S-ILS 7	1507-3/4		200 (200-3/4)	
S-LOC 7	1760-3/4 453 (500-3/4)		1760-1 453 (500-1)	
C CIRCLING	1840-1 533 (600-1)		2040-2 733 (800-2) 2060-2 1/2 753 (800-2 1/2)	

HIRL Rwy 7-25					
REIL Rwys 7 and 25					
FAF to MAP 5.5 NM					
Knots	60	90	120	150	180
Min:Sec	5:30	3:40	2:45	2:12	1:50

EC-1, 22 FEB 2024 to 21 MAR 2024

EC-1, 22 FEB 2024 to 21 MAR 2024

WAAS CH 97513 W25A	APP CRS 250°	Rwy Idg TDZE 1305 Apt Elev 1307
--	------------------------	---

RNAV (GPS) RWY 25

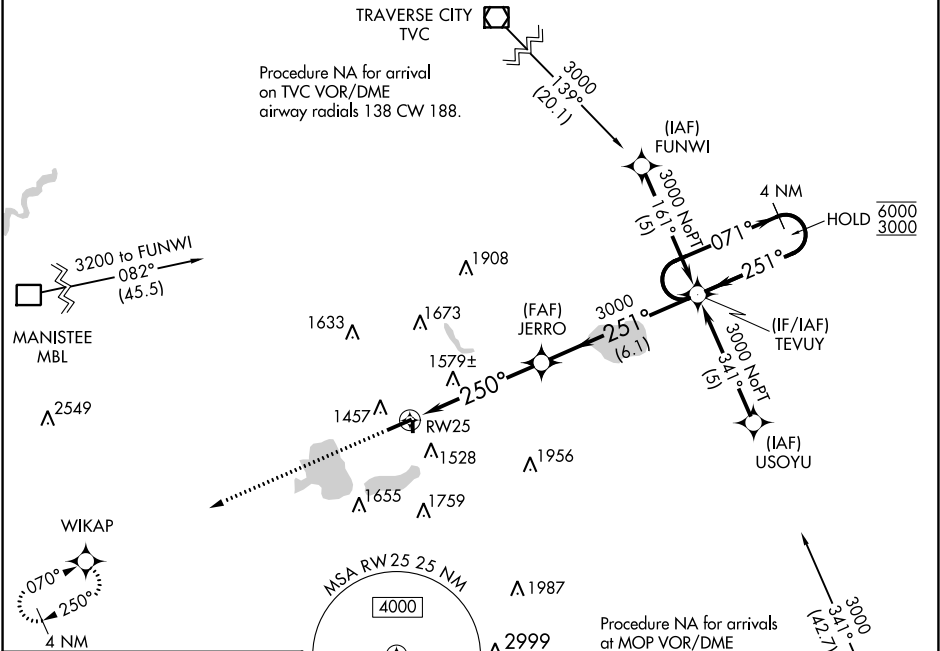
WEXFORD COUNTY (CAD)

RNP APCH - GPS.

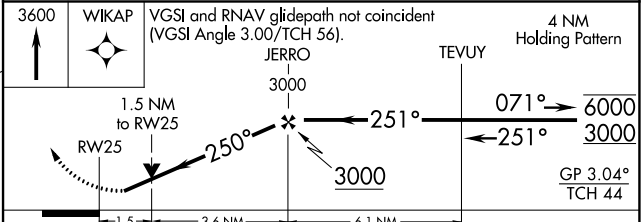
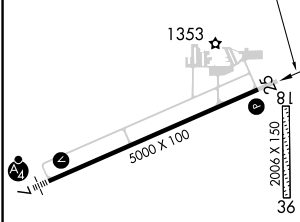
▼ Circling NA to Rwy 18 and 36. Rwy 25 helicopter visibility reduction below 3/4 SM NA.
▲ For uncompensated Baro-VNAV systems, LNAV/VNAV NA below -24°C or above 54°C.

MISSED APPROACH: Climb to 3600 direct WIKAP and hold.

AWOS-3P 128.325	MINNEAPOLIS CENTER 132.9 338.3	UNICOM 122.8 (CTAF) 0
---------------------------	--	---------------------------------



ELEV 1307	TDZE 1305
-----------	-----------



CATEGORY	A	B	C	D
LPV DA		1625-7/8	320 (400-7/8)	
LNAV/VNAV DA		1869-15/8	564 (600-15/8)	
LNAV MDA	1840-1	535 (600-1)	1840-1 1/2	535 (600-1 1/2)
C CIRCLING	1840-1	533 (600-1)	2040-2 733 (800-2)	2060-2 1/2 753 (800-2 1/2)

HIRL Rwy 7-25 **0**
 REIL Rwy 7 and 25 **0**

EC-1, 22 FEB 2024 to 21 MAR 2024

EC-1, 22 FEB 2024 to 21 MAR 2024

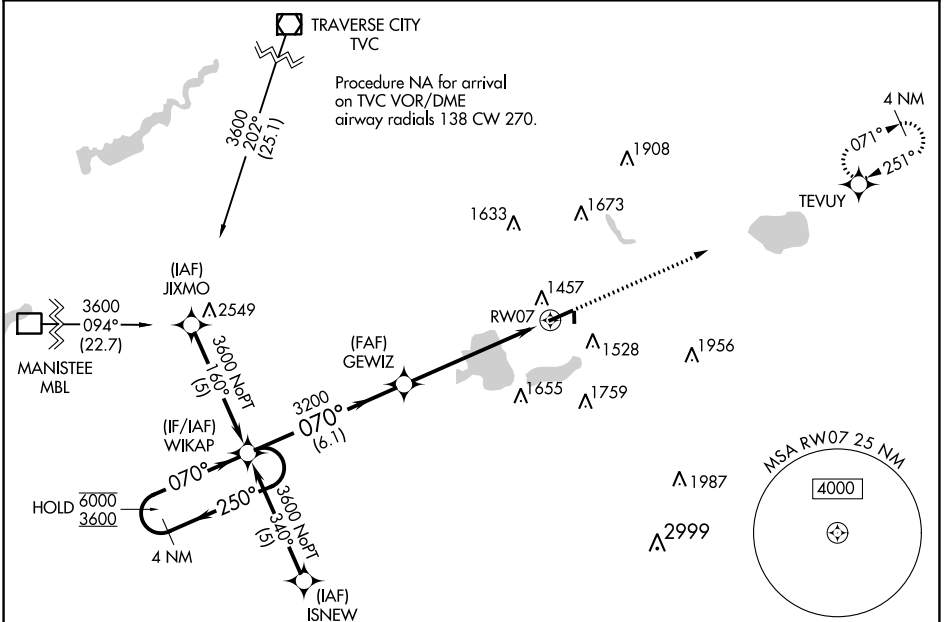
WAAS CH 86413 W07A	APP CRS 070°	Rwy Idg 5000 TDZE 1307 Apt Elev 1307
--	------------------------	---

RNAV (GPS) RWY 7

WEXFORD COUNTY (CAD)

RNP APCH - GPS.	MALSF	MISSED APPROACH: Climb to 3000 direct TEVUY and hold.
<p>⚠ Circling NA to Rwy 18 and 36. Inop table does not apply to LPV all Cats. ⚠ For uncompensated Baro-VNAV systems, LNAV/VNAV NA below -24°C or above 54°C. For inop ALS, increase LNAV/VNAV visibility all Cats to 1½ SM.</p>		

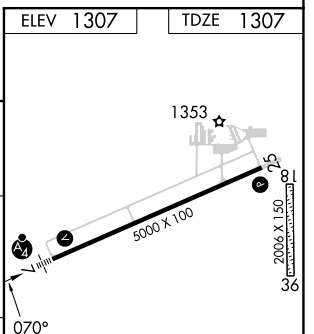
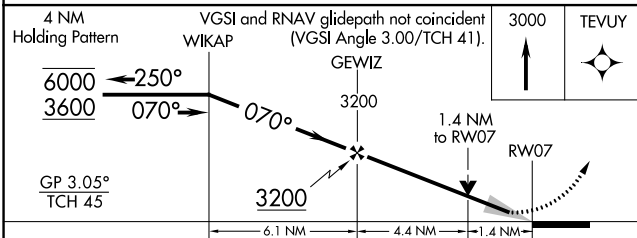
AWOS-3P 128.325	MINNEAPOLIS CENTER 132.9 338.3	UNICOM 122.8 (CTAF) 0
---------------------------	--	---------------------------------



EC-1, 22 FEB 2024 to 21 MAR 2024

EC-1, 22 FEB 2024 to 21 MAR 2024

ELEV 1307	TDZE 1307
-----------	-----------



CATEGORY	A	B	C	D
LPV DA		1507-¾	200 (200-¾)	
LNAV/VNAV DA		1761-1	454 (500-1)	
LNAV MDA	1780-¾	473 (500-¾)	1780-1½	473 (500-1½)
CIRCLING	1840-1	533 (600-1)	2040-2 733 (800-2)	2060-2½ 753 (800-2½)

HIRL Rwy 7-25 0	REIL Rwy 7 and 25 0
-----------------	---------------------