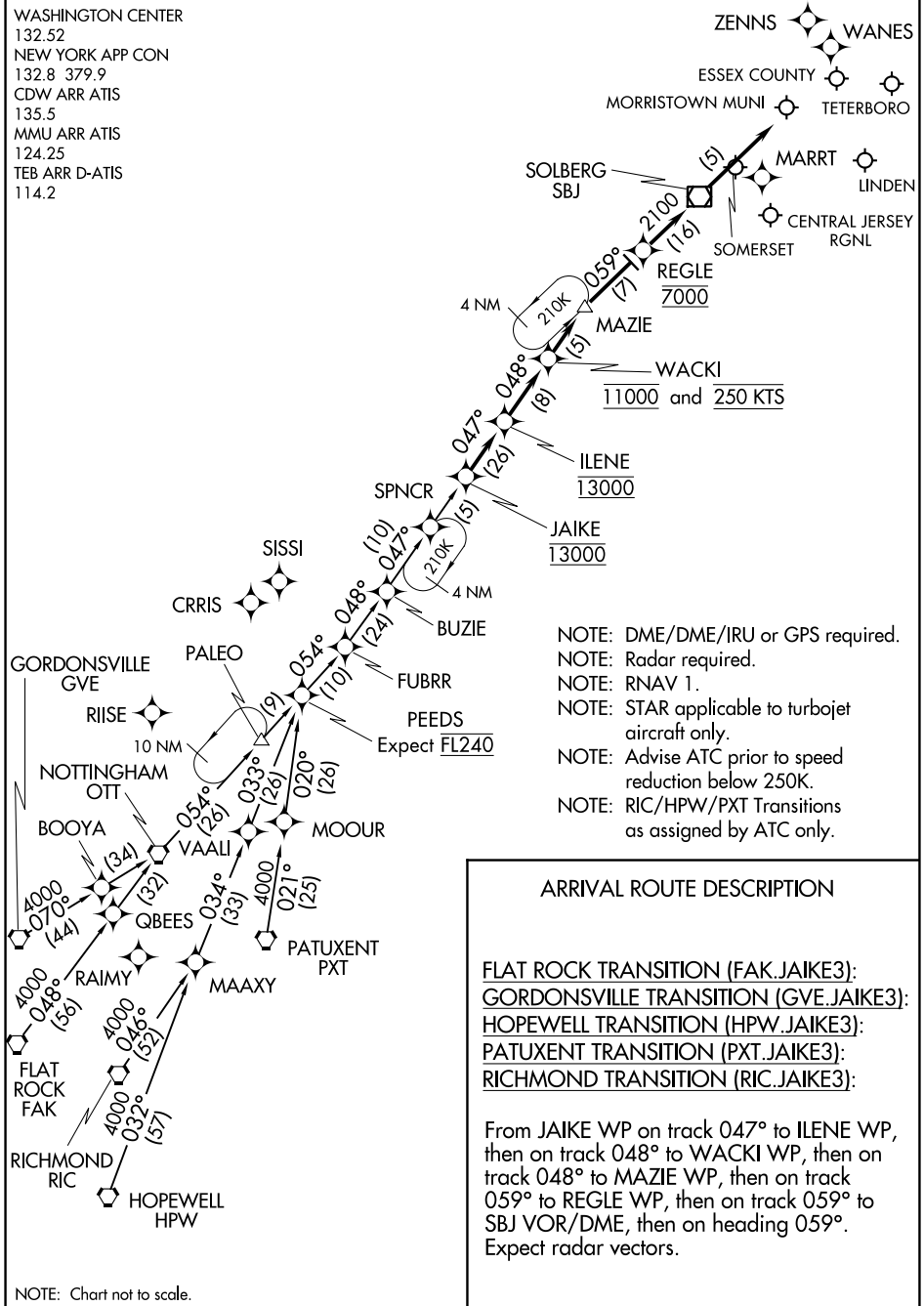


# JAIKE THREE ARRIVAL (RNAV)

TETERBORO, NEW JERSEY

WASHINGTON CENTER  
 132.52  
 NEW YORK APP CON  
 132.8 379.9  
 CDW ARR ATIS  
 135.5  
 MMU ARR ATIS  
 124.25  
 TEB ARR D-ATIS  
 114.2



- NOTE: DME/DME/IRU or GPS required.
- NOTE: Radar required.
- NOTE: RNAV 1.
- NOTE: STAR applicable to turbojet aircraft only.
- NOTE: Advise ATC prior to speed reduction below 250K.
- NOTE: RIC/HPW/PXT Transitions as assigned by ATC only.

## ARRIVAL ROUTE DESCRIPTION

- FLAT ROCK TRANSITION (FAK.JAIKE3):
- GORDONVILLE TRANSITION (GVE.JAIKE3):
- HOPEWELL TRANSITION (HPW.JAIKE3):
- PATUXENT TRANSITION (PXT.JAIKE3):
- RICHMOND TRANSITION (RIC.JAIKE3):

From JAIKE WP on track 047° to ILENE WP, then on track 048° to WACKI WP, then on track 048° to MAZIE WP, then on track 059° to REGLE WP, then on track 059° to SBJ VOR/DME, then on heading 059°. Expect radar vectors.

NOTE: Chart not to scale.

# JAIKE THREE ARRIVAL (RNAV)

TETERBORO, NEW JERSEY

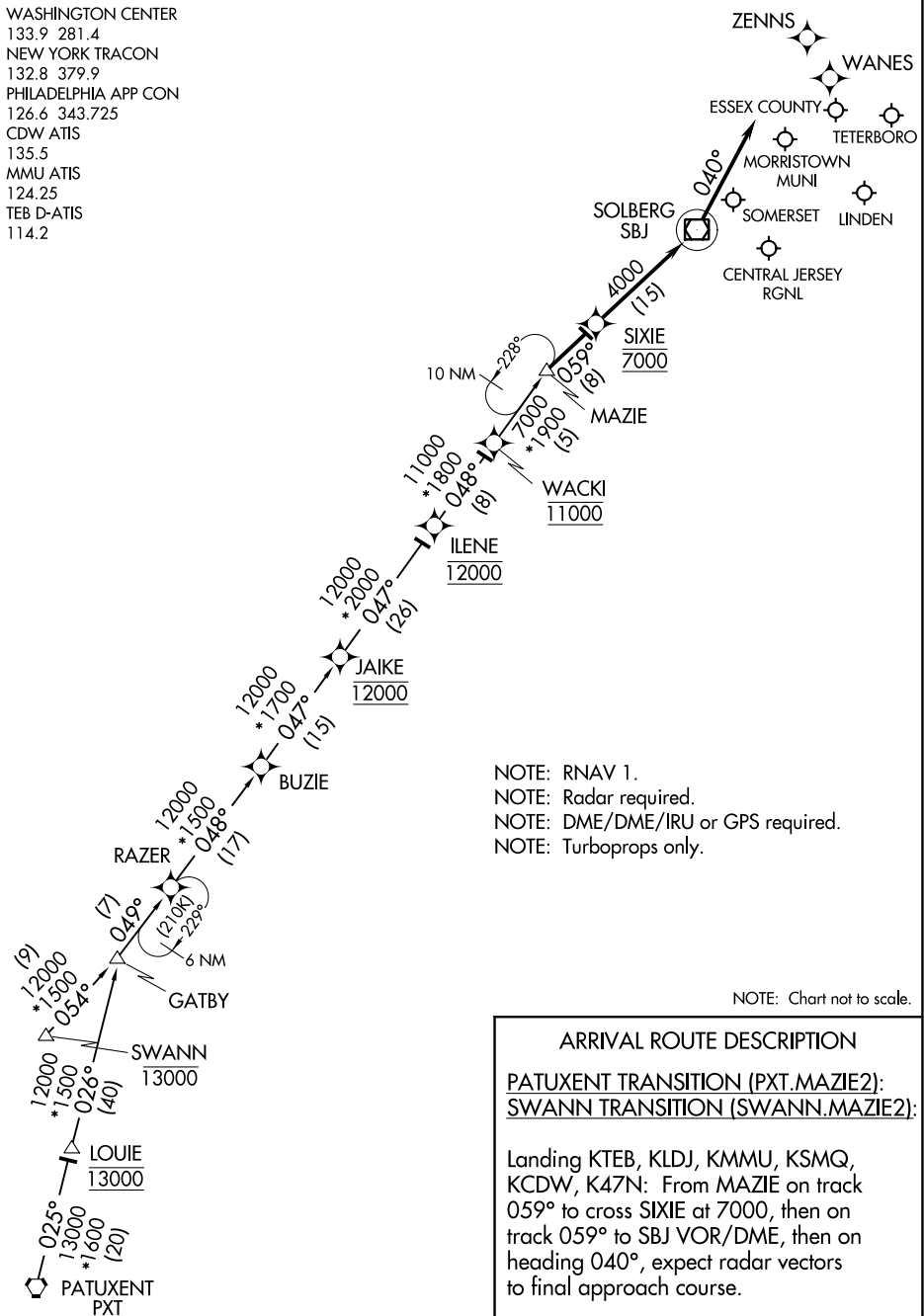
NE-2, 13 AUG 2020 to 10 SEP 2020

NE-2, 13 AUG 2020 to 10 SEP 2020

# MAZIE TWO ARRIVAL (RNAV)

TETERBORO, NEW JERSEY

WASHINGTON CENTER  
 133.9 281.4  
 NEW YORK TRACON  
 132.8 379.9  
 PHILADELPHIA APP CON  
 126.6 343.725  
 CDW ATIS  
 135.5  
 MMU ATIS  
 124.25  
 TEB D-ATIS  
 114.2



NOTE: RNAV 1.  
 NOTE: Radar required.  
 NOTE: DME/DME/IRU or GPS required.  
 NOTE: Turboprops only.

NOTE: Chart not to scale.

**ARRIVAL ROUTE DESCRIPTION**  
PATUXENT TRANSITION (PXT.MAZIE2):  
SWANN TRANSITION (SWANN.MAZIE2):  
 Landing KTEB, KLDJ, KMMU, KSMQ, KCDW, K47N: From MAZIE on track 059° to cross SIXIE at 7000, then on track 059° to SBJ VOR/DME, then on heading 040°, expect radar vectors to final approach course.

NE-2, 13 AUG 2020 to 10 SEP 2020

NE-2, 13 AUG 2020 to 10 SEP 2020

# MAZIE TWO ARRIVAL (RNAV)

TETERBORO, NEW JERSEY

WILKES-BARRE FOUR ARRIVAL  
(LVZ.LVZ4) 200CT11

WILKES-BARRE FOUR ARRIVAL  
(LVZ.LVZ4) 20198

AL-890 (FAA)

TETERBORO, NEW JERSEY

NEW YORK APP CON  
127.6 379.9  
EW R D-ATIS  
115.7

JAMESTOWN  
114.7 JHW :---  
Chan 94  
N42°11.32'-W79°07.28'  
L-30, H-10

ELMIRA  
109.65 ULW :---  
Chan 33 (Y)

DMACK  
N41°47.15'  
W77°33.12'

WILKES-BARRE  
111.6 LVZ :---  
Chan 53  
N41°16.37'-W75°41.37'  
Expect FL180

HUGUENOT  
116.1 HUO :---  
Chan 108

HOXIE  
N41°51.90'  
W77°51.16'

SPARTA  
115.7 SAX :---  
Chan 104

SLATE RUN  
113.9 SLT :---  
Chan 86

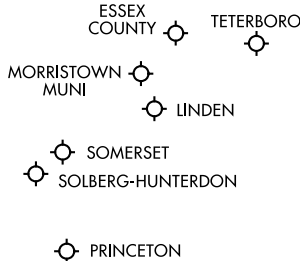
STENT  
N41°40.74'  
W77°09.17'

STILLWATER  
109.6 STW :---  
Chan 33  
N40°59.75'-W74°52.14'

HARTY  
N41°04.27'  
W75°05.39'

MUGZY  
N41°01.81'  
W74°58.16'  
Expect 6000

ALLENTOWN  
117.5 FJC :---  
Chan 122



NOTE: This STAR applicable to all aircraft capable of 250 KIAS or greater landing at Teterboro, Morristown Muni, Essex County, Princeton, Solberg-Hunterdon, Linden, and Somerset.  
NOTE: Advise ATC prior to speed reduction below 250 Knots.

ARRIVAL ROUTE DESCRIPTION

JAMESTOWN TRANSITION (JHW.LVZ4): From over JHW VOR/DME on JHW R-115 and LVZ R-301 to LVZ VORTAC. Thence . . . .

. . . . from over LVZ VORTAC, on LVZ R-124 and STW R-305 to STW VOR/DME. Expect radar vectors to final approach course.

NOTE: Chart not to scale.

TETERBORO, NEW JERSEY