

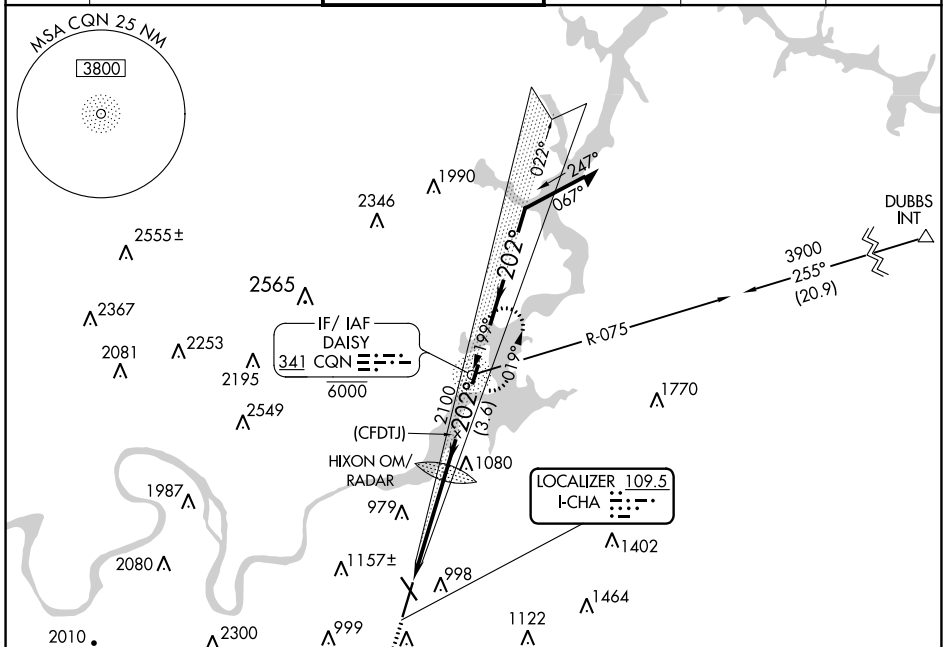
LOC I-CHA <b>109.5</b>	APP CRS <b>202°</b>	Rwy Idg TDZE Apt Elev	<b>7400</b> <b>673</b> <b>683</b>
---------------------------	------------------------	-----------------------------	---

# ILS RWY 20 (CAT II)

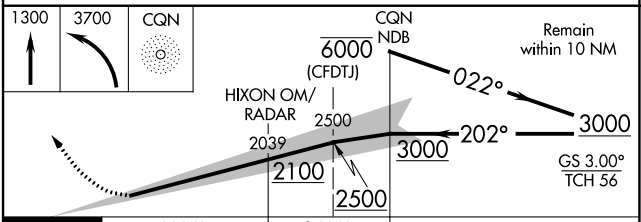
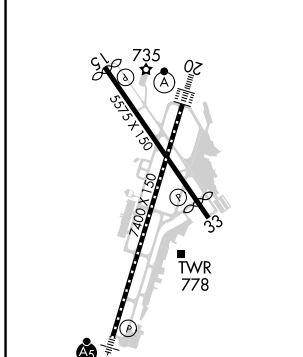
LOVELL FLD (CHA)

ADF required.	ALSIF-2	MISSED APPROACH: Climb to 1300 then climbing left turn to 3700 direct CQN NDB and hold, continue climb-in-hold to 3700.
Procedure NA when tower closed. Disregard inner marker indication.		

ATIS <b>119.85</b>	CHATTANOOGA APP CON * <b>125.1 379.1</b>	CHATTANOOGA TOWER * <b>118.3 (CTAF) 0 257.8</b>	GND CON <b>121.7 348.6</b>	CLNC DEL <b>120.95 348.6</b>	UNICOM <b>122.95</b>
-----------------------	---	--	-------------------------------	---------------------------------	-------------------------



ELEV 683	<b>D</b>	TDZE 673
----------	----------	----------



CATEGORY	A	B	C	D
S-ILS 20	RA 103/12 100 DA 773			

**CATEGORY II ILS - SPECIAL AIRCREW & AIRCRAFT CERTIFICATION REQUIRED**

SE-1, 22 FEB 2024 to 21 MAR 2024

SE-1, 22 FEB 2024 to 21 MAR 2024

LOC I-CGW <b>108.3</b>	APP CRS <b>022°</b>	Rwy Idg TDZE Apt Elev	<b>7100</b> <b>683</b> <b>683</b>
---------------------------	------------------------	-----------------------------	---

# ILS or LOC RWY 2

LOVELL FLD (CHA)

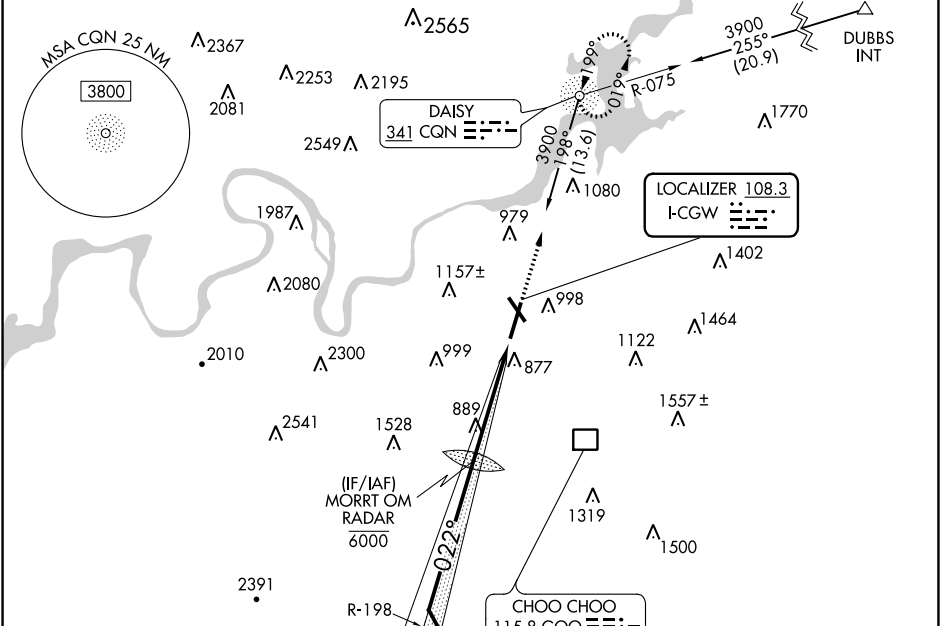
ADF required. RADAR required for procedure entry.

**V**  
**A** Circling Rwy 15, 33 NA at night.

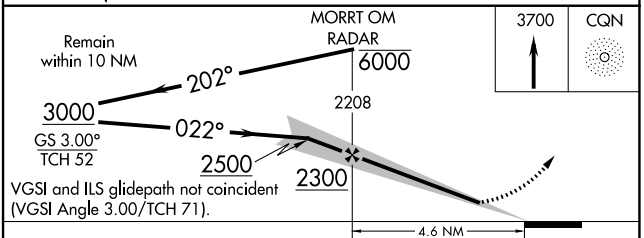
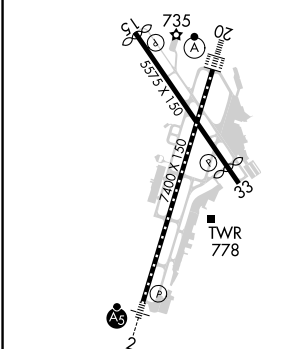


MISSED APPROACH: Climb to 3700 direct CGN NDB and hold, continue climb-in-hold to 3700.

ATIS <b>119.85</b>	CHATTANOOGA APP CON ★ <b>125.1 379.1</b>	CHATTANOOGA TOWER ★ <b>118.3 (CTAF) 257.8</b>	GND CON <b>121.7 348.6</b>	CLNC DEL <b>120.95 348.6</b>	UNICOM <b>122.95</b>
-----------------------	---	--	-------------------------------	---------------------------------	-------------------------



ELEV 683	<b>D</b>	TDZE 683
----------	----------	----------



CATEGORY	A	B	C	D
S-ILS 2	883/24		200 (200-½)	
S-LOC 2	1140/24	457 (500-½)	1140/45	457 (500-¾)
<input checked="" type="checkbox"/> CIRCLING	1300-1 617 (700-1)	1340-1 657 (700-1)	1500-2½ 817 (900-2½)	1580-3 897 (900-3)

SE-1, 22 FEB 2024 to 21 MAR 2024

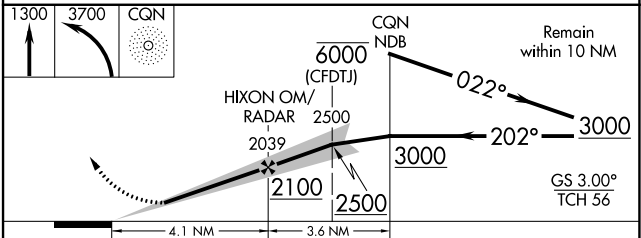
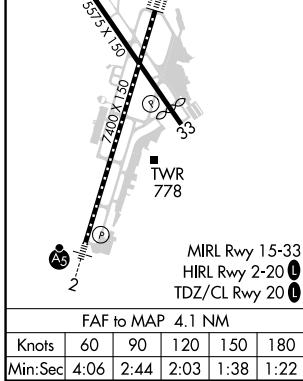
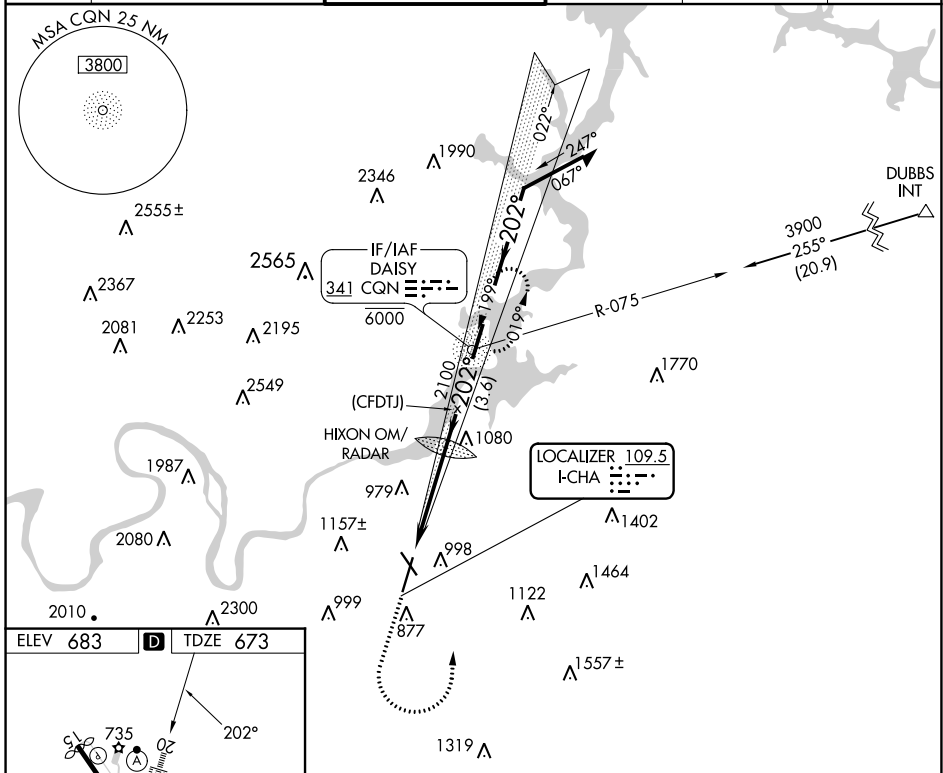
SE-1, 22 FEB 2024 to 21 MAR 2024

LOC I-CHA <b>109.5</b>	APP CRS <b>202°</b>	Rwy Idg TDZE Apt Elev	<b>7400</b> <b>673</b> <b>683</b>
---------------------------	------------------------	-----------------------------	---

# ILS or LOC RWY 20

LOVELL FLD (CHA)

ADF required.		ALSF-2 	MISSED APPROACH: Climb to 1300 then climbing left turn to 3700 direct CQN NDB and hold, continue climb-in-hold to 3700.		
Disregard inner marker indication. Circling to Rwy 15, 33 NA at night.					
ATIS <b>119.85</b>	CHATTANOOGA APP CON * <b>125.1 379.1</b>	CHATTANOOGA TOWER * <b>118.3 (CTAF) 257.8</b>	GND CON <b>121.7 348.6</b>	CLNC DEL <b>120.95 348.6</b>	UNICOM <b>122.95</b>



CATEGORY	A	B	C	D
S-ILS 20	873/18		200 (200-1/2)	
S-LOC 20	1320/24	647 (700-1/2)	1320-1 3/8	647 (700-1 3/8)
<input checked="" type="checkbox"/> CIRCLING	1320-1 637 (700-1)	1340-1 657 (700-1)	1500-2 1/2 817 (900-2 1/2)	1580-3 897 (900-3)

SE-1, 22 FEB 2024 to 21 MAR 2024

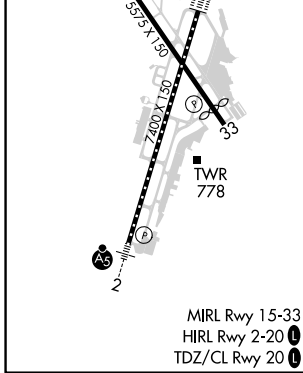
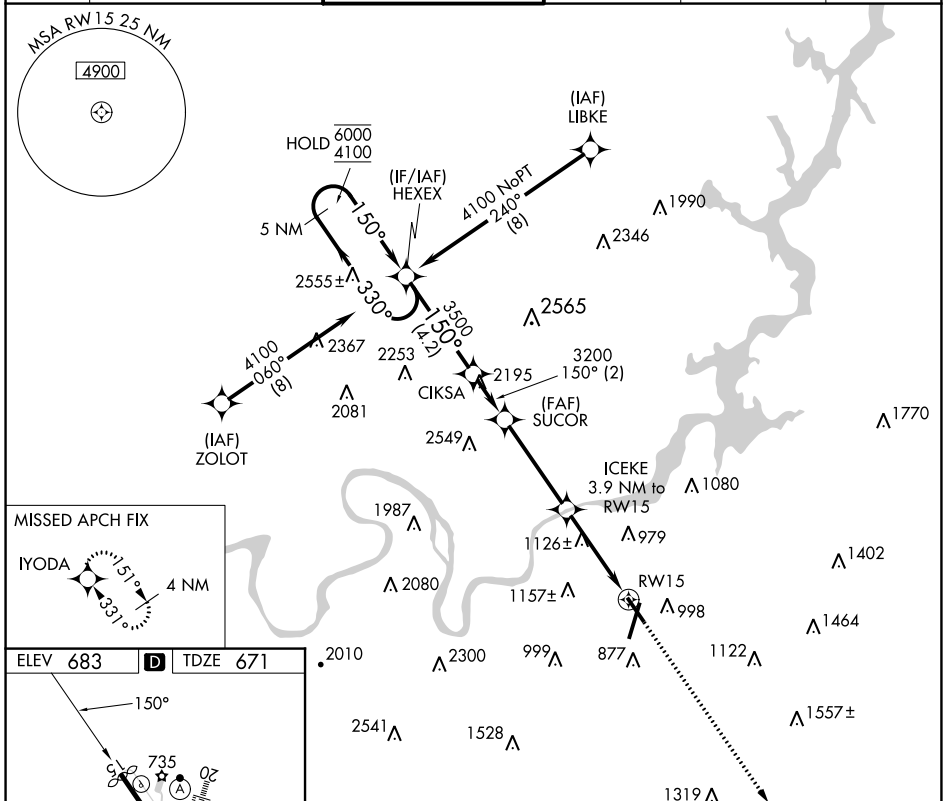
SE-1, 22 FEB 2024 to 21 MAR 2024

APP CRS	Rwy Idg	<b>5469</b>
<b>150°</b>	TDZE	<b>671</b>
	Apt Elev	<b>683</b>

# RNAV (GPS) RWY 15

LOVELL FLD (CHA)

RNP APCH - GPS.		MISSED APPROACH: Climb to 3300 direct IYODA and hold.			
Straight-In Rwy 15 NA at night, Circling Rwy 15, 33 NA at night. Rwy 15 helicopter visibility reduction below 1 SM NA.					
ATIS	CHATTANOOGA APP CON *	CHATTANOOGA TOWER *	GND CON	CLNC DEL	UNICOM
<b>119.85</b>	<b>125.1 379.1</b>	<b>118.3 (CTAF) 257.8</b>	<b>121.7 348.6</b>	<b>120.95 348.6</b>	<b>122.95</b>



5 NM Holding Pattern		HEXEX	CIKSA	SUCOR	ICEKE	IYODA
6000	← 330°	→ 150°	150°	3200	3.9 NM to RWY 15	↑
4100				3.00° TCH 45	1960	✧
		4.2 NM	2 NM	3.9 NM	3.9 NM	
CATEGORY	A	B	C	D		
LNAV MDA	1380-1	709 (700-1)	1380-2	709 (700-2)		
CIRCLING	1380-1	697 (700-1)	1480-2¼ 797 (800-2¼)	1580-3 897 (900-3)		

SE-1, 22 FEB 2024 to 21 MAR 2024

SE-1, 22 FEB 2024 to 21 MAR 2024

WAAS CH <b>65605</b> <b>W02A</b>	APP CRS <b>022°</b>	Rwy Idg TDZE Apt Elev	<b>7100</b> <b>683</b> <b>683</b>
--	------------------------	-----------------------------	---

# RNAV (GPS) RWY 2

LOVELL FLD (CHA)

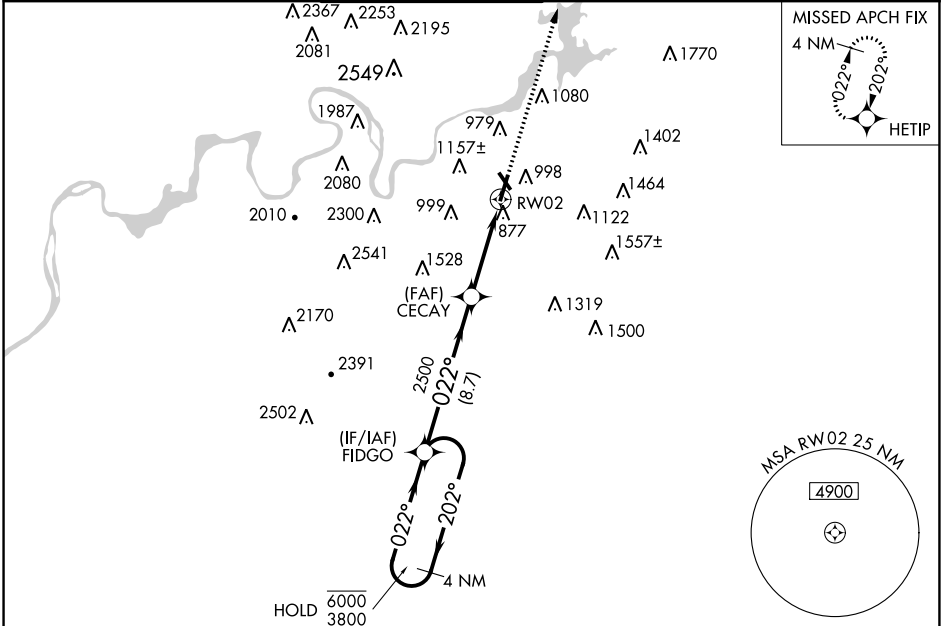
RNP APCH - GPS.

**⚠** Circling Rwy 15, 33 NA at night. For uncompensated Baro-VNAV systems, LNAV/VNAV NA below -16°C or above 54°C. For inop ALS, increase LNAV/VNAV all Cats visibility to 1½ SM. \*\*RVR 1800 authorized with use of FD or AP or HUD to DA.



MISSED APPROACH:  
Climb to 3900 direct  
HETIP and hold, continue  
climb-in-hold to 3900.

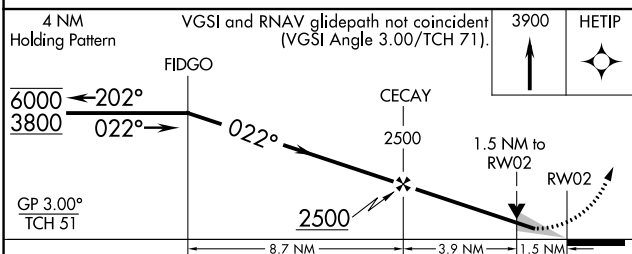
ATIS <b>119.85</b>	CHATTANOOGA APP CON * <b>125.1 379.1</b>	CHATTANOOGA TOWER * <b>118.3 (CTAF) 257.8</b>	GND CON <b>121.7 348.6</b>	CLNC DEL <b>120.95 348.6</b>	UNICOM <b>122.95</b>
-----------------------	---	--	-------------------------------	---------------------------------	-------------------------



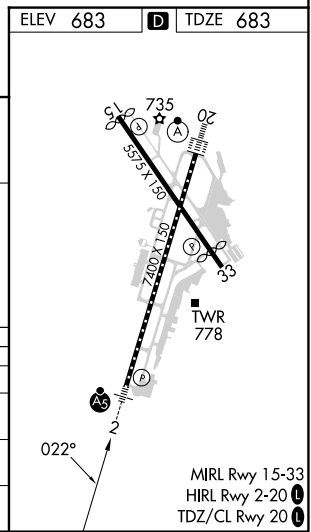
SE-1, 22 FEB 2024 to 21 MAR 2024

SE-1, 22 FEB 2024 to 21 MAR 2024

ELEV 683	<b>D</b> TDZE 683
----------	-------------------



CATEGORY	A	B	C	D
LPV DA**		883/24	200 (200-½)	
LNAV/VNAV DA		1197/55	514 (600-1)	
LNAV MDA	1240/24	557 (600-½)	1240/60	557 (600-1¼)
<b>C</b> CIRCLING	1300-1 617 (700-1)	1340-1 657 (700-1)	1500-2½ 817 (900-2½)	1580-3 897 (900-3)



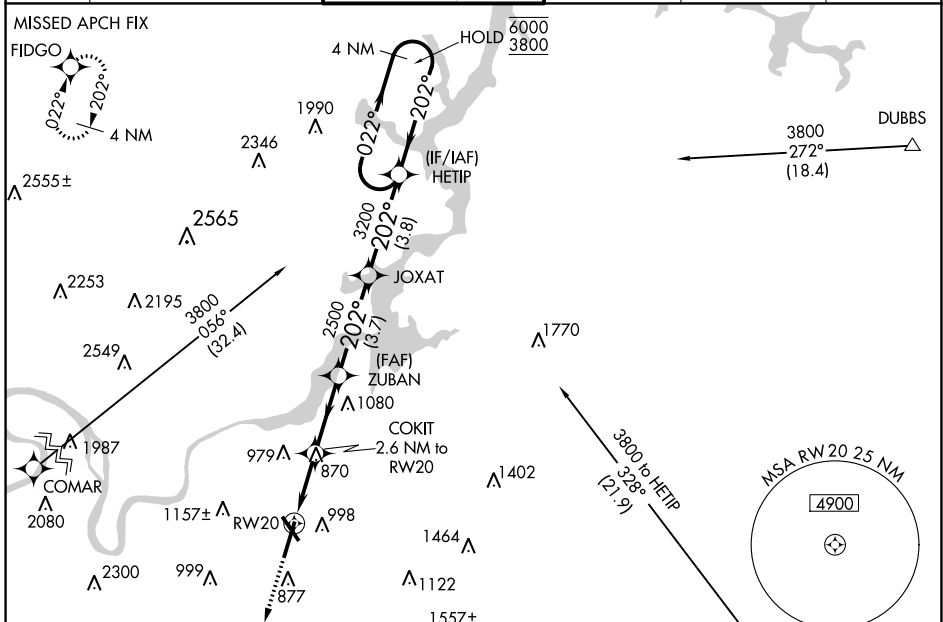
WAAS CH <b>70305</b> <b>W20A</b>	APP CRS <b>202°</b>	Rwy Idg TDZE Apt Elev	<b>7400</b> <b>673</b> <b>683</b>
--	------------------------	-----------------------------	---

# RNAV (GPS) RWY 20

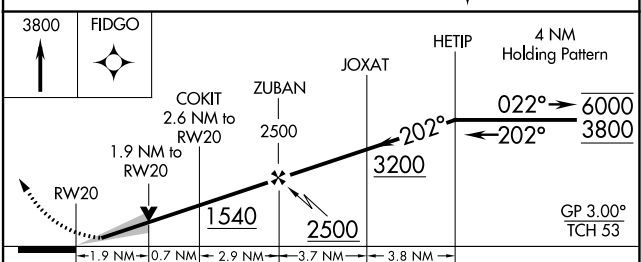
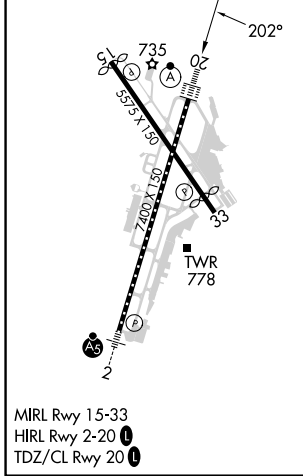
LOVELL FLD (CHA)

RNP APCH - GPS.	<p><b>⚠</b> Circling Rwy 15, 33 NA at night. For uncompensated Baro-VNAV systems, LNAV/VNAV NA below -16°C or above 54°C. For inop ALS, increase LNAV/VNAV all Cats visibility to 1¾ SM and LNAV Cat C and D visibility to 1½ SM.</p>	<p>ALS-2</p>	<p>MISSED APPROACH: Climb to 3800 direct FIDGO and hold.</p>
-----------------	---	--------------	--

ATIS <b>119.85</b>	CHATTANOOGA APP CON * <b>125.1 379.1</b>	CHATTANOOGA TOWER * <b>118.3 (CTAF) 0 257.8</b>	GND CON <b>121.7 348.6</b>	CLNC DEL <b>120.95 348.6</b>	UNICOM <b>122.95</b>
-----------------------	---	--	-------------------------------	---------------------------------	-------------------------



ELEV 683	<b>D</b>	TDZE 673
----------	----------	----------



CATEGORY	A	B	C	D
LPV DA	873/18		200 (200-½)	
LNAV/VNAV DA	1281-1¾		608 (600-1¾)	
LNAV MDA	1340/24	667 (700-½)	1340-1½	667 (700-1½)
<b>C</b> CIRCLING	1340-1	657 (700-1)	1500-2½ 817 (900-2½)	1580-3 897 (900-3)

SE-1, 22 FEB 2024 to 21 MAR 2024

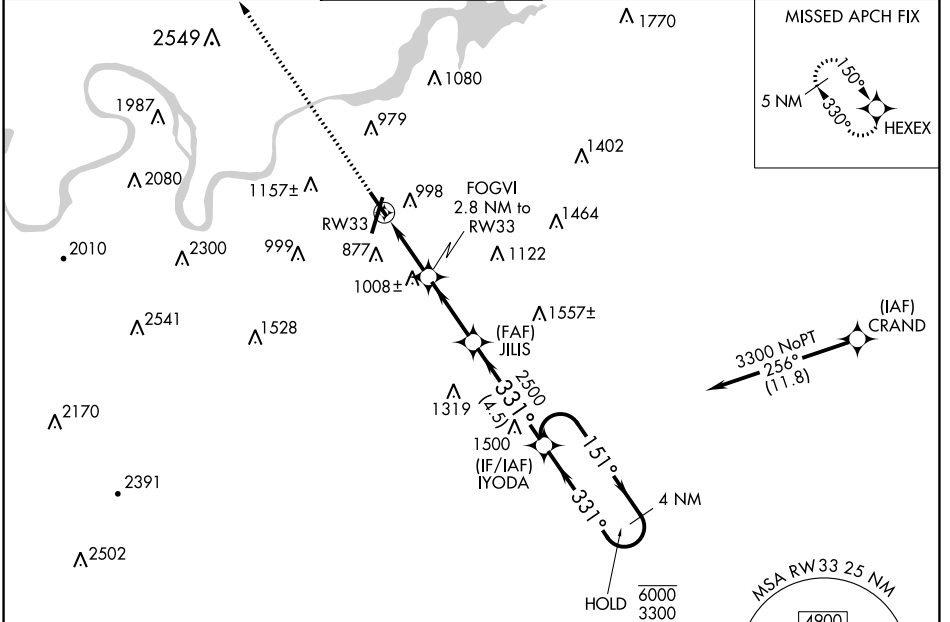
SE-1, 22 FEB 2024 to 21 MAR 2024

APP CRS <b>331°</b>	Rwy Idg TDZE Apt Elev	<b>5000</b> <b>672</b> <b>683</b>
------------------------	-----------------------------	---

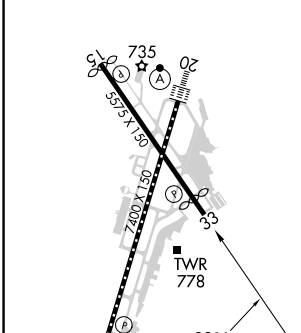
# RNAV (GPS) RWY 33

LOVELL FLD (CHA)

RNP APCH - GPS.		MISSED APPROACH: Climb to 4100 direct HEXEX and hold. * Missed approach requires minimum climb of 235 feet per NM to 3000.					
Straight-In Rwy 33 NA at night, Circling Rwy 15, 33 NA at night. Rwy 33 helicopter visibility reduction below 1 SM NA.		ATIS <b>119.85</b>	CHATTANOOGA APP CON ★ <b>125.1 379.1</b>	CHATTANOOGA TOWER ★ <b>118.3 (CTAF) 257.8</b>	GND CON <b>121.7 348.6</b>	CLNC DEL <b>120.95 348.6</b>	UNICOM <b>122.95</b>



ELEV 683	<b>D</b>	TDZE 672
----------	----------	----------



4100 HEXEX 	FOGVI 2.8 NM to RW33 RW33 1600 $\leq 3.00^\circ$ TCH 40 2.8 NM   2.8 NM   4.5 NM		JILIS 2500 IYODA 4 NM Holding Pattern 151° → 6000 ← 331° 3300	
	CATEGORY LNAV MDA* LNAV MDA <b>C</b> CIRCLING	A	B	C
	1260-1	588 (600-1)	1260-1¾	588 (600-1¾)
	1520-1 848 (900-1)	1520-1¼ 848 (900-1¼)	1520-2½	848 (900-2½)
	1520-1¼	837 (900-1¼)	1520-2½ 837 (900-2½)	1580-3 897 (900-3)

SE-1, 22 FEB 2024 to 21 MAR 2024

SE-1, 22 FEB 2024 to 21 MAR 2024