

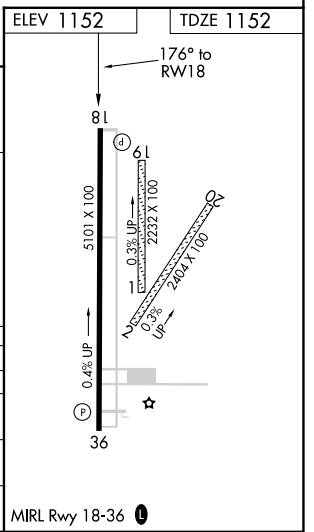
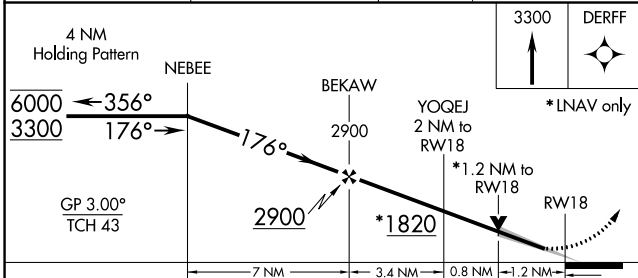
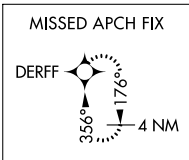
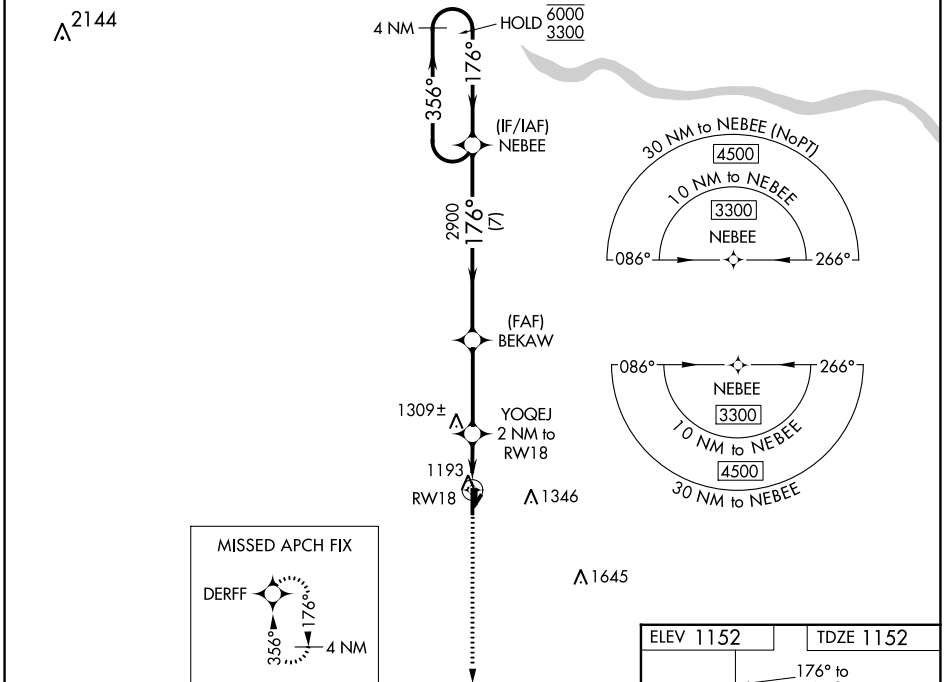
WAAS CH 70430 W18A	APP CRS 176°	Rwy Idg TDZE Apt Elev	5101 1152 1152
--	------------------------	-----------------------------	---

RNAV (GPS) RWY 18

CHICKASHA MUNI (CHK)

RNP APCH. ▼ Circling NA to Rwys 1, 2, 19 and 20. For uncompensated Baro-VNAV systems, LNAV/VNAV NA below -17°C or above 54°C.	MISSED APPROACH: Climb to 3300 direct DERFF and hold.
---	---

AWOS-3 118.175	OKE CITY APP CON 124.6 266.8	UNICOM 123.0 (CTAF) 0
--------------------------	--	---------------------------------



CATEGORY	A	B	C	D
LPV DA	1352-3/4	200 (200-3/4)		NA
LNAV/VNAV DA	1482-1 1/8	330 (400-1 1/8)		NA
LNAV MDA	1560-1	408 (500-1)	1560-1 1/8 408 (500-1 1/8)	NA
CIRCLING	1600-1 448 (500-1)	1620-1 468 (500-1)	1700-1 1/2 548 (600-1 1/2)	NA

SC-1, 22 FEB 2024 to 21 MAR 2024

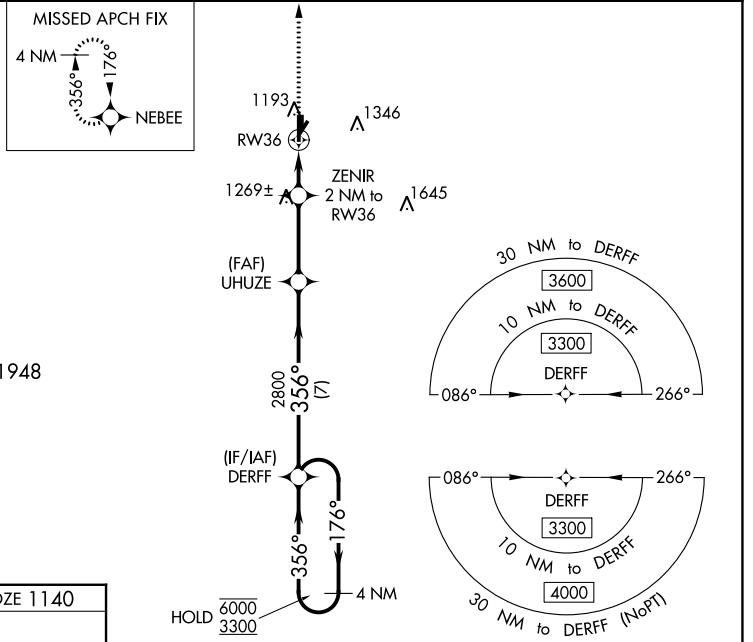
SC-1, 22 FEB 2024 to 21 MAR 2024

WAAS CH 48930 W36A	APP CRS 356°	Rwy Idg TDZE 1140 Apt Elev 1152	5101
--	------------------------	---	-------------

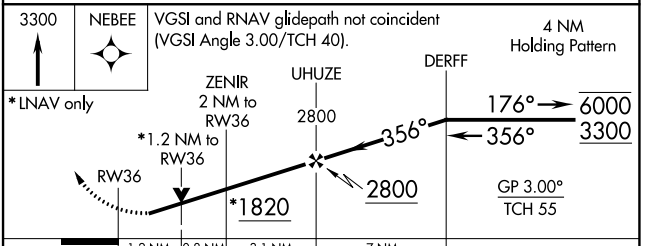
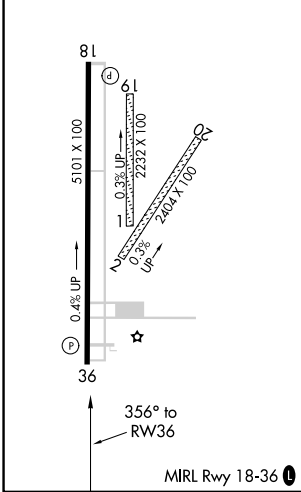
RNAV (GPS) RWY 36

CHICKASHA MUNI (CHK)

RNP APCH. ▼ Circling NA to Rwy 1, 2, 19 and 20. Rwy 36 helicopter visibility reduction below ¾ SM NA. For uncompensated Baro-VNAV systems, LNAV/VNAV NA below -17°C or above 54°C.		MISSED APPROACH: Climb to 3300 direct NEBEE and hold.
AWOS-3 118,175	OKE CITY APP CON 124.6 266.8	UNICOM 123.0 (CTAF) 0



ELEV 1152	TDZE 1140
-----------	-----------



CATEGORY	A	B	C	D
LPV DA	1390-¾	250 (300-¾)		NA
LNAV/VNAV DA	1450-1	310 (300-1)		NA
LNAV MDA	1580-1	440 (500-1)	1580-1¼ 440 (500-1¼)	NA
CIRCLING	1600-1 448 (500-1)	1620-1 468 (500-1)	1700-1½ 548 (600-1½)	NA

SC-1, 22 FEB 2024 to 21 MAR 2024

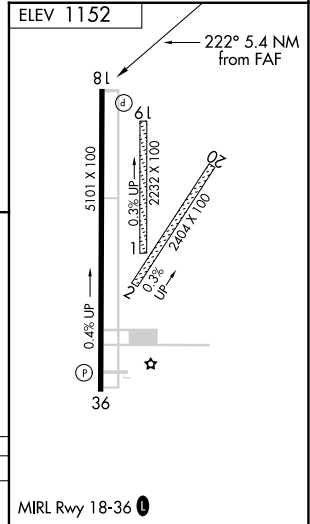
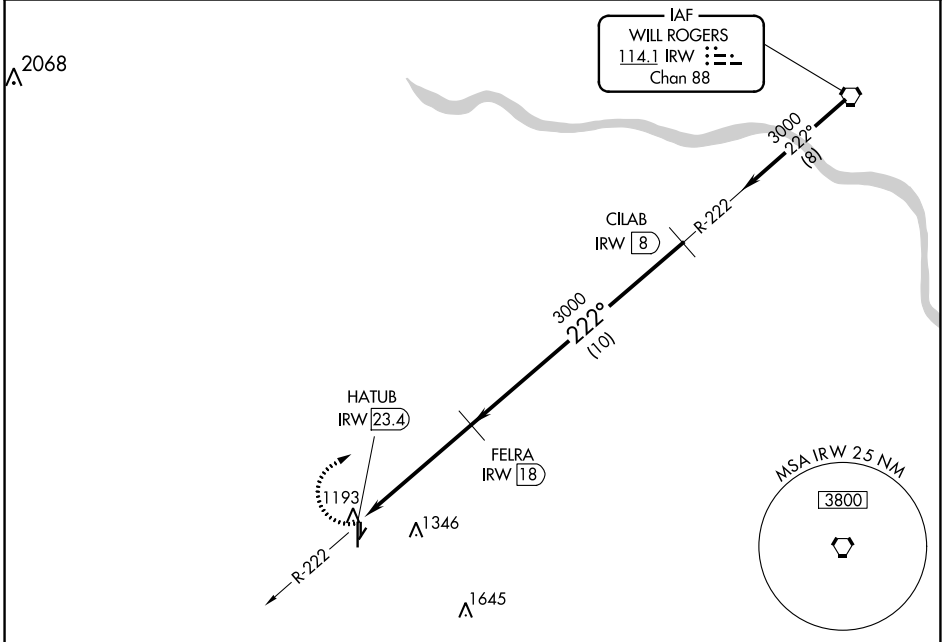
SC-1, 22 FEB 2024 to 21 MAR 2024

VORTAC IRW 114.1 Chan 88	APP CRS 222°	Rwy Idg TDZE Apt Elev	N/A N/A 1152
--	------------------------	-----------------------------	---

VOR/DME-A
CHICKASHA MUNI (CHK)

▽ If local altimeter not received; use Oklahoma City/Will Rogers World altimeter setting and increase all MDAs 80 feet. Circling NA to Rwys 1, 2, 19 and 20.
▲ NA MISSED APPROACH: Climbing right turn to 3000 direct IRW VORTAC.

AWOS-3 118.175	OKE CITY APP CON 124.6 266.8	UNICOM 123.0 (CTAF) 0
--------------------------	--	---------------------------------



3000	IRW	FELRA IRW 18	CILAB IRW 8
HATUB IRW 23.4			
5.4 NM		10 NM	
CATEGORY	A	B	C
0 CIRCLING	1660-1 508 (600-1)	1660-1¼ 508 (600-1¼)	1700-1½ 548 (600-1½)
			NA

SC-1, 22 FEB 2024 to 21 MAR 2024

SC-1, 22 FEB 2024 to 21 MAR 2024