

NDB CPC	APP CRS	Rwy Idg	5500
227	059°	TDZE	99
		Apt Elev	99

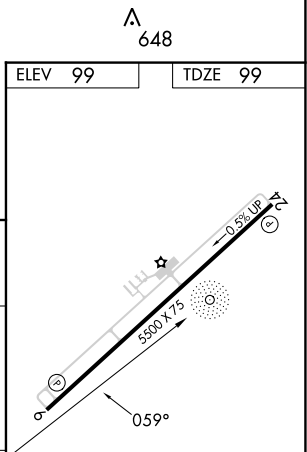
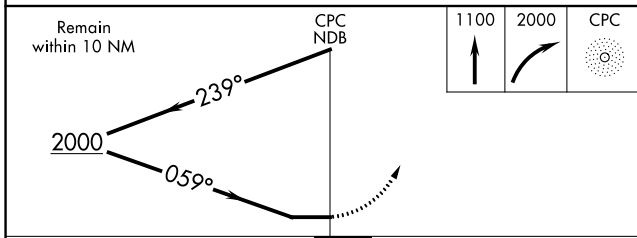
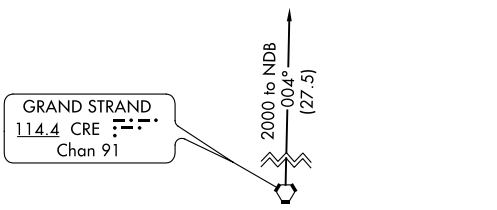
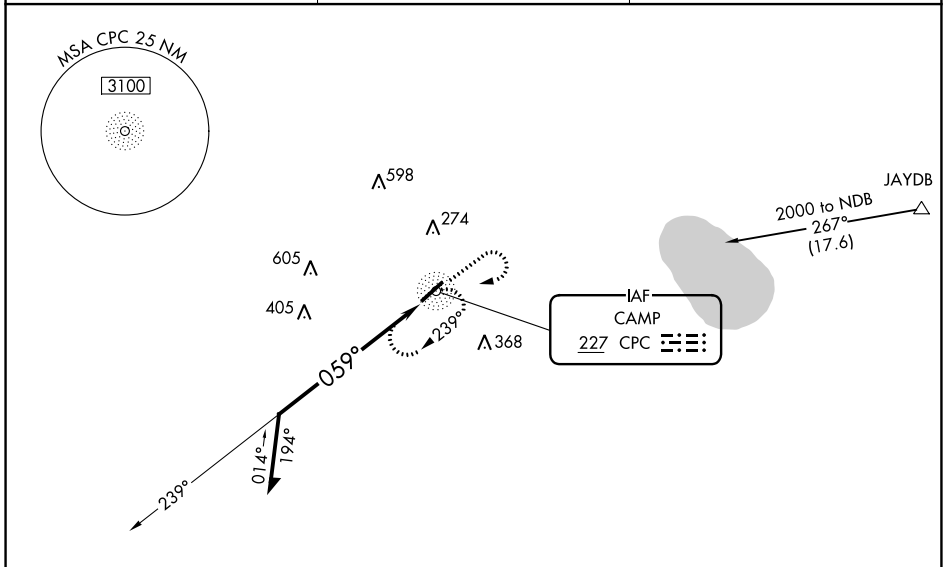
NDB RWY 6

COLUMBUS COUNTY MUNI (CPC)

⚠ Rwy 6 helicopter visibility reduction below 3/4 SM NA.
⚠ When local altimeter setting not received, use Elizabethtown altimeter setting and increase all MDA 60 feet, increase S-6 Cat C/D and Circling Cat C visibility 1/8 SM and Circling Cat D visibility 1/4 SM.

MISSED APPROACH: Climb to 1100 then climbing right turn to 2000 direct CPC NDB and hold, continue climb-in-hold to 2000.

AWOS-3 118.375	MYRTLE BEACH APP CON ★ 119.2 350.3	UNICOM 122.8 (CTAF) ①
--------------------------	--	---------------------------------



CATEGORY	A	B	C	D
S-6	680-1	581 (600-1)	680-1 3/4	581 (600-1 3/4)
C CIRCLING	680-1	581 (600-1)	680-1 3/4 581 (600-1 3/4)	780-2 1/4 681 (700-2 1/4)

REIL Rws 6 and 24 ①
 MIRL Rwy 6-24 ①

SE-2, 22 FEB 2024 to 21 MAR 2024

SE-2, 22 FEB 2024 to 21 MAR 2024

WAAS CH 86638 W24A	APP CRS 235°	Rwy Idg 5500 TDZE 86 Apt Elev 99
--	------------------------	---

RNAV (GPS) RWY 24

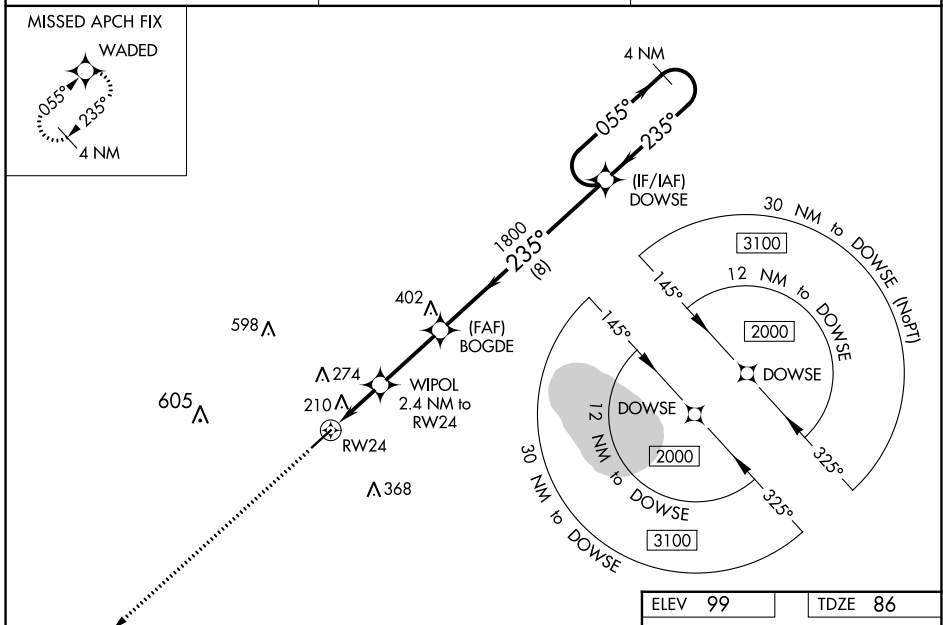
COLUMBUS COUNTY MUNI (CPC)

RNP APCH.

▼ For uncompensated Baro-VNAV systems, LNAV/VNAV NA below -15°C (5°F) or above 54°C (130°F). Baro-VNAV and VDP NA when using Elizabethtown altimeter setting.
 ▲ Helicopter visibility reduction below ¾ SM NA. When local altimeter setting not received, use Elizabethtown altimeter setting and increase LPV DA to 427 feet, LNAV/VNAV DA to 441 feet and all visibilities ¼ mile. Increase all MDA 60 feet and all Cat C and D visibilities ¼ mile.

MISSED APPROACH:
Climb to 2000 direct
WADED and hold.

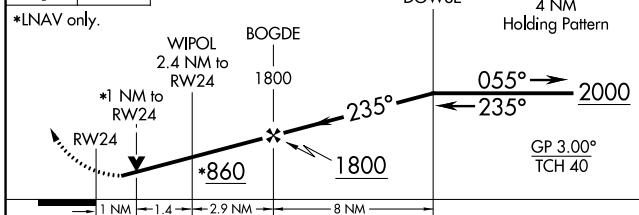
AWOS-3 118.375	MYRTLE BEACH APP CON * 119.2 350.3	UNICOM 122.8 (CTAF) 0
--------------------------	--	---------------------------------



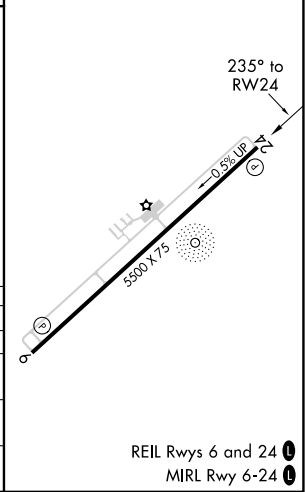
SE-2, 22 FEB 2024 to 21 MAR 2024

SE-2, 22 FEB 2024 to 21 MAR 2024

2000	WADED	VGSI and RNAV glidepath not coincident (VGSI Angle 3.25/TCH 42).
------	-------	--



ELEV 99	TDZE 86
---------	---------



CATEGORY	A	B	C	D
LPV DA		374-1	288 (300-1)	
LNAV/VNAV DA		388-1½	302 (300-1½)	
LNAV MDA		460-1	374 (400-1)	
CIRCLING	520-1	580-1	680-1½	780-2¼
	421 (500-1)	481 (500-1)	581 (600-1½)	681 (700-2¼)

REIL Rws 6 and 24 0
MIRL Rwy 6-24 0

APP CRS	Rwy Idg	5500
055°	TDZE	99
	Apt Elev	99

RNAV (GPS) RWY 6

COLUMBUS COUNTY MUNI (CPC)

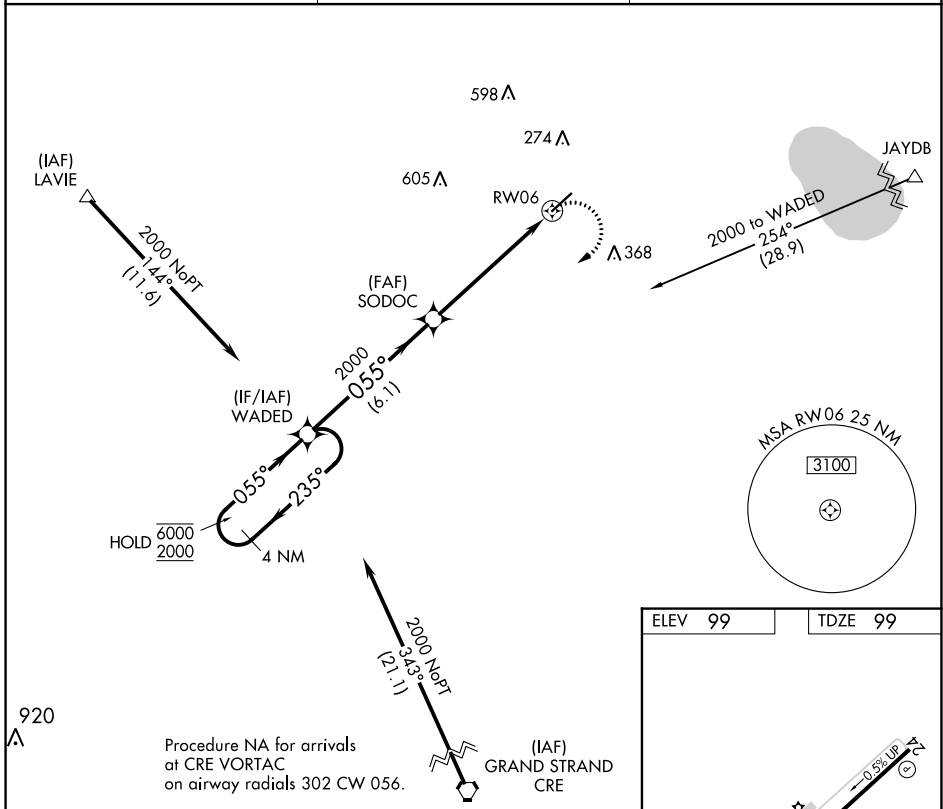
RNP APCH.

⚠ VDP NA when using Elizabethtown altimeter setting. Rwy 6 helicopter visibility reduction below 3/4 SM NA. When local altimeter setting not received, use Elizabethtown altimeter setting and increase all MDA 60 feet, LNAV Cat C/D visibility 1/8 SM.

MISSED APPROACH: Climbing right turn to 2000 direct WADED and hold.

AWOS-3	MYRTLE BEACH APP CON *
118.375	119.2 350.3

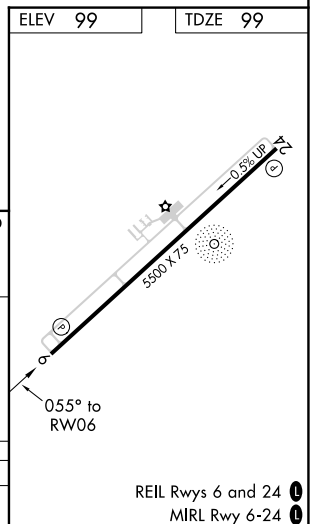
UNICOM
122.8 (CTAF) 1



SE-2, 22 FEB 2024 to 21 MAR 2024

SE-2, 22 FEB 2024 to 21 MAR 2024

4 NM Holding Pattern	WADED	SODOC	2000 WADED	
6000 ← 235°	→ 055°	→ 055°	1.3 NM to RWY 06	
2000 → 055°	→ 055°	→ 055°	3.05° TCH 40	
6.1 NM		4.4 NM	1.3	
CATEGORY	A	B	C	D
LNAV MDA	560-1	461 (500-1)	560-1 3/8	461 (500-1 3/8)



REIL Rwy 6 and 24 1
MIRL Rwy 6-24 1