


LOC I-UUR 111.1	APP CRS 176°	Rwy Idg TDZE Apt Elev	6500 414 425
---------------------------	------------------------	-----------------------------	---

ILS or LOC RWY 18

ROSCOE TURNER (CRX)

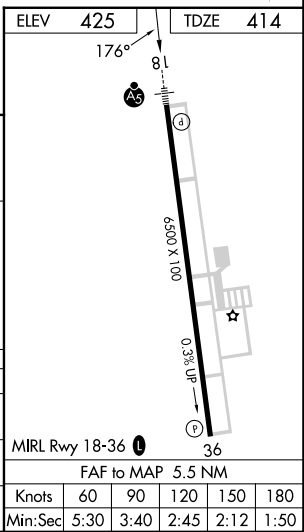
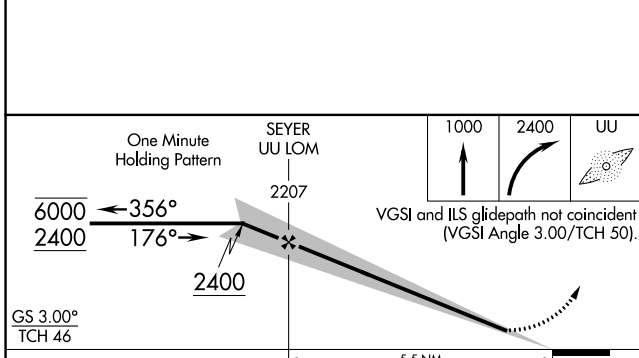
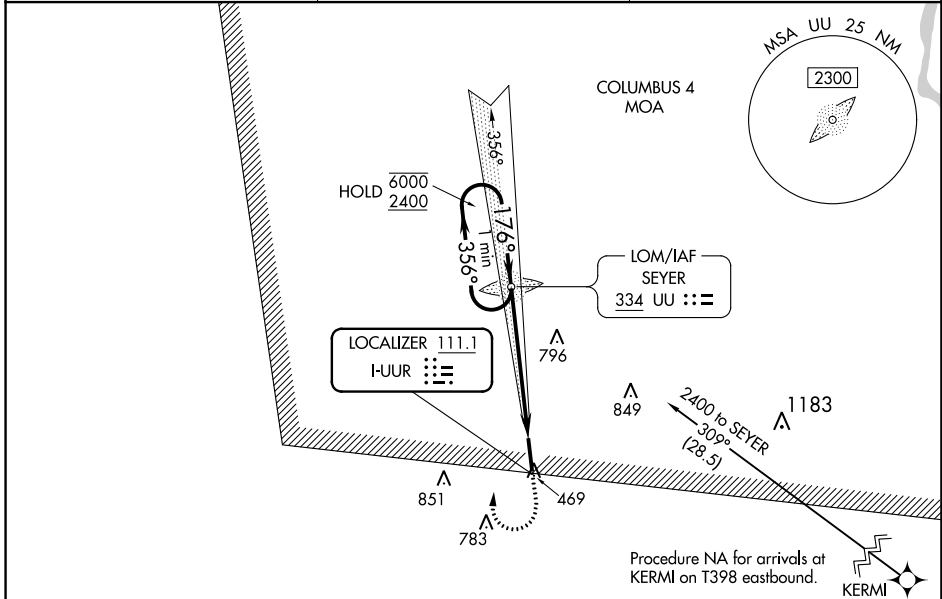
ADF required. RNAV 1-GPS.

⚠ Autopilot coupled approach NA below 1040.
For inop ALS, increase S-LOC 18 Cats C and D visibility to 1¼ SM.

MALSR 

MISSED APPROACH: Climb to 1000 then climbing right turn to 2400 direct UU LOM and hold, continue climb-in-hold to 2400.

AWOS-3PT 118.675	MEMPHIS CENTER 135.9 273.55	UNICOM 122.8 (CTAF) 1
----------------------------	---------------------------------------	---------------------------------



CATEGORY	A	B	C	D
S-ILS 18	614-½		200 (200-½)	
S-LOC 18	1020-½	606 (600-½)	1020-1¾	606 (600-1¾)
C CIRCLING	1020-1	595 (600-1)	1100-2 675 (700-2)	1160-2¼ 735 (800-2¼)

SC-4, 22 FEB 2024 to 21 MAR 2024

SC-4, 22 FEB 2024 to 21 MAR 2024

WAAS CH 72806 W18A	APP CRS 176°	Rwy Idg TDZE Apt Elev	6500 414 425
---------------------------------	------------------------	-----------------------------	---

RNAV (GPS) RWY 18

ROSCOE TURNER (CRX)

RNP APCH-GPS.

Baro-VNAV NA when using Selmer altimeter setting. For uncompensated Baro-VNAV systems, LNAV/VNAV NA below -15°C or above 54°C. VDP NA when using Selmer altimeter setting. When local altimeter setting not received, use Selmer altimeter setting and increase LPV DA to 682 feet, increase LNAV/VNAV DA to 812 feet and all visibilities ½ SM; increase all MDAs 80 feet and LNAV visibility Cats C and D ¾ SM and Circling visibility Cats C and D 1½ SM. For inop ALS when using Selmer altimeter setting, increase LPV all Cats visibility to ¾ SM and LNAV visibility Cats C and D to 1½ SM.

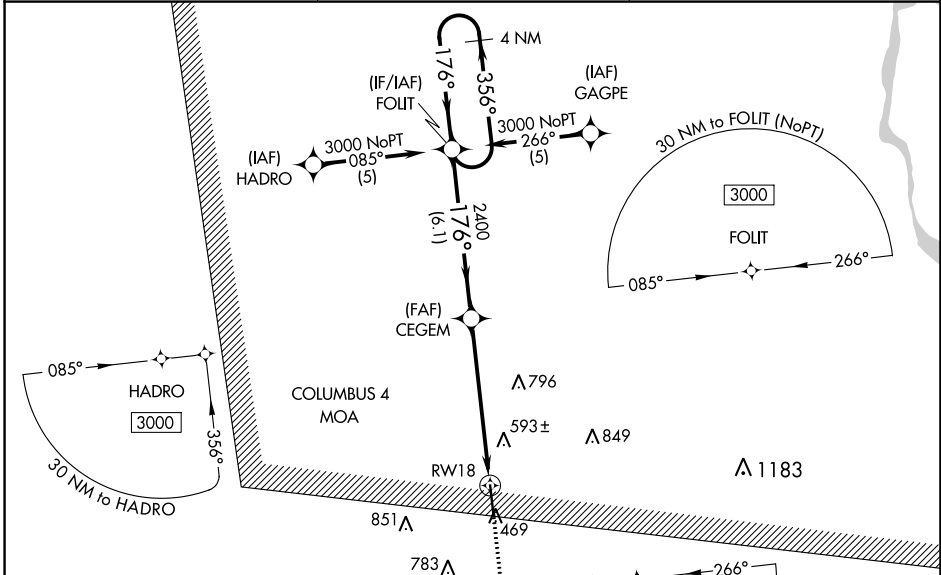


MISSED APPROACH:
Climb to 3000 direct
WEDGO and hold.

AWOS-3PT
118.675

MEMPHIS CENTER
135.9 273.55

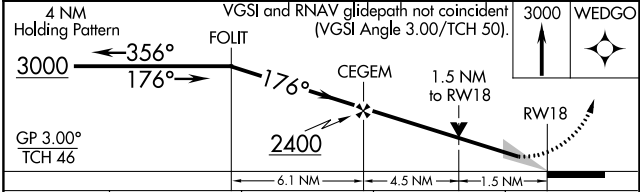
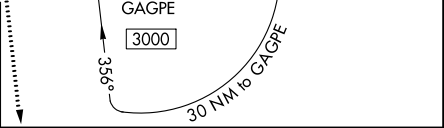
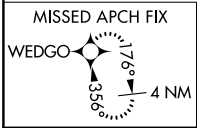
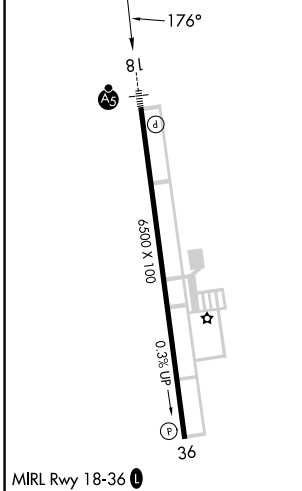
UNICOM
122.8 (CTAF) 0



SC-4, 22 FEB 2024 to 21 MAR 2024

SC-4, 22 FEB 2024 to 21 MAR 2024

ELEV 425	TDZE 414
----------	----------



CATEGORY	A	B	C	D
LPV DA		614-½	200 (200-½)	
LNAV/ VNAV DA		744-½	330 (400-½)	
LNAV MDA	940-½	526 (600-½)	940-1	526 (600-1)
<input checked="" type="checkbox"/> CIRCLING	940-1	515 (600-1)	1100-2 675 (700-2)	1160-2¼ 735 (800-2¼)

WAAS CH 48832 W36A	APP CRS 356°	Rwy Idg TDZE 425 Apt Elev 425	6500
--	------------------------	---	-------------

RNAV (GPS) RWY 36

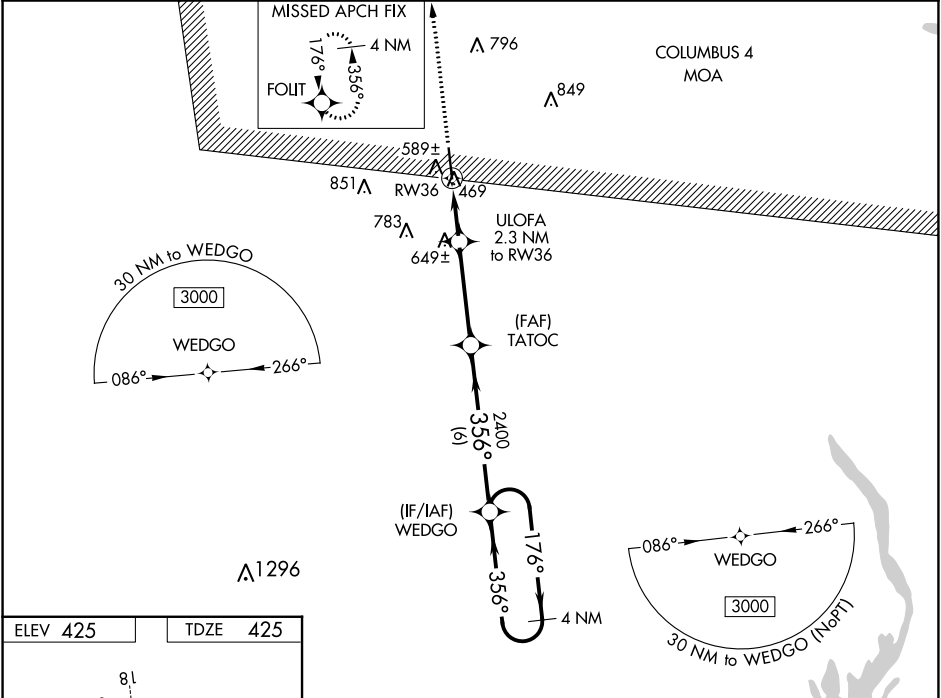
ROSCOE TURNER (CRX)

RNP APCH-GPS

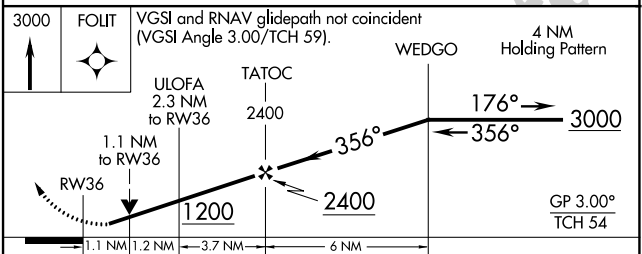
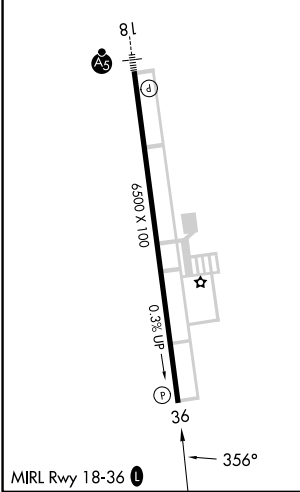
▼ For uncompensated Baro-VNAV systems, LNAV/VNAV NA below -15°C or above 54°C. When local altimeter setting not received, use Selmer altimeter setting and increase LPV DA to 764 feet and all visibilities ½ SM. Increase LNAV/VNAV DA to 818 feet and all visibilities ½ SM. Increase all MDAs 80 feet and LNAV visibility Cats C and D ¼ SM, and Circling visibility Cats C and D ½ SM. Baro-VNAV and VDP NA when using Selmer altimeter setting. Rwy 36 helicopter visibility reduction below ¾ SM NA.

MISSED APPROACH:
Climb to 3000 direct FOLIT and hold.

AWOS-3PT 118.675	MEMPHIS CENTER 135.9 273.55	UNICOM 122.8 (CTAF)
----------------------------	---------------------------------------	-------------------------------



ELEV 425	TDZE 425
-----------------	-----------------



CATEGORY	A	B	C	D
LPV DA		696-7/8	271 (300-7/8)	
LNAV/VNAV DA		750-1	325 (400-1)	
LNAV MDA	840-1	415 (500-1)	840-1 1/8	415 (500-1 1/8)
C CIRCLING	920-1	495 (500-1)	1100-2 675 (700-2)	1160-2 1/4 735 (600-2 1/4)

SC-4, 22 FEB 2024 to 21 MAR 2024

SC-4, 22 FEB 2024 to 21 MAR 2024