

| | | |
|--|------------------------|---|
| WAAS CH 62822 W16A | APP CRS 161° | Rwy Idg 4901 TDZE 1296 Apt Elev 1300 |
|--|------------------------|---|

RNAV (GPS) RWY 16

CRESTON MUNI (CSQ)

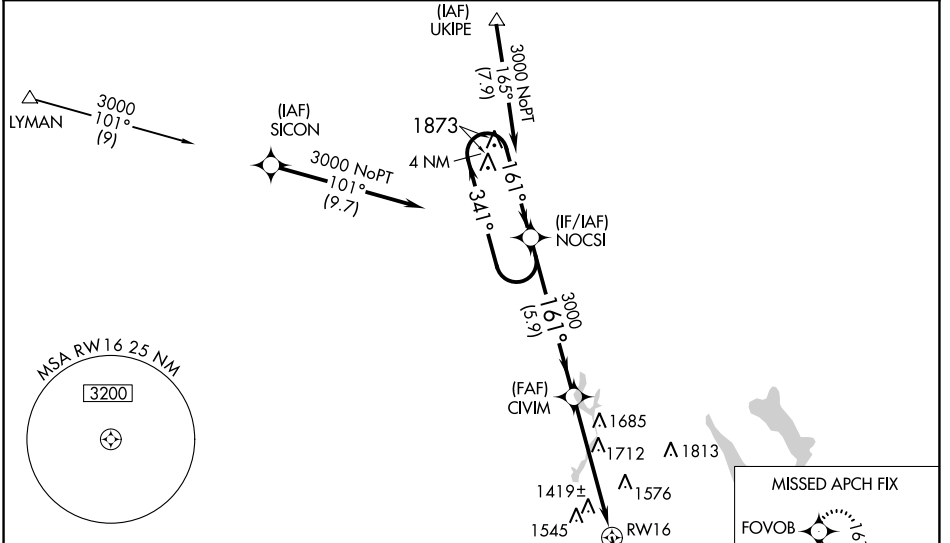
⚠ Baro-VNAV NA when using Des Moines altimeter setting. For uncompensated Baro-VNAV systems, LNAV/VNAV NA below -17°C (2°F) or above 54°C (130°F). DME/DME RNP-0.3 NA. Helicopter visibility reduction below ¼ SM NA. Circling NA to Rwy 4-22. Circling NA for Cats B and C west of Rwy 16-34. When local altimeter setting not received, use Des Moines altimeter setting and increase all DA 150 feet and all MDA 160 feet; increase LPV all Cats visibility ⅜ mile, LNAV/VNAV all Cats visibility ½ mile, LNAV and Circling Cat A/B visibility ¼ mile, and LNAV and Circling Cat C visibility ½ mile.

MISSED APPROACH:
Climb to 3000 direct FOVOB and hold.

AWOS-3
124.75

MINNEAPOLIS CENTER
125.65 306.95

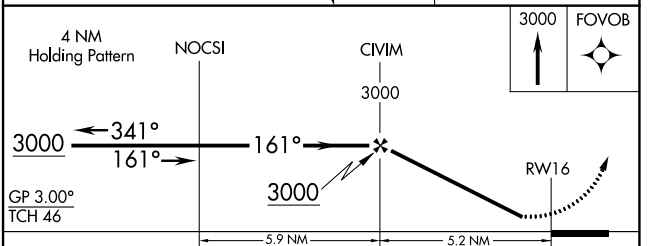
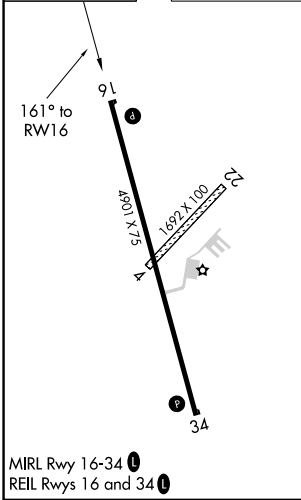
UNICOM
122.8 (CTAF) 0



NC-3, 22 FEB 2024 to 21 MAR 2024

NC-3, 22 FEB 2024 to 21 MAR 2024

| | | | |
|------|------|------|------|
| ELEV | 1300 | TDZE | 1296 |
|------|------|------|------|



| CATEGORY | A | B | C | D |
|--------------|---------|--------------|-----------------------|----|
| LPV DA | 1546-1 | 250 (300-1) | | NA |
| LNAV/VNAV DA | 1730-1½ | 434 (500-1½) | | NA |
| LNAV MDA | 2020-1 | 724 (800-1) | 2020-2 724 (800-2) | NA |
| CIRCLING | 2020-1 | 720 (800-1) | 2020-2 720 (800-2) | NA |

| | | |
|--|------------------------|---|
| WAAS CH 82422 W34A | APP CRS 341° | Rwy Idg 4901 TDZE 1296 Apt Elev 1300 |
|--|------------------------|---|

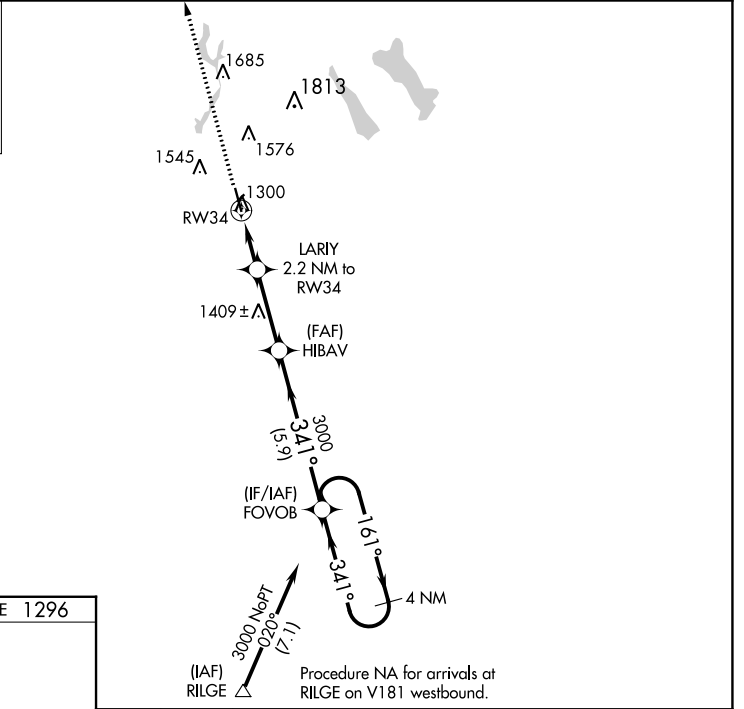
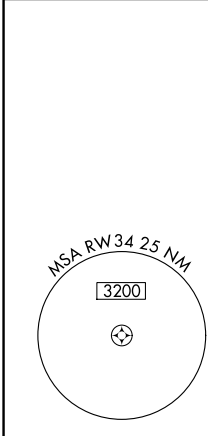
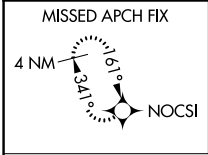
RNAV (GPS) RWY 34

CRESTON MUNI (CSQ)

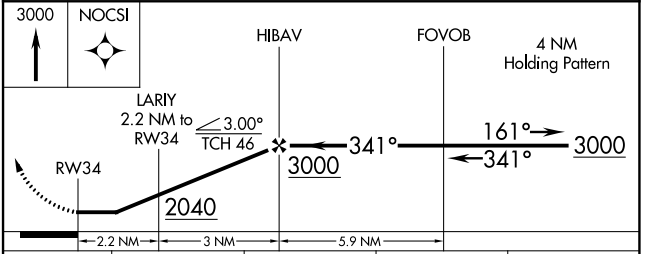
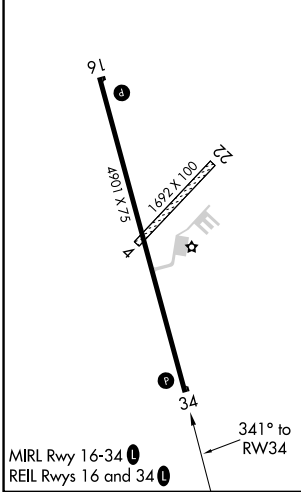
⚠ DME/DME RNP-0.3 NA. Helicopter visibility reduction below 1 SM NA. Circling NA for Cats B and C west of Rwy 16-34. Circling NA to Rwy 4-22. When local altimeter setting not received, use Des Moines altimeter setting and increase all MDA's 160 feet, and visibility Cat C ½ SM.

MISSED APPROACH: Climb to 3000 direct NOCSI and hold.

| | | |
|-------------------------|--|-------------------------------|
| AWOS-3 124.75 | MINNEAPOLIS CENTER 125.65 306.95 | UNICOM 122.8 (CTAF) |
|-------------------------|--|-------------------------------|



| | |
|-----------|-----------|
| ELEV 1300 | TDZE 1296 |
|-----------|-----------|



| CATEGORY | A | B | C | D |
|----------|-----------------------|-----------------------|-------------------------|----|
| LP MDA | 1660-1 | 364 (400-1) | | NA |
| LNAV MDA | 1660-1 | 364 (400-1) | | NA |
| CIRCLING | 1720-1 420 (500-1) | 1820-1 520 (600-1) | 1940-1¾ 640 (700-1¾) | NA |

NC-3, 22 FEB 2024 to 21 MAR 2024

NC-3, 22 FEB 2024 to 21 MAR 2024