

WAAS CH 87031 W27A	APP CRS 240°	Rwy Idg TDZE Apt Elev	6101 4702 4705
--	------------------------	-----------------------------	---

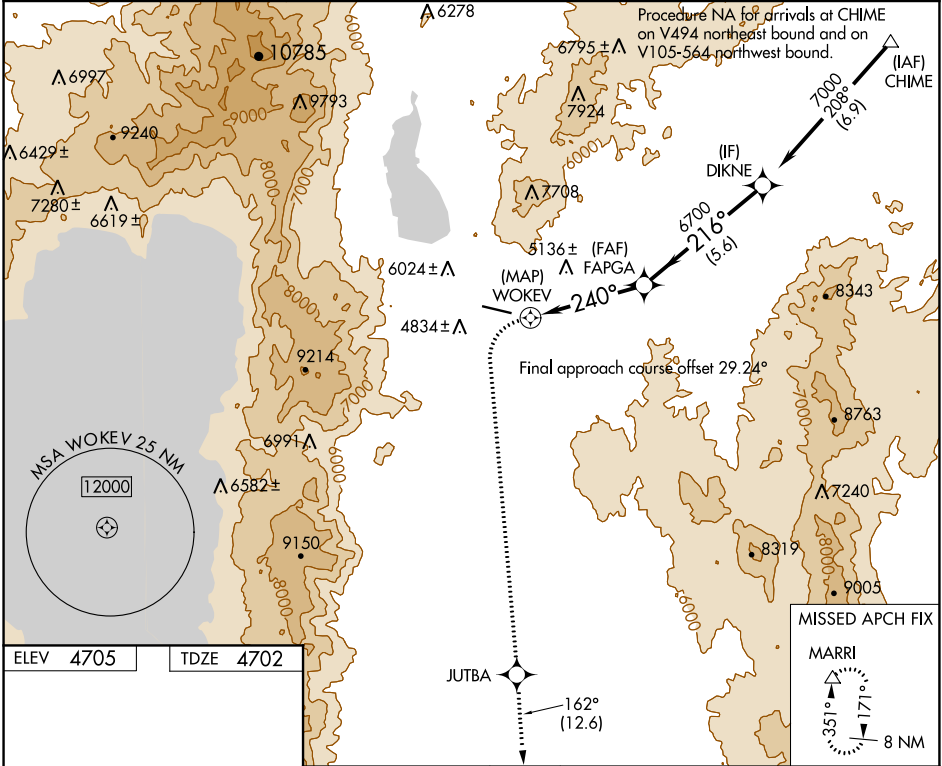
RNAV (GPS) RWY 27

CARSON CITY (CXP)

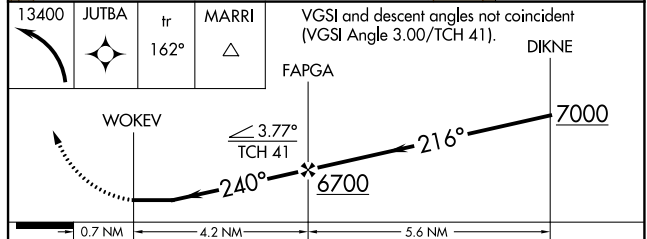
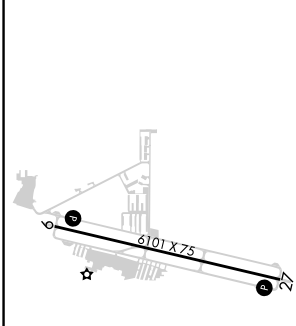
NA DME/DME RNP-0.3 NA. Procedure NA at night. When local altimeter setting not received use Reno/Tahoe altimeter setting and increase all MDA 540 feet. Helicopter visibility reduction below 1 SM not authorized. Circling NA north of Rwy 9-27.

MISSED APPROACH: Climbing left turn to 13400 direct JUTBA and on track 162° to MARRI and hold, continue climb-in-hold to 13400.

AWOS-3PT 119.925	NORCAL APP CON 119.2 279.55	CLNC DEL 133.25	UNICOM 123.0 (CTAF)
----------------------------	---------------------------------------	---------------------------	-------------------------------



ELEV 4705	TDZE 4702
-----------	-----------



CATEGORY	A	B	C	D
LP MDA	5900-1¼ 1198 (1200-1¼)	5900-1½ 1198 (1200-1½)	NA	
LNAV MDA	6180-1¼ 1478 (1500-1¼)	6180-1½ 1478 (1500-1½)	NA	
C CIRCLING	6180-1¼ 1475 (1500-1¼)	6180-1½ 1475 (1500-1½)	NA	

TDZL Rwy 9 and 27 **1**
MIRL Rwy 9-27 **1** *
REIL Rwy 9 and 27 **1**

SW-4, 09 SEP 2021 to 07 OCT 2021

SW-4, 09 SEP 2021 to 07 OCT 2021

APP CRS	Rwy Idg	N/A
342°	TDZE	N/A
	Apt Elev	4705

RNAV (GPS)-A

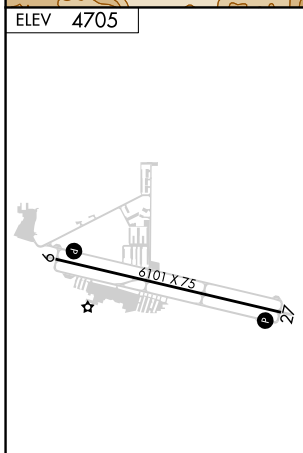
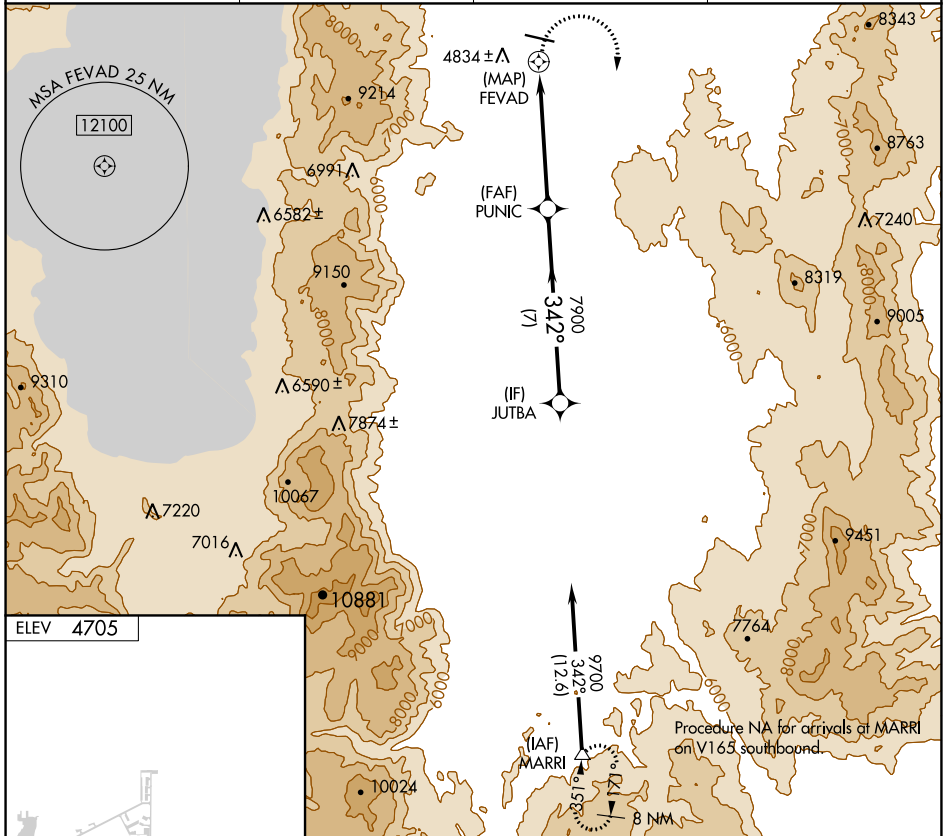
CARSON CITY (CXP)

RNP APCH.

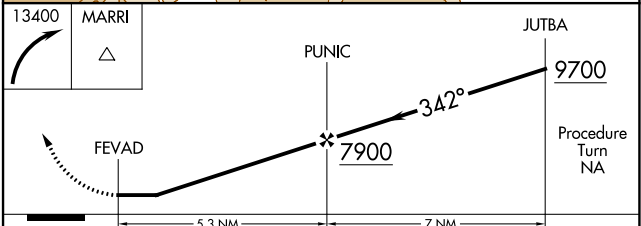
▼ Procedure NA at night. When local altimeter setting not received,
▲ NA use Reno/Tahoe Intl altimeter setting and increase all MDA 540 feet.
 Circling NA north of Rwy 9-27.

MISSED APPROACH: Climbing right turn to 13400 direct MARRI and hold, continue climb-in-hold to 13400.

AWOS-3PT 119.925	NORCAL APP CON 119.2 279.55	CLNC DEL 133.25	UNICOM 123.0 (CTAF) 0
----------------------------	---------------------------------------	---------------------------	---------------------------------



TDZL Rwy 9 and 27 **0**
 MIRL Rwy 9-27 **0 ***
 REIL Rwy 9 and 27 **0**



CATEGORY	A	B	C	D
C CIRCLING	6380-1¼ 1675 (1700-1¼)	6380-1½ 1675 (1700-1½)	6380-3 1675 (1700-3)	7660-3 2955 (3000-3)

SW-4, 09 SEP 2021 to 07 OCT 2021

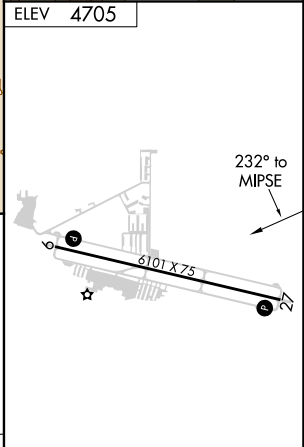
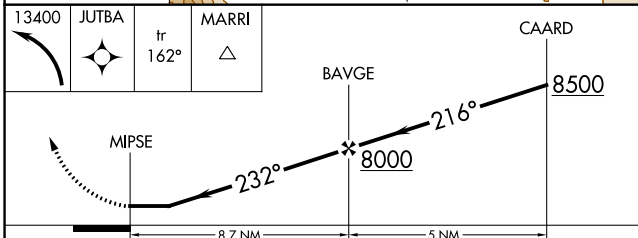
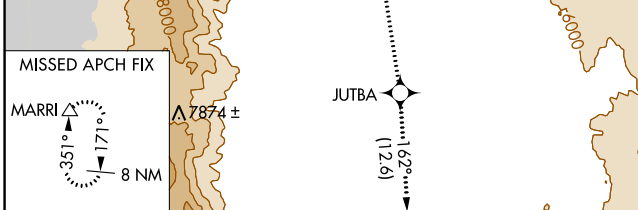
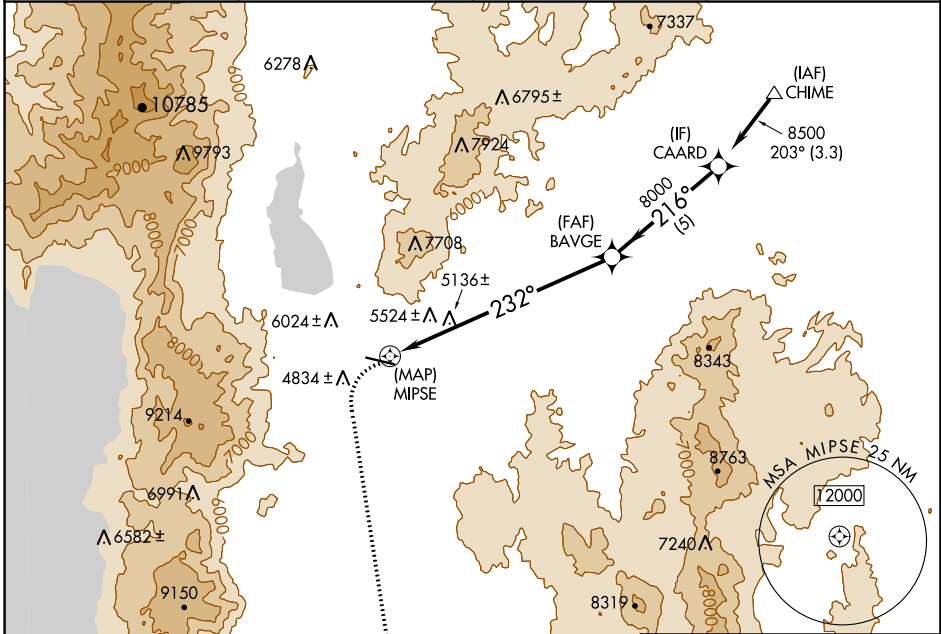
SW-4, 09 SEP 2021 to 07 OCT 2021

APP CRS	Rwy Idg	N/A
232°	TDZE	N/A
	Apt Elev	4705

RNAV (GPS)-B

CARSON CITY (CXP)

RNP APCH.		MISSED APPROACH: Climbing left turn to 13400 direct JUTBA and on track 162° direct MARRI and hold, continue climb-in-hold to 13400.	
<p>▽ Circling NA north of Rwy 9-27.</p> <p>▲ Procedure NA at night.</p>			
AWOS-3PT	NORCAL APP CON	CLNC DEL	UNICOM
119.925	119.2 279.55	133.25	123.0 (CTAF) 0



CATEGORY	A	B	C	D
☐ CIRCLING	6340-1¼ 1635 (1700-1¼)	6340-1½ 1635 (1700-1½)	6340-3 1635 (1700-3)	7660-3 2955 (3000-3)

TDZL Rwy 9 and 27 **0**
 MRL Rwy 9-27 **0** *
 REIL Rwy 9 and 27 **0**

SW-4, 09 SEP 2021 to 07 OCT 2021

SW-4, 09 SEP 2021 to 07 OCT 2021