

APP CRS	Rwy Idg	<b>2721</b>
<b>001°</b>	TDZE	<b>919</b>
	Apt Elev	<b>919</b>

# RNAV (GPS) RWY 36

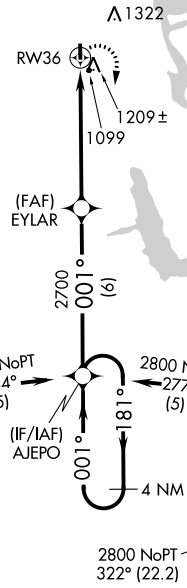
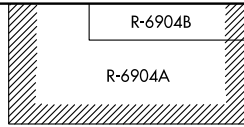
NECEDAH (DAF)

<p><b>▼</b> Rwy 36 helicopter visibility reduction below 1 SM NA. DME/DME-0.3 NA. Procedure NA at night. Use Wisconsin Rapids altimeter setting.</p> <p><b>▲</b> NA</p>	<p>MISSED APPROACH: Climbing right turn to 2800 direct AJEPO and hold.</p>
---	--

ISW ASOS  
**126.575**

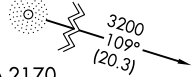
VOLK APP CON ★  
**135.25 244.875**

UNICOM  
**122.7 (CTAF) 0**



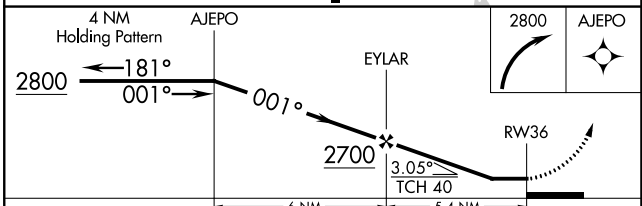
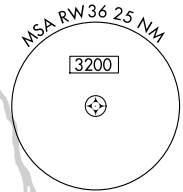
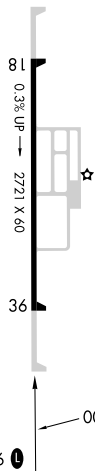
Procedure NA for arrival at bearings from CMY NDB 018 CW 198.

MCCOY  
CMY



Procedure NA for arrivals on DLL VORTAC radials 284 CW 011.

**▲ 2170**  
ELEV 919 TDZE 919



CATEGORY	A	B	C	D
LNAV MDA	1540-1	621 (700-1)		NA
CIRCLING	1580-1 661 (700-1)	1700-1 781 (800-1)		NA

EC-3, 22 FEB 2024 to 21 MAR 2024

EC-3, 22 FEB 2024 to 21 MAR 2024