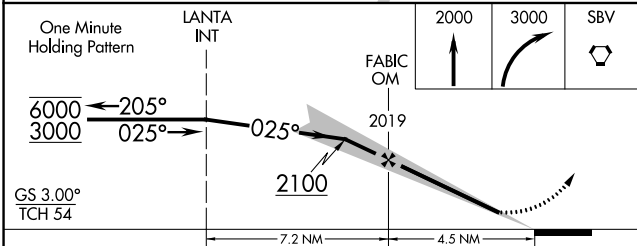
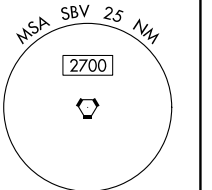
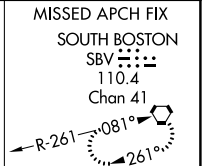
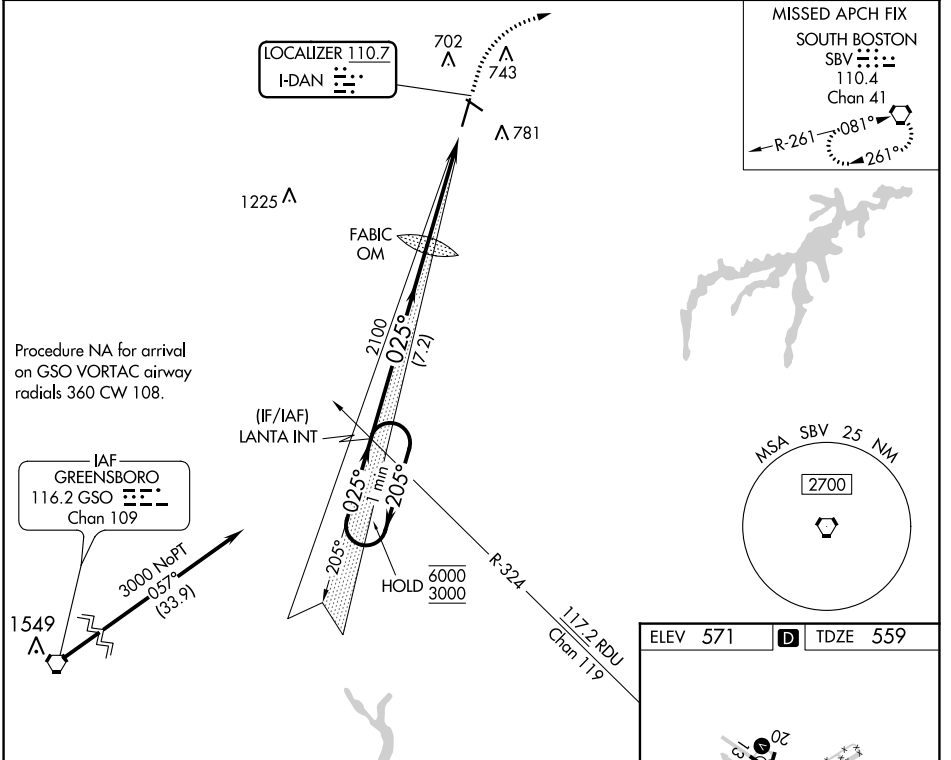


LOC I-DAN <b>110.7</b>	APP CRS <b>025°</b>	Rwy Idg TDZE Apt Elev	<b>5600</b> <b>559</b> <b>571</b>
---------------------------	------------------------	-----------------------------	---

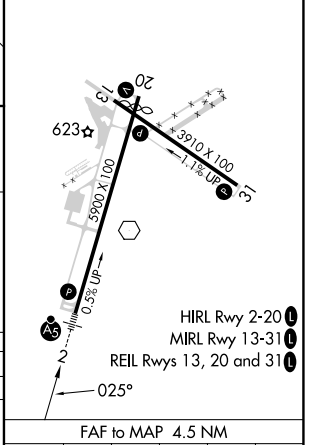
# ILS or LOC RWY 2

DANVILLE RGNL (DAN)

<p>For inop ALS, increase S-LOC 2 Cat C/D visibility to 1 3/8 SM.</p>	MALSR	<p>MISSED APPROACH: Climb to 2000 then climbing right turn to 3000 direct SBV VORTAC and hold.</p>
	ASOS <b>128.125</b>	



ELEV 571	<b>D</b>	TDZE 559
----------	----------	----------



CATEGORY	A	B	C	D
S-ILS 2	759-1/2 200 (200-1/2)			
S-LOC 2	1020-1/2	461 (500-1/2)	1020-1	461 (500-1)
CIRCLING	1120-1	549 (600-1)	1120-1 1/2	1200-2
			549 (600-1 1/2)	629 (700-2)

Knots	60	90	120	150	180
Min:Sec	4:30	3:00	2:15	1:48	1:30

NE-3, 22 FEB 2024 to 21 MAR 2024

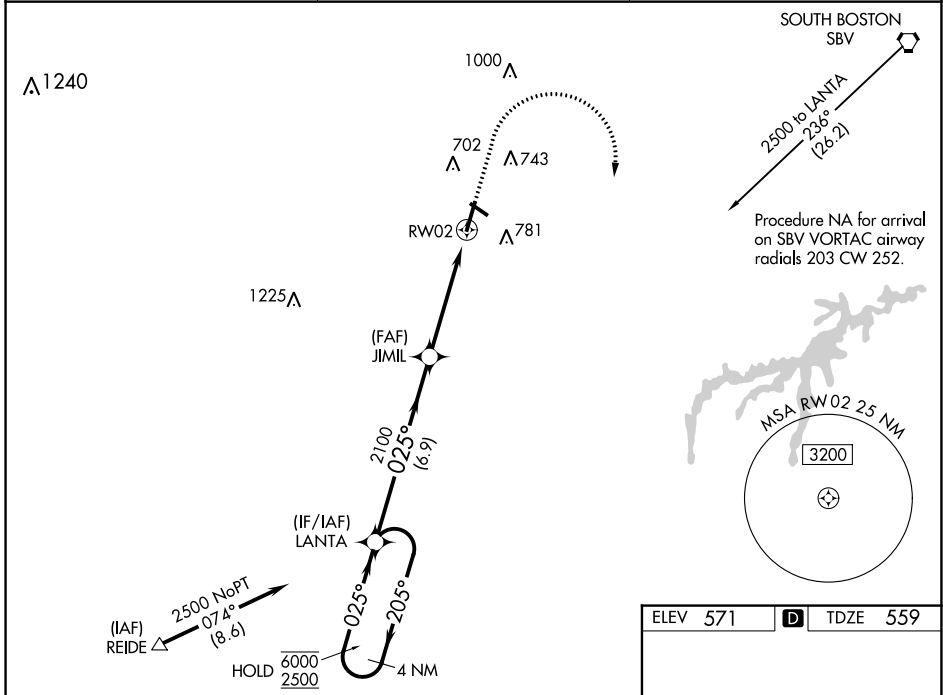
NE-3, 22 FEB 2024 to 21 MAR 2024

WAAS CH <b>42916</b> <b>W02A</b>	APP CRS <b>025°</b>	Rwy ldg TDZE Apt Elev	<b>5600</b> <b>559</b> <b>571</b>
--	------------------------	-----------------------------	---

# RNAV (GPS) RWY 2

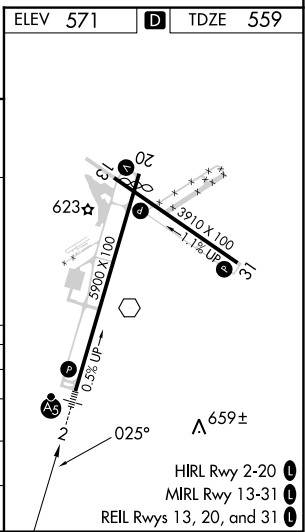
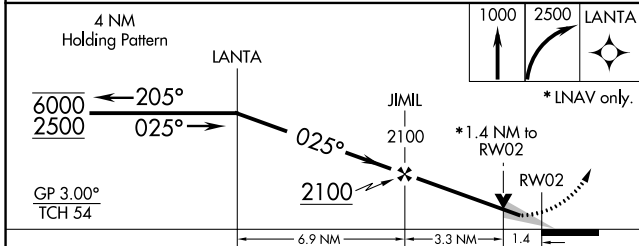
DANVILLE RGNL (DAN)

RNP APCH.		MALSRL	MISSED APPROACH: Climb to 1000 then climbing right turn to 2500 direct LANTA and hold.
<p><b>▽</b> For uncompensated Baro-VNAV systems, LNAV/VNAV NA below -14°C or above 54°C. For inop ALS increase LNAV/VNAV all Cats visibility to 1 SM. Increase LNAV Cats C/D visibility to 1½ SM.</p>			
ASOS <b>128.125</b>	WASHINGTON CENTER <b>124.05 352.0</b>	UNICOM <b>123.05 (CTAF) 0</b>	



NE-3, 22 FEB 2024 to 21 MAR 2024

NE-3, 22 FEB 2024 to 21 MAR 2024



CATEGORY	A	B	C	D
LPV DA		759-½	200 (200-½)	
LNAV/VNAV DA		924-⅝	365 (400-⅝)	
LNAV MDA	1040-½ 481 (500-½)		1040-1 481 (500-1)	
<b>C</b> CIRCLING	1120-1 549 (600-1)		1120-1½ 549 (600-1½)	1200-2 629 (700-2)

WAAS CH <b>87116</b> <b>W20A</b>	APP CRS <b>205°</b>	Rwy Idg TDZE Apt Elev	<b>5600</b> <b>568</b> <b>571</b>
--	------------------------	-----------------------------	---

# RNAV (GPS) RWY 20

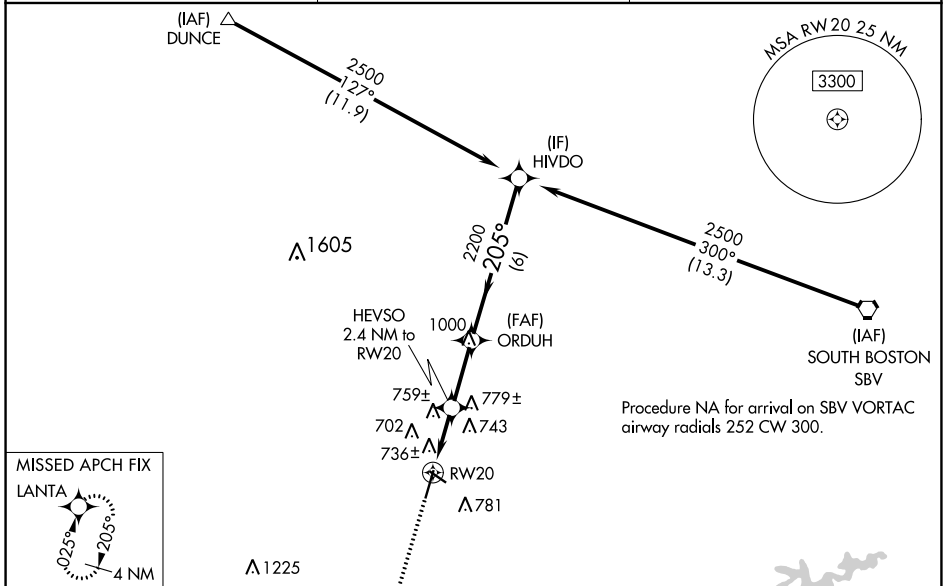
DANVILLE RGNL (DAN)

RNP APCH.

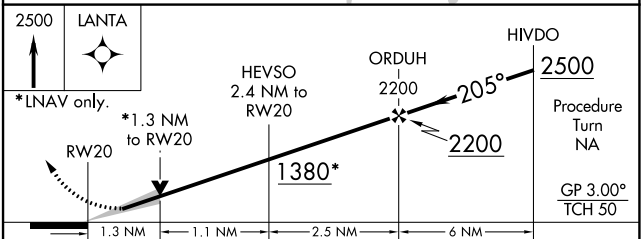
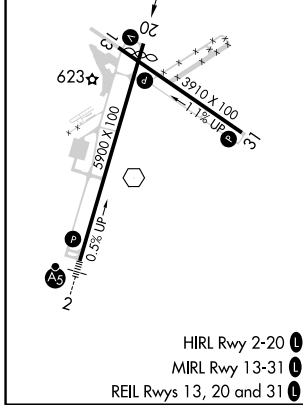
Baro-VNAV NA when using Roxboro, NC altimeter setting. For uncompensated Baro-VNAV systems, LNAV/VNAV NA below -16°C or above 47°C. When local altimeter setting not received, use Roxboro, NC altimeter setting and increase all DA 62 feet and all MDA 80 feet; increase LPV and LNAV/VNAV all Cats visibility ¼ mile and LNAV Cats C and D ¼ mile. VDP NA with Roxboro, NC altimeter setting.

MISSED APPROACH: Climb to 2500 direct LANTA and hold.

ASOS <b>128.125</b>	WASHINGTON CENTER <b>124.05 352.0</b>	UNICOM <b>123.05 (CTAF) 0</b>
------------------------	--	----------------------------------



ELEV 571	<b>D</b>	TDZE 568
----------	----------	----------



CATEGORY	A	B	C	D
LPV DA	768-1 200 (200-1)			
LNAV/VNAV DA	1026-1½ 458 (500-1½)			
LNAV MDA	1020-1	452 (500-1)	1020-1¼ 452 (500-1¼)	1020-1½ 452 (500-1½)


NE-3, 22 FEB 2024 to 21 MAR 2024

NE-3, 22 FEB 2024 to 21 MAR 2024


WAAS CH <b>93631</b> <b>W31A</b>	APP CRS <b>314°</b>	Rwy Idg TDZE <b>561</b> Apr Elev <b>571</b>	<b>3910</b>
--	------------------------	---	-------------

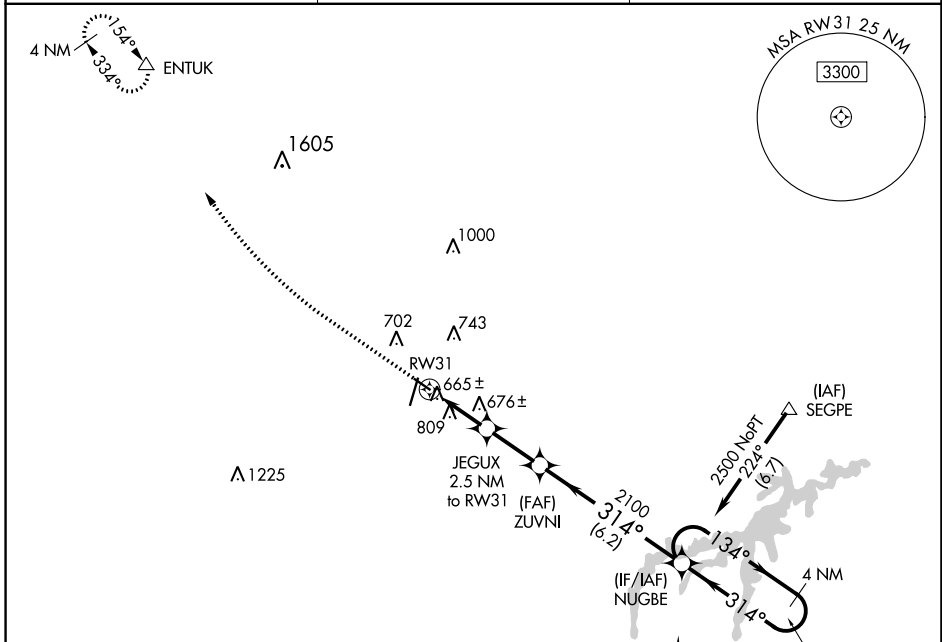
# RNAV (GPS) RWY 31

DANVILLE RGNL (DAN)

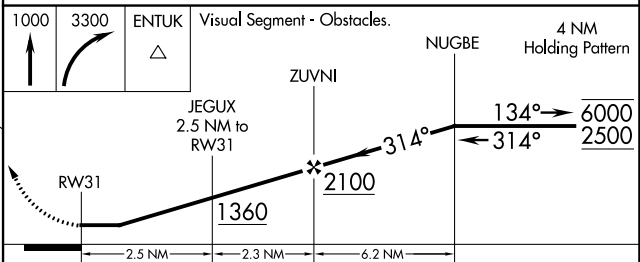
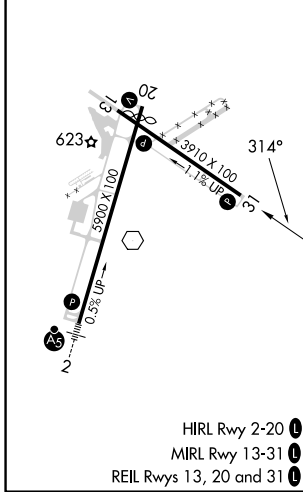
RNP APCH.  
 Rwy 31 helicopter visibility reduction below 3/4 SM NA.

MISSED APPROACH: Climb to 1000 then climbing right turn to 3300 direct ENTUK and hold.

ASOS <b>128.125</b>	WASHINGTON CENTER <b>124.05 352.0</b>	UNICOM <b>123.05 (CTAF)</b> 
------------------------	--	--



ELEV 571	<b>D</b>	TDZE 561
----------	----------	----------



CATEGORY	A	B	C	D
LP MDA	920-1	359 (400-1)		NA
LNAV MDA	1060-1	499 (500-1)		NA

NE-3, 22 FEB 2024 to 21 MAR 2024

NE-3, 22 FEB 2024 to 21 MAR 2024