

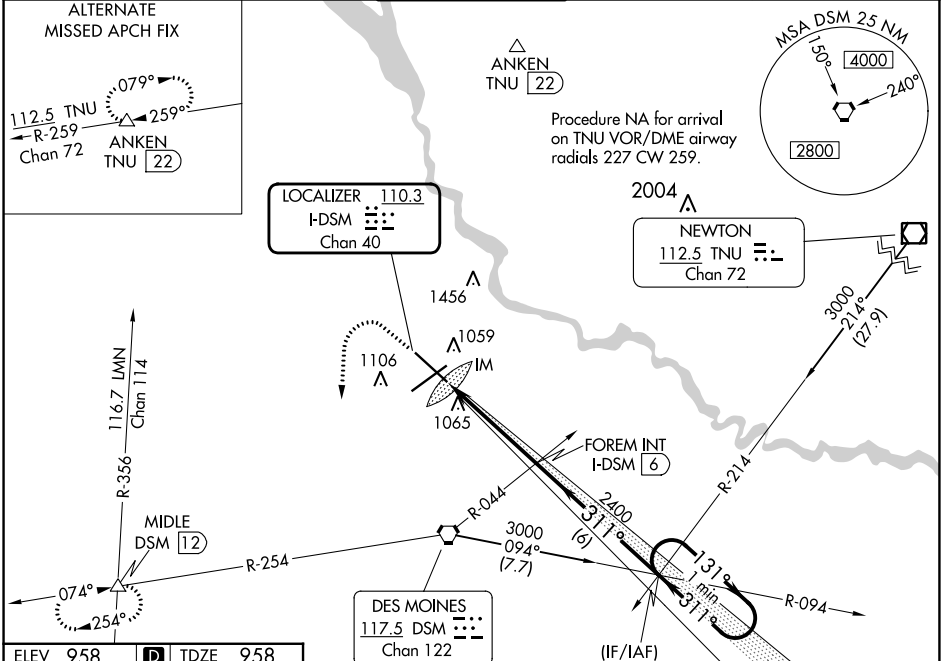
LOC/DME I-DSM 110.3 Chan 40	APP CRS 311°	Rwy ldg TDZE Apt Elev 9001 958 958
---	------------------------	--

ILS RWY 31 (CAT II & III)

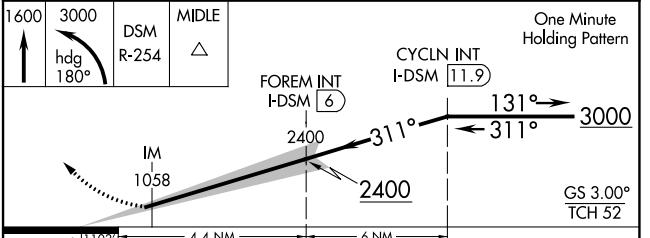
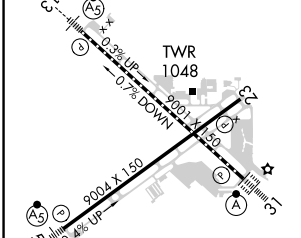
DES MOINES INTL (DSM)

	MISSED APPROACH: Climb to 1600 then climbing left turn to 3000 on heading 180° and on DSM VORTAC R-254 to MIDDLE INT/12 DME and hold.			
	ATIS 119.55	DES MOINES APP CON 123.9 307.15	DES MOINES TOWER 118.3 257.8	GND CON 121.9 348.6

ATIS 119.55	DES MOINES APP CON 123.9 307.15	DES MOINES TOWER 118.3 257.8	GND CON 121.9 348.6	CLNC DEL 134.15 317.55
-----------------------	---	--	-------------------------------	----------------------------------



ELEV 958	D	TDZE 958
----------	----------	----------



CATEGORY	A	B	C	D
S-ILS 31	CAT II RA 101/12		100 DA 1058	
S-ILS 31	CAT III RVR 06			

CATEGORY II & III ILS - SPECIAL AIRCREW & AIRCRAFT CERTIFICATION REQUIRED

REIL Rwy 5 and 23
TDZ/CL Rwy 31
HIRL Rwy 13-31 and 5-23

NC-3, 22 FEB 2024 to 21 MAR 2024

NC-3, 22 FEB 2024 to 21 MAR 2024

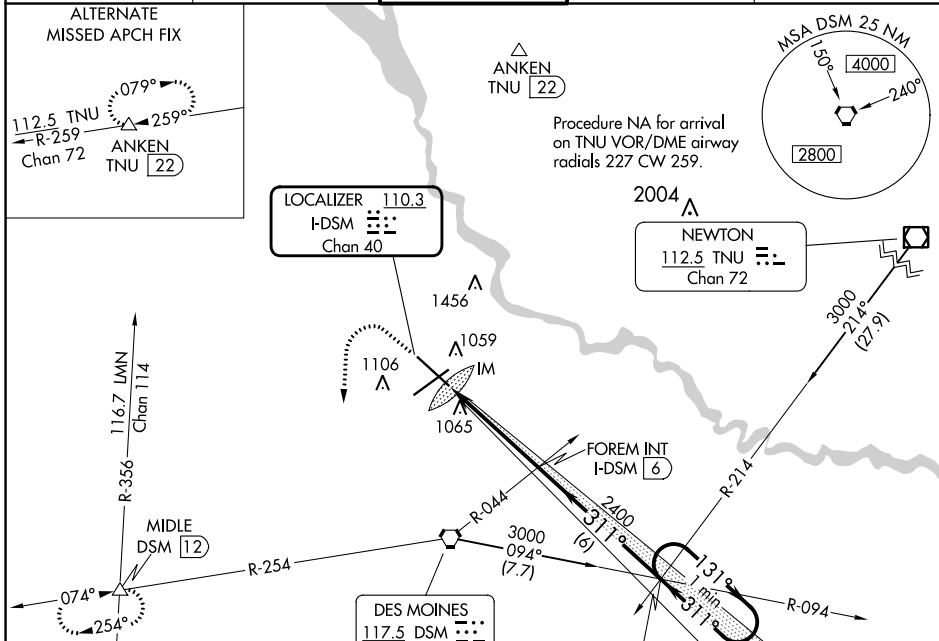
LOC/DME I-DSM 110.3 Chan 40	APP CRS 311°	Rwy ldg TDZE Apt Elev	9001 958 958
--	------------------------	-----------------------------	---

ILS RWY 31 (SA CAT I)

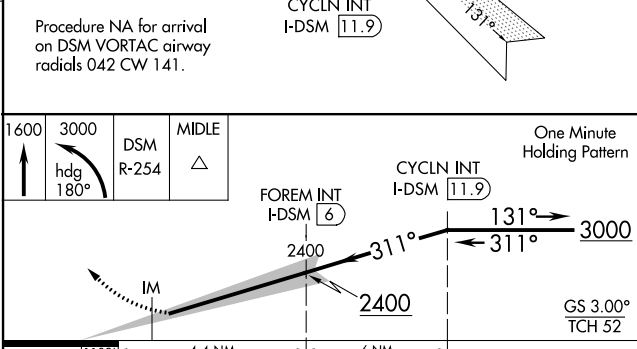
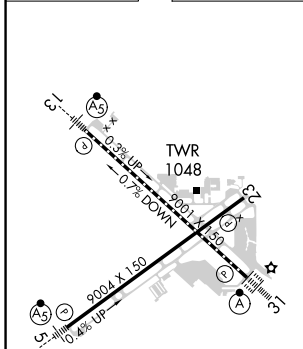
DES MOINES INTL (DSM)

<p>Requires specific OPSPEC, MSPEC, or LOA approval and use of HUD to DH.</p>	ALSF-2 	MISSED APPROACH: Climb to 1600 then climbing left turn to 3000 on heading 180° and on DSM VORTAC R-254 to MIDDLE INT/12 DME and hold.

ATIS 119.55	DES MOINES APP CON 123.9 307.15	DES MOINES TOWER 118.3 257.8	GND CON 121.9 348.6	CLNC DEL 134.15 317.55
-----------------------	---	--	-------------------------------	----------------------------------



ELEV 958	D	TDZE 958
----------	----------	----------



CATEGORY	A	B	C	D
S-ILS 31	RA 159/14 150 DA 1108			

SA CATEGORY I ILS-SPECIAL AIRCREW & AIRCRAFT CERTIFICATION REQUIRED

REIL Rwy 5 and 23
TDZ/CL Rwy 31
HIRL Rwy 13-31 and 5-23

NC-3, 22 FEB 2024 to 21 MAR 2024

NC-3, 22 FEB 2024 to 21 MAR 2024

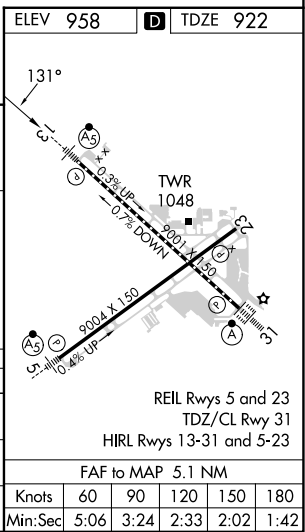
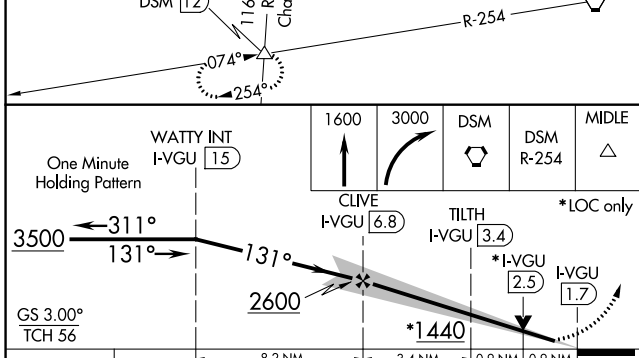
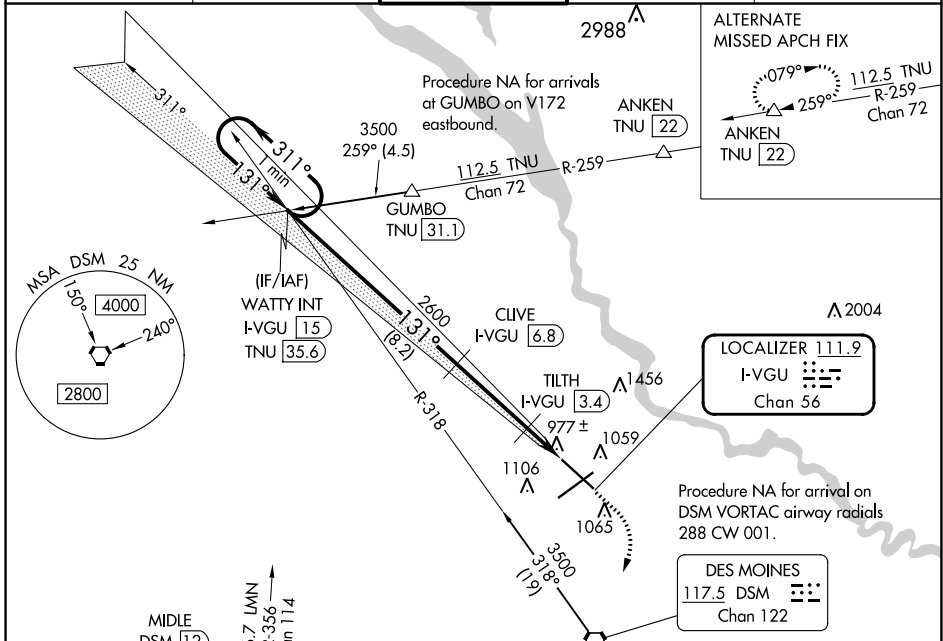
LOC/DME I-VGU 111.9 Chan 56	APP CRS 131°	Rwy Idg TDZE 922 Apt Elev 958	9001 922 958
---	------------------------	---	---

ILS or LOC RWY 13

DES MOINES INTL (DSM)

<p>V DME required. For inop ALS, increase S-LOC 13 Cats C/D visibility to RVR 4500. #RVR 1800 authorized with use of FD or AP or HUD to DA.</p>	<p>MALSR </p>	<p>MISSED APPROACH: Climb to 1600 then climbing right turn to 3000 direct DSM VORTAC then on DSM VORTAC R-254 to MIDDLE INT/DSM 12 DME and hold.</p>
--	-------------------	--

ATIS 119.55	DES MOINES APP CON 123.9 307.15	DES MOINES TOWER 118.3 257.8	GND CON 121.9 348.6	CINC DEL 134.15 317.55
-----------------------	---	--	-------------------------------	----------------------------------



CATEGORY	A	B	C	D
S-ILS 13#	1122/24		200 (200-½)	
S-LOC 13	1240/24		318 (300-½)	
C CIRCLING	1420-1	462 (500-1)	1600-1¾ 642 (700-1¾)	1760-2½ 802 (900-2½)

NC-3, 22 FEB 2024 to 21 MAR 2024

NC-3, 22 FEB 2024 to 21 MAR 2024

LOC/DME I-DSM 110.3 Chan 40	APP CRS 311°	Rwy ldg TDZE Apt Elev 9001 958 958
---	------------------------	--

ILS or LOC RWY 31

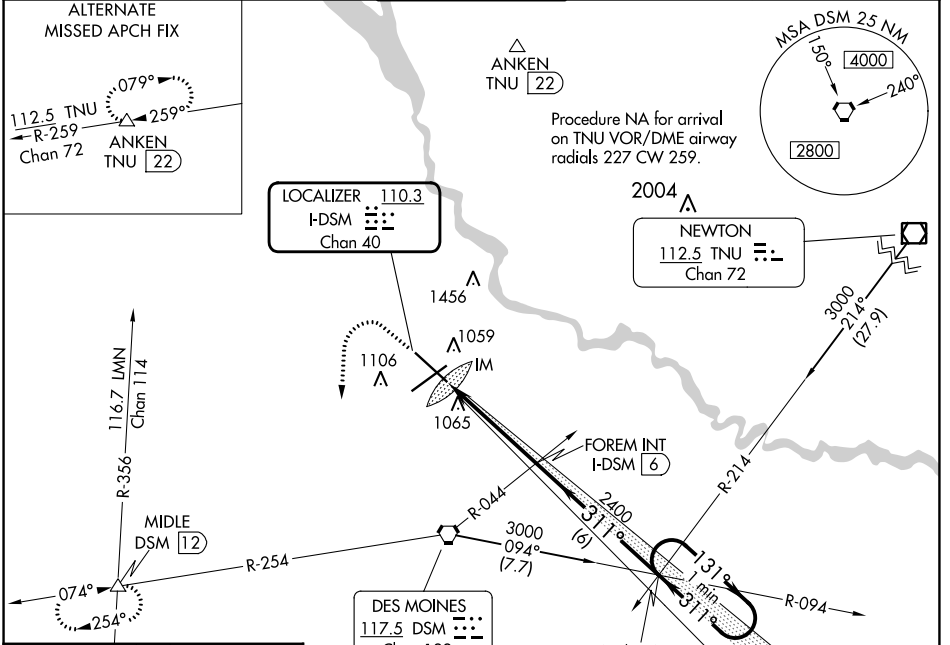
DES MOINES INTL (DSM)

⚠ For inop ALS, increase S-ILS 31 Cat E visibility to RVR 4000 and S-LOC 31 Cat E visibility to RVR 6000.

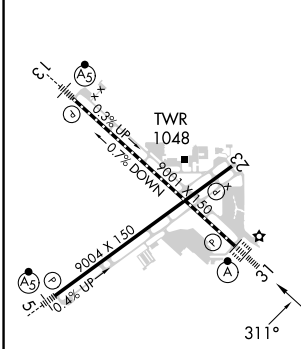
ALSF-2

MISSED APPROACH: Climb to 1600 then climbing left turn to 3000 on heading 180° and on DSM VORTAC R-254 to MIDDLE INT/12 DME and hold.

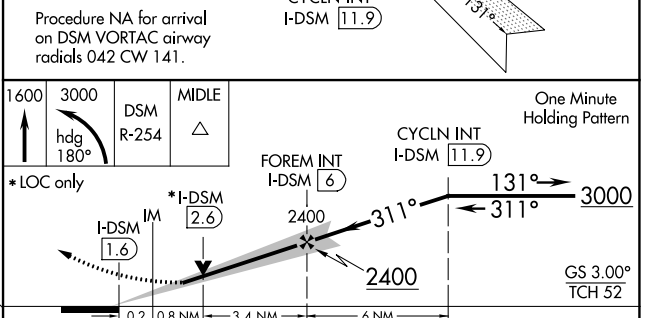
ATIS 119.55	DES MOINES APP CON 123.9 307.15	DES MOINES TOWER 118.3 257.8	GND CON 121.9 348.6	CLNC DEL 134.15 317.55
-----------------------	---	--	-------------------------------	----------------------------------



ELEV 958	D TDZE 958
----------	-------------------



Knots	60	90	120	150	180
Min:Sec	4:24	2:56	2:12	1:46	1:28



CATEGORY	A	B	C	D	E
S-ILS 31	1158/18 200 (200-½)				
S-LOC 31	1340/24	382 (400-½)	1340/35 382 (400-¾)		
C CIRCLING	1420-1	462 (500-1)	1600-1½	1760-2½	1760-2¾ 642 (700-1½) 802 (900-2½) 802 (900-2¾)

NC-3, 22 FEB 2024 to 21 MAR 2024


NC-3, 22 FEB 2024 to 21 MAR 2024

LOC/DME I-DWW 111.5 Chan 52	APP CRS 053°	Rwy Idg TDZE Apt Elev	9004 931 958
--	------------------------	-----------------------------	---

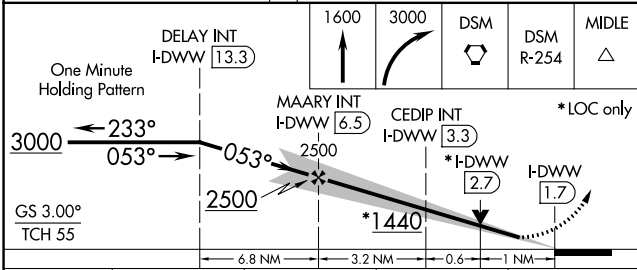
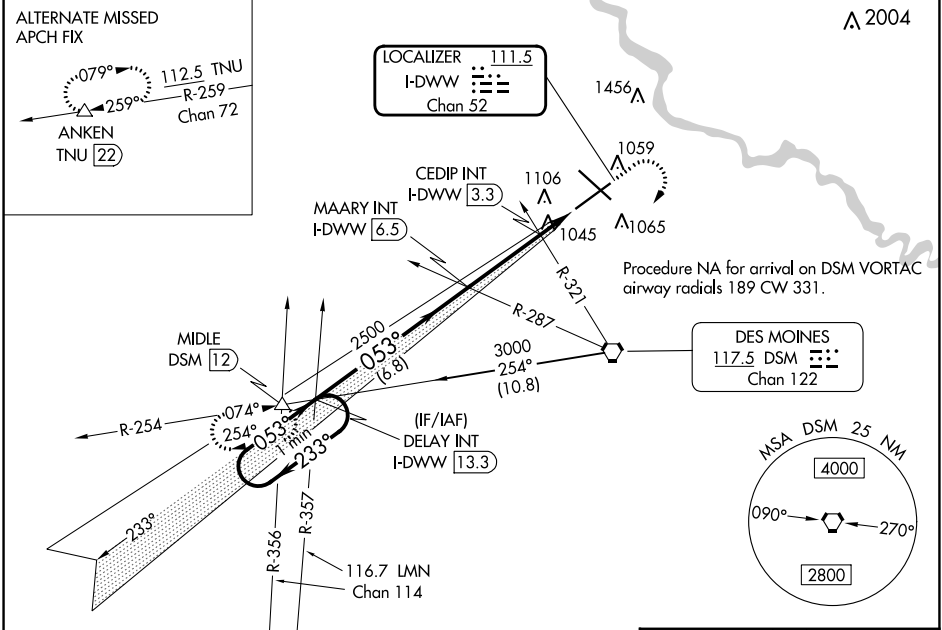
ILS or LOC RWY 5

DES MOINES INTL (DSM)

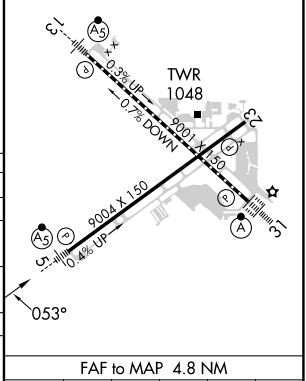
▼ For inop ALS, increase S-LOC 5 Cats C and D visibility to 1 3/8 SM and CEDIP fix minimums Cats C and D visibility to RVR 5500.
▲ Autopilot coupled approach NA below 1256 MSL.
 #RVR 1800 authorized with use of FD or AP or HUD to DA.

MALSRS

MISSED APPROACH: Climb to 1600 then climbing right turn to 3000 direct DSM VORTAC then on DSM VORTAC R-254 to MIDDLE INT/DSM 12 DME and hold.

ATIS 119.55	DES MOINES APP CON 123.9 307.15	DES MOINES TOWER 118.3 257.8	GND CON 121.9 348.6	CLNC DEL 134.15 317.55
-----------------------	---	--	-------------------------------	----------------------------------



ELEV 958	D TDZE 931
REIL Rvws 5 and 23 TDZ/CL Rwy 31 HIRL Rvws 13-31 and 5-23	



CATEGORY	A	B	C	D
S-ILS 5 #	1131/24 200 (200-1/2)			
S-LOC 5	1440/24	509 (500-1/2)	1440/55	509 (500-1)
C CIRCLING	1440-1	482 (500-1)	1600-1 3/4 642 (700-1 3/4)	1760-2 1/2 802 (900-2 1/2)
CEDIP FIX MINIMUMS (DUAL VOR RECEIVERS OR DME REQUIRED)				
S-LOC 5	1300/24	369 (400-1/2)	1300/35	369 (400-3/4)
C CIRCLING	1420-1	462 (500-1)	1600-1 3/4 642 (700-1 3/4)	1760-2 1/2 802 (900-2 1/2)

FAF to MAP 4.8 NM					
Knots	60	90	120	150	180
Min:Sec	4:48	3:12	2:24	1:55	1:36

NC-3, 22 FEB 2024 to 21 MAR 2024


NC-3, 22 FEB 2024 to 21 MAR 2024

WAAS CH 72602 W13A	APP CRS 131°	Rwy Idg 9001 TDZE 922 Apt Elev 958
--	------------------------	---

RNAV (GPS) RWY 13

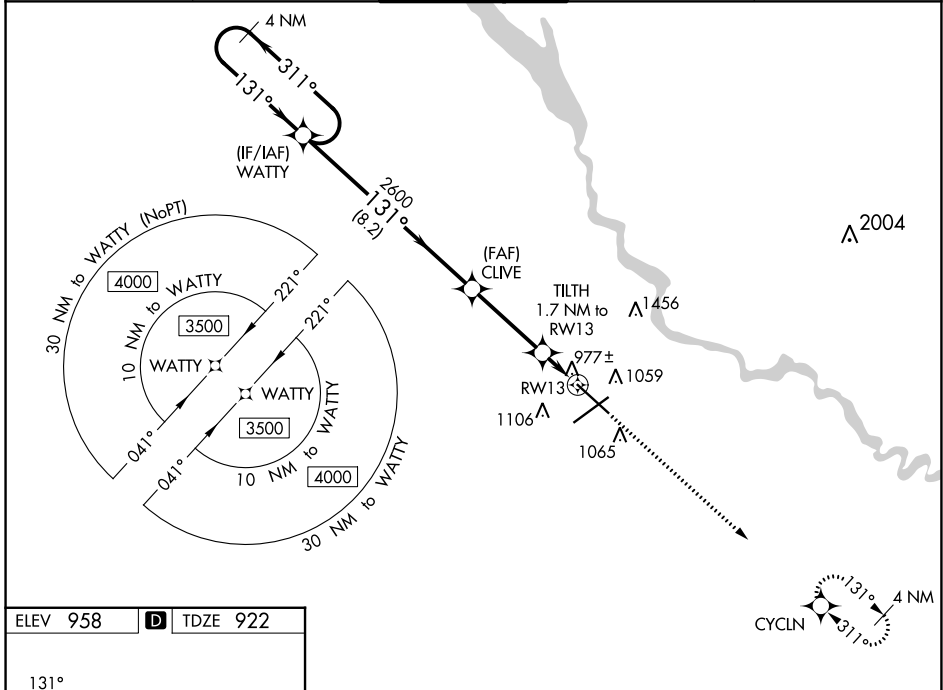
DES MOINES INTL (DSM)

⚠ For uncompensated Baro-VNAV systems, LNAV/VNAV NA below -19°C (-2°F) or above 54°C (130°F). DME/DME RNP-0.3 NA.
 For inop ALS, increase LNAV/VNAV all Cats visibility to RVR 4000 and LNAV Cats C and D visibility to RVR 4500.
 # RVR 1800 authorized with use of FD or AP or HUD to DA.

MALSR 

MISSED APPROACH: Climb to 3000 direct CYCLN and hold.

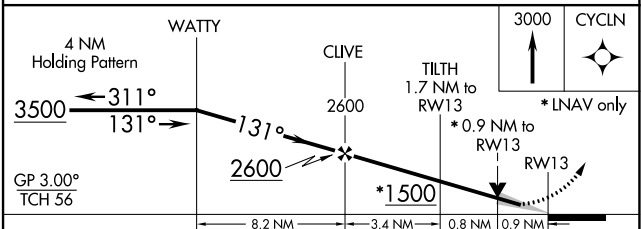
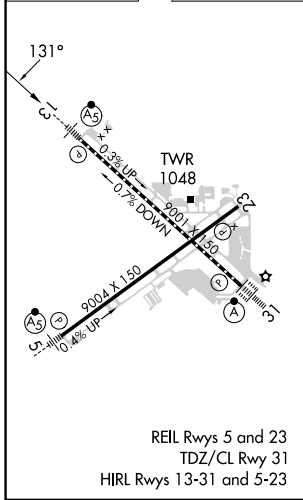
ATIS 119.55	DES MOINES APP CON 123.9 307.15	DES MOINES TOWER 118.3 257.8	GND CON 121.9 348.6	CLNC DEL 134.15 317.55
-----------------------	---	--	-------------------------------	----------------------------------



NC-3, 22 FEB 2024 to 21 MAR 2024

NC-3, 22 FEB 2024 to 21 MAR 2024

ELEV 958	D TDZE 922
----------	-------------------



CATEGORY	A	B	C	D
LPV DA#		1122/24	200 (200-1/2)	
LNAV/VNAV DA		1172/24	250 (300-1/2)	
LNAV MDA		1240/24	318 (300-1/2)	
<input checked="" type="checkbox"/> CIRCLING	1420-1	462 (500-1)	1600-1 3/4 642 (700-1 3/4)	1760-2 1/2 802 (900-2 1/2)

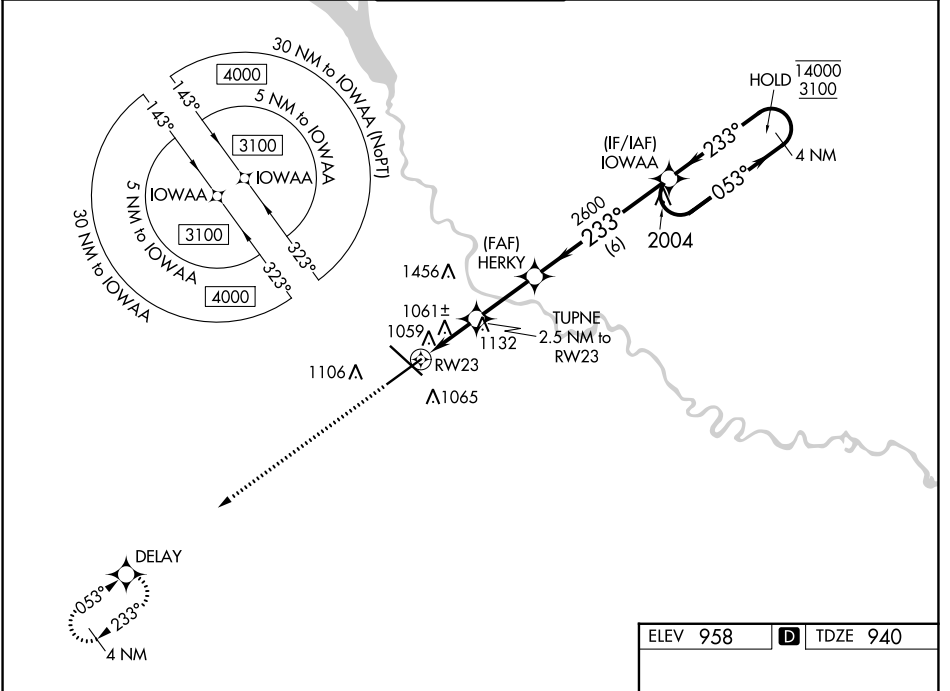
WAAS CH 97541 W23A	APP CRS 233°	Rwy Idg TDZE Apt Elev	9004 940 958
--	------------------------	-----------------------------	---

RNAV (GPS) RWY 23

DES MOINES INTL (DSM)

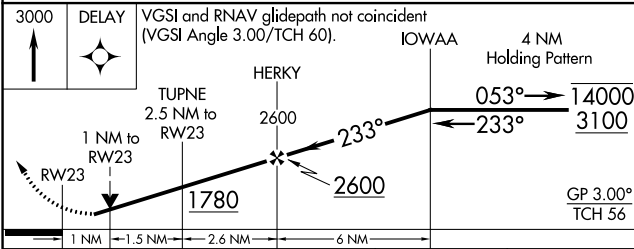
RNP APCH - GPS.		MISSED APPROACH: Climb to 3000 direct DELAY and hold.	
<p>▼ Rwy 23 helicopter visibility reduction below 3/4 SM NA. For uncompensated Baro-VNAV systems, LNAV/VNAV NA below -20°C or above 54°C.</p>			

ATIS 119.55	DES MOINES APP CON 123.9 307.15	DES MOINES TOWER 118.3 257.8	GND CON 121.9 348.6	CLNC DEL 134.15 317.55
-----------------------	---	--	-------------------------------	----------------------------------



NC-3, 22 FEB 2024 to 21 MAR 2024

NC-3, 22 FEB 2024 to 21 MAR 2024



ELEV 958	D	TDZE 940
----------	----------	----------

The diagram shows the holding pattern and missed approach:

- Holding Pattern:** 4 NM holding pattern at 3100, 053° inbound, 233° outbound.
- Missed Approach:** Climb to 3000, then 053° to DELAY, then 233° to TUPNE.
- Obstacles:** TWR 1048, 9004 X 150, 3001 X 150.
- Gradients:** 0.33% UP, 0.7% DOWN.

REIL Rwy 5 and 23	TDZ/CL Rwy 31
HIRL Rwy 13-31 and 5-23	

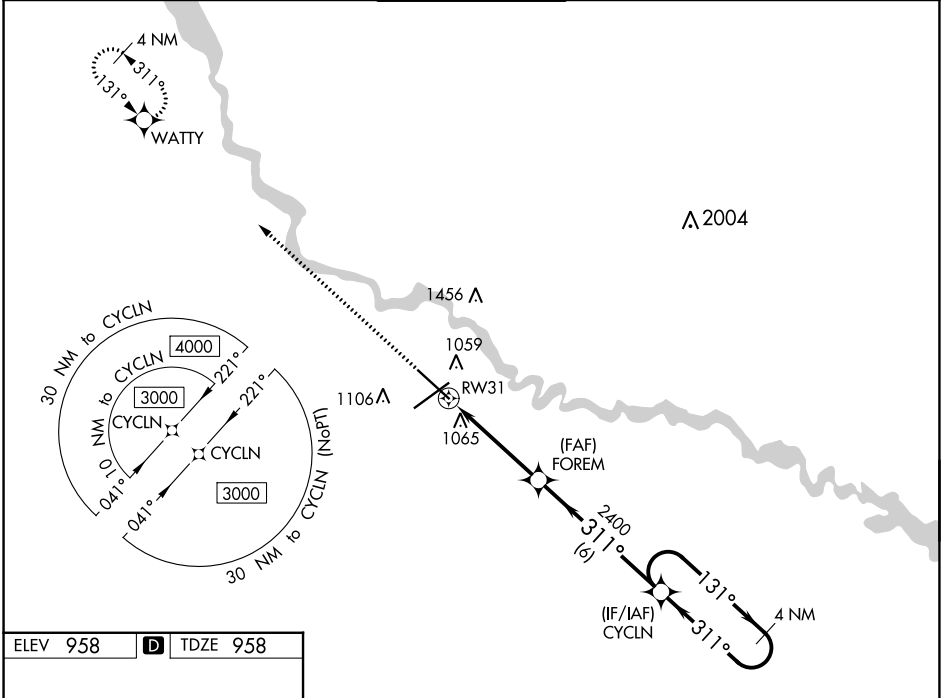
CATEGORY	A	B	C	D
LPV DA		1263-1	323 (400-1)	
LNAV/VNAV DA		1220-7/8	280 (300-7/8)	
LNAV MDA		1320-1	380 (400-1)	
C CIRCLING	1420-1	462 (500-1)	1600-1 3/4 642 (700-1 3/4)	1760-2 1/2 802 (900-2 1/2)

WAAS CH 78002 W31A	APP CRS 311°	Rwy Idg 9001 TDZE 958 Apt Elev 958
--	------------------------	---

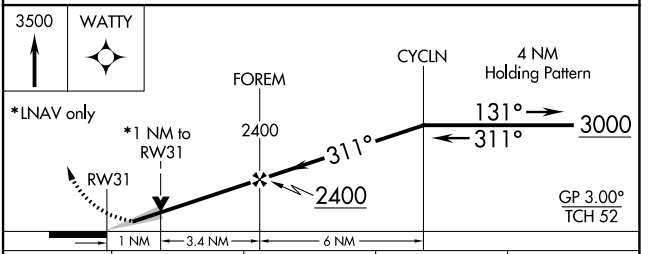
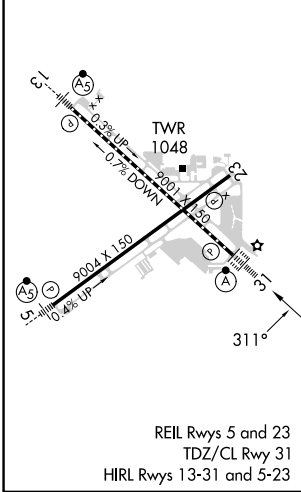
RNAV (GPS) RWY 31

DES MOINES INTL (DSM)

RNP APCH - GPS.		ALSF-2	MISSED APPROACH: Climb to 3500 direct WATTY and hold.	
<p>▽ For uncompensated Baro-VNAV systems, LNAV/VNAV NA below -20° or above 54°. For inop ALS, increase LNAV Cats C/D visibility to RVR 5500. Baro-VNAV and VDP NA when using Ankeny Rgnl altimeter setting.</p>				
ATIS 119.55	DES MOINES APP CON 123.9 307.15	DES MOINES TOWER 118.3 257.8	GND CON 121.9 348.6	CLNC DEL 134.15 317.55



ELEV 958	D	TDZE 958
----------	----------	----------



CATEGORY	A	B	C	D
LPV DA		1158/18	200 (200-½)	
LNAV/VNAV DA		1354/35	396 (400-⅝)	
LNAV MDA	1320/24	362 (400-½)	1320/35	362 (400-⅝)
C CIRCLING	1420-1	462 (500-1)	1600-1¾ 642 (700-1¾)	1760-2½ 802 (900-2½)

NC-3, 22 FEB 2024 to 21 MAR 2024

NC-3, 22 FEB 2024 to 21 MAR 2024

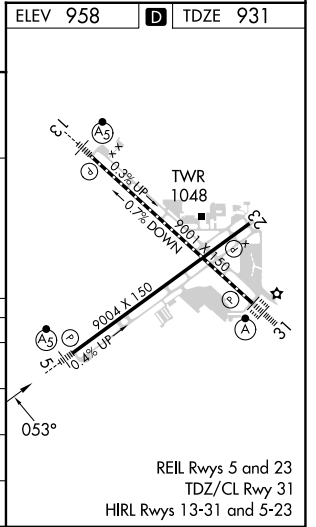
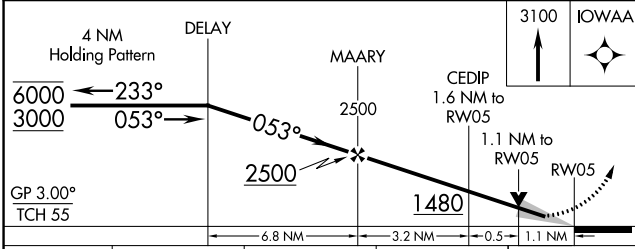
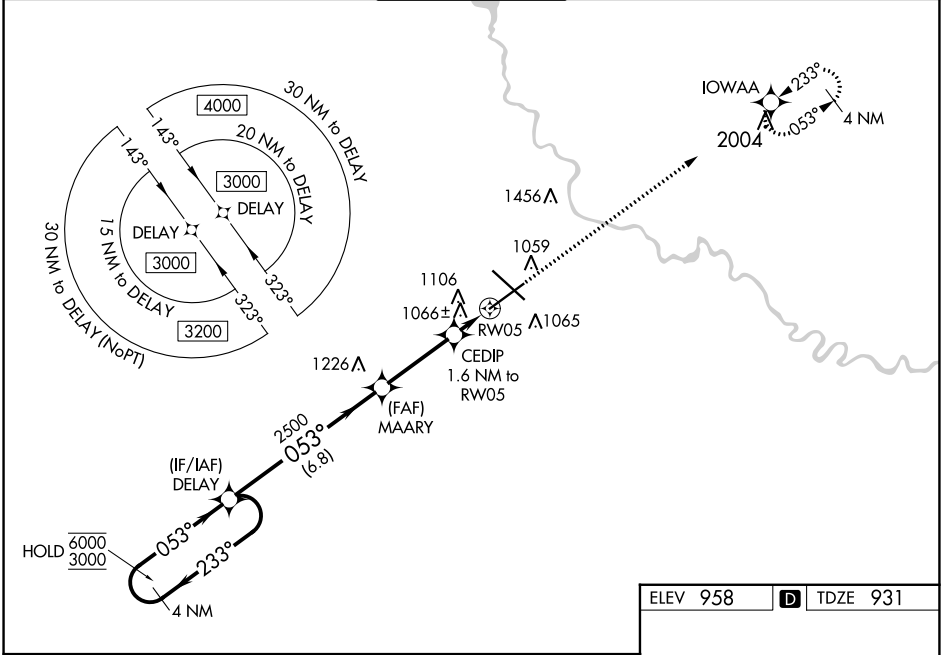
WAAS CH 69202 W05A	APP CRS 053°	Rwy Idg 9004 TDZE 931 Apt Elev 958
--	------------------------	---

RNAV (GPS) RWY 5

DES MOINES INTL (DSM)

RNP APCH - GPS.	MALSR	MISSED APPROACH: Climb to 3100 direct IOWAA and hold.
<p>⚠ For uncompensated Baro-VNAV systems, LNAV/VNAV NA below -22°C or above 54°C. For inop ALS, increase LNAV/VNAV all Cats visibility to RVR 4500. *RVR 1800 authorized with use of FD or AP or HUD to DA (NA when using Ankeny Rgnl altimeter setting).</p>		

ATIS 119.55	DES MOINES APP CON 123.9 307.15	DES MOINES TOWER 118.3 257.8	GND CON 121.9 348.6	CLNC DEL 134.15 317.55
-----------------------	---	--	-------------------------------	----------------------------------



CATEGORY	A	B	C	D
LPV DA *		1131/24	200 (200-½)	
LNAV/VNAV DA		1247/24	316 (300-½)	
LNAV MDA	1320/24	389 (400-½)	1320/35	389 (400-⅝)
C CIRCLING	1420-1	462 (500-1)	1600-1¾ 642 (700-1¾)	1760-2½ 802 (900-2½)

NC-3, 22 FEB 2024 to 21 MAR 2024

NC-3, 22 FEB 2024 to 21 MAR 2024

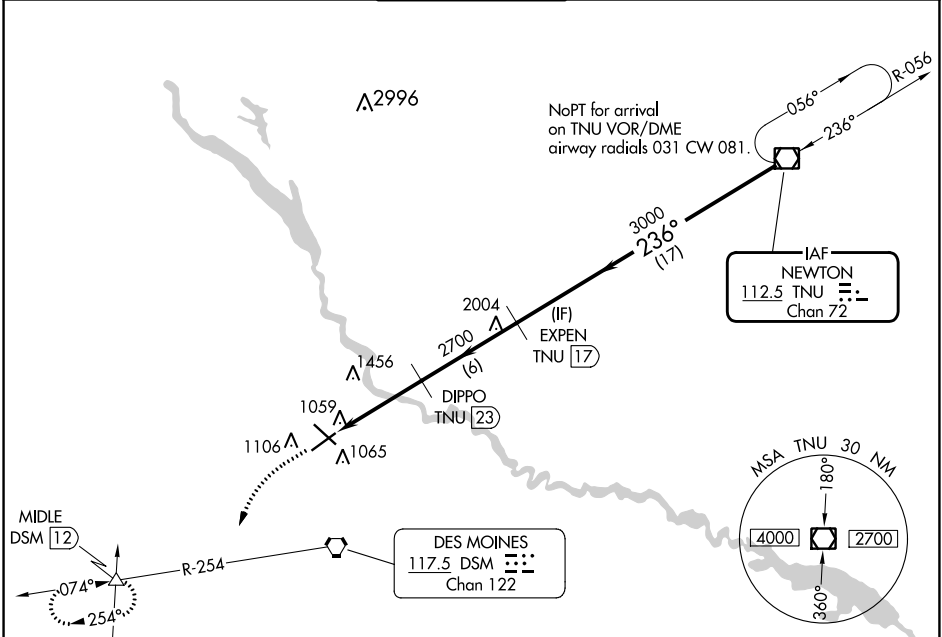
VOR/DME TNU 112.5 Chan 72	APP CRS 236°	Rwy Idg TDZE Apt Elev	9004 939 958
---	------------------------	-----------------------------	---

VOR RWY 23

DES MOINES INTL (DSM)

DME required.	MISSED APPROACH: Climb to 2000 then climbing left turn to 3000 on heading 200° and on DSM VORTAC R-254 direct MIDLE INT/DSM 12 DME and hold.
Rwy 23 helicopter visibility reduction below 3/4 SM NA.	

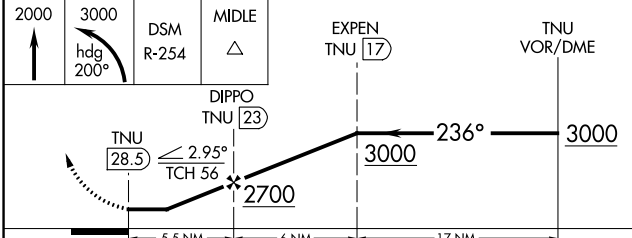
ATIS 119.55	DES MOINES APP CON 123.9 307.15	DES MOINES TOWER 118.3 257.8	GND CON 121.9 348.6	CLNC DEL 134.15 317.55
-----------------------	---	--	-------------------------------	----------------------------------



NC-3, 22 FEB 2024 to 21 MAR 2024

NC-3, 22 FEB 2024 to 21 MAR 2024

ELEV 958	D TDZE 939
----------	-------------------



2000	3000	DSM R-254	MIDLE	EXPEN TNU 17	TNU VOR/DME
------	------	-----------	-------	--------------	-------------

REIL Rwy 5 and 23
TDZ/CL Rwy 31
HIRL Rwy 13-31 and 5-23

CATEGORY	A	B	C	D
S-23	1720-1 781 (800-1)	1720-1 1/4 781 (800-1 1/4)	1720-2 1/2	781 (800-2 1/2)
CIRCLING	1720-1 762 (800-1)	1720-1 1/4 762 (800-1 1/4)	1720-2 1/2	1760-2 1/2 802 (900-2 1/2)