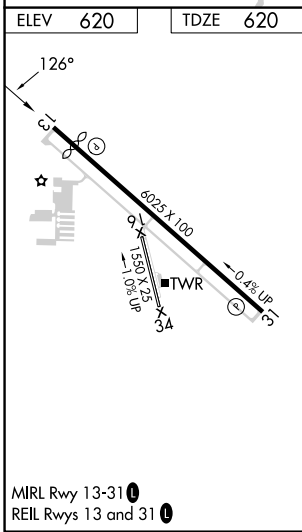
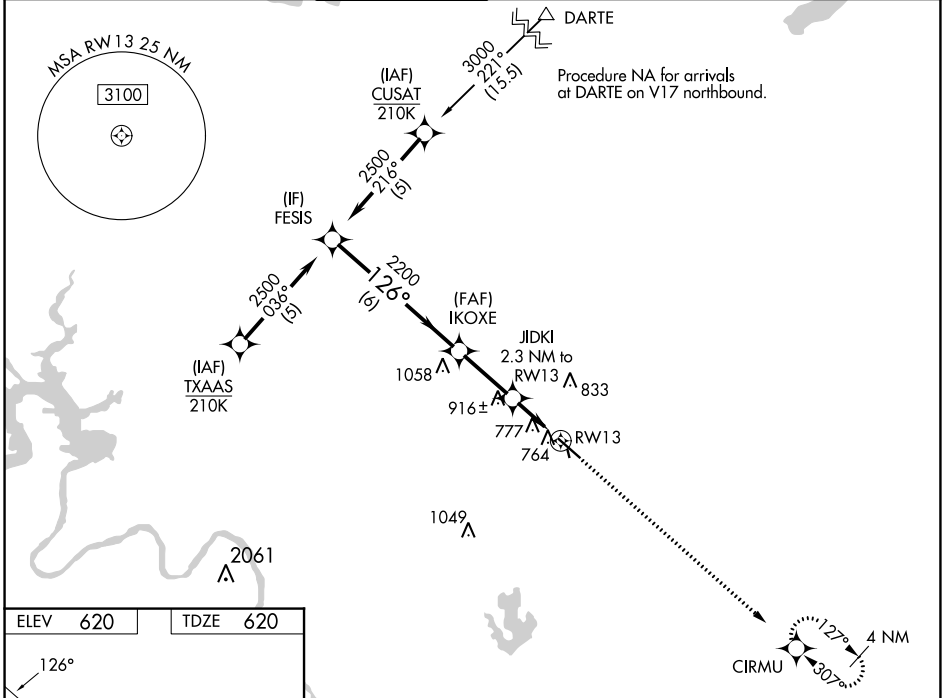


WAAS CH <b>63116</b> <b>W13A</b>	APP CRS <b>126°</b>	Rwy Idg TDZE Apt Elev	<b>5425</b> <b>620</b> <b>620</b>
--	------------------------	-----------------------------	---

# RNAV (GPS) RWY 13

AUSTIN EXEC (EDC)

RNP APCH - GPS.		<p><b>⚠</b> Circling NA to Rwy 16 and 34. Rwy 13 helicopter visibility reduction below <math>\frac{3}{4}</math> SM NA. For uncompensated Baro-VNAV systems, LNAV/VNAV NA below -16°C or above 54°C.</p>		<p>MISSED APPROACH: Climb to 2200 direct CIRMU and hold.</p>	
AWOS-3 <b>118.825</b>	AUSTIN APP CON <b>127.225 317.65</b>	EXECUTIVE TOWER* <b>120.3 (CTAF) 0</b>	GND CON <b>119.45</b>	CLNC DEL <b>126.025</b> (When twr closed)	UNICOM <b>122.975</b>



	FESIS	IKOXE	JIDKI	RWY 13
	2500	2200	1380	2200
		2.3 NM to RWY 13	1.3 NM to RWY 13	4 NM
	GP 3.00° TCH 40			
	6 NM      2.5 NM      1 NM      1.3 NM			
CATEGORY	A	B	C	D
LPV DA		870- $\frac{3}{4}$ 250 (300- $\frac{3}{4}$ )		
LNAV/VNAV DA		1080-1 $\frac{3}{8}$ 460 (500-1 $\frac{3}{8}$ )		
LNAV MDA	1080-1	460 (500-1)	1080-1 $\frac{3}{8}$	460 (500-1 $\frac{3}{8}$ )
<b>C</b> CIRCLING	1140-1 520 (600-1)	1160-1 540 (600-1)	1280-1 $\frac{3}{4}$ 660 (700-1 $\frac{3}{4}$ )	1280-2 660 (700-2)

SC-3, 22 FEB 2024 to 21 MAR 2024

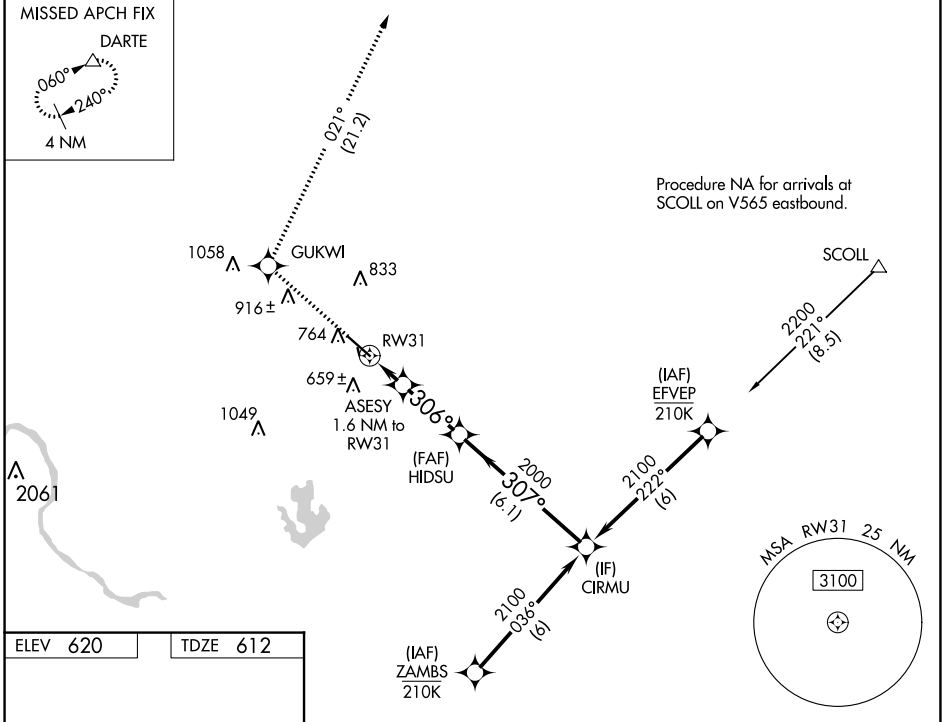
SC-3, 22 FEB 2024 to 21 MAR 2024

WAAS CH <b>45916</b> <b>W31A</b>	APP CRS <b>306°</b>	Rwy Idg <b>6025</b> TDZE <b>612</b> Apt Elev <b>620</b>
--	------------------------	---

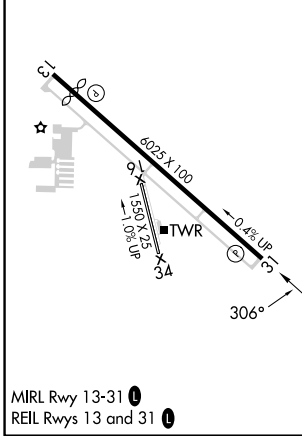
# RNAV (GPS) RWY 31

AUSTIN EXEC (EDC)

RNP APCH - GPS.				MISSED APPROACH: Climb to 3500 direct GUKWI and on track 021° to DARTE and hold.	
AWOS-3 <b>118.825</b>	AUSTIN APP CON <b>127.225 317.65</b>	EXECUTIVE TOWER★ <b>120.3 (CTAF) 0</b>	GND CON <b>119.45</b>	CLNC DEL <b>126.025</b> <small>(When twr closed)</small>	UNICOM <b>122.975</b>



ELEV 620	TDZE 612
----------	----------



3500	GUKWI	tr 021°	DARTE	CIRMU																									
<p>ASESY 1.6 NM to RW31</p> <p>HIDSU 2000</p> <p>0.9 NM to RW31</p> <p>RW31 1140</p> <p>2000</p> <p>307°</p> <p>2100</p> <p>GP 3.00° TCH 40</p>																													
<table border="1"> <tr> <td>CATEGORY</td> <td>A</td> <td>B</td> <td>C</td> <td>D</td> </tr> <tr> <td>LPV DA</td> <td></td> <td>812-3/4</td> <td>200 (200-3/4)</td> <td></td> </tr> <tr> <td>LNAV/VNAV DA</td> <td></td> <td>909-7/8</td> <td>297 (300-7/8)</td> <td></td> </tr> <tr> <td>LNAV MDA</td> <td>920-1</td> <td>308 (300-1)</td> <td>920-7/8</td> <td>308 (300-7/8)</td> </tr> <tr> <td>CIRCLING</td> <td>1140-1 520 (600-1)</td> <td>1160-1 540 (600-1)</td> <td>1280-1 3/4 660 (700-1 3/4)</td> <td>1280-2 660 (700-2)</td> </tr> </table>					CATEGORY	A	B	C	D	LPV DA		812-3/4	200 (200-3/4)		LNAV/VNAV DA		909-7/8	297 (300-7/8)		LNAV MDA	920-1	308 (300-1)	920-7/8	308 (300-7/8)	CIRCLING	1140-1 520 (600-1)	1160-1 540 (600-1)	1280-1 3/4 660 (700-1 3/4)	1280-2 660 (700-2)
CATEGORY	A	B	C	D																									
LPV DA		812-3/4	200 (200-3/4)																										
LNAV/VNAV DA		909-7/8	297 (300-7/8)																										
LNAV MDA	920-1	308 (300-1)	920-7/8	308 (300-7/8)																									
CIRCLING	1140-1 520 (600-1)	1160-1 540 (600-1)	1280-1 3/4 660 (700-1 3/4)	1280-2 660 (700-2)																									

SC-3, 22 FEB 2024 to 21 MAR 2024

SC-3, 22 FEB 2024 to 21 MAR 2024