

LOC/DME I-EDE 110.95 Chan 46(Y)	APP CRS 190°	Rwy Idg 6001 TDZE 20 Apt Elev 20
---	------------------------	---

ILS or LOC RWY 19

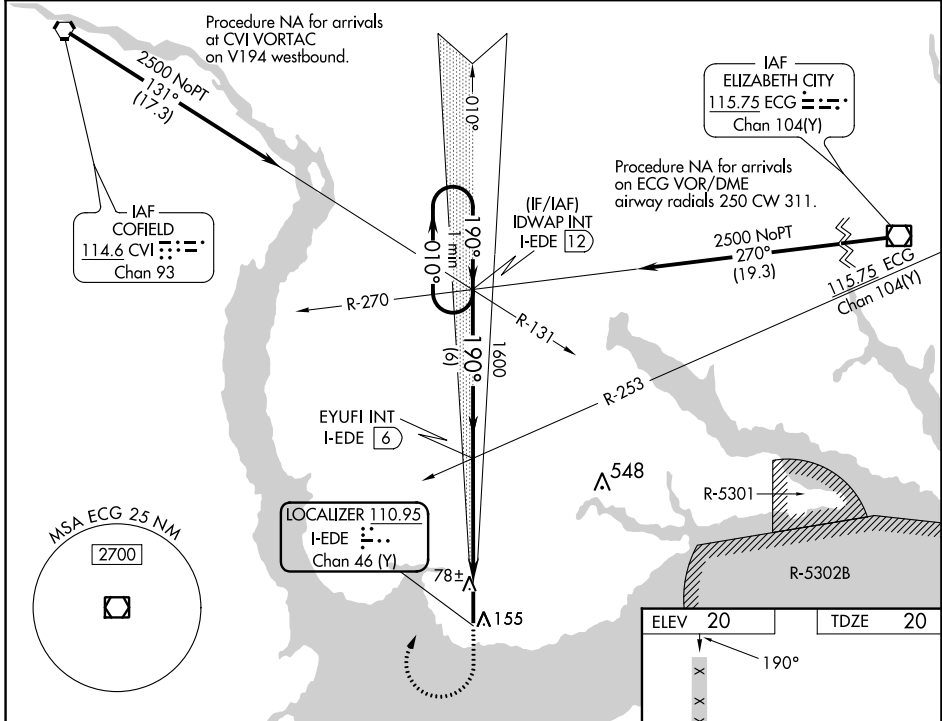
NORTHEASTERN RGNL (E/D/E)

DME or RADAR required for procedure entry.

⚠ When local altimeter setting not received, use Elizabeth City altimeter setting and increase all DA 56 feet and all MDA 60 feet and increase S-ILS 19 all Cats and S-LOC 19 Cats C/D visibility 1/8 mile. VDP NA when using Elizabeth City altimeter setting.

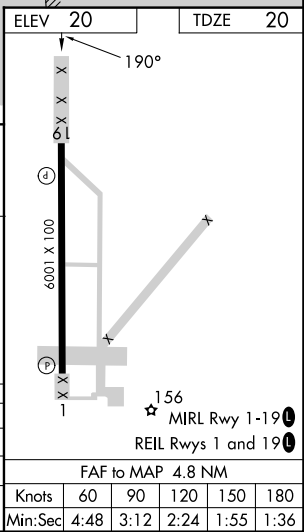
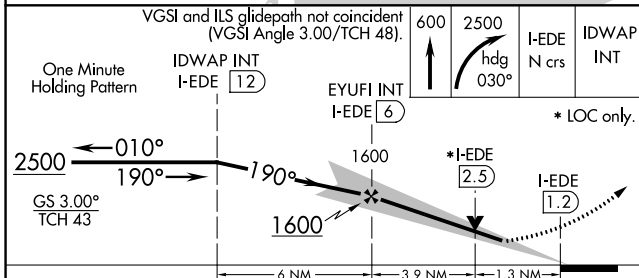
MISSED APPROACH: Climb to 600 then climbing right turn to 2500 on heading 030° and I-EDE localizer N course to IDWAP INT/I-EDE 12 DME and hold.

AWOS-3 118.275	WASHINGTON CENTER 123.85 279.65	UNICOM 123.0 (CTAF) 0
--------------------------	---	---------------------------------



SE-2, 22 FEB 2024 to 21 MAR 2024

SE-2, 22 FEB 2024 to 21 MAR 2024



CATEGORY	A	B	C	D
S-ILS 19		220-3/4	200 (200-3/4)	
S-LOC 19	480-1	460 (500-1)	480-1 3/8	460 (500-1 3/8)
CIRCLING	520-1	500 (500-1)	560-1 1/2	580-2
			540 (600-1 1/2)	560 (600-2)

FAF to MAP 4.8 NM					
Knots	60	90	120	150	180
Min:Sec	4:48	3:12	2:24	1:55	1:36

APP CRS 025°	Rwy Idg 6001
	TDZE 19
	Apt Elev 19

RNAV (GPS) RWY 1

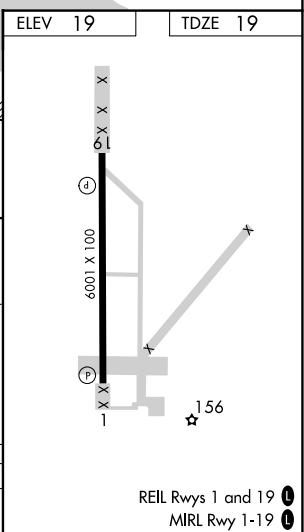
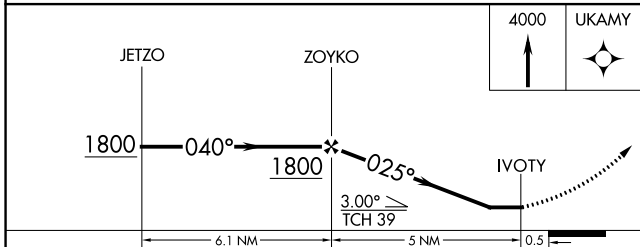
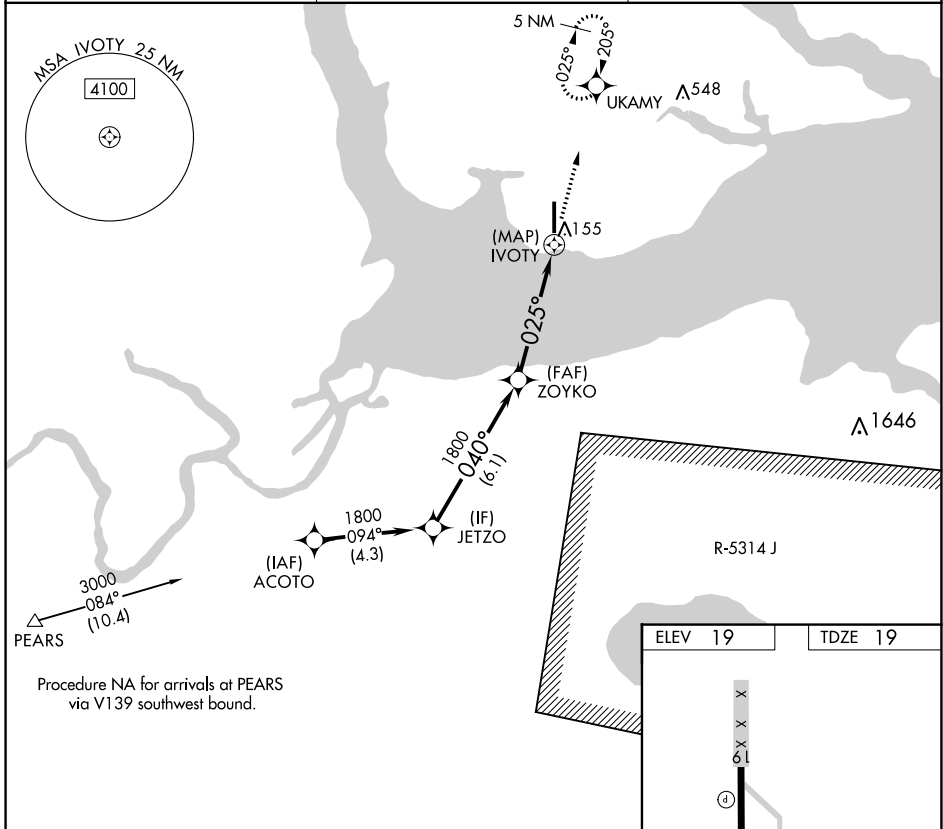
NORTHEASTERN RGNL (EDE)

RNP APCH-GPS.

⚠ If local altimeter setting not received, use Elizabeth City altimeter setting and increase all MDAs 60 feet. Rwy 1 helicopter visibility reduction below 1 SM NA. Procedure NA at night.

MISSED APPROACH: Climb to 4000 direct UKAMY and hold, continue climb-in-hold to 4000.

AWOS-3 118.275	WASHINGTON CENTER 123.85 279.65	UNICOM 123.0 (CTAF) 0
--------------------------	---	---------------------------------



CATEGORY	A	B	C	D
LNAV MDA	460-1	441 (500-1)	460-1 $\frac{3}{8}$ 441 (500-1 $\frac{3}{8}$)	460-1 $\frac{1}{2}$ 441 (500-1 $\frac{1}{2}$)

SE-2, 22 FEB 2024 to 21 MAR 2024

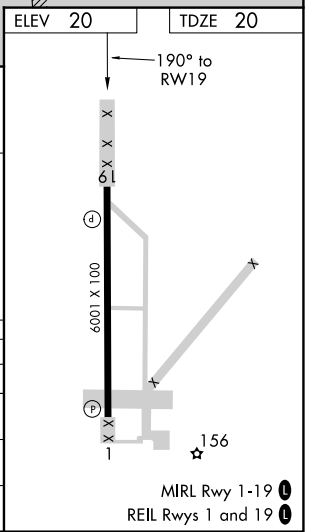
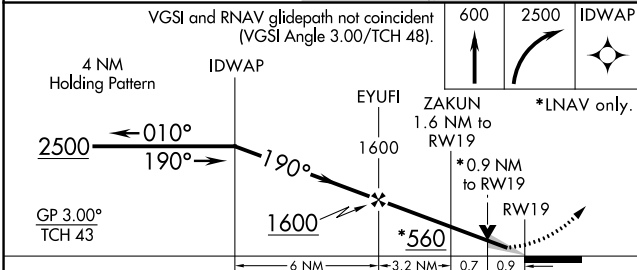
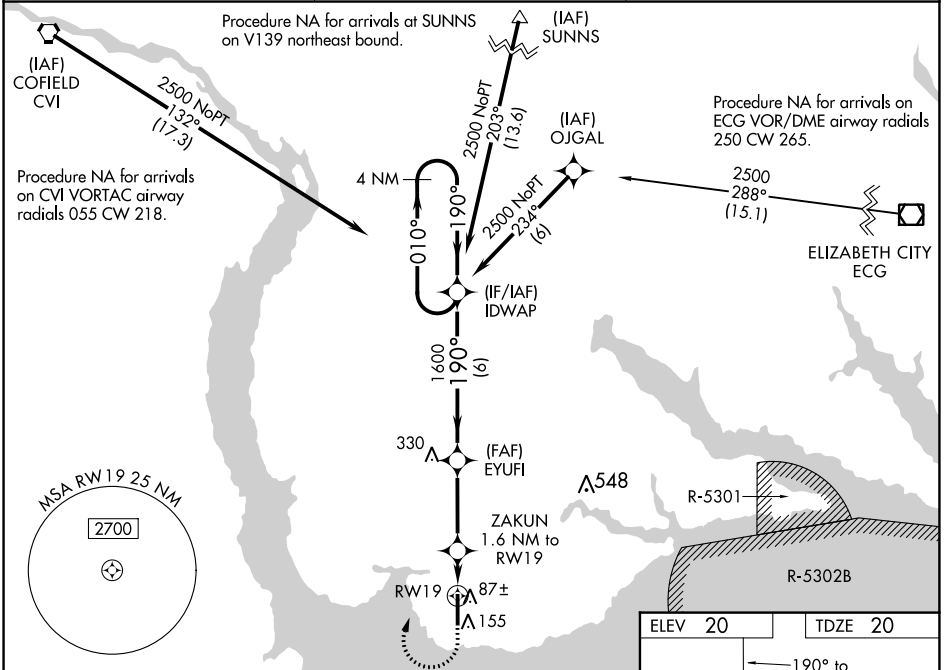
SE-2, 22 FEB 2024 to 21 MAR 2024

WAAS CH 90503 W19A	APP CRS 190°	Rwy Idg TDZE Apt Elev	6001 20 20
--	------------------------	-----------------------------	---------------------------------------

RNAV (GPS) RWY 19

NORTHEASTERN RGNL (E/D/E)

RNP APCH.		<p>Baro-VNAV NA when using Elizabeth City altimeter setting. For uncompensated Baro-VNAV systems, LNAV/VNAV NA below -15°C or above 43°C. When local altimeter setting not received, use Elizabeth City altimeter setting and increase LPV DA to 275 LNAV/VNAV DA to 325 and all MDA 60 feet, increase LPV all Cats and LNAV Cat C/D visibility 1/8 mile and LNAV/VNAV visibility all Cats 1/4 mile. VDP NA when using Elizabeth City altimeter setting.</p>		<p>MISSED APPROACH: Climb to 600 then right turn to 2500 direct IDWAP and hold.</p>	
AWOS-3 118.275		WASHINGTON CENTER 123.85 279.65		UNICOM 123.0 (CTAF) 0	



CATEGORY	A	B	C	D
LPV DA		220-3/4	200 (200-3/4)	
LNAV/VNAV DA		270-3/4	250 (300-3/4)	
LNAV MDA		340-1	320 (400-1)	
CIRCLING	520-1	500 (500-1)	560-1 1/2 540 (600-1 1/2)	580-2 560 (600-2)

SE-2, 22 FEB 2024 to 21 MAR 2024

SE-2, 22 FEB 2024 to 21 MAR 2024