

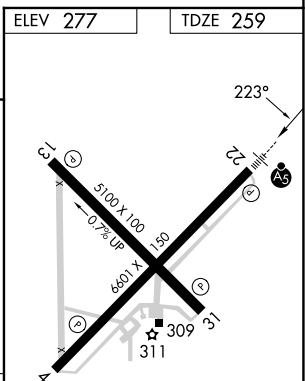
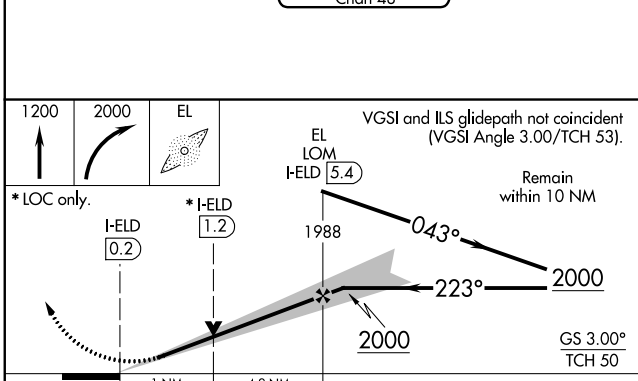
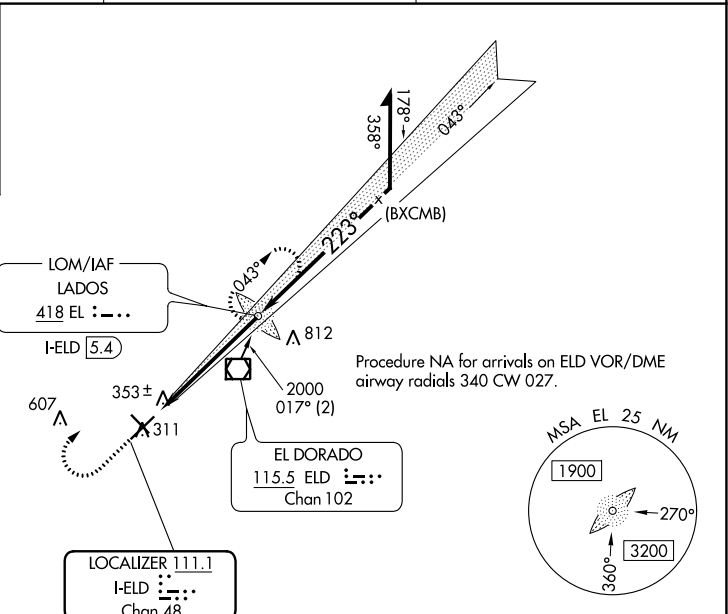
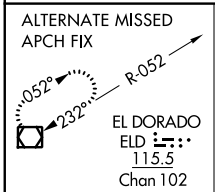
LOC/DME I-ELD 111.1 Chan 48	APP CRS 223°	Rwy Idg 6601 TDZE 259 Apt Elev 277
---	------------------------	---

ILS or LOC RWY 22

SOUTH ARKANSAS RGNL AT GOODWIN FLD (E.L.D)

ADF required.	MALSR 	MISSED APPROACH: Climb to 1200 then climbing right turn to 2000 direct LADOS LOM and hold.
NA Circling Rwy 4, 13, 31 NA at night.		

ASOS 118,325	FORT WORTH CENTER 128.2 269.1	UNICOM 123.0 (CTAF)
------------------------	---	-------------------------------



CATEGORY	A	B	C	D
S-ILS 22	459-1/2 200 (200-1/2)			
S-LOC 22	620-1/2 361 (400-1/2)		620-3/4 361 (400-3/4)	
CIRCLING	740-1 463 (500-1)	920-1 3/4 643 (700-1 3/4)	920-2 643 (700-2)	

FAF to MAP 5.2 NM					
Knots	60	90	120	150	180
Min:Sec	5:12	3:28	2:36	2:05	1:44

ILS or LOC RWY 22

SC-1, 22 FEB 2024 to 21 MAR 2024

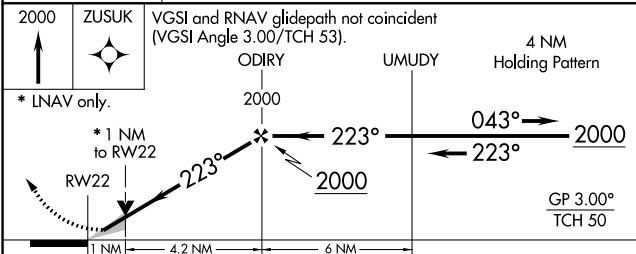
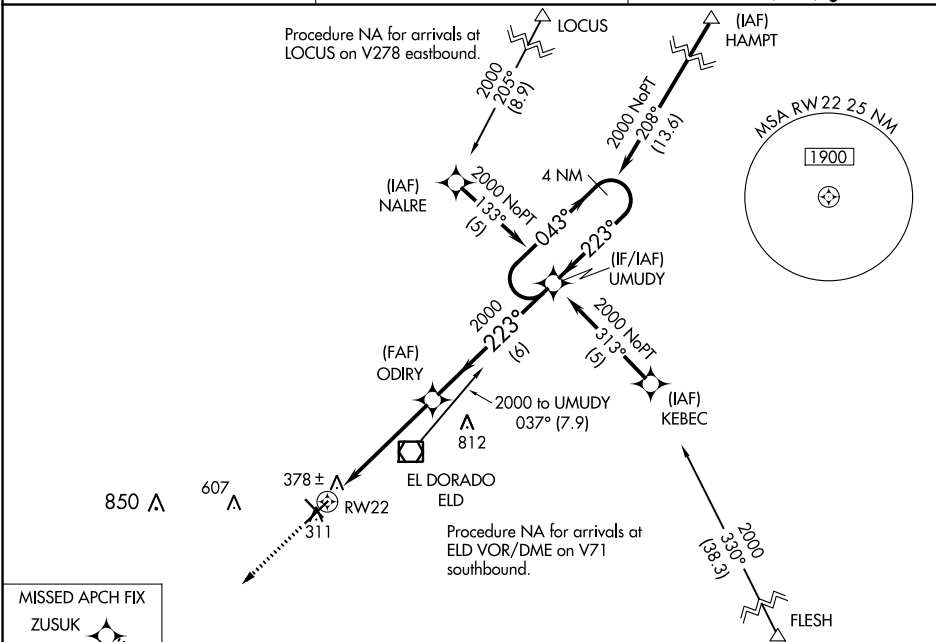
SC-1, 22 FEB 2024 to 21 MAR 2024

WAAS CH 77521 W22A	APP CRS 223°	Rwy Idg 6601 TDZE 259 Apt Elev 277
--	------------------------	---

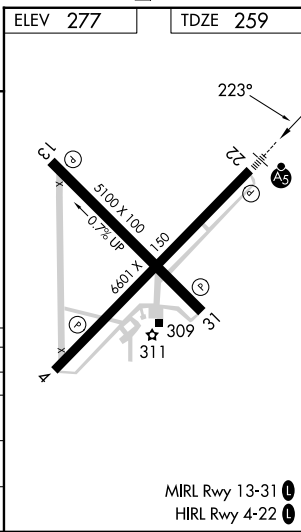
RNAV (GPS) RWY 22

SOUTH ARKANSAS RGNL AT GOODWIN FLD (ELD)

RNP APCH. ▼ For uncompensated Baro-VNAV systems, LNAV/VNAV NA below -15°C or above 54°C. For inop ALS, increase LPV all Cats visibility to 1 1/8 SM, increase LNAV/VNAV all Cats visibility to 1 1/4 SM. Circling Rwy 4, 13, 31, NA at night.	MALS R AS	MISSED APPROACH: Climb to 2000 direct ZUSUK and hold.
ASOS 118.325	FORT WORTH CENTER 128.2 269.1	UNICOM 123.0 (CTAF) 0



CATEGORY	A	B	C	D
LPV DA	602-5/8 343 (400-5/8)			
LNAV/VNAV DA	650-7/8 391 (400-7/8)			
LNAV MDA	640-1/2 381 (400-1/2)	640-5/8 381 (400-5/8)		
CIRCLING	740-1 463 (500-1)	920-1 1/4 643 (700-1 1/4)	920-2 643 (700-2)	



SC-1, 22 FEB 2024 to 21 MAR 2024

SC-1, 22 FEB 2024 to 21 MAR 2024

APP CRS 043°	Rwy Idg 6601
	TDZE 260
	Apt Elev 277

RNAV (GPS) RWY 4

SOUTH ARKANSAS RGNL AT GOODWIN FLD (ELD)

RNP APCH.

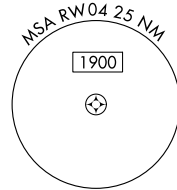
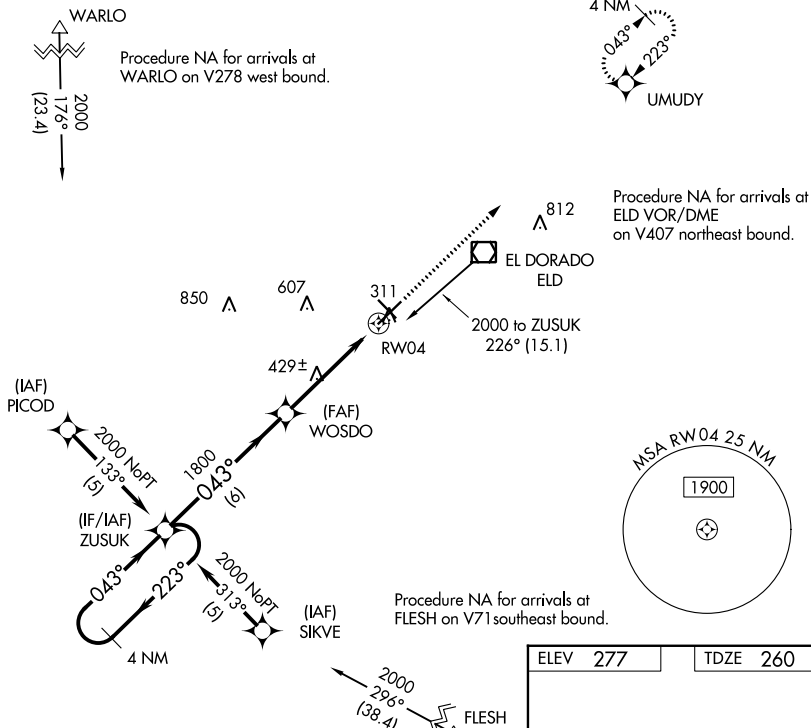
▼ Straight-in Rwy 4 NA at night, Circling Rwy 4, 13, 31 NA at night.
Rwy 4 helicopter visibility below 1 SM NA.

MISSED APPROACH: Climb to 2000
direct UMUDY and hold.

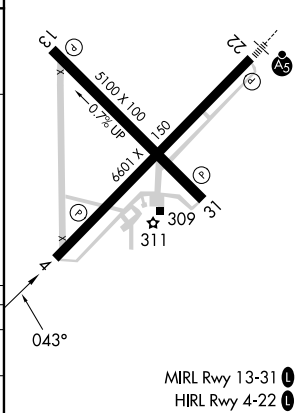
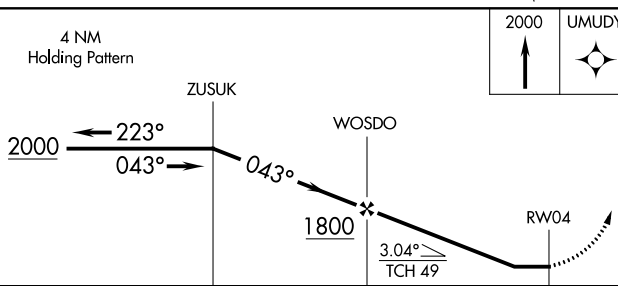
ASOS
118.325

FORT WORTH CENTER
128.2 269.1

UNICOM
123.0 (CTAF) **0**



ELEV 277	TDZE 260
----------	----------



CATEGORY	A	B	C	D
RNAV MDA	680-1	420 (500-1)	680-1¼	420 (500-1¼)
CIRCLING	740-1	463 (500-1)	920-1¼ 643 (700-1¼)	920-2 643 (700-2)

MIRL Rwy 13-31 **0**
HIRL Rwy 4-22 **0**

SC-1, 22 FEB 2024 to 21 MAR 2024

SC-1, 22 FEB 2024 to 21 MAR 2024

VOR/DME ELD 115.5 Chan 102	APP CRS 049°	Rwy Idg 6601 TDZE 260 Apt Elev 277
--	------------------------	---

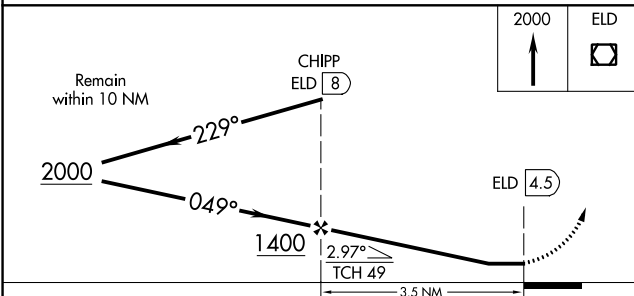
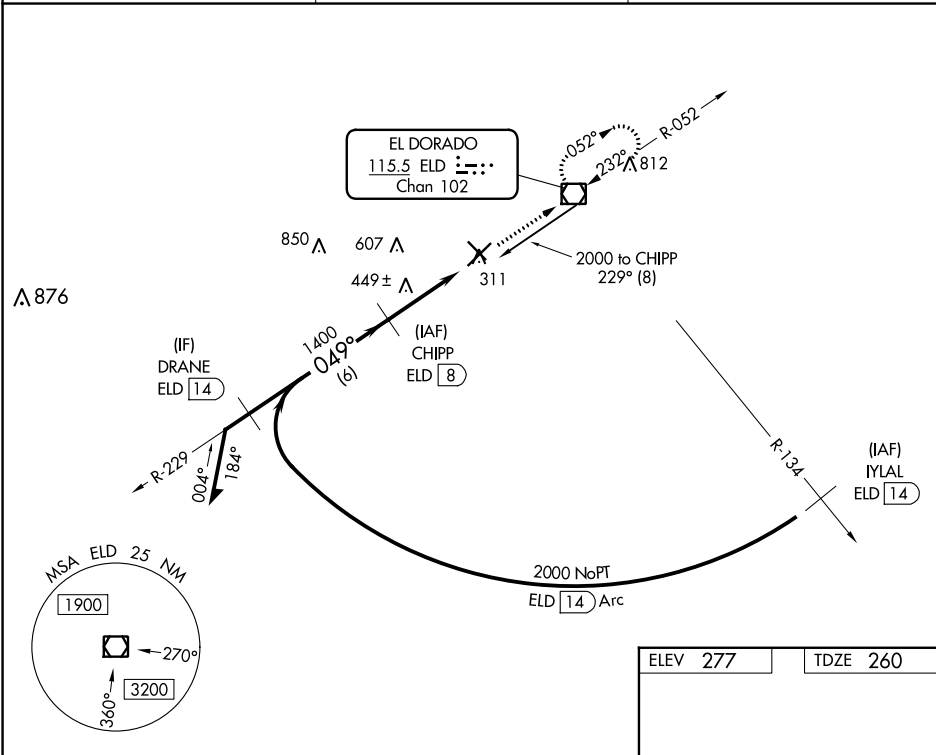
VOR/DME RWY 4

SOUTH ARKANSAS RGNL AT GOODWIN FLD (ELD)

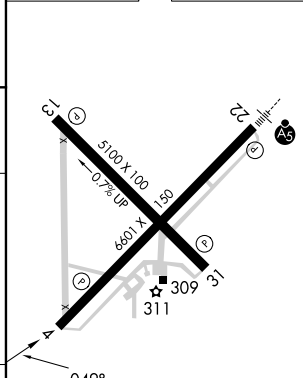
▼ Straight-in Rwy 4 NA at night, Circling Rwy 4, 13, 31 NA at night. Rwy 4 helicopter visibility reduction below 1 SM NA.

MISSED APPROACH: Climb to 2000 direct ELD VOR/DME and hold.

ASOS 118.325	FORT WORTH CENTER 128.2 269.1	UNICOM 123.0 (CTAF) 0
------------------------	---	---------------------------------



ELEV 277	TDZE 260
----------	----------



CATEGORY	A	B	C	D
S-4	700-1	440 (500-1)	700-1¼ 440 (500-1¼)	700-1½ 440 (500-1½)
CIRCLING	740-1	463 (500-1)	920-1¾ 643 (700-1¾)	920-2 643 (700-2)

MIRL Rwy 13-31 0
HIRL Rwy 4-22 0

VOR/DME RWY 4

SC-1, 22 FEB 2024 to 21 MAR 2024

SC-1, 22 FEB 2024 to 21 MAR 2024