

WAAS CH <b>56334</b> <b>W15A</b>	APP CRS <b>154°</b>	Rwy Idg TDZE Apt Elev	<b>4200</b> <b>1378</b> <b>1379</b>
--	------------------------	-----------------------------	---

# RNAV (GPS) RWY 15

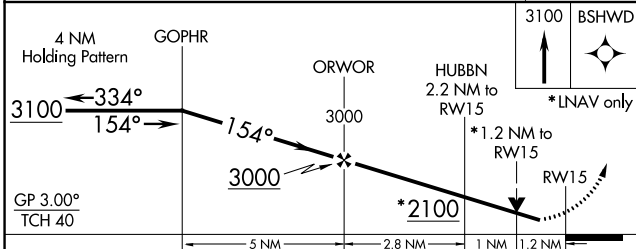
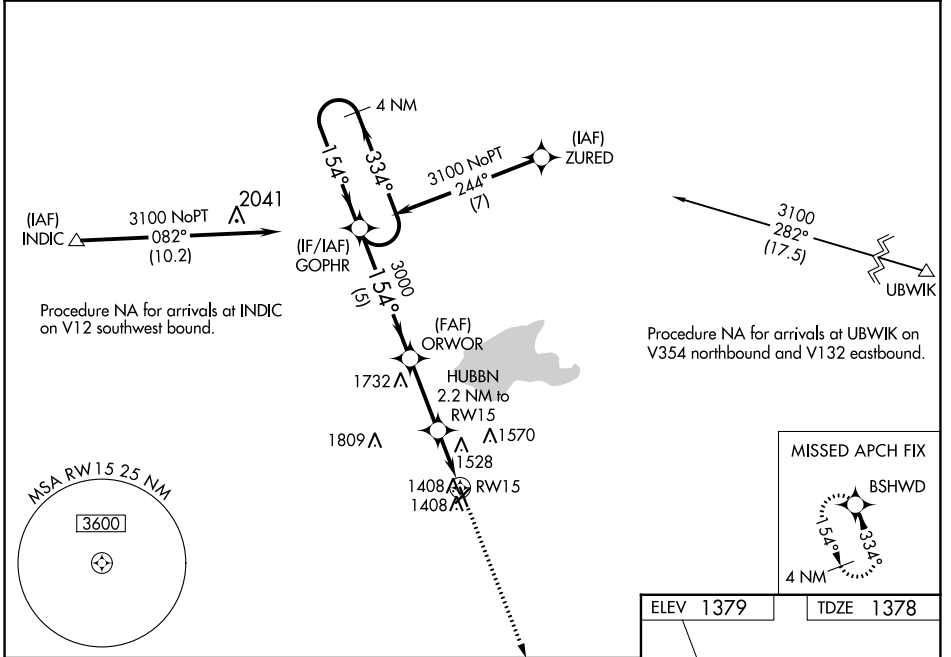
EL DORADO/CAPT JACK THOMAS MEML (EQA)

RNP APCH-GPS.

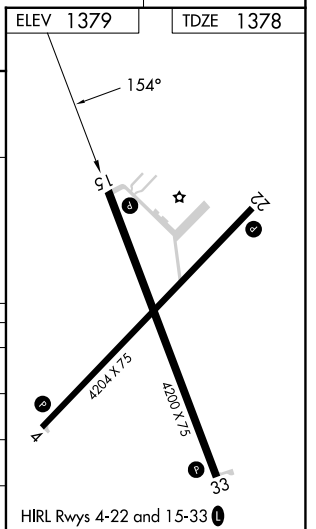
**NA** For uncompensated Baro-VNAV systems, LNAV/VNAV NA below -17°C or above 54°C. Rwy 15 helicopter visibility reduction below 3/4 SM NA. When local altimeter setting not received, use Colonel James Jabara altimeter setting and increase all DA 51 feet and all MDA 60 feet; increase LNAV/VNAV all Cats visibility 1/8 mile. Baro-VNAV and VDP NA when using Colonel James Jabara altimeter setting.

MISSED APPROACH:  
Climb to 3100 direct BSHWD and hold.

AWOS-3P <b>120.875</b>	WICHITA APP CON <b>134.8 269.1</b>	UNICOM <b>122.8 (CTAF)</b>
---------------------------	---------------------------------------	-------------------------------



CATEGORY	A	B	C	D
LPV DA	1628-1	250 (300-1)		NA
LNAV/VNAV DA	1843-1 1/2	465 (500-1 1/2)		NA
LNAV MDA	1780-1	402 (500-1)		NA
<b>C</b> CIRCLING	1820-1 441 (500-1)	1960-1 581 (600-1)		NA



NC-2, 22 FEB 2024 to 21 MAR 2024

NC-2, 22 FEB 2024 to 21 MAR 2024

WAAS CH <b>97434</b> <b>W22A</b>	APP CRS <b>218°</b>	Rwy Idg TDZE Apt Elev	<b>4204</b> <b>1378</b> <b>1379</b>
--	------------------------	-----------------------------	---

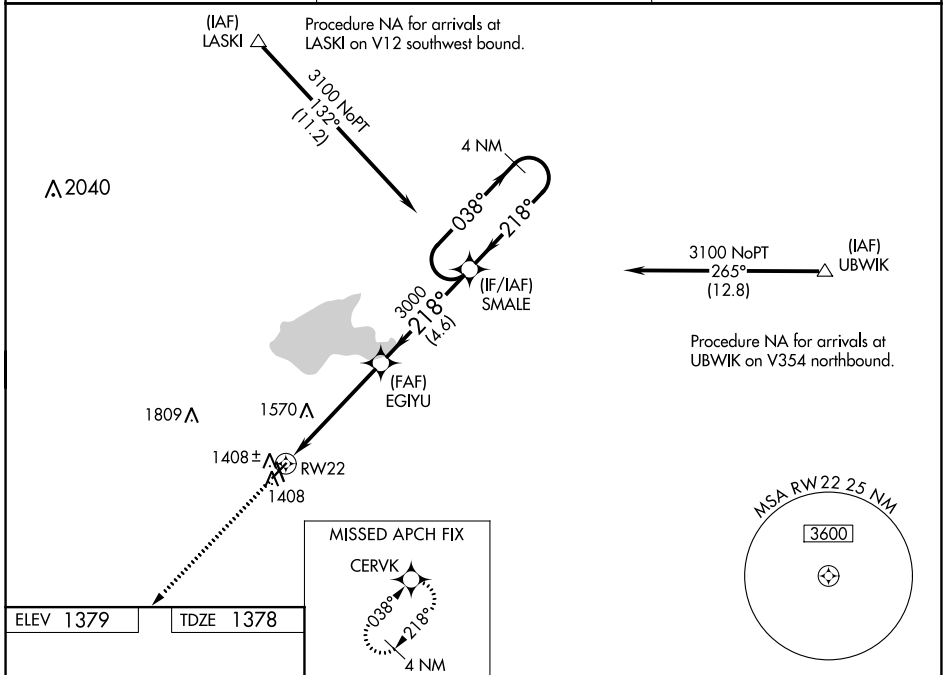
# RNAV (GPS) RWY 22

EL DORADO/CAPT JACK THOMAS MEML (EQA)

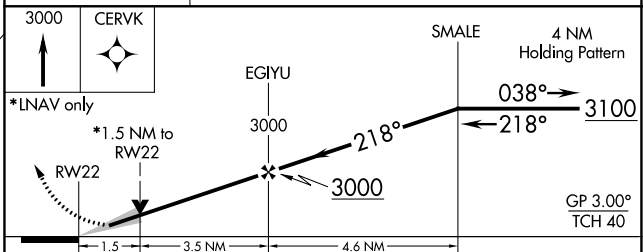
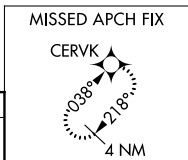
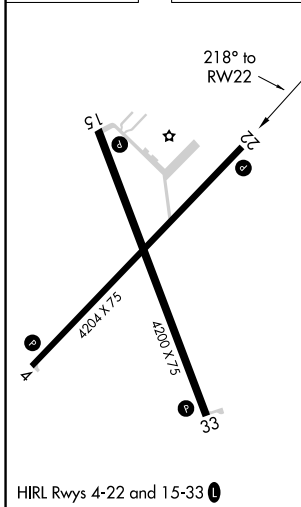
**⚠ NA** For uncompensated Baro-VNAV systems, LNAV/VNAV NA below -17°C (2°F) or above 54°C (130°F). DME/DME RNP-0.3 NA. When local altimeter setting not received, use Colonel James Jabara altimeter setting and increase all DA 51 feet and all MDA 60 feet; increase LNAV/VNAV all Cats visibility 1/8 mile. Baro-VNAV and VDP NA when using Colonel James Jabara altimeter setting.

**MISSED APPROACH:** Climb to 3000 direct CERVK and hold.

AWOS-3P <b>120.875</b>	WICHITA APP CON <b>134.8 269.1</b>	UNICOM <b>122.8 (CTAF) 0</b>
---------------------------	---------------------------------------	---------------------------------



ELEV 1379	TDZE 1378
-----------	-----------



CATEGORY	A	B	C	D
LPV DA	1578-1	200 (200-1)		NA
LNAV/VNAV DA	1671-1	293 (300-1)		NA
LNAV MDA	1900-1	522 (600-1)		NA
<b>C</b> CIRCLING	1900-1 521 (600-1)	1960-1 581 (600-1)		NA

NC-2, 22 FEB 2024 to 21 MAR 2024

NC-2, 22 FEB 2024 to 21 MAR 2024

WAAS CH <b>70434</b> <b>W33A</b>	APP CRS <b>334°</b>	Rwy Idg TDZE Apt Elev	<b>4200</b> <b>1379</b> <b>1379</b>
--	------------------------	-----------------------------	---

# RNAV (GPS) RWY 33

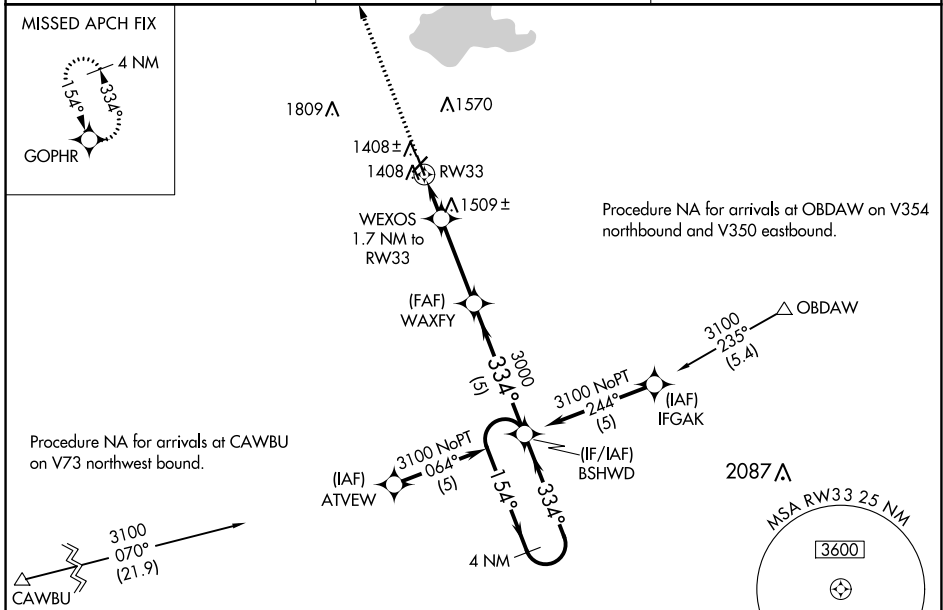
EL DORADO/CAPT JACK THOMAS MEML (EQA)

RNP APCH-GPS.

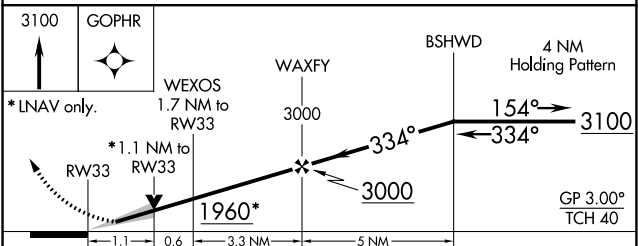
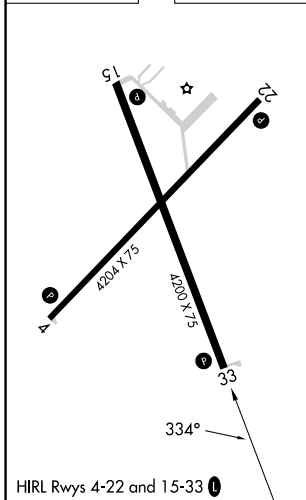
**NA** For uncompensated Baro-VNAV systems, LNAV/VNAV NA below -17°C or above 54°C. When local altimeter setting not received, use Colonel James Jabara altimeter setting and increase all DA 51 feet and all MDA 60 feet. Baro-VNAV and VDP NA when using Colonel James Jabara altimeter setting.

MISSED APPROACH: Climb to 3100 direct GOPHR and hold.

AWOS-3P <b>120.875</b>	WICHITA APP CON <b>134.8 269.1</b>	UNICOM <b>122.8 (CTAF)</b>
---------------------------	---------------------------------------	-------------------------------



ELEV 1379	TDZE 1379
-----------	-----------



CATEGORY	A	B	C	D
LPV DA	1579-1	200 (200-1)		NA
LNAV/VNAV DA	1629-1	250 (300-1)		NA
LNAV MDA	1760-1	381 (400-1)		NA
<b>CIRCLING</b>	1820-1 441 (500-1)	1960-1 581 (600-1)		NA

NC-2, 22 FEB 2024 to 21 MAR 2024

NC-2, 22 FEB 2024 to 21 MAR 2024

WAAS CH <b>99334</b> <b>W04A</b>	APP CRS <b>038°</b>	Rwy ldg TDZE Apt Elev	<b>4204</b> <b>1376</b> <b>1379</b>
--	------------------------	-----------------------------	---

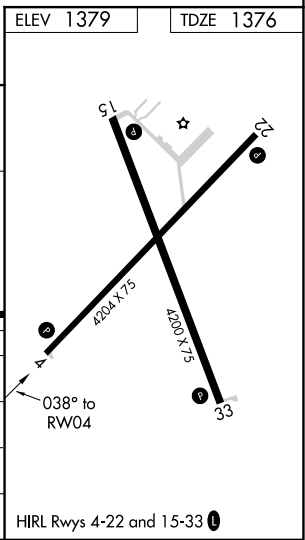
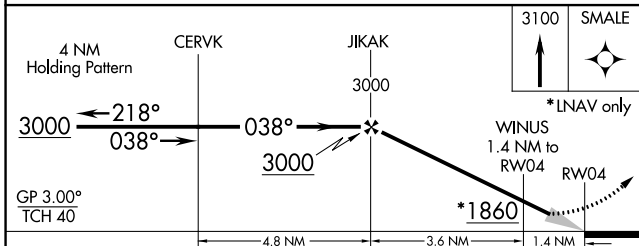
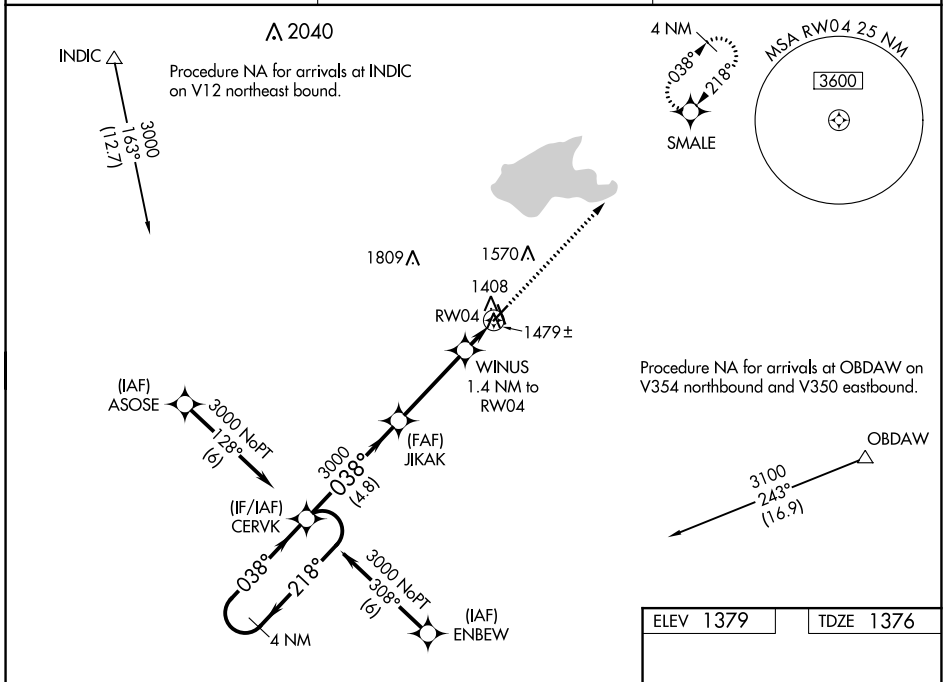
# RNAV (GPS) RWY 4

EL DORADO/CAPT JACK THOMAS MEML (EQA)

**NA** For uncompensated Baro-VNAV systems, LNAV/VNAV NA below -17°C (2°F) or above 54°C (130°F). DME/DME RNP-0.3 NA. When local altimeter setting not received, use Colonel James Jabara altimeter setting and increase all DA 51 feet and all MDA 60 feet. Baro-VNAV NA when using Colonel James Jabara altimeter setting.

**MISSED APPROACH:** Climb to 3100 direct SMALE and hold.

AWOS-3P <b>120.875</b>	WICHITA APP CON <b>134.8 269.1</b>	UNICOM <b>122.8 (CTAF) 0</b>
---------------------------	---------------------------------------	---------------------------------



CATEGORY	A	B	C	D
LPV DA	1576-1	200 (200-1)		NA
LNAV/VNAV DA	1626-1	250 (300-1)		NA
LNAV MDA	1740-1	364 (400-1)		NA
<b>CIRCLING</b>	1820-1 441 (500-1)	1960-1 581 (600-1)		NA

NC-2, 22 FEB 2024 to 21 MAR 2024

NC-2, 22 FEB 2024 to 21 MAR 2024