

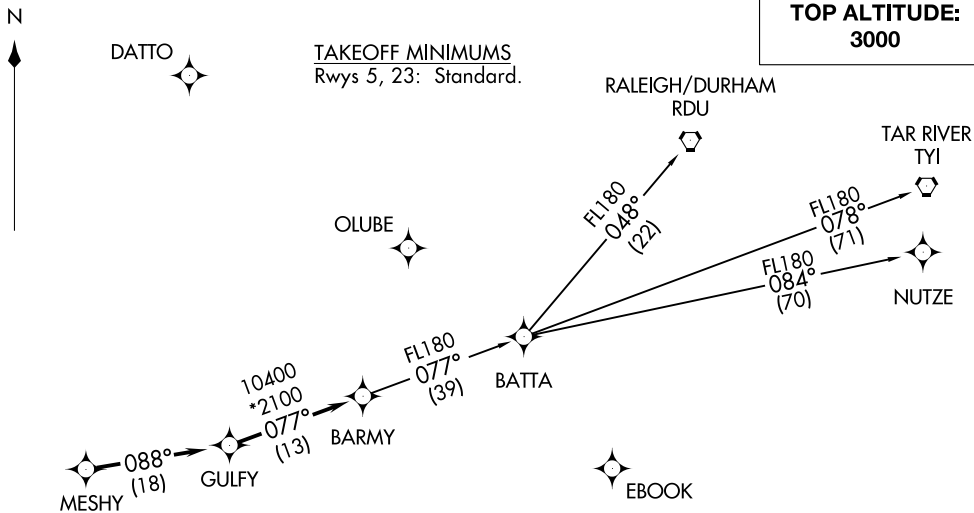
BARMY FOUR DEPARTURE (RNAV)
(BARMY4.BARMY) 03JAN19

CHARLOTTE/MONROE EXEC (EQY)
MONROE, NORTH CAROLINA

ASOS
135.775
CLNC DEL
132.55
UNICOM (CTAF)
122.7
CHARLOTTE DEP CON
120.05 307.8

**TOP ALTITUDE:
3000**

TAKEOFF MINIMUMS
Rwys 5, 23: Standard.



DEPARTURE ROUTE DESCRIPTION

Climb on heading assigned by ATC, expect RADAR vectors to MESHY, then on depicted route to BARMY. Then on assigned transition. Maintain 3000, expect clearance to filed altitude within 10 minutes after departure.

- NUTZE TRANSITION (BARMY4.NUTZE)
- RALEIGH/DURHAM TRANSITION (BARMY4.RDU)
- TAR RIVER TRANSITION (BARMY4.TYI)

- NOTE: For turbojets only.
- NOTE: DME/DME/IRU or GPS required.
- NOTE: RNAV 1.
- NOTE: RADAR required.
- NOTE: If unable to accept climb rates, advise ATC on initial contact.
- NOTE: Transponder code will be issued via PDC or Charlotte CLNC DEL.
- NOTE: Upon reaching 10000 MSL, accelerate to and maintain 280K, if unable advise ATC.

NOTE: Chart not to scale.

(BARMY4.BARMY) 22083
BARMY FOUR DEPARTURE (RNAV)

A1-5726 (FAA)

CHARLOTTE/MONROE EXEC (EQY)
MONROE, NORTH CAROLINA

(BEAVY5.BEAVY) 22083

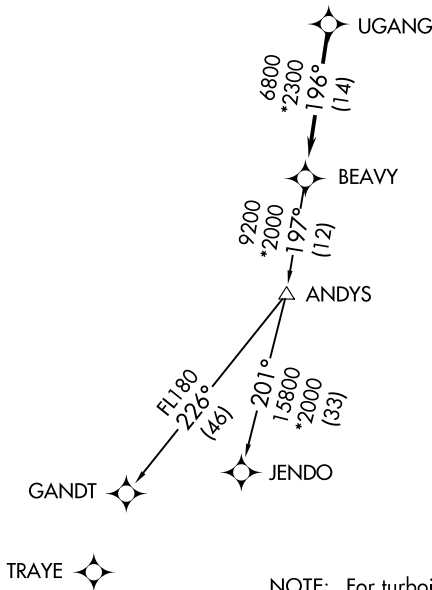
AL-5726 (FAA)

CHARLOTTE/MONROE EXEC (EQY)
MONROE, NORTH CAROLINA

BEAVY FIVE DEPARTURE (RNAV)

ASOS
135.775
CLNC DEL
132.55
132.55
UNICOM (CTAF)
122.7
CHARLOTTE DEP CON
120.05 307.8

**TOP ALTITUDE:
3000**



TAKEOFF MINIMUMS
Rwys 5, 23: Standard.

SE-2, 22 FEB 2024 to 21 MAR 2024

SE-2, 22 FEB 2024 to 21 MAR 2024

- NOTE: For turbojets only.
- NOTE: DME/DME/IRU or GPS required.
- NOTE: RNAV 1.
- NOTE: RADAR required.
- NOTE: If unable to accept climb rates, advise ATC on initial contact.
- NOTE: Upon reaching 10000 MSL, accelerate to and maintain 280K, if unable advise ATC.
- NOTE: Transponder code will be issued via PDC or Charlotte CLNC DEL.

NOTE: Chart not to scale.

DEPARTURE ROUTE DESCRIPTION

Climb on heading assigned by ATC, expect RADAR vectors to UGANG, then on track 196° to BEAVY. Then on assigned transition. Maintain 3000, expect clearance to filed altitude within 10 minutes after departure.

GANDT TRANSITION (BEAVY5.GANDT)
JENDO TRANSITION (BEAVY5.JENDO)

BEAVY FIVE DEPARTURE (RNAV)
(BEAVY5.BEAVY) 03JAN19

MONROE, NORTH CAROLINA
CHARLOTTE/MONROE EXEC (EQY)

BOBZY FOUR DEPARTURE (RNAV)
(BOBZY4.BOBZY) 03JAN19

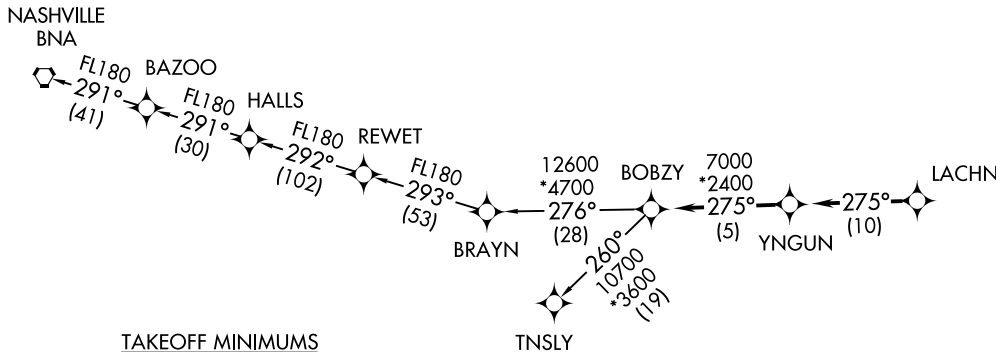
(BOBZY4.BOBZY) 22083
BOBZY FOUR DEPARTURE (RNAV)

A4-5726 (FAA)

CHARLOTTE/MONROE EXEC (EQY)
MONROE, NORTH CAROLINA

ASOS 135.775
CLNC DEL 132.55
UNICOM (CTAF) 122.7
CHARLOTTE DEP CON 120.05 307.8

TOP ALTITUDE:
3000



TAKEOFF MINIMUMS
Rwys 5, 23: Standard.



DEPARTURE ROUTE DESCRIPTION

▼

Climb on heading assigned by ATC, expect RADAR vectors to LACHN, then on depicted route to BOBZY, then on assigned transition. Maintain 3000. Expect clearance to filed altitude within 10 minutes after departure.

NASHVILLE TRANSITION (BOBZY4.BNA)
TNSLY TRANSITION (BOBZY4.TNSLY)

- NOTE: For turbojets only.
- NOTE: DME/DME/IRU or GPS required.
- NOTE: RNAV 1.
- NOTE: RADAR required.
- NOTE: If unable to accept climb rates, advise ATC on initial contact.
- NOTE: Upon reaching 10000 MSL, accelerate to and maintain 280K, if unable advise ATC.

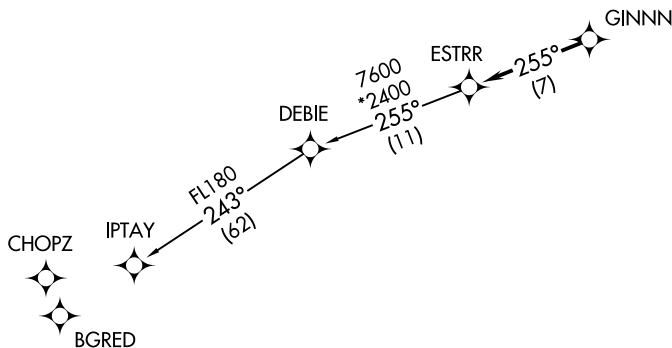
NOTE: Chart not to scale.

MONROE, NORTH CAROLINA
CHARLOTTE/MONROE EXEC (EQY)

ESTRR FOUR DEPARTURE (RNAV)

**TOP ALTITUDE:
3000**

ASOS 135.775
CLNC DEL 132.55
UNICOM (CTAF) 122.7
CHARLOTTE DEP CON 120.05 307.8



TAKEOFF MINIMUMS
Rwys 5, 23: Standard.

- NOTE: For turbojets only.
- NOTE: DME/DME/IRU or GPS required.
- NOTE: RNAV 1.
- NOTE: RADAR required.
- NOTE: If unable to accept climb rates, advise ATC on initial contact.
- NOTE: Upon reaching 10000 MSL, accelerate to and maintain 280K, if unable advise ATC.

NOTE: Chart not to scale.



DEPARTURE ROUTE DESCRIPTION

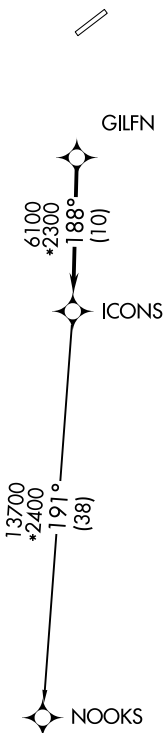
Climb on heading assigned by ATC, expect RADAR vectors to GINNN, then on track 255° to ESTRR, then on IPTAY transition. Maintain 3000, expect clearance to filed altitude within 10 minutes after departure.

IPTAY TRANSITION (ESTRR4.IPTAY)

ICONS FOUR DEPARTURE (RNAV)

ASOS
135.775
CLNC DEL
132.55
UNICOM (CTAF)
122.7
CHARLOTTE DEP CON
120.05 307.8

**TOP ALTITUDE:
3000**



TAKEOFF MINIMUMS
Rwys 5, 23: Standard.

- NOTE: For turbojets only.
- NOTE: DME/DME/IRU or GPS required.
- NOTE: RNAV 1.
- NOTE: RADAR required.
- NOTE: If unable to accept climb rates, advise ATC on initial contact.
- NOTE: Upon reaching 10000 MSL, accelerate to and maintain 280K, if unable advise ATC.
- NOTE: Transponder code will be issued via PDC or Charlotte CLNC DEL.

NOTE: Chart not to scale.



DEPARTURE ROUTE DESCRIPTION

Climb on heading assigned by ATC, expect RADAR vectors to GILFN, then on track 188° to ICONS. Then on NOOKS transition. Maintain 3000, expect filed altitude within 10 minutes after departure.

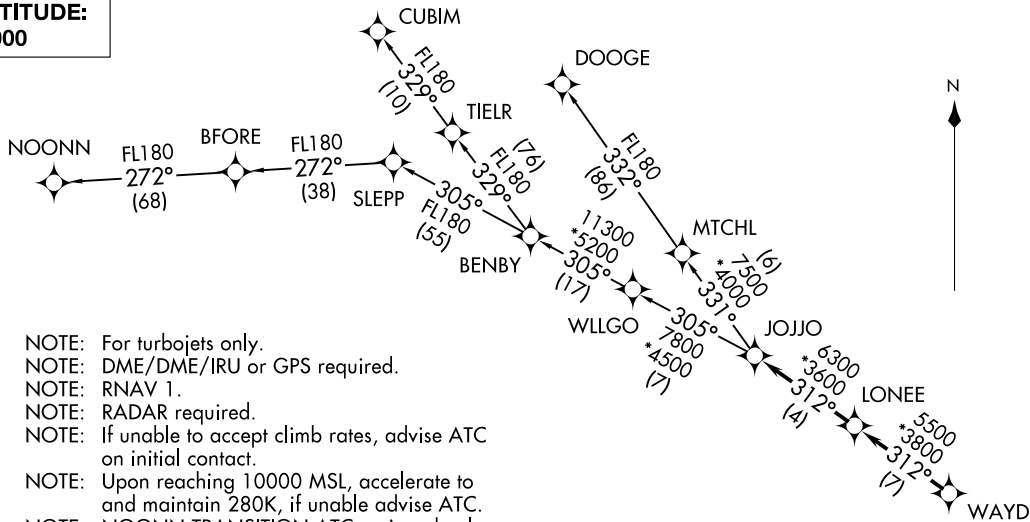
NOOKS TRANSITION (ICONS4.NOOKS)

SE-2, 22 FEB 2024 to 21 MAR 2024

SE-2, 22 FEB 2024 to 21 MAR 2024

**TOP ALTITUDE:
3000**

ASOS
135.775
CLNC DEL
132.55
UNICOM (CTAF)
122.7
CHARLOTTE DEP CON
120.05 307.8



- NOTE: For turbojets only.
- NOTE: DME/DME/IRU or GPS required.
- NOTE: RNAV 1.
- NOTE: RADAR required.
- NOTE: If unable to accept climb rates, advise ATC on initial contact.
- NOTE: Upon reaching 10000 MSL, accelerate to and maintain 280K, if unable advise ATC.
- NOTE: NOONN TRANSITION ATC assigned only.

DEPARTURE ROUTE DESCRIPTION

Climb on heading assigned by ATC, expect RADAR vectors to WAYDS, then on depicted route to JOJJO. Then on assigned transition. Maintain 3000, expect clearance to filed altitude within 10 minutes after departure.

TAKEOFF MINIMUMS
Rwys 5, 23: Standard.

- CUBIM TRANSITION (JOJJO4.CUBIM)
- DOOGE TRANSITION (JOJJO4.DOOGE)
- NOONN TRANSITION (JOJJO4.NOONN)

NOTE: Chart not to scale.

JOJJO FOUR DEPARTURE (RNAV)
(JOJJO4.JOJJO) 03JAN19

MONROE, NORTH CAROLINA
CHARLOTTE/MONROE EXEC (EQY)

(JOJJO4.JOJJO) 22083
JOJJO FOUR DEPARTURE (RNAV)
AL-5726 (FAA)

CHARLOTTE/MONROE EXEC (EQY)
MONROE, NORTH CAROLINA

(KER3.KER) 22307
KERMIT THREE DEPARTURE

AL-5726 (FAA)

CHARLOTTE/MONROE EXEC (EQY)
 MONROE, NORTH CAROLINA

ASOS
 135.775
 CLNC DEL
 132.55
 UNICOM
 122.7
 CHARLOTTE DEP CON
 120.05 307.8

**TOP ALTITUDE:
 3000**

PULASKI
 116.8 PSK
 Chan 115
 N37°05.26'
 W80°42.77'

NALEY
 N36°21.16'
 W80°48.41'

BARRETTS MOUNTAIN
 113.75 BZM
 Chan 84(Y)

RALEIGH/DURHAM
 117.2 RDU
 Chan 119

SUGARLOAF MOUNTAIN
 112.2 SUG
 Chan 59

CHARLOTTE
 115.0 CLT
 Chan 97
 N35°11.42'
 W80°57.11'

JOTTA
 N36°00.88'
 W80°50.96'
 L-25

MERIL
 N35°36.79'
 W79°26.03'
 L-36

SANDHILLS
 111.8 SDZ
 Chan 55

BOBZY
 N35°11.13'
 W81°38.05'

68

NEANO
 N35°04.88'
 W81°59.79'
 L-25

DEBIE
 N34°55.82'
 W81°48.53'

FOOTHILLS
 113.4 ODF
 Chan 81

ANDYS
 N34°22.25'
 W81°08.63'
 L-24-25

WALUT
 N34°40.00'
 W80°50.53'

LILLS
 N34°56.13'
 W79°55.81'
 L-25-35-36

HAMLN
 N34°21.54'
 W80°46.71'
 H-12

CHESTERFIELD
 114.55 CTF
 Chan 92(Y)

TREAL
 N33°04.18'
 W81°26.46'
 H-9-12

- NOTE: For turbojet aircraft only.
 NOTE: RADAR and DME required.
 NOTE: Upon reaching 10000 MSL, accelerate to and maintain 280K, if unable advise ATC.
 NOTE: Transponder code will be issued via Charlotte clearance delivery.

TAKEOFF MINIMUMS
 Rws 5, 23: Standard.

(NARRATIVE ON FOLLOWING PAGE)

NOTE: Chart not to scale.

(KER3.KER) 03JAN19
KERMIT THREE DEPARTURE

MONROE, NORTH CAROLINA
 CHARLOTTE/MONROE EXEC (EQY)

SE-2, 22 FEB 2024 to 21 MAR 2024

SE-2, 22 FEB 2024 to 21 MAR 2024



DEPARTURE ROUTE DESCRIPTION

TAKEOFF RWY 5: Climb heading 053°, thence. . . .

TAKEOFF RWY 23: Climb heading 233°, thence. . . .

. . . .on RADAR vectors to intercept filed/assigned transition or enroute fix/navaid.
Maintain 3000, expect filed altitude/flight level 10 minutes after departure.

- ANDYS TRANSITION (KER3.ANDYS): From over CLT VOR/DME on CLT R-196 to ANDYS.
- DEBIE TRANSITION (KER3.DEBIE): From over CLT VOR/DME on CLT R-255 to DEBIE.
- HAMLN TRANSITION (KER3.HAMLN): From over CLT VOR/DME on CLT R-175 to HAMLN.
- JOTTA TRANSITION (KER3.JOTTA): From over CLT VOR/DME on CLT R-011 to JOTTA.
- LILLS TRANSITION (KER3.LILLS): From over CLT VOR/DME on CLT R-112 to LILLS.
- MERIL TRANSITION (KER3.MERIL): From over CLT VOR/DME on CLT R-076 to MERIL.
- NALEY TRANSITION (KER3.NALEY): From over CLT VOR/DME on CLT R-011 to NALEY.
- NEANO TRANSITION (KER3.NEANO): From over CLT VOR/DME on CLT R-275 to BOBZY and ODF R-070 to NEANO.
- TREAL TRANSITION (KER3.TREAL): From over CLT VOR/DME on CLT R-196 to TREAL.

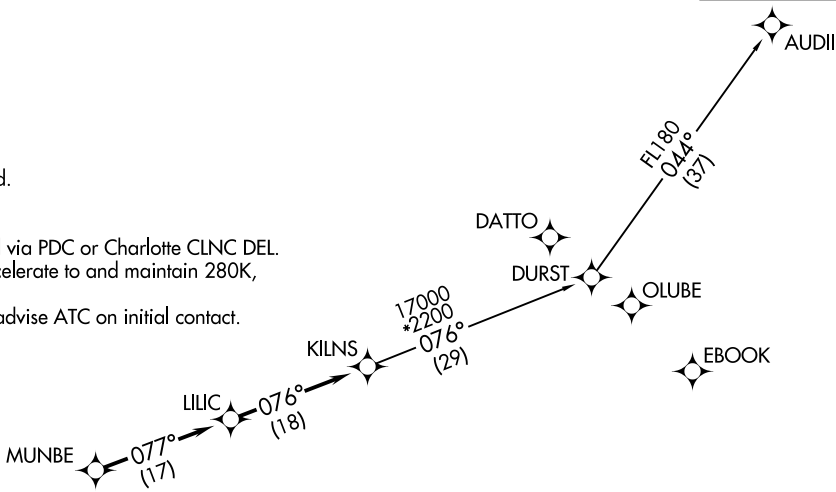
SE-2, 22 FEB 2024 to 21 MAR 2024

SE-2, 22 FEB 2024 to 21 MAR 2024

ASOS
135.775
CLNC DEL
132.55
UNICOM (CTAF)
122.7
CHARLOTTE DEP CON
120.05 307.8

**TOP ALTITUDE:
3000**

- NOTE: For turbojets only.
- NOTE: DME/DME/IRU or GPS required.
- NOTE: RNAV 1.
- NOTE: RADAR required.
- NOTE: Transponder code will be issued via PDC or Charlotte CLNC DEL.
- NOTE: Upon reaching 10000 MSL, accelerate to and maintain 280K, if unable advise ATC.
- NOTE: If unable to accept climb rates, advise ATC on initial contact.



TAKEOFF MINIMUMS
Rwys 5, 23: Standard.

NOTE: Chart not to scale.

DEPARTURE ROUTE DESCRIPTION

Climb on heading assigned by ATC, expect RADAR vectors to MUNBE, then on depicted route to KILNS, then on AUDII transition. Maintain 3000. Expect clearance to filed altitude within 10 minutes after departure.

AUDII TRANSITION (KILNS4.AUDII)

KILNS FOUR DEPARTURE (RNAV)
(KILNS4;KILNS) 03JAN19

CHARLOTTE/MONROE EXEC (EQY)
MONROE, NORTH CAROLINA

KILNS FOUR DEPARTURE (RNAV)
(KILNS4;KILNS) 22083

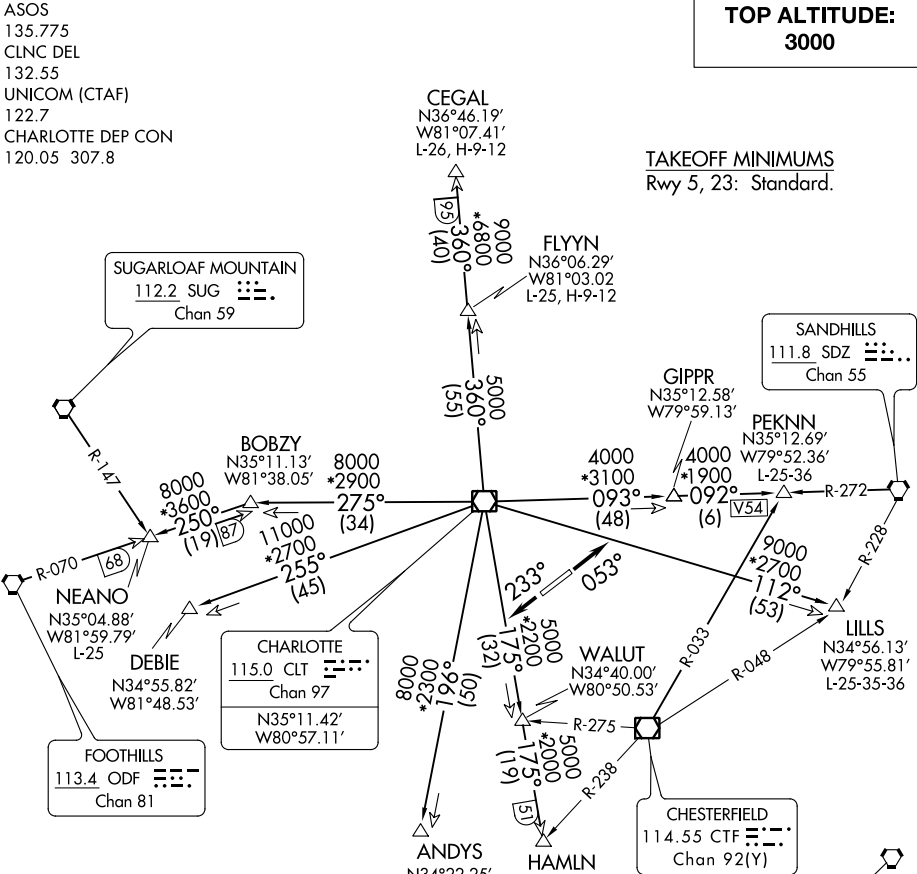
CHARLOTTE/MONROE EXEC (EQY)
MONROE, NORTH CAROLINA

A-5726 (FAA)

KNIGHTS TWO DEPARTURE

**TOP ALTITUDE:
3000**

TAKEOFF MINIMUMS
Rwy 5, 23: Standard.



- NOTE: For propeller aircraft only.
- NOTE: RADAR and DME required.
- NOTE: Turboprops: Operate in a manner that will result in best forward speed and climb rate.
- NOTE: Transponder code will be issued via Charlotte clearance delivery.

- ANDYS TRANSITION: Expect vectors to intercept CLT R-196 to ANDYS.
- CEGAL TRANSITION: Expect vectors to intercept CLT R-360 to CEGAL.
- DEBIE TRANSITION: Expect vectors to intercept CLT R-255 to DEBIE.
- FLYYN TRANSITION: Expect vectors to intercept CLT R-360 to FLYYN.
- HAMLN TRANSITION: Expect vectors to intercept CLT R-175 to HAMLN.
- LILLS TRANSITION: Expect vectors to intercept CLT R-112 to LILLS.
- NEANO TRANSITION: Expect vectors to intercept CLT R-275 to BOBZY then ODF R-070 to NEANO.
- PEKNN TRANSITION: Expect vectors to intercept CLT R-093 to GIPPR then SDZ R-272 to PEKNN.

(NARRATIVE ON FOLLOWING PAGE)

NOTE: Chart not to scale.

SE-2, 22 FEB 2024 to 21 MAR 2024

SE-2, 22 FEB 2024 to 21 MAR 2024

KNIGHTS TWO DEPARTURE

KNIGHTS TWO DEPARTURE



DEPARTURE ROUTE DESCRIPTION

TAKEOFF RUNWAY 5: Climb heading 053°, thence. . . .

TAKEOFF RUNWAY 23: Climb heading 233°, thence. . . .

. . . .expect RADAR vectors to intercept filed/assigned transition or enroute fix/navaid.
Maintain 3000, expect filed altitude/flight level 10 minutes after departure.

ANDYS TRANSITION (KNI2.ANDYS): From over CLT VOR/DME on CLT R-196 to ANDYS.

CEGAL TRANSITION (KNI2.CEGAL): From over CLT VOR/DME on CLT R-360 to CEGAL.

DEBIE TRANSITION (KNI2.DEBIE): From over CLT VOR/DME on CLT R-255 to DEBIE.

FLYYN TRANSITION (KNI2.FLYYN): From over CLT VOR/DME on CLT R-360 to FLYYN.

HAMLN TRANSITION (KNI2.HAMLN): From over CLT VOR/DME on CLT R-175 to HAMLN.

LILLS TRANSITION (KNI2.LILLS): From over CLT VOR/DME on CLT R-112 to LILLS.

NEANO TRANSITION (KNI2.NEANO): From over CLT VOR/DME on CLT R-275 to BOBZY,
then on ODF R-070 to NEANO.

PEKNN TRANSITION (KNI2.PEKNN): From over CLT VOR/DME on CLT R-093 to GIPPR,
then on SDZ R-272 to PEKNN.

SE-2, 22 FEB 2024 to 21 MAR 2024

SE-2, 22 FEB 2024 to 21 MAR 2024

(KRITR5.KRITR) 22083

KRITR FIVE DEPARTURE (RNAV)

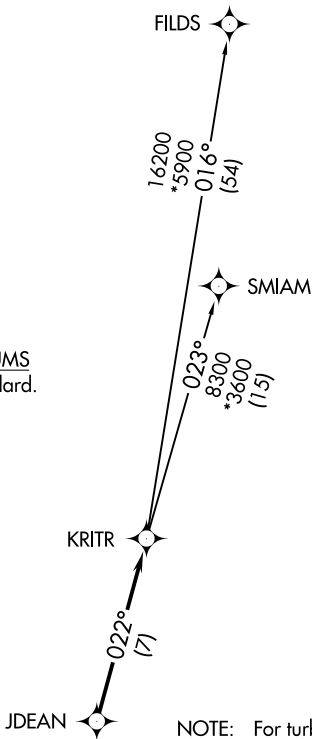
AL-5726 (FAA)

CHARLOTTE/MONROE EXEC (EQY)
MONROE, NORTH CAROLINA

ASOS
135.775
CLNC DEL
132.55
UNICOM (CTAF)
122.7
CHARLOTTE DEP CON
120.05 307.8

**TOP ALTITUDE:
3000**

TAKEOFF MINIMUMS
Rwys 5, 23: Standard.



- NOTE: For turbojets only.
- NOTE: DME/DME/IRU or GPS required.
- NOTE: RNAV 1.
- NOTE: RADAR required.
- NOTE: If unable to accept climb rates, advise ATC on initial contact.
- NOTE: Upon reaching 10000 MSL, accelerate to and maintain 280K, if unable advise ATC.

NOTE: Chart not to scale.



DEPARTURE ROUTE DESCRIPTION

Climb on heading assigned by ATC, expect RADAR vectors to JDEAN, then on track 022° to KRITR, then on assigned transition. Maintain 3000, expect filed altitude within 10 minutes after departure.

FILDS TRANSITION (KRITR5.FILDS)
SMIAM TRANSITION (KRITR5.SMIAM)

KRITR FIVE DEPARTURE (RNAV)

(KRITR5.KRITR) 03JAN19

MONROE, NORTH CAROLINA
CHARLOTTE/MONROE EXEC (EQY)

SE-2, 22 FEB 2024 to 21 MAR 2024

SE-2, 22 FEB 2024 to 21 MAR 2024

(KWEEN4.KWEEN) 22083

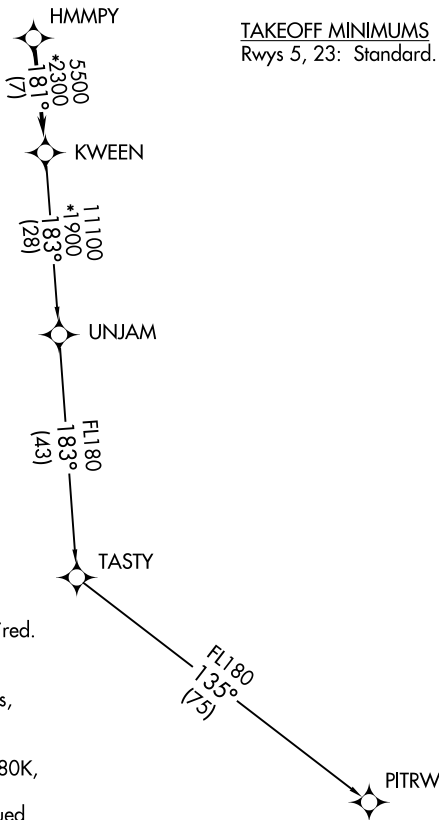
AL-5726 (FAA)

CHARLOTTE/MONROE EXEC (EQY)
MONROE, NORTH CAROLINA

KWEEN FOUR DEPARTURE (RNAV)

ASOS
135.775
CLNC DEL
132.55
UNICOM (CTAF)
122.7
CHARLOTTE DEP CON
120.05 307.8

**TOP ALTITUDE:
3000**



- NOTE: For turbojets only.
- NOTE: DME/DME/IRU or GPS required.
- NOTE: RNAV 1.
- NOTE: RADAR required.
- NOTE: If unable to accept climb rates, advise ATC on initial contact.
- NOTE: Upon reaching 10000 MSL, accelerate to and maintain 280K, if unable advise ATC.
- NOTE: Transponder code will be issued via PDC or Charlotte CLNC DEL.

NOTE: Chart not to scale.

DEPARTURE ROUTE DESCRIPTION

Climb on heading assigned by ATC, expect RADAR vectors to HMMPY, then on track 181° to KWEEN, then on assigned transition, maintain 3000, expect filed altitude within 10 minutes after departure.

PITRW TRANSITION (KWEEN4.PITRW)
UNJAM TRANSITION (KWEEN4.UNJAM)

KWEEN FOUR DEPARTURE (RNAV)
(KWEEN4.KWEEN) 03JAN19

MONROE, NORTH CAROLINA
CHARLOTTE/MONROE EXEC (EQY)

SE-2, 22 FEB 2024 to 21 MAR 2024

SE-2, 22 FEB 2024 to 21 MAR 2024

(LILLS2.LILLS) 22083

AL-5726 (FAA)

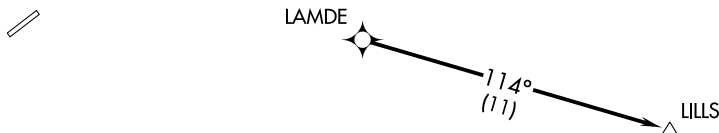
CHARLOTTE/MONROE EXEC (E,Q,Y)
MONROE, NORTH CAROLINA

LILLS TWO DEPARTURE (RNAV)

ASOS
135.775
CLNC DEL
132.55
UNICOM (CTAF)
122.7
CHARLOTTE DEP CON
120.05 307.8

**TOP ALTITUDE:
3000**

TAKEOFF MINIMUMS
Rwys 5, 23: Standard.



- NOTE: For turbojets only.
- NOTE: DME/DME/IRU or GPS required.
- NOTE: RNAV 1.
- NOTE: RADAR required.
- NOTE: Upon reaching 10000 MSL, accelerate to and maintain 280K, if unable advise ATC.
- NOTE: If unable to accept climb rates, advise ATC on initial contact.
- NOTE: Transponder code will be issued via PDC or Charlotte CLNC DEL.

NOTE: Chart not to scale.



DEPARTURE ROUTE DESCRIPTION

Climb on heading assigned by ATC, expect RADAR vectors to LAMDE, then on depicted route to LILLS. Maintain 3000. Expect clearance to filed altitude within 10 minutes after departure.

LILLS TWO DEPARTURE (RNAV)

(LILLS2.LILLS) 03JAN19

MONROE, NORTH CAROLINA
CHARLOTTE/MONROE EXEC (E,Q,Y)

SE-2, 22 FEB 2024 to 21 MAR 2024

SE-2, 22 FEB 2024 to 21 MAR 2024

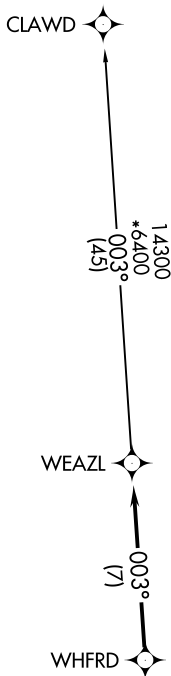
(WEAZL4.WEAZL) 22083

WEAZL FOUR DEPARTURE (RNAV)

AL-5726 (FAA) CHARLOTTE/MONROE EXEC (EQY)
MONROE, NORTH CAROLINA

TOP ALTITUDE:
3000

ASOS 135.775
CLNC DEL 132.55
UNICOM (CTAF) 122.7
CHARLOTTE DEP CON 120.05 307.8



TAKEOFF MINIMUMS
Rwy 5, 23: Standard.

- NOTE: For turbojets only.
- NOTE: DME/DME/IRU or GPS required.
- NOTE: RNAV 1.
- NOTE: RADAR required.
- NOTE: If unable to accept climb rates, advise ATC on initial contact.
- NOTE: Upon reaching 10000 MSL, accelerate to and maintain 280K, if unable advise ATC.

SE-2, 22 FEB 2024 to 21 MAR 2024

SE-2, 22 FEB 2024 to 21 MAR 2024



NOTE: Chart not to scale.

DEPARTURE ROUTE DESCRIPTION

▼
Climb on heading assigned by ATC, expect RADAR vectors to WHFRD, then on track 003° to WEAZL. Then on CLAWD transition. Maintain 3000, expect clearance to filed altitude within 10 minutes after departure.

CLAWD TRANSITION (WEAZL4.CLAWD)

WEAZL FOUR DEPARTURE (RNAV)
(WEAZL4.WEAZL) 03JAN19

MONROE, NORTH CAROLINA
CHARLOTTE/MONROE EXEC (EQY)