

LOC/DME I-EQY 109.75 Chan 34 (Y)	APP CRS 053°	Rwy Idg 7001 TDZE 683 Apt Elev 683
---	------------------------	---

ILS or LOC RWY 5

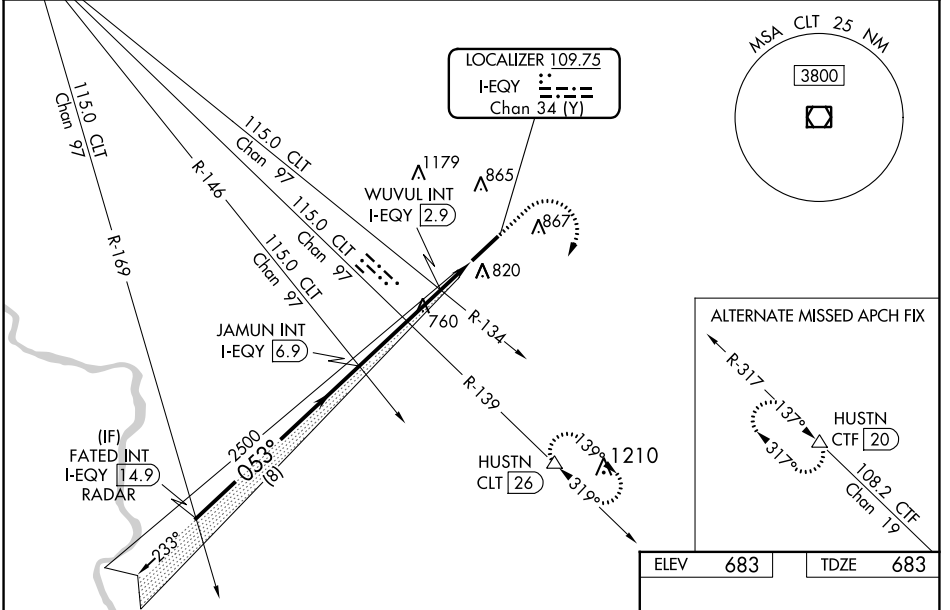
CHARLOTTE-MONROE EXECUTIVE (EQY)

DME required, RADAR required for procedure entry.

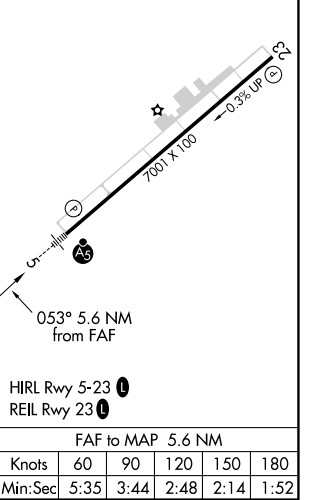
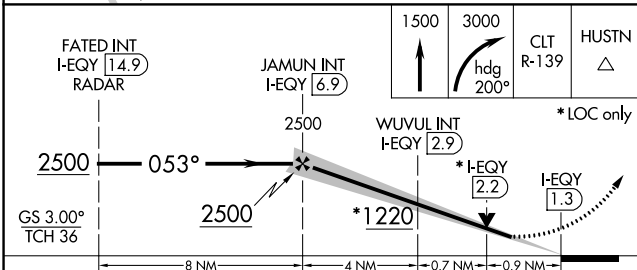
NA VDP NA when using Charlotte altimeter setting. When local altimeter setting not received, use Charlotte altimeter setting and increase DA to 939 feet; increase all MDAs 60 feet, increase S-LOC 5 Cats C and D and Circling Cat C and D visibility ¼ SM. WUVUL fix minimums: increase S-LOC 5 Cats C and D and Circling Cat D visibility ¼ SM. For inop ALS when using Charlotte altimeter setting, increase S-ILS 5 all Cats visibility to ½ SM.

MALS MISSED APPROACH: Climb to 1500 then climbing right turn to 3000 on heading 200° and on CLT VOR/DME R-139 to HUSTN/CLT 26 DME and hold.

ASOS 135.775	CHARLOTTE APP CON 120.05 307.8	CLNC DEL 132.55	UNICOM 122.7 (CTAF)
------------------------	--	---------------------------	-------------------------------



ELEV 683	TDZE 683
----------	----------



CATEGORY	A	B	C	D	
S-ILS 5	883-½ 200 (200-½)				
S-LOC 5	1220-½	537 (600-½)	1220-1	537 (600-1)	
C CIRCLING	1220-1	537 (600-1)	1220-1½ 537 (600-1½)	1480-2½ 797 (800-2½)	
WUVUL FIX MINIMUMS (DUAL VOR RECEIVERS OR DME REQUIRED)					
S-LOC 5	1020-½ 337 (400-½)				
C CIRCLING	1220-1	537 (600-1)	1220-1½ 537 (600-1½)	1480-2½ 797 (800-2½)	
FAF to MAP 5.6 NM					
Knots	60	90	120	150	180
Min:Sec	5:35	3:44	2:48	2:14	1:52

SE-2, 09 SEP 2021 to 07 OCT 2021

SE-2, 09 SEP 2021 to 07 OCT 2021

WAAS CH 90141 W23A	APP CRS 233°	Rwy Idg 7001 TDZE 671 Apt Elev 683
--	------------------------	---

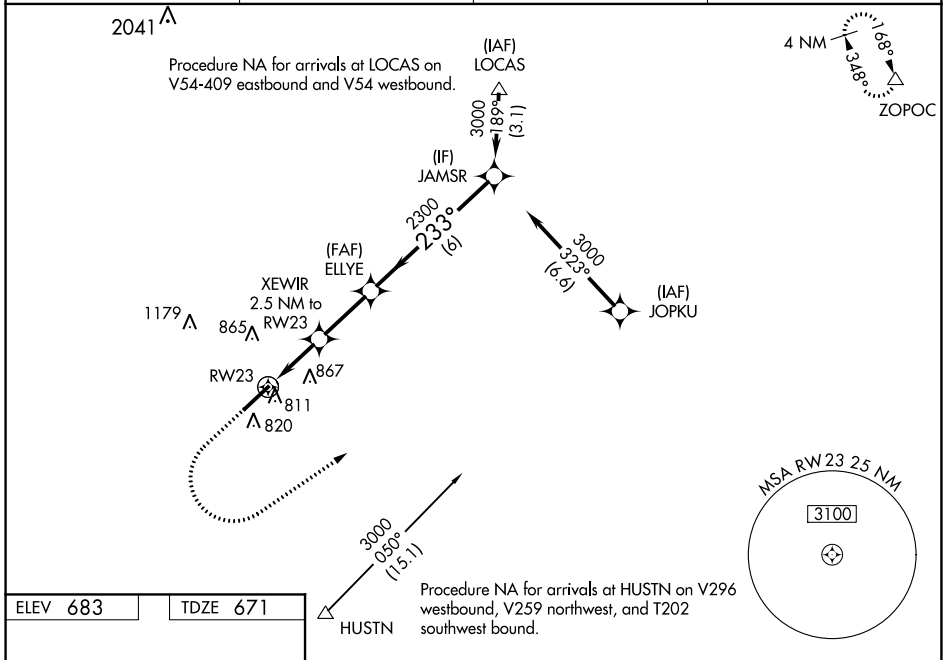
RNAV (GPS) RWY 23

CHARLOTTE-MONROE EXECUTIVE (EQY)

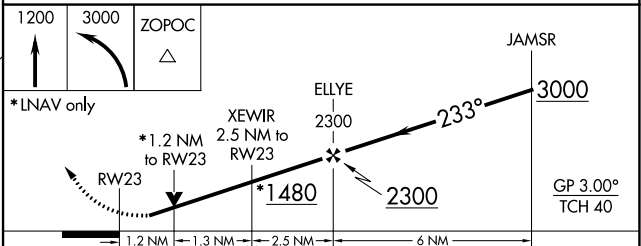
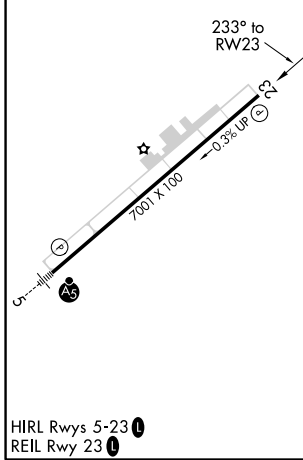
⚠ For uncompensated Baro-VNAV systems, LNAV/VNAV NA below -10°C (14°F) or above 54°C (130°F).
⚠ Baro-VNAV and VDP NA when using Charlotte altimeter setting. DME/DME RNP-0.3 NA.
 Rwy 23 helicopter visibility reduction below 3/4 SM NA. When local altimeter setting not received, use Charlotte altimeter setting: increase LPV DA to 995 feet and visibility all Cats 1/4 SM; increase LNAV/VNAV DA to 1037 feet and visibility all Cats 1/8 SM; increase all MDA 60 feet and LNAV Cats C/D and Circling Cat D visibility 1/4 mile.

MISSED APPROACH:
 Climb to 1200 then climbing left turn to 3000 direct to ZOPC and hold.

ASOS 135.775	CHARLOTTE APP CON 120.05 307.8	CLNC DEL 132.55	UNICOM 122.7 (CTAF) 0
------------------------	--	---------------------------	---------------------------------



ELEV 683	TDZE 671
----------	----------



CATEGORY	A	B	C	D
LPV DA	939-7/8		268 (300-7/8)	
LNAV/VNAV DA	981-1 1/8		310 (300-1 1/8)	
LNAV MDA	1080-1 409 (400-1)		1080-1 1/8 409 (400-1 1/8)	
<input checked="" type="checkbox"/> CIRCLING	1220-1 537 (600-1)		1220-1 1/2 537 (600-1 1/2) 1480-2 1/2 797 (800-2 1/2)	

SE-2, 09 SEP 2021 to 07 OCT 2021

SE-2, 09 SEP 2021 to 07 OCT 2021

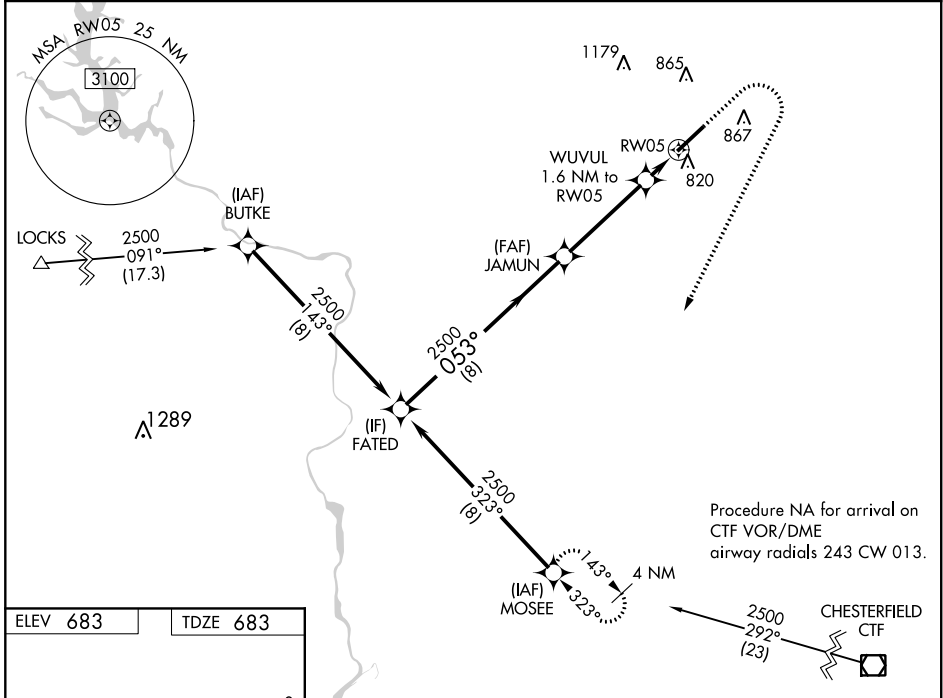
WAAS CH 66002 W05A	APP CRS 053°	Rwy Idg TDZE Apt Elev 7001 683 683
--	------------------------	--

RNAV (GPS) RWY 5

CHARLOTTE-MONROE EXECUTIVE (EQY)

RNP APCH. ▼ For uncompensated Baro-VNAV systems, LNAV/VNAV ▲ NA below -10°C or above 54°C.	MALSR 	MISSED APPROACH: Climb to 1100 then climbing right turn to 2500 direct MOSEE and hold.
--	-----------	--

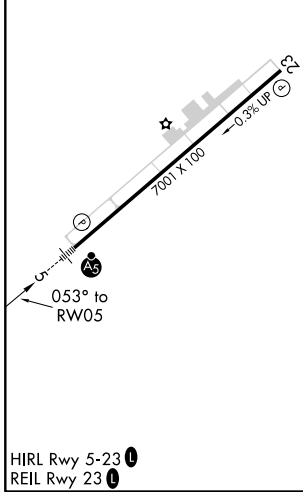
ASOS 135.775	CHARLOTTE APP CON 120.05 307.8	CLNC DEL 132.55	UNICOM 122.7 (CTAF) 0
------------------------	--	---------------------------	---------------------------------



SE-2, 09 SEP 2021 to 07 OCT 2021

SE-2, 09 SEP 2021 to 07 OCT 2021

ELEV 683	TDZE 683
----------	----------



FATED	JAMUN	WUVUL	1100	2500	MOSEEE
2500	2500	1.6 NM to RW05	↑	↷	✦
GP 3.00° TCH 46	2500	*0.9 NM to RW05	*LNAV only.		
8 NM	4 NM	0.7 NM	0.9 NM		
CATEGORY	A	B	C	D	
LPV DA	883-1/2 200 (200-1/2)				
LNAV/VNAV DA	1001-5/8 318 (400-3/8)				
LNAV MDA	1020-1/2 337 (400-1/2)				
<input checked="" type="checkbox"/> CIRCLING	1220-1	537 (600-1)	1220-1 1/2	1480-2 1/2	797 (800-2 1/2)
			537 (600-1 1/2)		