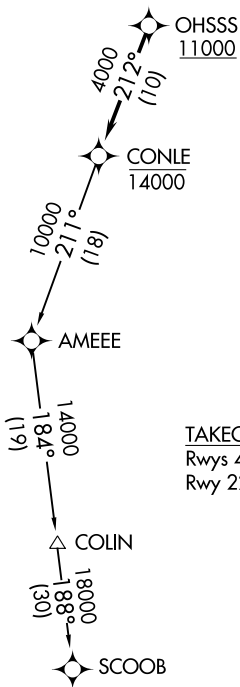


# CONLE FOUR DEPARTURE (RNAV)

**TOP ALTITUDE:  
ASSIGNED BY ATC**

ATIS  
124.475  
CLNC DEL  
119.075  
GND CON  
119.075  
EASTON TOWER ★  
118.525 (CTAF)  
POTOMAC DEP CON  
124.55 317.425

NOTE: RNAV 1.  
NOTE: DME/DME/IRU or GPS required.  
NOTE: RADAR required.  
NOTE: For turbojet aircraft only.



**TAKEOFF MINIMUMS:**  
Rwys 4, 15, 33: Standard.  
Rwy 22: 300-2 or standard with minimum climb  
of 245' per NM to 500.

NOTE: Chart not to scale.



## DEPARTURE ROUTE DESCRIPTION

Climb on assigned heading to ATC assigned altitude, for vectors to cross OHSSS at or above 11000, then on track 212° to cross CONLE at or below 14000, then on assigned transition. Expect filed altitude within 10 minutes after departure.

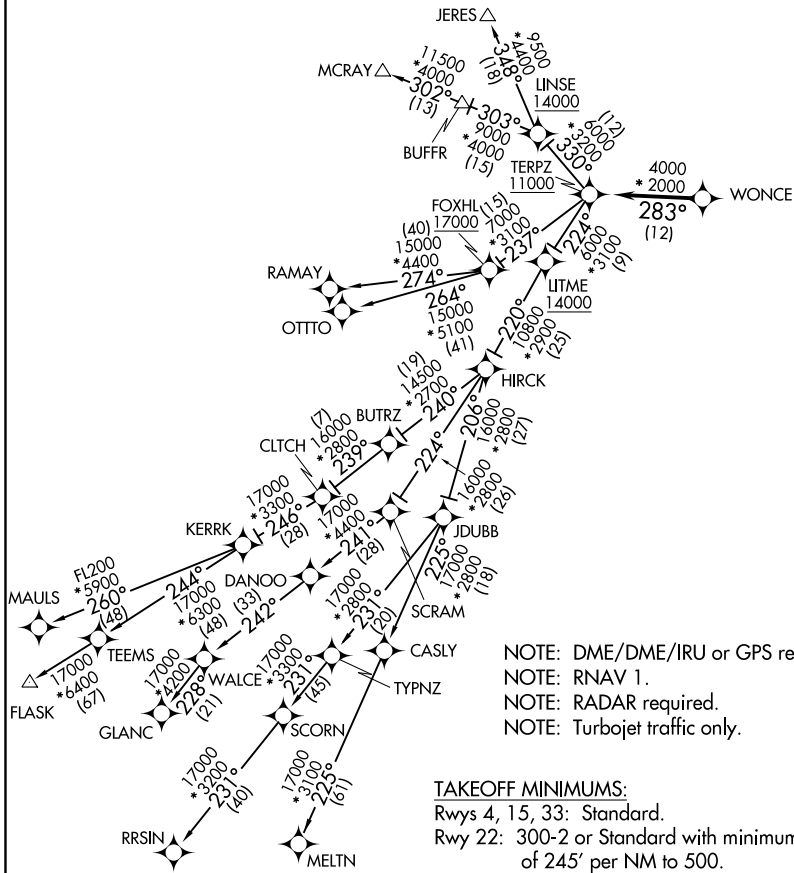
COLIN TRANSITION (CONLE4.COLIN)

SCOOB TRANSITION (CONLE4.SCOOB)

# TERPZ SEVEN DEPARTURE (RNAV)

**TOP ALTITUDE:**  
**RAMAY, OTTTO, MAULS, FLASK,**  
**RRSIN, GLANC, MELTN**  
**TRANSITIONS: 17000**  
**JERES, MCRAJ TRANSITIONS:**  
**16000**

ATIS  
 124.475  
 CLNC DEL  
 119.075  
 GND CON  
 119.075  
 EASTON TOWER ★  
 118.525 (CTAF)  
 POTOMAC DEP CON  
 133.75 254.35



NOTE: DME/DME/IRU or GPS required.  
 NOTE: RNAV 1.  
 NOTE: RADAR required.  
 NOTE: Turbojet traffic only.

**TAKEOFF MINIMUMS:**  
 Rwy 4, 15, 33: Standard.  
 Rwy 22: 300-2 or Standard with minimum climb  
 of 245' per NM to 500.

NOTE: Chart not to scale.

# TERPZ SEVEN DEPARTURE (RNAV)

NE-3, 31 DEC 2020 to 28 JAN 2021

NE-3, 31 DEC 2020 to 28 JAN 2021

# TERPZ SEVEN DEPARTURE (RNAV)



## DEPARTURE ROUTE DESCRIPTION

Fly heading and maintain altitude assigned by ATC, expect RADAR vectors to WONCE, then on track 283° to cross TERPZ at or above 11000, thence. . . .

. . . on assigned transition: Departures on JERES and MCRA Y transitions maintain 16000. Departures on RAMAY, OTTTO, MAULS, FLASK, MELTN, RRSIN, GLANC transitions maintain 17000, expect further clearance to filed altitude within 10 minutes after departure.

FLASK TRANSITION (TERPZ7.FLASK)

GLANC TRANSITION (TERPZ7.GLANC)

JERES TRANSITION (TERPZ7.JERES)

MAULS TRANSITION (TERPZ7.MAULS)

MCRA Y TRANSITION (TERPZ7.MCRA Y)

MELTN TRANSITION (TERPZ7.MELTN)

OTTTO TRANSITION (TERPZ7.OTTTO)

RAMAY TRANSITION (TERPZ7.RAMAY)

RRSIN TRANSITION (TERPZ7.RRSIN)

NE-3, 31 DEC 2020 to 28 JAN 2021

NE-3, 31 DEC 2020 to 28 JAN 2021