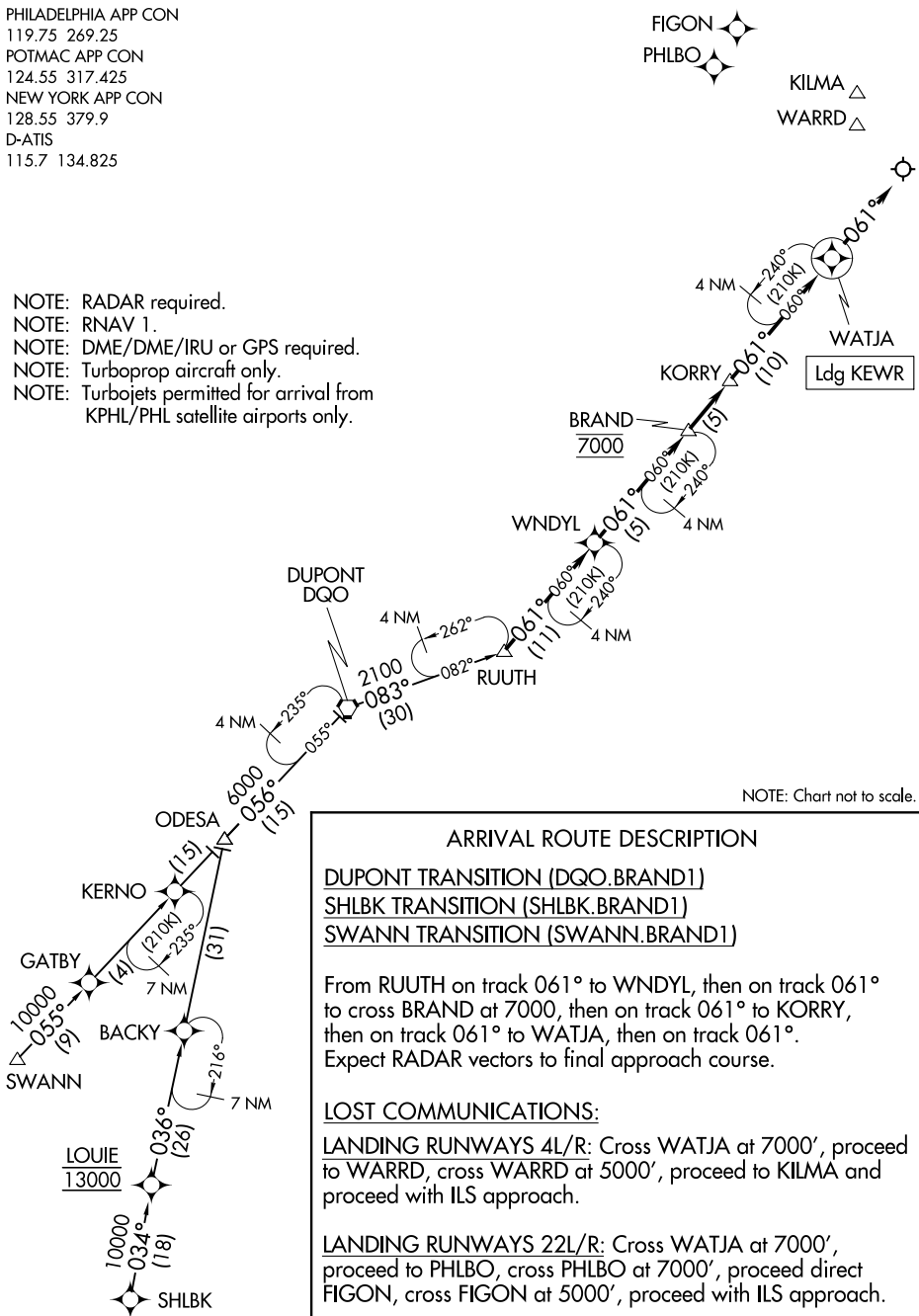


BRAND ONE ARRIVAL (RNAV)

PHILADELPHIA APP CON
 119.75 269.25
 POTMAC APP CON
 124.55 317.425
 NEW YORK APP CON
 128.55 379.9
 D-ATIS
 115.7 134.825

- NOTE: RADAR required.
- NOTE: RNAV 1.
- NOTE: DME/DME/IRU or GPS required.
- NOTE: Turboprop aircraft only.
- NOTE: Turbojets permitted for arrival from KPHL/PHL satellite airports only.



NOTE: Chart not to scale.

ARRIVAL ROUTE DESCRIPTION

- DUPONT TRANSITION (DQO.BRAND1)
- SHLBK TRANSITION (SHLBK.BRAND1)
- SWANN TRANSITION (SWANN.BRAND1)

From RUUTH on track 061° to WNDYL, then on track 061° to cross BRAND at 7000, then on track 061° to KORRY, then on track 061° to WATJA, then on track 061°.
 Expect RADAR vectors to final approach course.

LOST COMMUNICATIONS:

LANDING RUNWAYS 4L/R: Cross WATJA at 7000', proceed to WARRD, cross WARRD at 5000', proceed to KILMA and proceed with ILS approach.

LANDING RUNWAYS 22L/R: Cross WATJA at 7000', proceed to PHLBO, cross PHLBO at 7000', proceed direct FIGON, cross FIGON at 5000', proceed with ILS approach.

BRAND ONE ARRIVAL (RNAV)

NE-2, 22 FEB 2024 to 21 MAR 2024

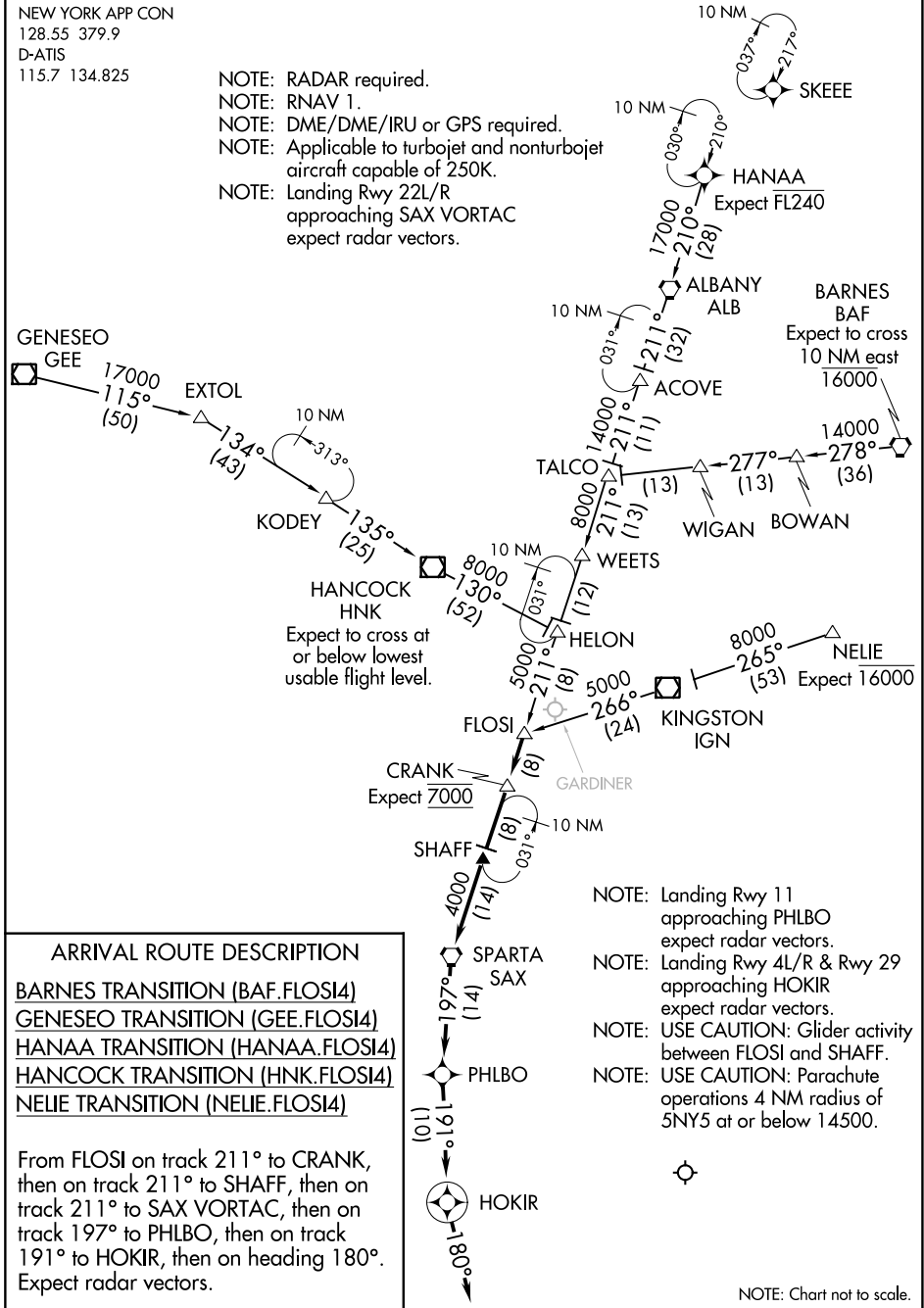
NE-2, 22 FEB 2024 to 21 MAR 2024

FLOSI FOUR ARRIVAL (RNAV)

NEWARK, NEW JERSEY

NEW YORK APP CON
128.55 379.9
D-ATIS
115.7 134.825

- NOTE: RADAR required.
- NOTE: RNAV 1.
- NOTE: DME/DME/IRU or GPS required.
- NOTE: Applicable to turbojet and nonturbojet aircraft capable of 250K.
- NOTE: Landing Rwy 22L/R approaching SAX VORTAC expect radar vectors.



NE-2, 22 FEB 2024 to 21 MAR 2024

NE-2, 22 FEB 2024 to 21 MAR 2024

ARRIVAL ROUTE DESCRIPTION

- BARNES TRANSITION (BAF.FLOSI4)
- GENESEO TRANSITION (GEE.FLOSI4)
- HANAA TRANSITION (HANAA.FLOSI4)
- HANCOCK TRANSITION (HNK.FLOSI4)
- NELIE TRANSITION (NELIE.FLOSI4)

From FLOSI on track 211° to CRANK, then on track 211° to SHAFF, then on track 211° to SAX VORTAC, then on track 197° to PHLBO, then on track 191° to HOKIR, then on heading 180°. Expect radar vectors.

- NOTE: Landing Rwy 11 approaching PHLBO expect radar vectors.
- NOTE: Landing Rwy 4L/R & Rwy 29 approaching HOKIR expect radar vectors.
- NOTE: USE CAUTION: Glider activity between FLOSI and SHAFF.
- NOTE: USE CAUTION: Parachute operations 4 NM radius of 5NY5 at or below 14500.

NOTE: Chart not to scale.

FLOSI FOUR ARRIVAL (RNAV)

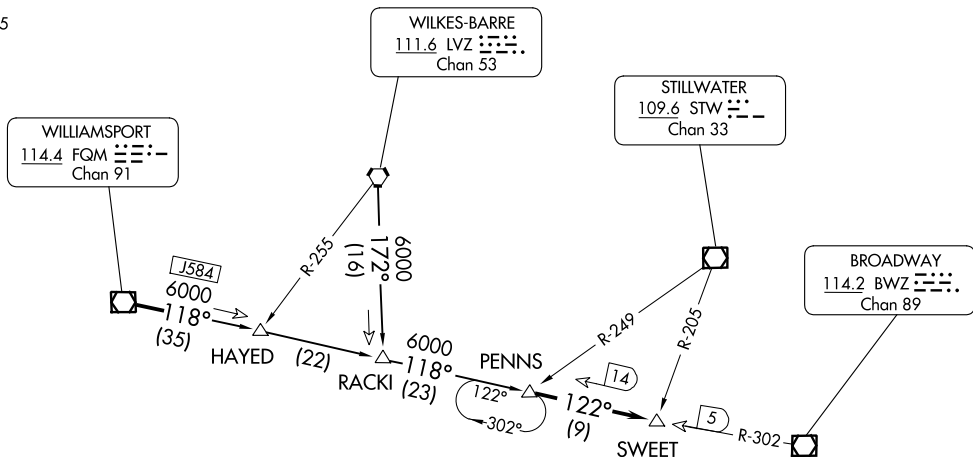
PENNS TWO ARRIVAL
(PENNS, PENNS2) 05AUG04

(PENNS, PENNS2) 23334
PENNS TWO ARRIVAL

AL-285 (FAA)

NEWARK LIBERTY INTL (E/W/R)
NEWARK, NEW JERSEY

NEW YORK APP CON
127.6 379.9
D-ATIS
115.7 134.825



ARRIVAL ROUTE DESCRIPTION

WILKES-BARRE TRANSITION (LVZ.PENNS2): From over LVZ VORTAC via R-172 to RACKI INT, then via FQM R-118 to PENNS INT. Thence

WILLIAMSPORT TRANSITION (FQM.PENNS2): From over FQM VOR/DME via FQM R-118 to PENNS INT. Thence

. . . . From over PENNS INT via BWZ VOR/DME R-302 to SWEET INT. Expect radar vectors to final approach course.

NOTE: This STAR is applicable to non-jet aircraft filed less than 250K landing Newark Liberty Intl airport.

NOTE: Chart not to scale.

NEWARK, NEW JERSEY
NEWARK LIBERTY INTL (E/W/R)

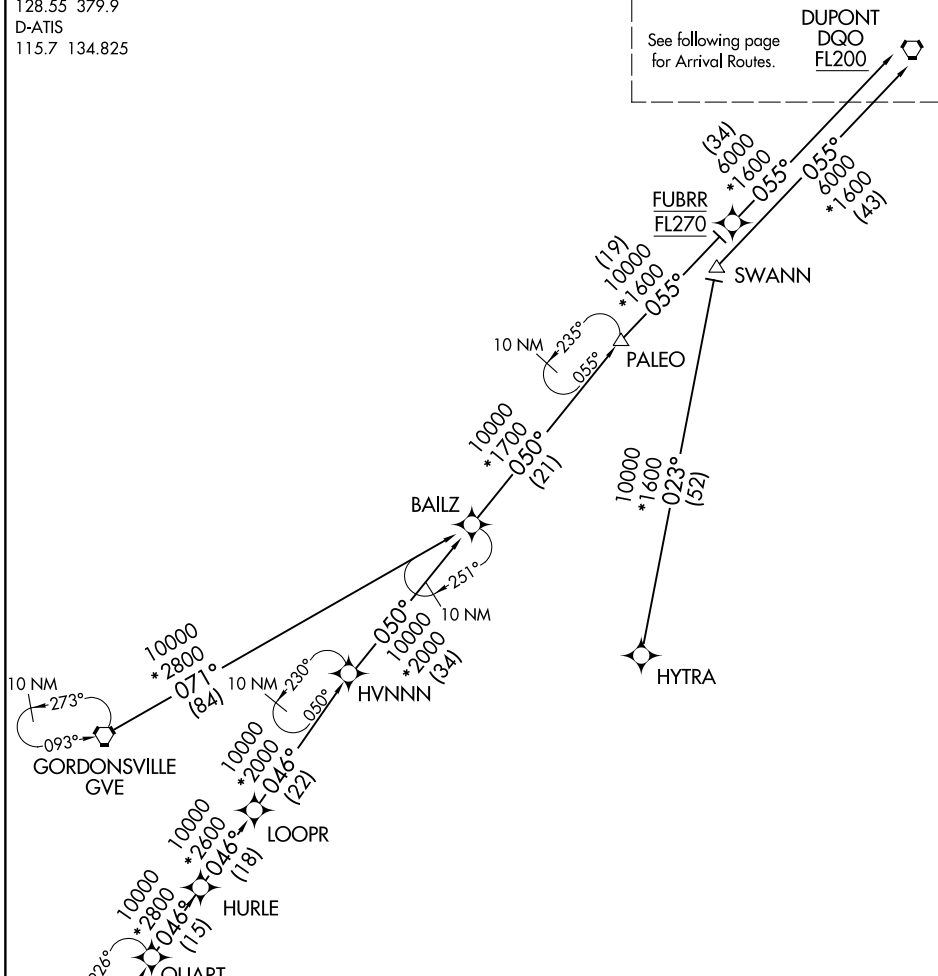
PHLBO FOUR ARRIVAL (RNAV) Transition Routes

WASHINGTON CENTER
135.52 307.25
NEW YORK APP CON
128.55 379.9
D-ATIS
115.7 134.825

RNAV 1 - DME/DME/IRU or GPS.

RADAR required.

See following page for Arrival Routes.
DUPONT
DQO
FL200



NOTE: Jet aircraft only.
NOTE: HYTRA Transition do not file - to be assigned by ATC.
NOTE: Landing Rwy 4L/R & 29, approaching METRO expect RADAR vectors.
NOTE: Landing Rwy 11 & 22L/R, approaching PHLBO expect RADAR vectors.

NOTE: Chart not to scale.

GORDONSVILLE TRANSITION (GVE.PHLBO4)
HYTRA TRANSITION (HYTRA.PHLBO4)
QUART TRANSITION (QUART.PHLBO4)
SWANN TRANSITION (SWANN.PHLBO4)

(CONTINUED ON FOLLOWING PAGE)

NE-2, 22 FEB 2024 to 21 MAR 2024

NE-2, 22 FEB 2024 to 21 MAR 2024

PHLBO FOUR ARRIVAL (RNAV) Transition Routes

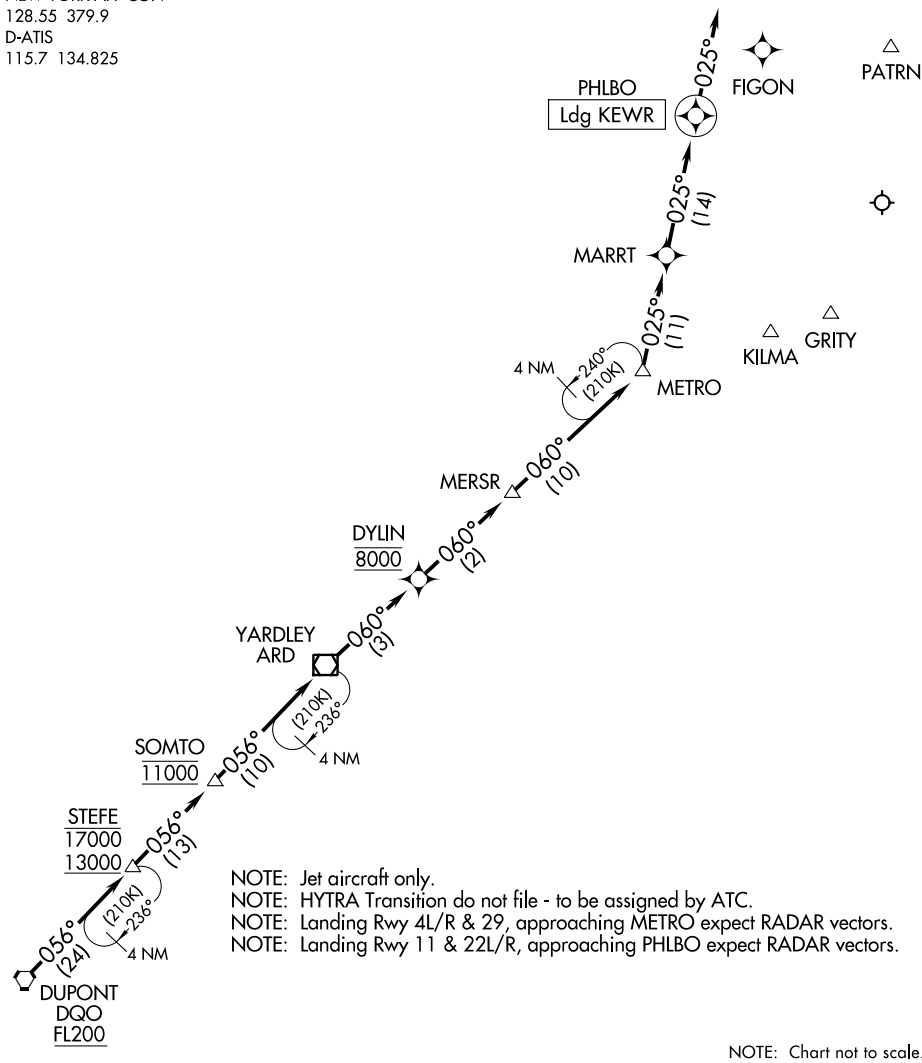
PHLBO FOUR ARRIVAL (RNAV) Arrival Routes

NEWARK LIBERTY INTL (EWR)
NEWARK, NEW JERSEY

WASHINGTON CENTER
132.52 307.25
NEW YORK APP CON
128.55 379.9
D-ATIS
115.7 134.825

RNAV 1 - DME/DME/IRU or GPS.

RADAR required.



ARRIVAL ROUTE DESCRIPTION

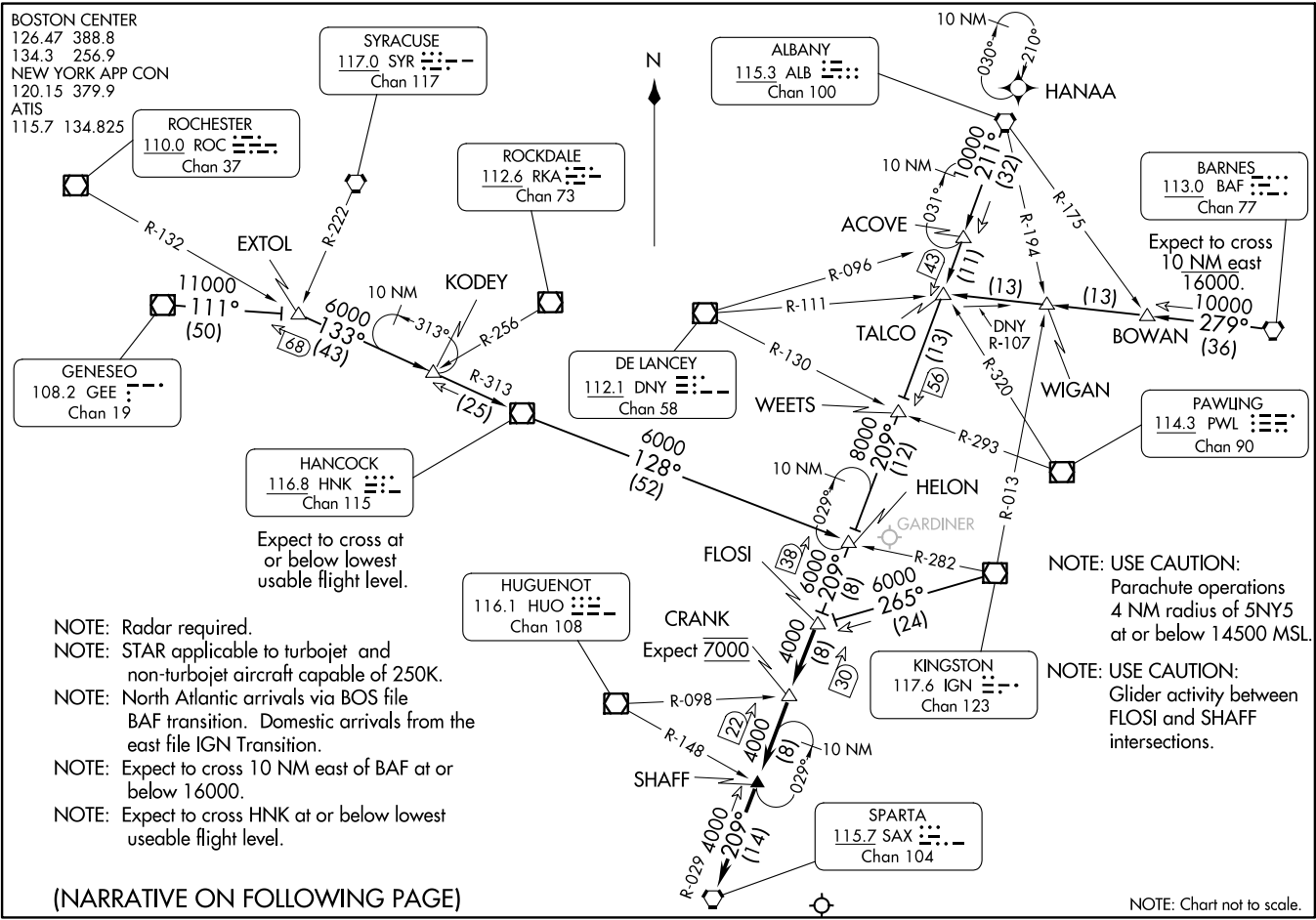
From DQO VORTAC on track 056° to cross STEFE between 13000 and 17000, then on track 056° to cross SOMTO at 11000, then on track 056° to ARD VOR/DME, then on track 060° to cross DYLIN at 8000, then on track 060° to MERSR, then on track 060° to METRO, then on track 025° to MARRT, then on track 025° to PHLBO, then on track 025°. Expect RADAR vectors to final approach course.

PHLBO FOUR ARRIVAL (RNAV) Arrival Routes

NE-2, 22 FEB 2024 to 21 MAR 2024

NE-2, 22 FEB 2024 to 21 MAR 2024

SHAFF SEVEN ARRIVAL
(SHAFF:SHAFF7) 31MAY12



BOSTON CENTER
126.47 388.8
134.3 256.9
NEW YORK APP CON
120.15 379.9
ATIS
115.7 134.825

ROCHESTER
110.0 ROC
Chan 37

SYRACUSE
117.0 SYR
Chan 117

ROCKDALE
112.6 RKA
Chan 73

ALBANY
115.3 ALB
Chan 100

BARNES
113.0 BAF
Chan 77

GENESE0
108.2 GEE
Chan 19

HANCOCK
116.8 HNK
Chan 115

Expect to cross at
or below lowest
usable flight level.

HUGUENOT
116.1 HUU
Chan 108

KINGSTON
117.6 IGN
Chan 123

PAWLING
114.3 PWL
Chan 90

SPARTA
115.7 SAX
Chan 104

- NOTE: Radar required.
- NOTE: STAR applicable to turbojet and non-turbojet aircraft capable of 250K.
- NOTE: North Atlantic arrivals via BOS file BAF transition. Domestic arrivals from the east file IGN Transition.
- NOTE: Expect to cross 10 NM east of BAF at or below 16000.
- NOTE: Expect to cross HNK at or below lowest useable flight level.

- NOTE: USE CAUTION:
Parachute operations
4 NM radius of 5NY5
at or below 14500 MSL.
- NOTE: USE CAUTION:
Glider activity between
FLOSI and SHAFF
intersections.

(NARRATIVE ON FOLLOWING PAGE)

NOTE: Chart not to scale.

(SHAFF:SHAFF7) 23334
SHAFF SEVEN ARRIVAL

AL-285 (FAA)

NEWARK LIBERTY INTL (E:WTR)
NEWARK, NEW JERSEY

NEWARK, NEW JERSEY
NEWARK LIBERTY INTL (E:WTR)

ARRIVAL ROUTE DESCRIPTION

ALBANY TRANSITION (ALB.SHAFF7): From over ALB VORTAC on ALB R-211 to WEETS INT, then on SAX R-029 to FLOSI INT. Thence. . . .

BARNES TRANSITION (BAF.SHAFF7): From over BAF VORTAC on BAF R-279 to TALCO INT, then on ALB R-211 to WEETS INT, then on SAX R-029 to FLOSI INT. Thence. . . .

GENESEO TRANSITION (GEE.SHAFF7): From over GEE VOR/DME on GEE R-111 to EXTOL INT, then on HNK R-313 to HNK VOR/DME, then on HNK R-128 to HELON INT, then on SAX R-029 to FLOSI INT. Thence. . . .

HANCOCK TRANSITION (HNK.SHAFF7): From over HNK VOR/DME on HNK R-128 to HELON INT, then on SAX R-029 to FLOSI INT. Thence. . . .

KINGSTON TRANSITION (IGN.SHAFF7): From over IGN VOR/DME on IGN R-265 to FLOSI INT. Thence. . . .

. . . . From over FLOSI INT on SAX R-029 to CRANK INT, then to SHAFF INT, then to SAX VORTAC. Expect radar vectors to final approach course.

NE-2, 22 FEB 2024 to 21 MAR 2024

NE-2, 22 FEB 2024 to 21 MAR 2024

NEW YORK APP CON
127.6 379.9
D-ATIS
115.7 134.825



NOTE: This STAR is for aircraft capable of 250K or greater.

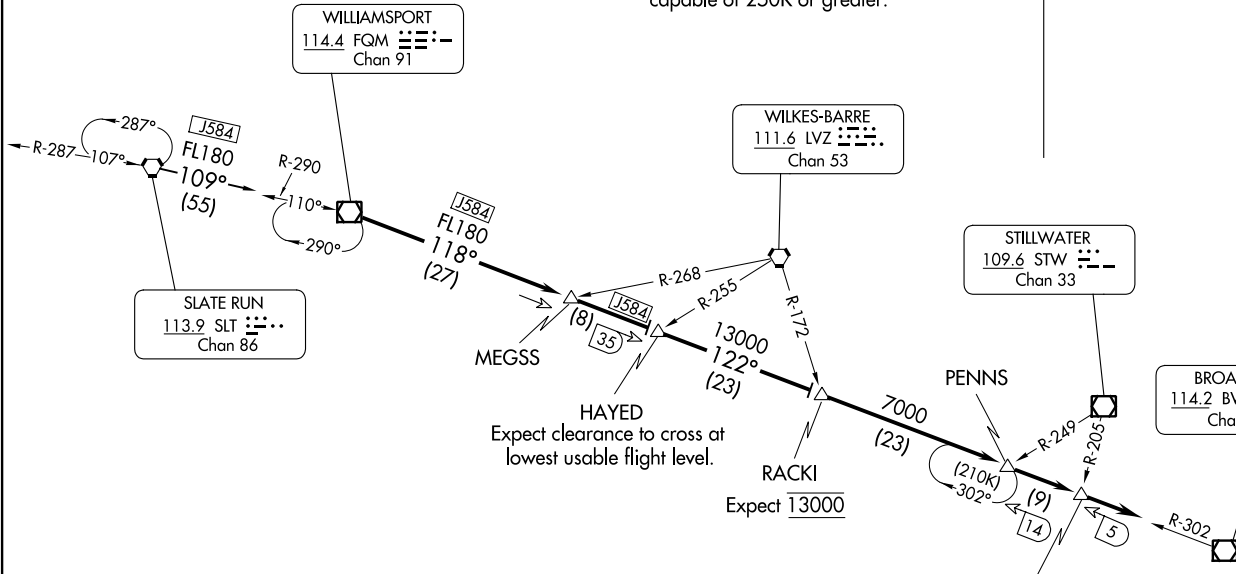
WILLIAMSPORT
114.4 FQM Chan 91

WILKES-BARRE
111.6 LVZ Chan 53

STILLWATER
109.6 STW Chan 33

BROADWAY
114.2 BWZ Chan 89

SLATE RUN
113.9 SLT Chan 86



ARRIVAL ROUTE DESCRIPTION

SLATE RUN TRANSITION (SLT.FQM3): From over SLT VORTAC on SLT R-109 to FQM VOR/DME.

From FQM VOR/DME on FQM R-118 to HAYED INT. Then on BWZ R-302 to RACKI INT. Then on BWZ R-302 to SWEET INT. Depart SWEET heading 122°. Expect vectors to final approach course.

A higher crossing altitude may be required between the hours of 2300 to 0700 local.

NOTE: Chart not to scale.

WILLIAMSPORT THREE ARRIVAL
(FQM.FQM3) 31MAY12

(FQM.FQM3) 2334
WILLIAMSPORT THREE ARRIVAL

AL-285 (FAA)

NEWARK, NEW JERSEY
NEWARK LIBERTY INTL (EWR)

NEWARK LIBERTY INTL (EWR)
NEWARK, NEW JERSEY