

(MTY5.MTY) 22363

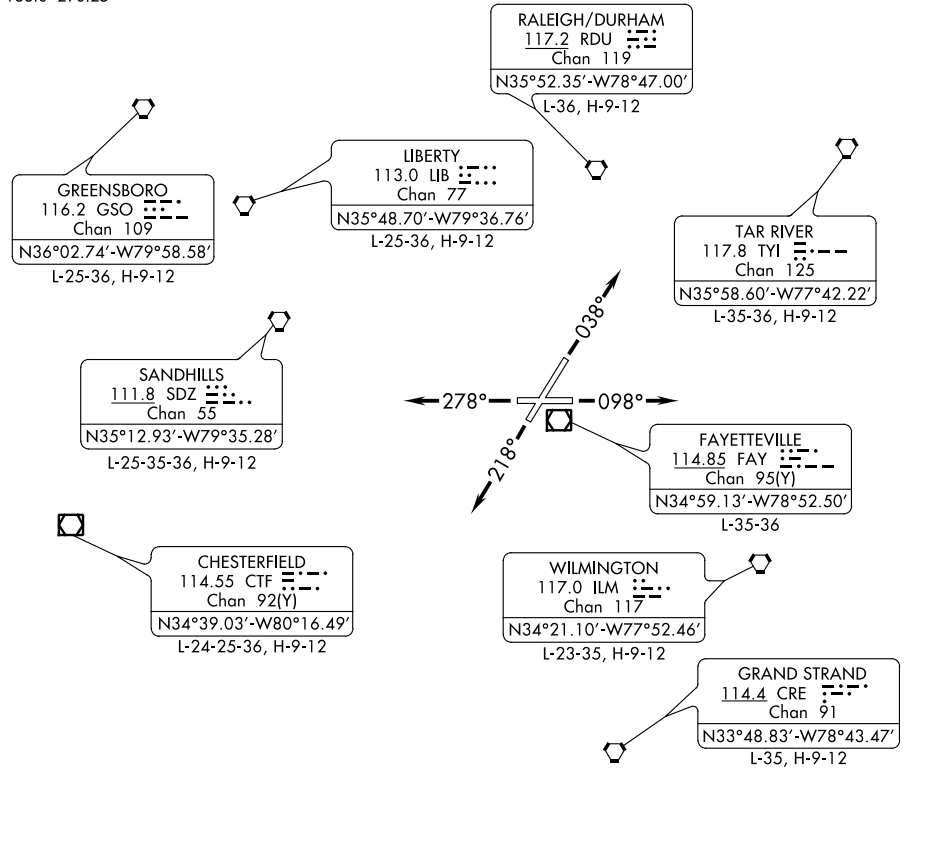
MOUNTY FIVE DEPARTURE

FAYETTEVILLE RGNL/GRANNIS FLD (FAY)
AL-690 (FAA) FAYETTEVILLE, NORTH CAROLINA

ATIS
121.25
GND CON
121.7 348.6
FAYETTEVILLE TOWER
118.3 269.2
FAYETTEVILLE DEP CON
133.0 290.25

RADAR required.

**TOP ALTITUDE:
2000**



SE-2, 22 FEB 2024 to 21 MAR 2024

SE-2, 22 FEB 2024 to 21 MAR 2024

TAKEOFF MINIMUMS:

Rwys 4, 10, 22, 28: Standard.

NOTE: Chart not to scale.



DEPARTURE ROUTE DESCRIPTION

TAKEOFF RUNWAY 4: Climb heading 038° or as assigned, thence. . .

TAKEOFF RUNWAY 10: Climb heading 098° or as assigned, thence. . .

TAKEOFF RUNWAY 22: Climb heading 218° or as assigned, thence. . .

TAKEOFF RUNWAY 28: Climb heading 278° or as assigned, thence. . .

. . . maintain 2000 or assigned altitude. Expect vectors to join filed route.
Expect further clearance to filed altitude 10 minutes after departure.

MOUNTY FIVE DEPARTURE

(MTY5.MTY) 19MAY22

FAYETTEVILLE, NORTH CAROLINA
FAYETTEVILLE RGNL/GRANNIS FLD (FAY)